



Jey Grey Townhouse 19  
Villa area 73m<sup>2</sup>  
Land area 104m<sup>2</sup>

Jey Grey Townhouse 18  
Villa area 73m<sup>2</sup>  
Land area 104m<sup>2</sup>

Jey Grey Townhouse 17  
Villa area 73m<sup>2</sup>  
Land area 104m<sup>2</sup>

Jey Grey Townhouse 16  
Villa area 73m<sup>2</sup>  
Land area 104m<sup>2</sup>

Jey Grey Townhouse 15  
Villa area 73m<sup>2</sup>  
Land area 104m<sup>2</sup>

Jey Grey Townhouse 14  
Villa area 73m<sup>2</sup>  
Land area 104m<sup>2</sup>

Jey Grey Townhouse 13  
Villa area 73m<sup>2</sup>  
Land area 104m<sup>2</sup>

Jey Grey Townhouse 12  
Villa area 73m<sup>2</sup>  
Land area 104m<sup>2</sup>

Jey Grey Townhouse 11  
Villa area 73m<sup>2</sup>  
Land area 104m<sup>2</sup>

Jey Grey Townhouse 10  
Villa area 73m<sup>2</sup>  
Land area 104m<sup>2</sup>

Jey Grey Cabanas Big 3  
Villa area 41.7m<sup>2</sup>  
Land area 154m<sup>2</sup>

Jey Grey Cabanas 7  
Villa area 41.7m<sup>2</sup>  
Land area 129m<sup>2</sup>

Jey Grey Cabanas 6  
Villa area 41.7m<sup>2</sup>  
Land area 129m<sup>2</sup>

Jey Grey Cabanas 5  
Villa area 41.7m<sup>2</sup>  
Land area 129m<sup>2</sup>

Jey Grey Cabanas 4  
Villa area 41.7m<sup>2</sup>  
Land area 129m<sup>2</sup>

Jey Grey Cabanas 3  
Villa area 41.7m<sup>2</sup>  
Land area 129m<sup>2</sup>

Jey Grey Cabanas 2  
Villa area 41.7m<sup>2</sup>  
Land area 129m<sup>2</sup>

Jey Grey Cabanas 1  
Villa area 41.7m<sup>2</sup>  
Land area 129m<sup>2</sup>

Neat house 8  
Villa area 62.4m<sup>2</sup>  
Land area 138.8m<sup>2</sup>

Neat house 7  
Villa area 62.4m<sup>2</sup>  
Land area 138m<sup>2</sup>

Neat house 6  
Villa area 62.4m<sup>2</sup>  
Land area 139m<sup>2</sup>

Neat house 5  
Villa area 62.4m<sup>2</sup>  
Land area 139.4m<sup>2</sup>

Neat house 9  
Villa area 62.4m<sup>2</sup>  
Land area 139.2m<sup>2</sup>

Neat house 4  
Villa area 62.4m<sup>2</sup>  
Land area 139.8m<sup>2</sup>

Neat house 1  
Villa area 62.4m<sup>2</sup>  
Land area 138.3m<sup>2</sup>

Neat house 10  
Villa area 62.4m<sup>2</sup>  
Land area 141m<sup>2</sup>

Neat house 2  
Villa area 62.4m<sup>2</sup>  
Land area 140m<sup>2</sup>

Neat house 3  
Villa area 62.4m<sup>2</sup>  
Land area 140m<sup>2</sup>

Jey Grey Cabanas Big 1  
Villa area 41.7m<sup>2</sup>  
Land area 241m<sup>2</sup>

Jey Grey Cabanas Big 2  
Villa area 41.7m<sup>2</sup>  
Land area 241m<sup>2</sup>

**NOTE:**

— Fence (100 mm)      Land area: 5455 m<sup>2</sup>

— Wall (150 mm)

— Roof border

Complex Neat House & Jey Grey, Bali	Date	Page	Sheets
		01	02
Land plan	DM PROJECTS		

- Jey Grey Townhouse 19  
Villa area 73m<sup>2</sup>  
Land area 104m<sup>2</sup>
- Jey Grey Townhouse 18  
Villa area 73m<sup>2</sup>  
Land area 104m<sup>2</sup>
- Jey Grey Townhouse 17  
Villa area 73m<sup>2</sup>  
Land area 104m<sup>2</sup>
- Jey Grey Townhouse 16  
Villa area 73m<sup>2</sup>  
Land area 104m<sup>2</sup>
- Jey Grey Townhouse 15  
Villa area 73m<sup>2</sup>  
Land area 104m<sup>2</sup>
  
- Jey Grey Townhouse 14  
Villa area 73m<sup>2</sup>  
Land area 104m<sup>2</sup>
- Jey Grey Townhouse 13  
Villa area 73m<sup>2</sup>  
Land area 104m<sup>2</sup>
- Jey Grey Townhouse 12  
Villa area 73m<sup>2</sup>  
Land area 104m<sup>2</sup>
- Jey Grey Townhouse 11  
Villa area 73m<sup>2</sup>  
Land area 104m<sup>2</sup>
- Jey Grey Townhouse 10  
Villa area 73m<sup>2</sup>  
Land area 104m<sup>2</sup>

- Jey Grey Cabanas Big 3  
Villa area 41.7m<sup>2</sup>  
Land area 154m<sup>2</sup>

- Jey Grey Cabanas 7  
Villa area 41.7m<sup>2</sup>  
Land area 129m<sup>2</sup>
- Jey Grey Cabanas 6  
Villa area 41.7m<sup>2</sup>  
Land area 129m<sup>2</sup>
- Jey Grey Cabanas 5  
Villa area 41.7m<sup>2</sup>  
Land area 129m<sup>2</sup>
- Jey Grey Cabanas 4  
Villa area 41.7m<sup>2</sup>  
Land area 129m<sup>2</sup>
- Jey Grey Cabanas 3  
Villa area 41.7m<sup>2</sup>  
Land area 129m<sup>2</sup>
- Jey Grey Cabanas 2  
Villa area 41.7m<sup>2</sup>  
Land area 129m<sup>2</sup>
- Jey Grey Cabanas 1  
Villa area 41.7m<sup>2</sup>  
Land area 129m<sup>2</sup>

- Neat house 8  
Villa area 62.4m<sup>2</sup>  
Land area 138.8m<sup>2</sup>
- Neat house 7  
Villa area 62.4m<sup>2</sup>  
Land area 138m<sup>2</sup>
- Neat house 6  
Villa area 62.4m<sup>2</sup>  
Land area 139m<sup>2</sup>
- Neat house 5  
Villa area 62.4m<sup>2</sup>  
Land area 139.4m<sup>2</sup>
- Neat house 9  
Villa area 62.4m<sup>2</sup>  
Land area 139.2m<sup>2</sup>
- Neat house 4  
Villa area 62.4m<sup>2</sup>  
Land area 139.8m<sup>2</sup>
- Neat house 1  
Villa area 62.4m<sup>2</sup>  
Land area 138.3m<sup>2</sup>
- Neat house 10  
Villa area 62.4m<sup>2</sup>  
Land area 141m<sup>2</sup>
- Neat house 2  
Villa area 62.4m<sup>2</sup>  
Land area 140m<sup>2</sup>
- Neat house 3  
Villa area 62.4m<sup>2</sup>  
Land area 140m<sup>2</sup>

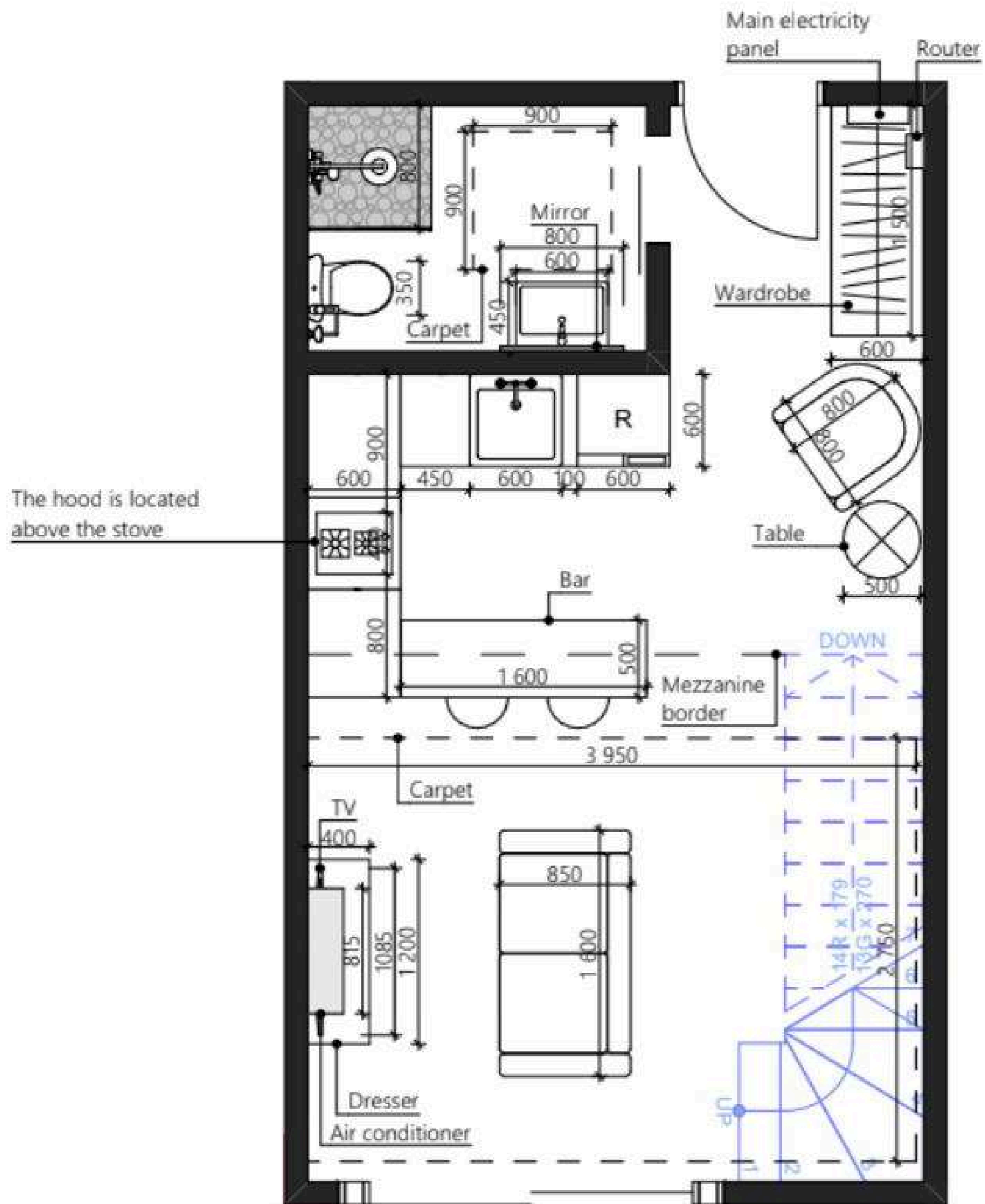
NOTE:

- Fence (100 mm) Land area: 5455 m<sup>2</sup>
- Wall (150 mm)
- Roof border

Complex Neat House & Jey Grey, Bali	Date	Page	Sheets
		02	02
Land plan with dimensions		DM PROJECTS	

# Complex Neat house & Jey Grey





# PLAN 1 FLOOR

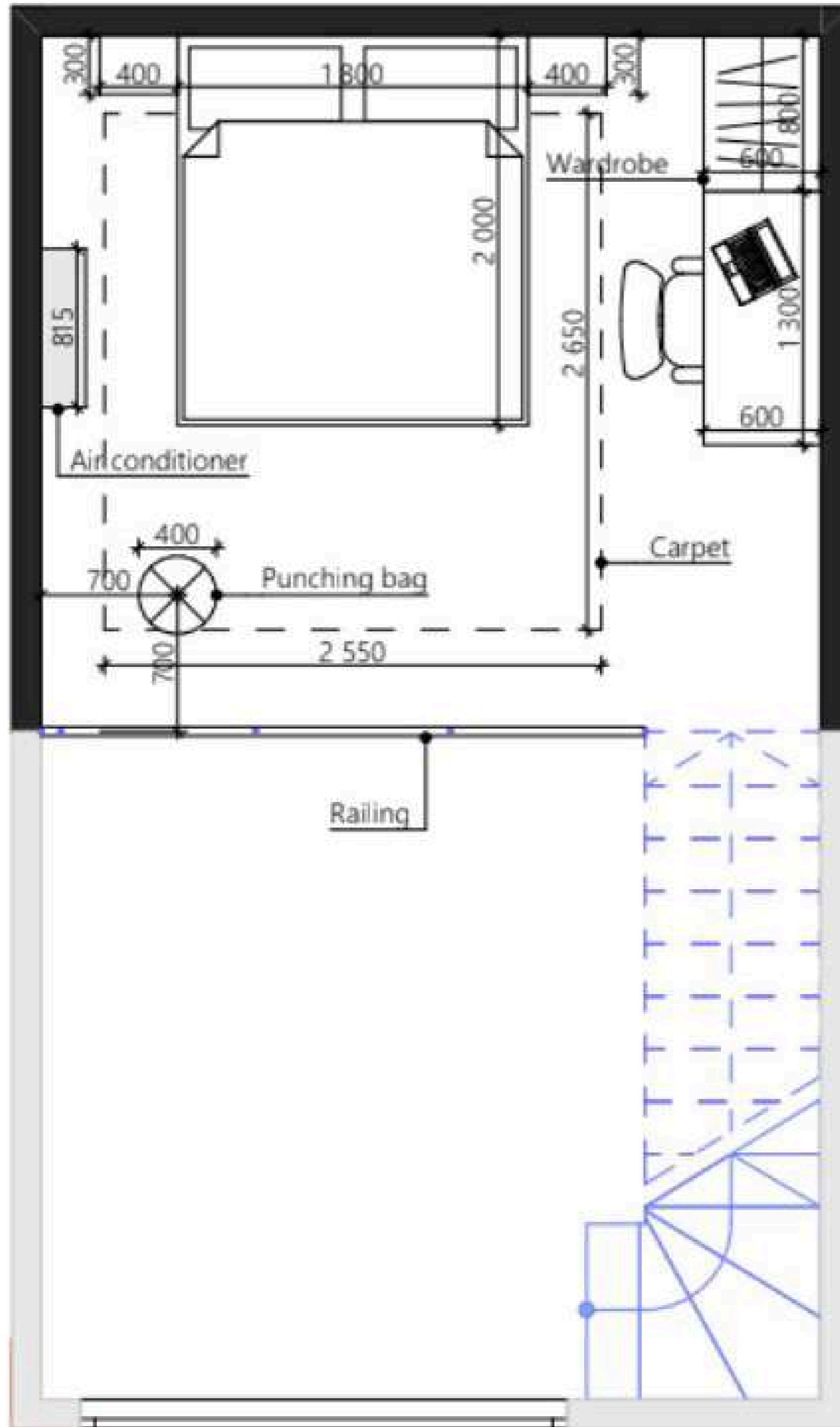
NOTE:

█ - wall (150 mm)

Total height: 4600 mm

Height of 1st floor: 2500 mm

Height of 2nd floor: 2100 mm



# PLAN 2 FLOOR

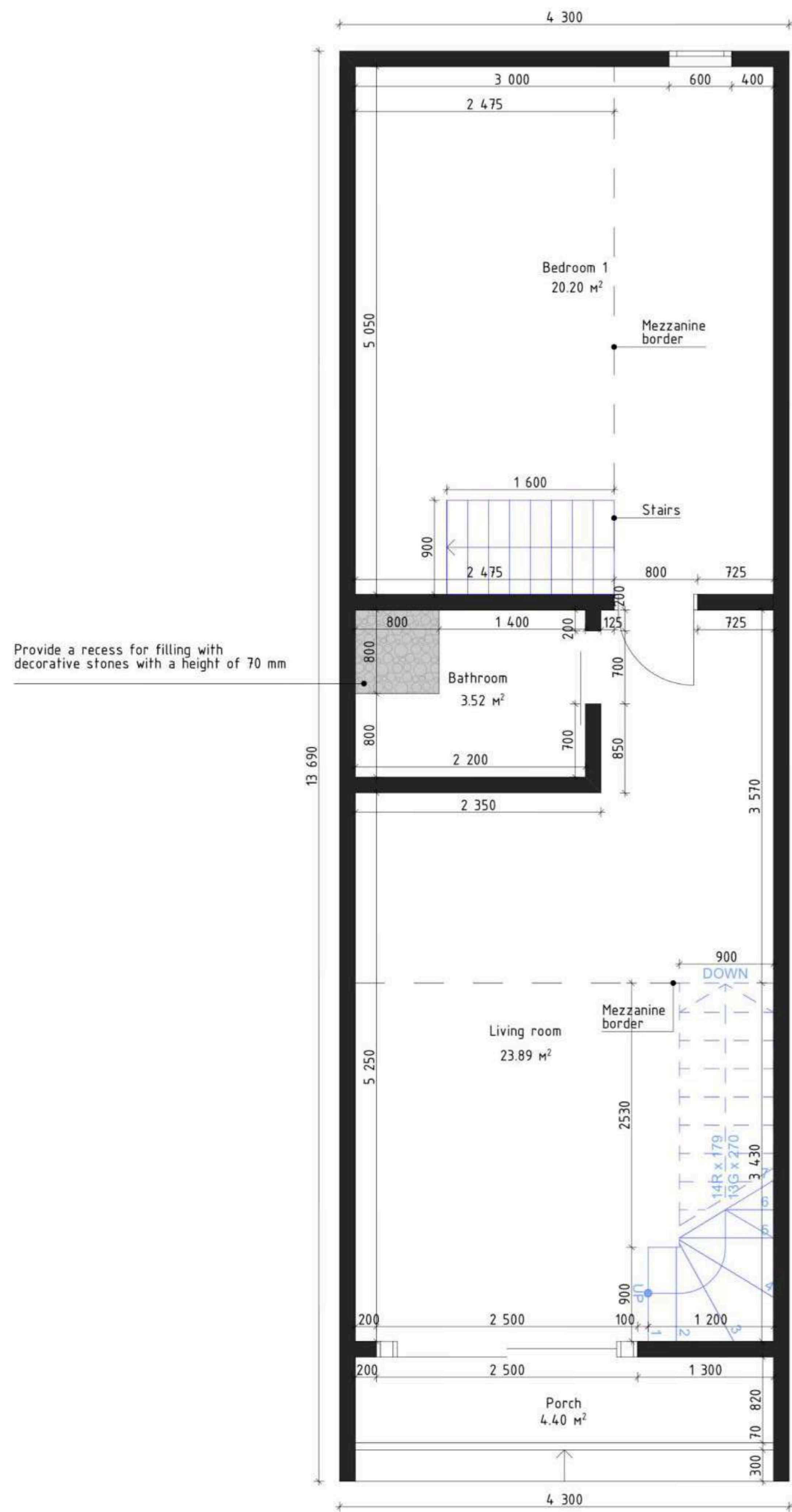
NOTE:

█ - wall (150 mm)

Total height: 4600 mm

Height of 1st floor: 2500 mm

Height of 2nd floor: 2100 mm



# PLAN 1 FLOOR

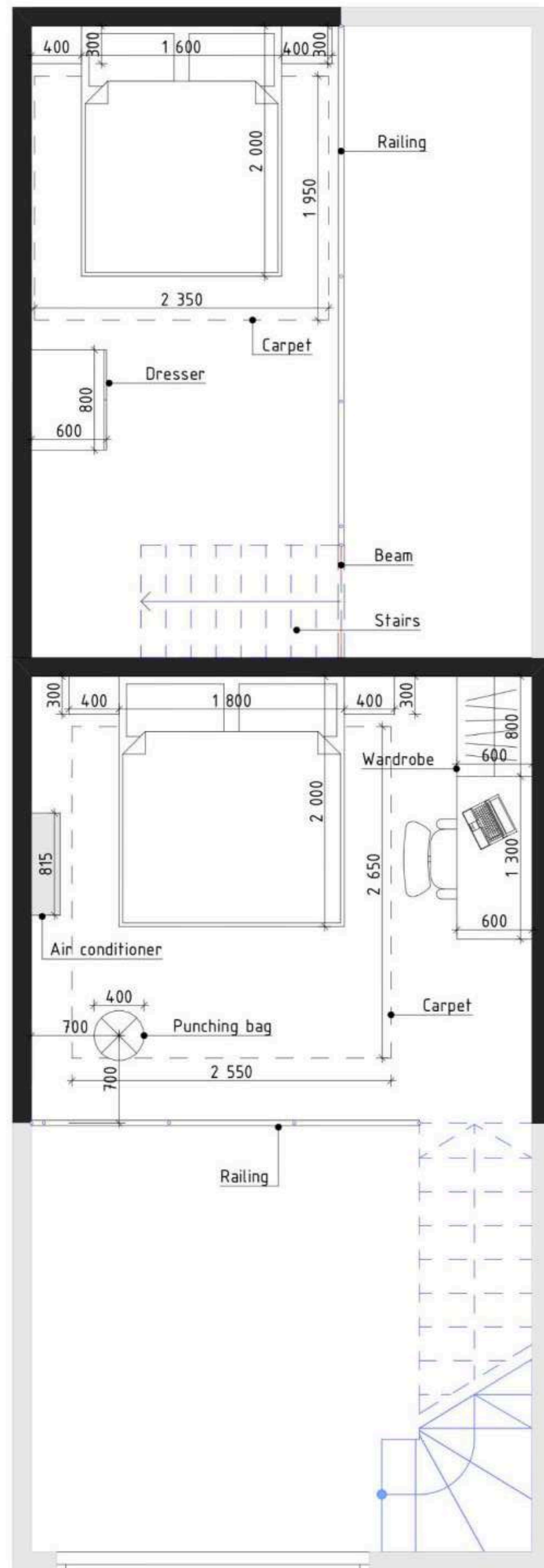
NOTE:

— wall (150 mm)

Total height: 4600 mm

Height of 1st floor: 2500 mm

Height of 2nd floor: 2100 mm



# PLAN 2 FLOOR

NOTE:

— wall (150 mm)

Total height: 4600 mm

Height of 1st floor: 2500 mm

Height of 2nd floor: 2100 mm