

# RISE VILLAS



# LAYOUT OPTION 1

## 2 BEDROOMS

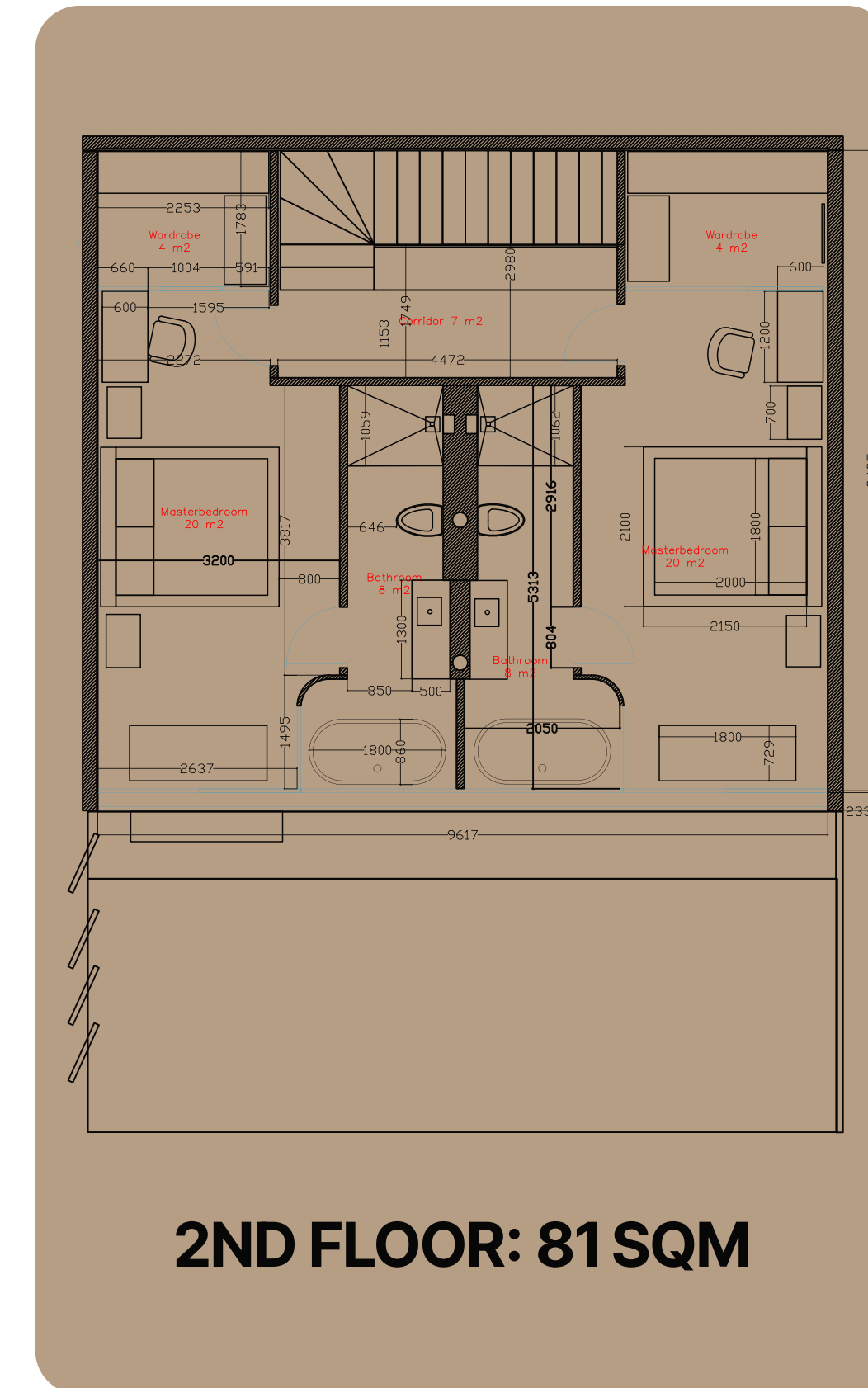
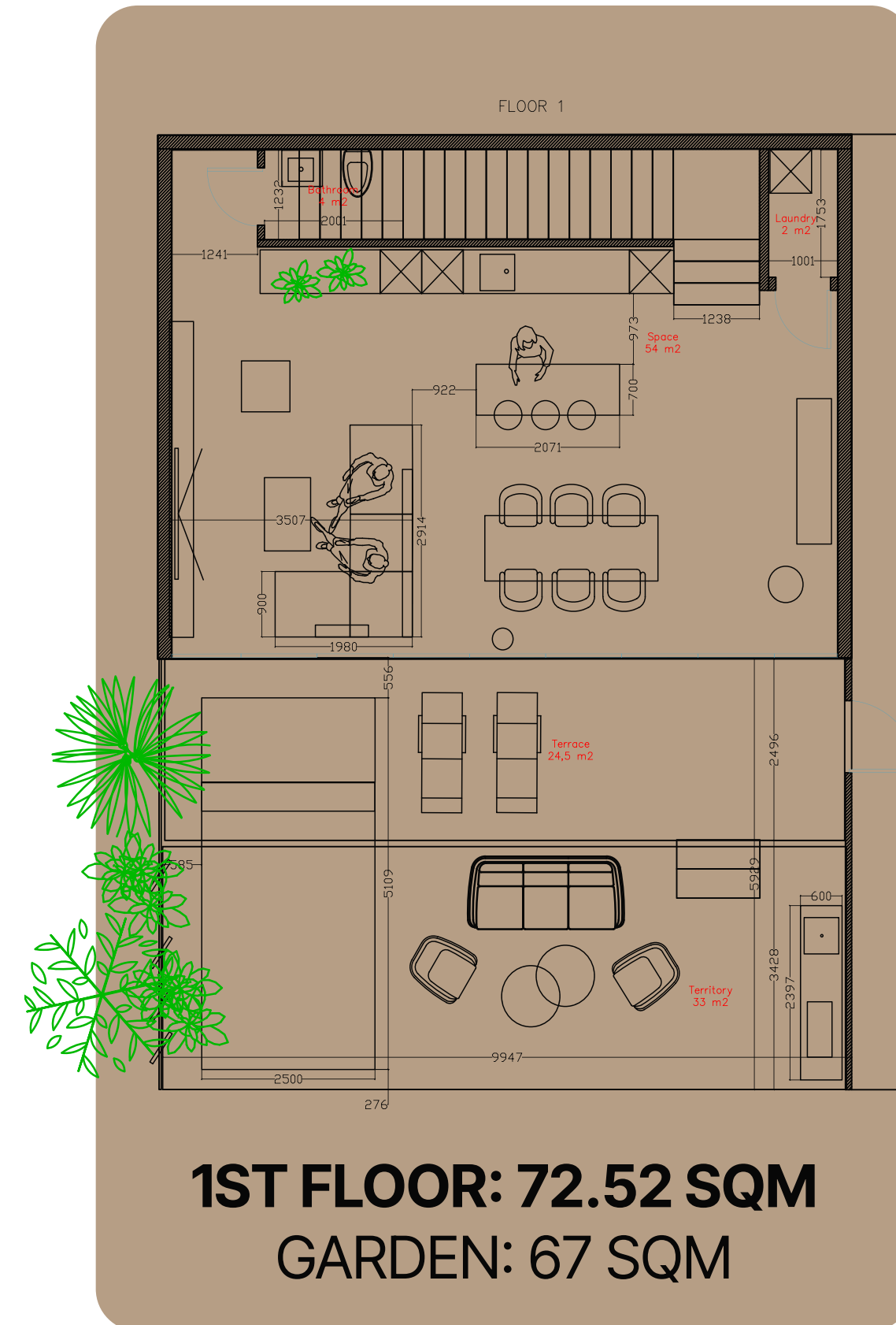


ALL TAXES INCLUDED

**\$290 000**

## FEATURES

- 2 Bedrooms
- 2 Bathrooms
- 2 Floors
- Plot area: 140 sqm
- Living area: 153.5 sqm
- Garden & outdoor area: 67 sqm
- Private pool (12.5 sqm)
- Landscaped garden
- Modern appliances
- Panoramic floor-to-ceiling windows
- Spacious living room
- Laundry room
- BBQ area



# LAYOUT OPTION 2

## 2 BEDROOMS

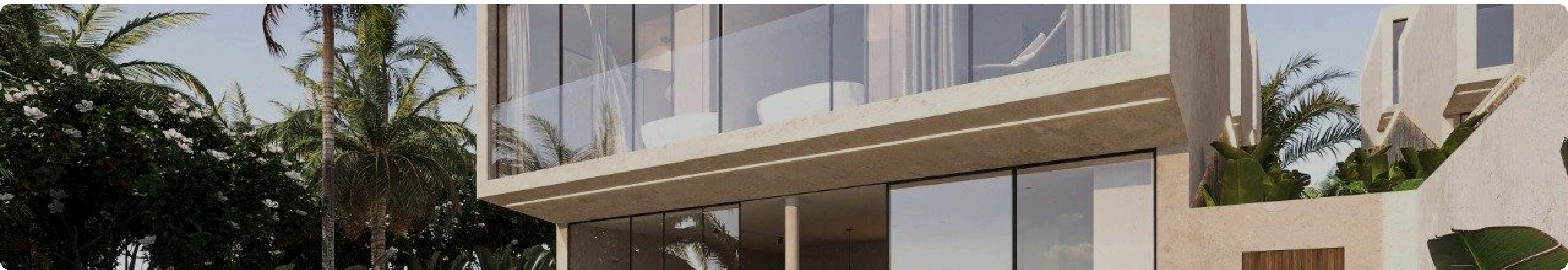
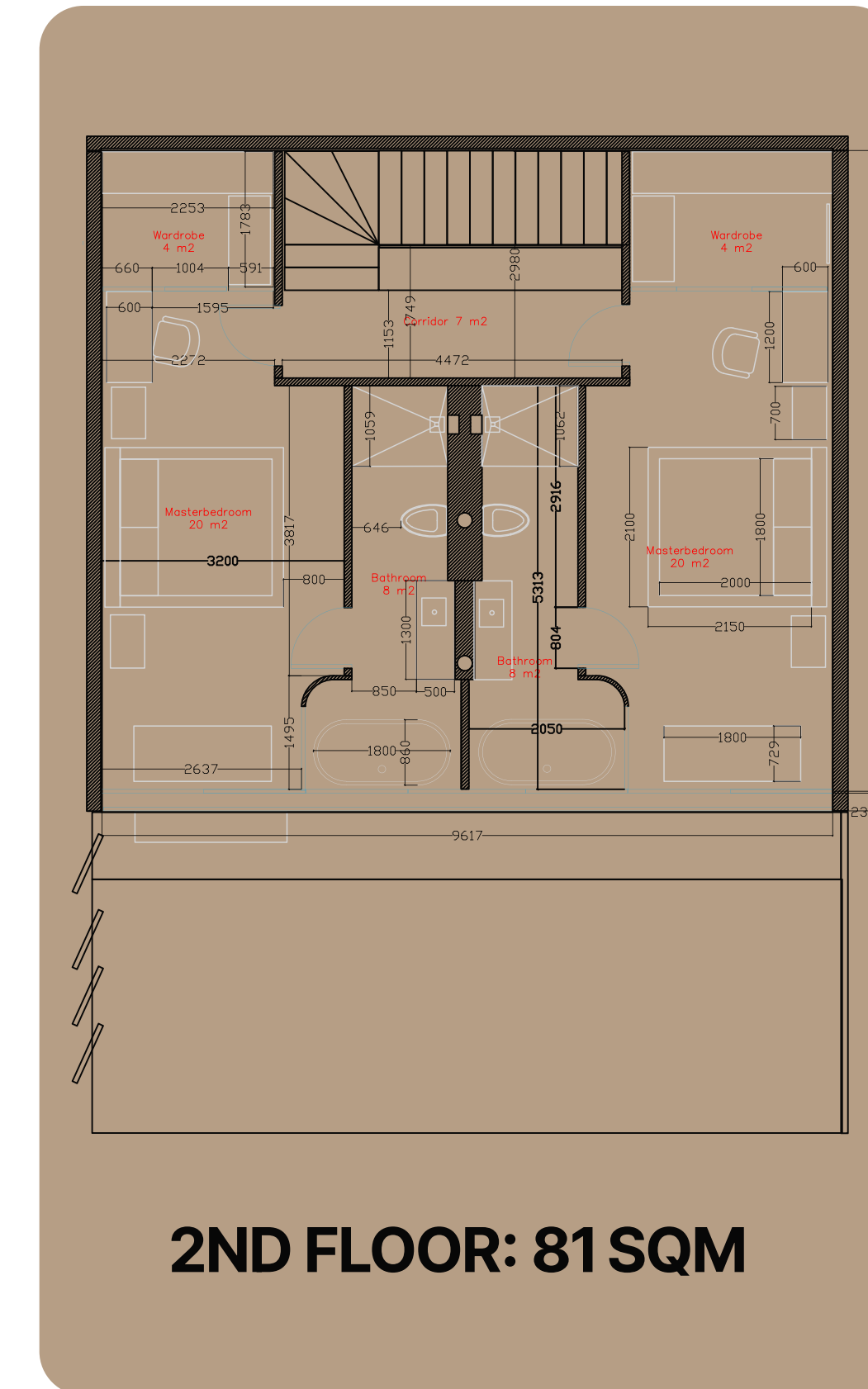
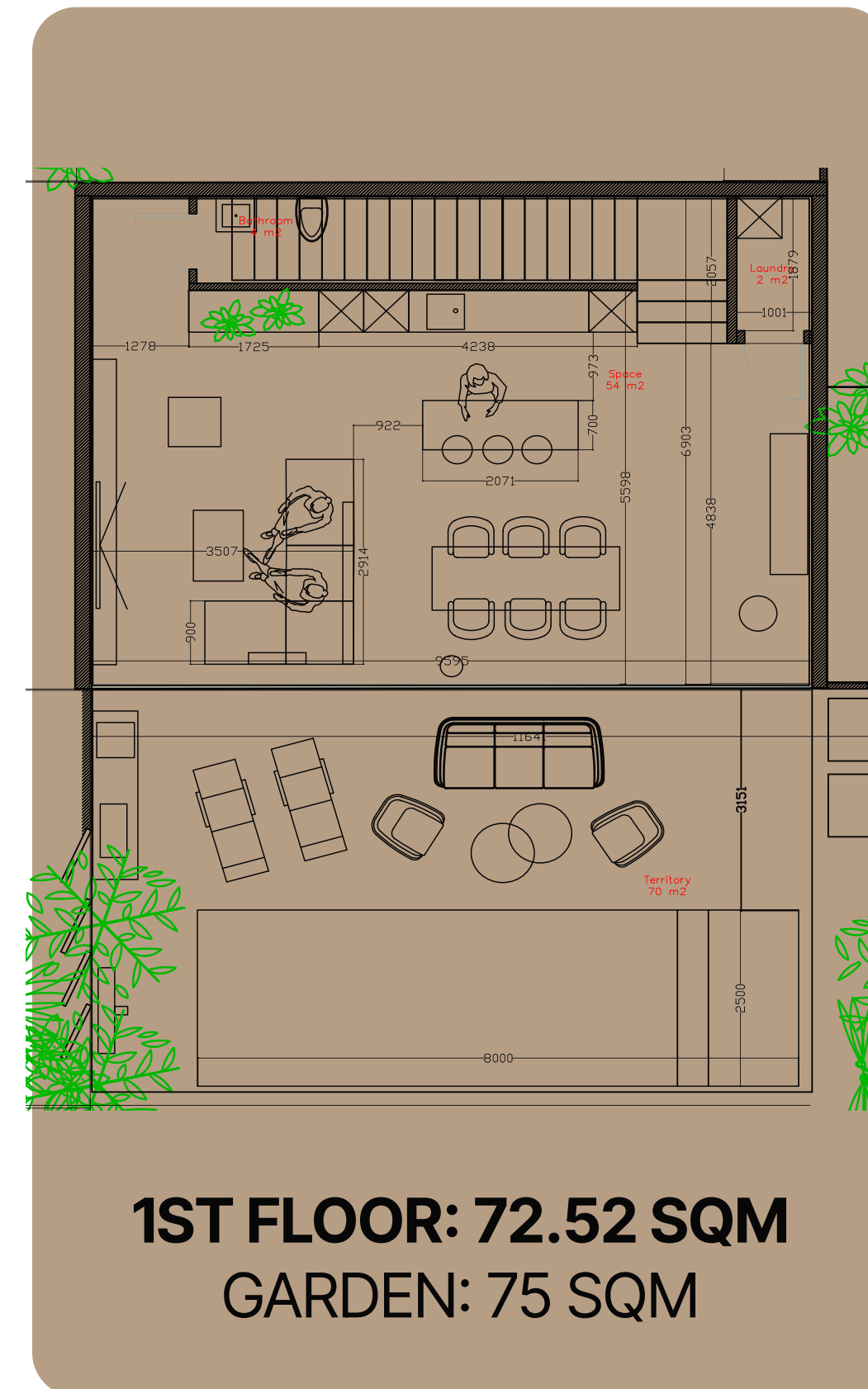


ALL TAXES INCLUDED

**\$320 000**

## FEATURES

- 2 Bedrooms
- 2 Bathrooms
- 2 Floors
- Plot area: 140 sqm
- Living area: 153.5 sqm
- Garden & outdoor area: 75 - 97.5 sqm
- Private pool (20 sqm)
- Landscaped garden
- Modern appliances
- Panoramic rice terrace views
- Spacious living room
- Laundry room
- BBQ area



# LAYOUT OPTION 3

## 1 BEDROOM

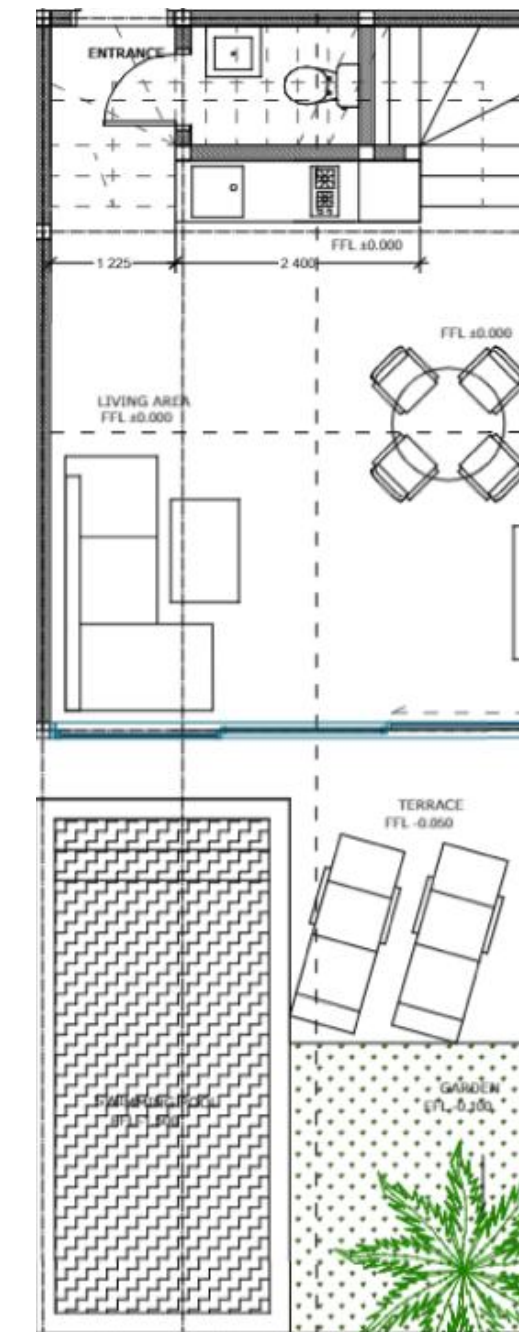


ALL TAXES INCLUDED

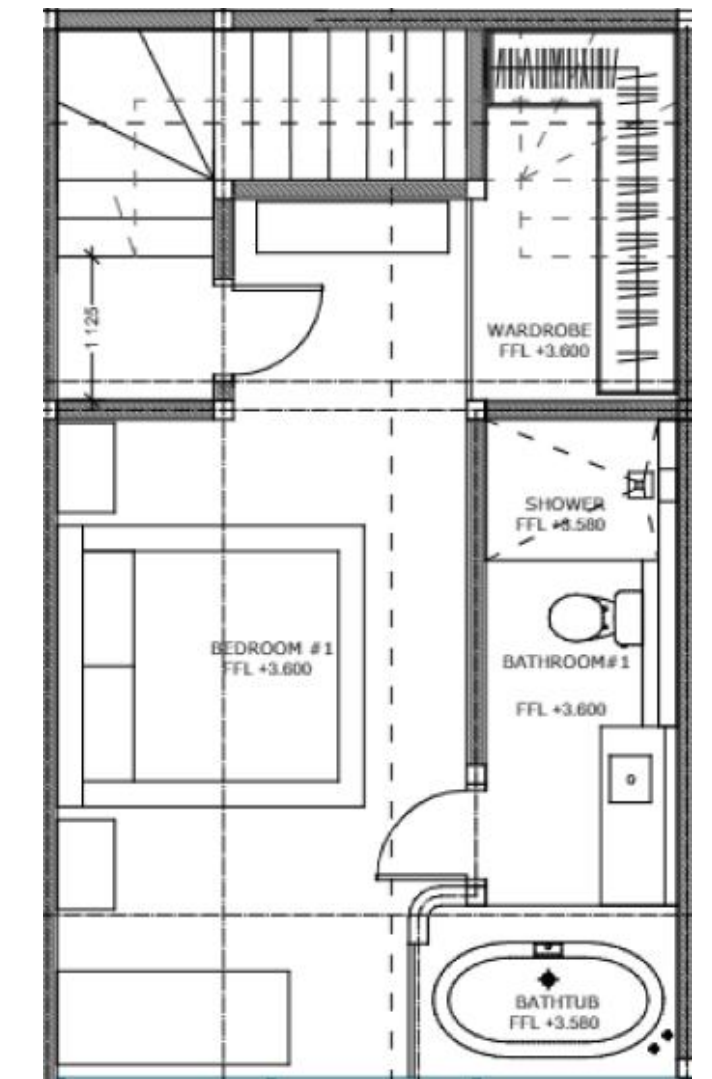
**\$190 000**

## FEATURES

- 1 Bedroom
- 2 Bathrooms
- 2 Floors
- Plot area: 69.7 sqm
- Living area: 75.75 sqm
- Garden & outdoor area: 33 sqm
- Private pool (12.5 sqm)
- Landscaped garden
- Modern appliances
- Panoramic floor-to-ceiling windows
- Spacious living room
- Laundry room



**1ST FLOOR: 36.2 SQM**  
GARDEN: 33 SQM



**2ND FLOOR: 44.1 SQM**

