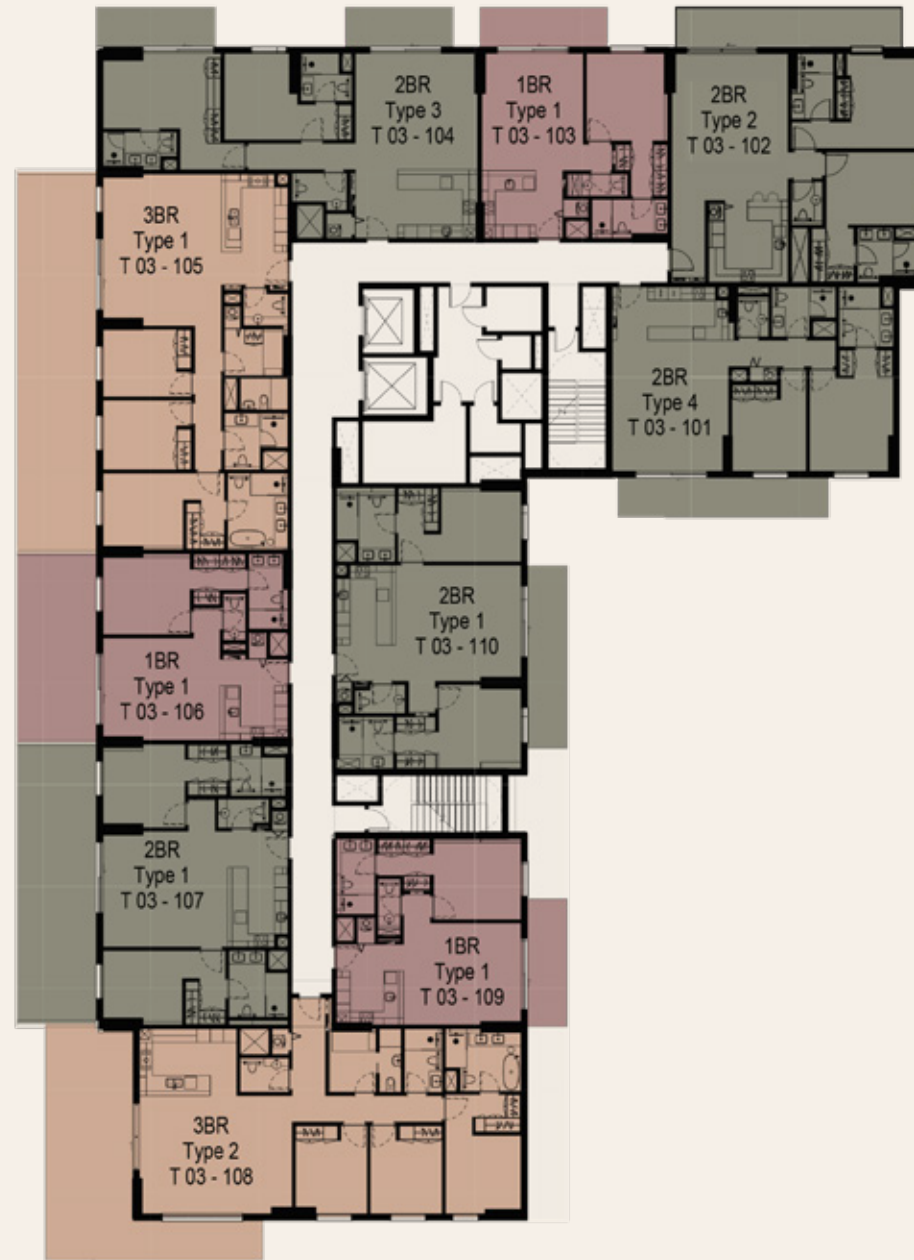
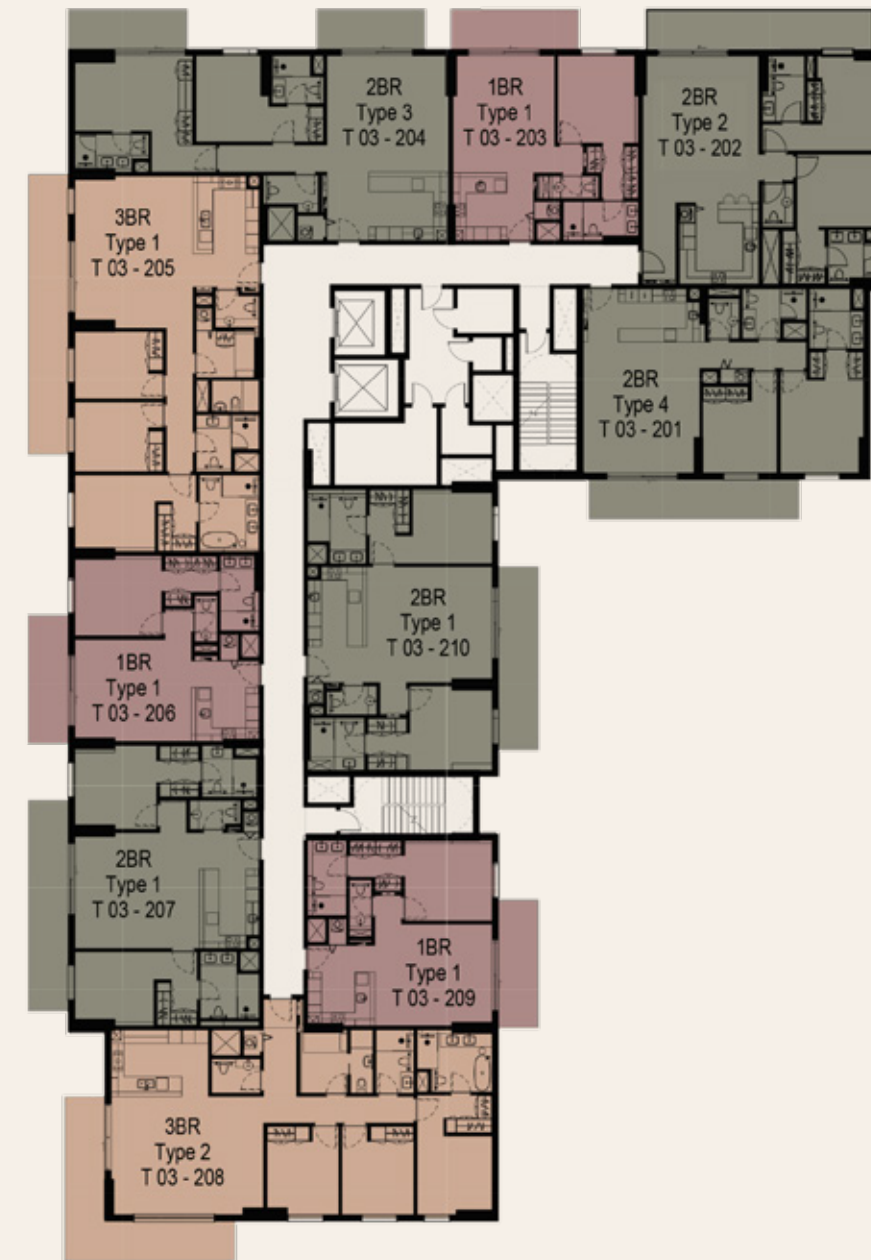


FLOOR PLANS



First Floor

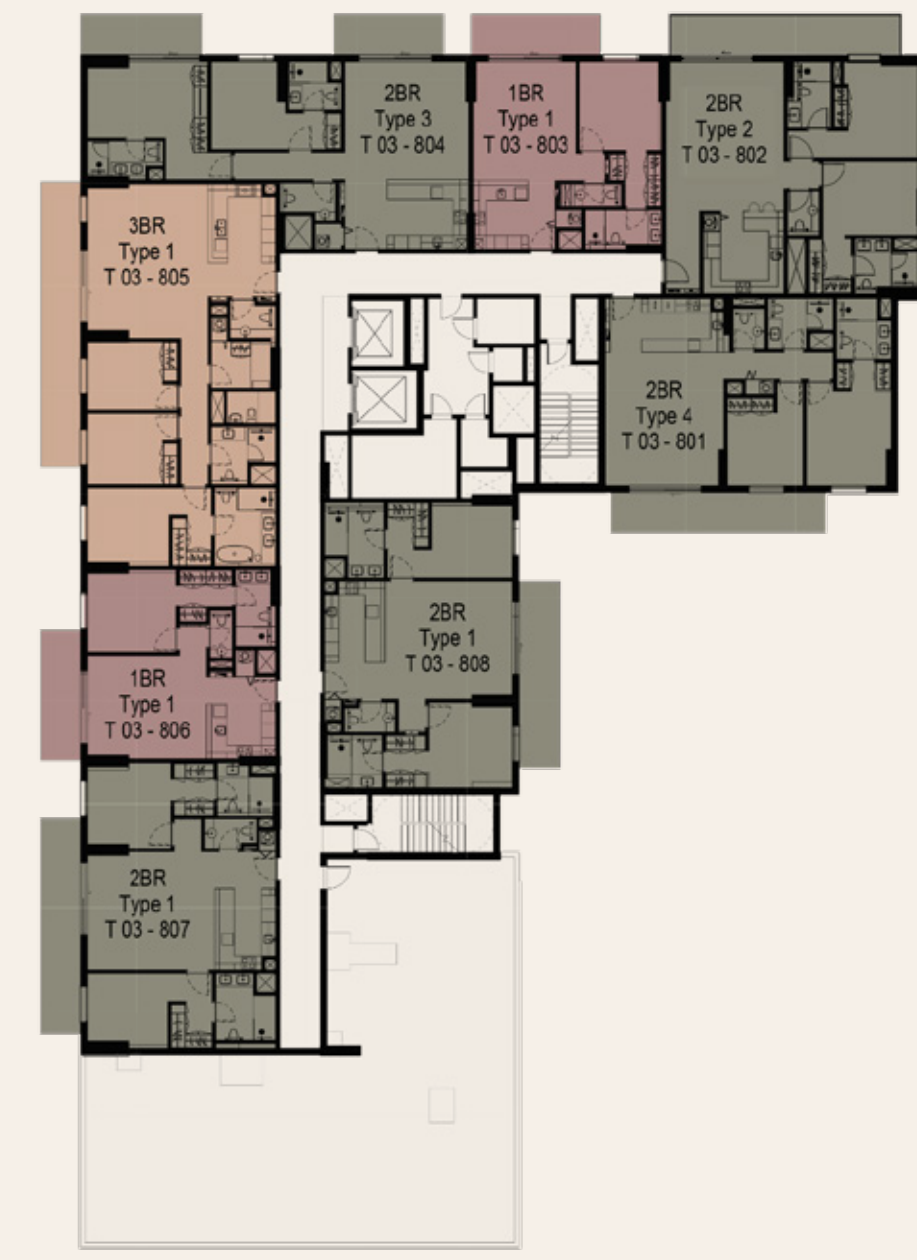
- 1BR
- 2BR - Type 1 / Type 2 / Type 3 / Type 4
- 3BR - Type 1 / Type 2



Typical Floor

From 2<sup>nd</sup> Floor to 7<sup>th</sup> Floor

- 1BR
- 2BR - Type 1 / Type 2 / Type 3 / Type 4
- 3BR - Type 1 / Type 2



Typical Top Floor

From 8<sup>th</sup> Floor to 9<sup>th</sup> Floor

- 1BR
- 2BR - Type 1 / Type 2 / Type 3 / Type 4
- 3BR - Type 1 / Type 2

## UNIT PLANS

# One Bedroom

### Area:

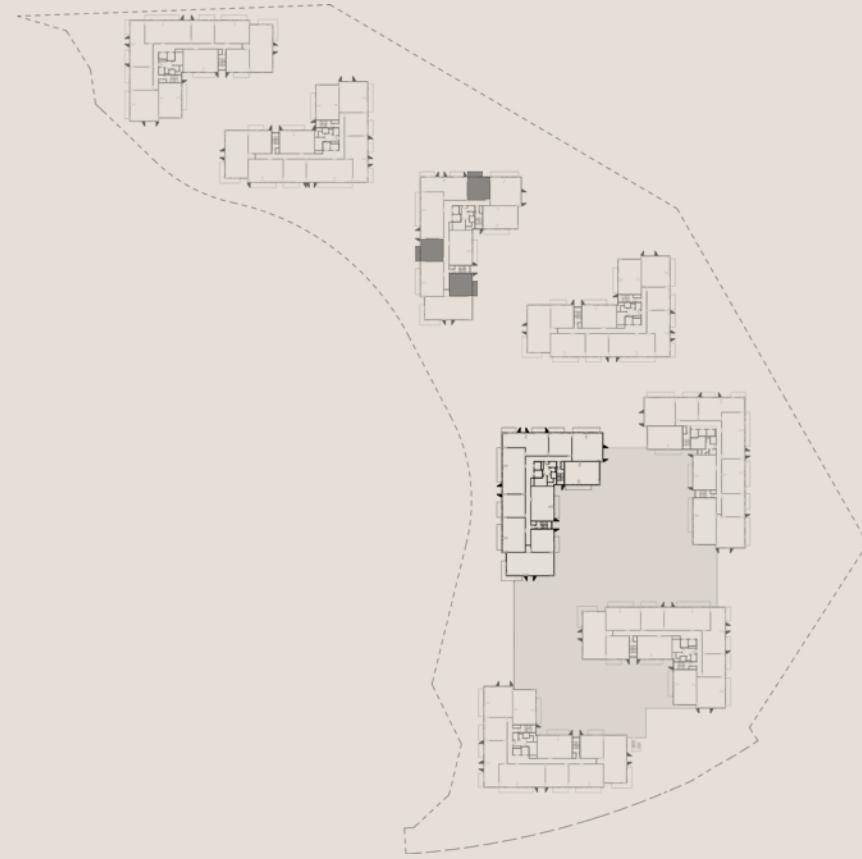
72 sqm / 771 - 776 sqft

### Balcony area:

11 sqm / 119 - 120 sqft

### Total Area:

83 - 104 sqm /  
890 - 1118 sqft



UNIT PLANS

# Two Bedroom

**Type 01**

**Area:**

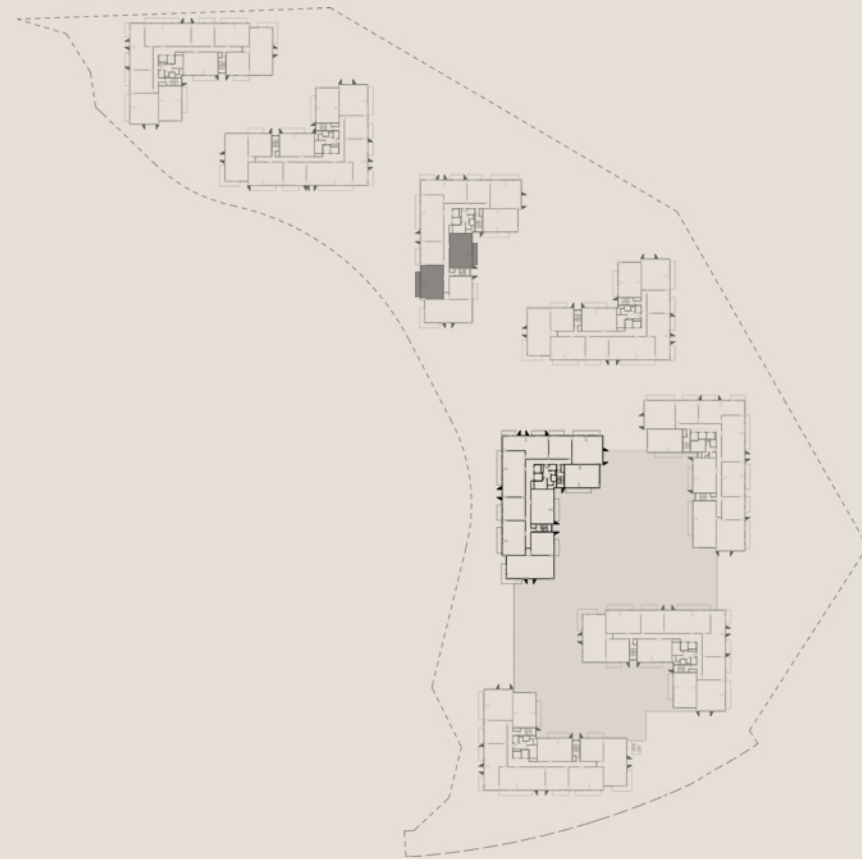
107 - 108 sqm /  
1,157 - 1,165 sqft

**Balcony area:**

16 - 19 sqm /  
174 - 200 sqft

**Total Area:**

124 - 156 sqm/  
1,337 - 1,675 sqft



UNIT PLANS

# Two Bedroom

Type 02

Area:

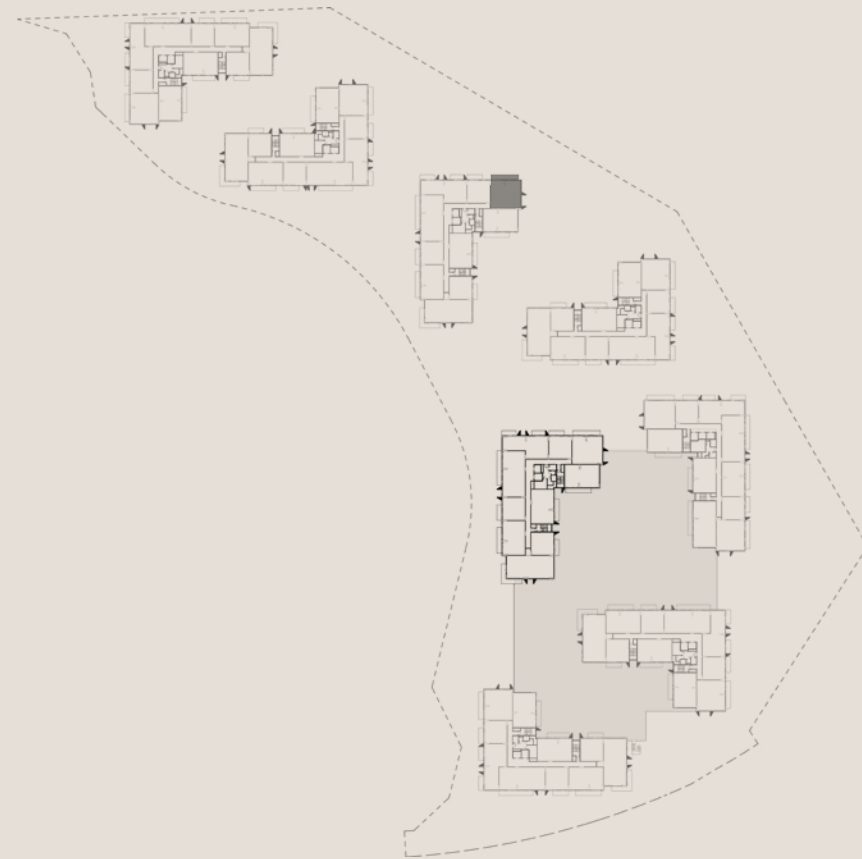
117 sqm / 1,257sqft

Balcony area:

20 sqm / 216 sqft

Total Area:

137 sqm / 1,473 sqft



## UNIT PLANS

# Two Bedroom

Type 03

Area:

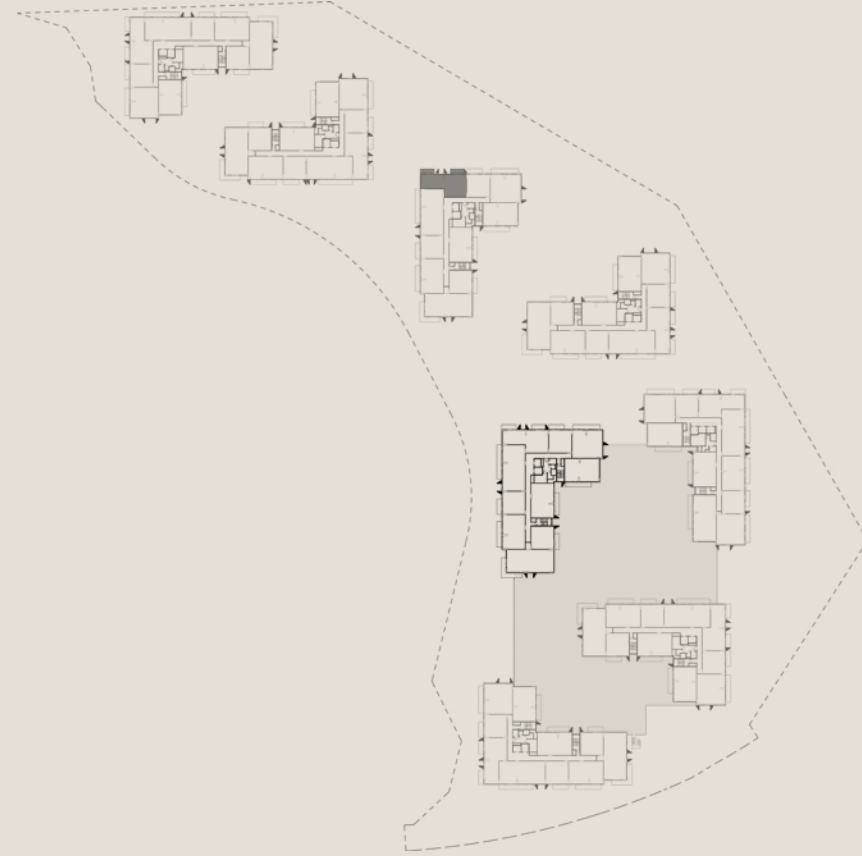
116 sqm / 1,253 sqft

Balcony area:

20 sqm / 217sqft

Total Area:

137 sqm / 1,470 sqft



## UNIT PLANS

# Two Bedroom

Type 04

Area:

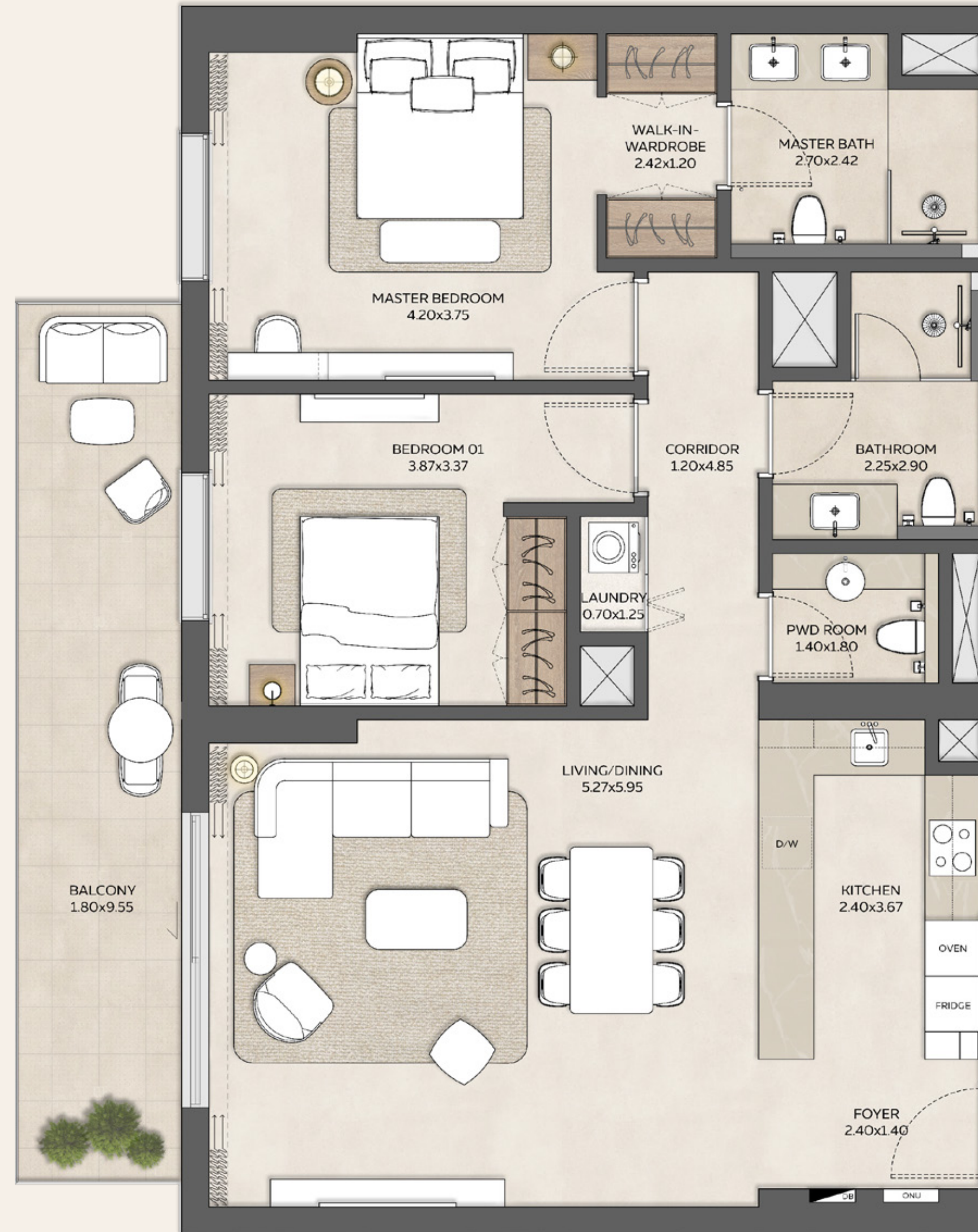
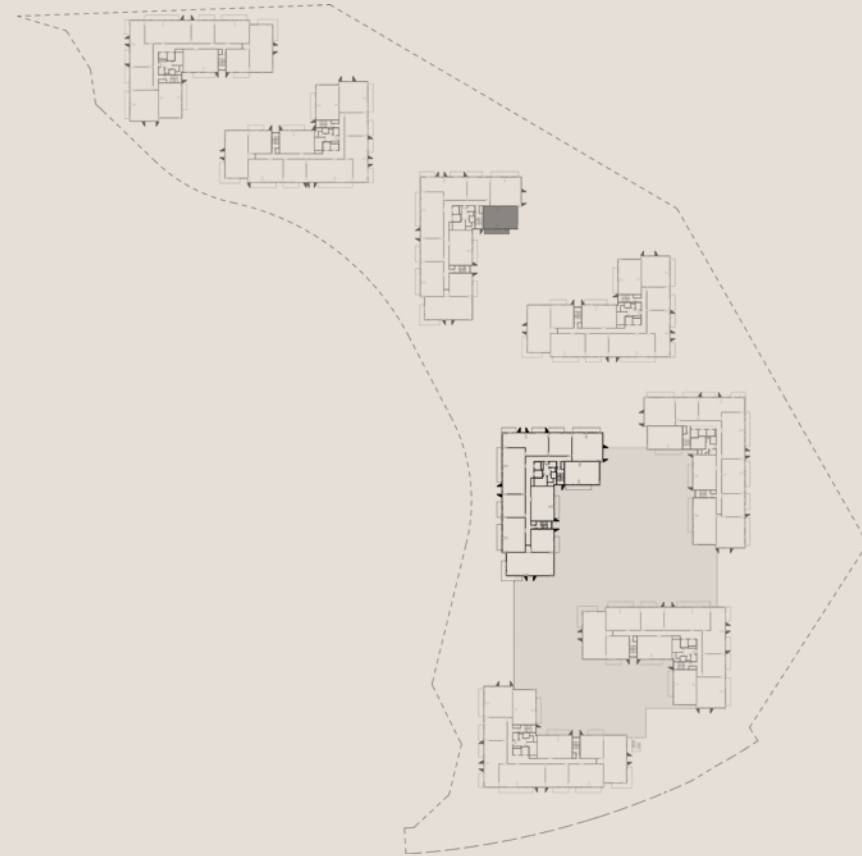
108 sqm / 1,162 sqft

Balcony area:

19 sqm / 199 sqft

Total Area:

126 sqm / 1,361 sqft



UNIT PLANS

# Three Bedroom

Type 01

Area:

144 sqm /

1,551 - 1,552 sqft

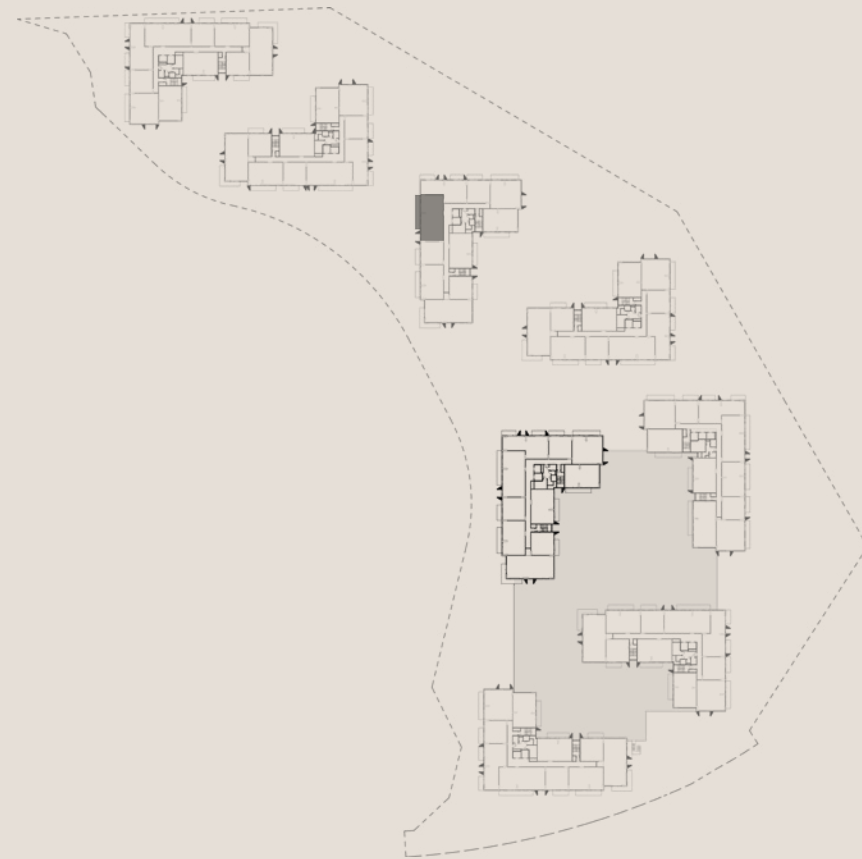
Balcony area:

25 sqm / 269 sqft

Total Area:

169 - 209 sqm /

1,820 - 2,251 sqft



## UNIT PLANS

# Three Bedroom

### Type 02

#### Area:

149 - 150 sqm /

1,607 - 1,610 sqft

#### Balcony area:

26 sqm / 275 sqft

#### Total Area:

175 - 204 sqm /

1,882 - 2,197 sqft

