



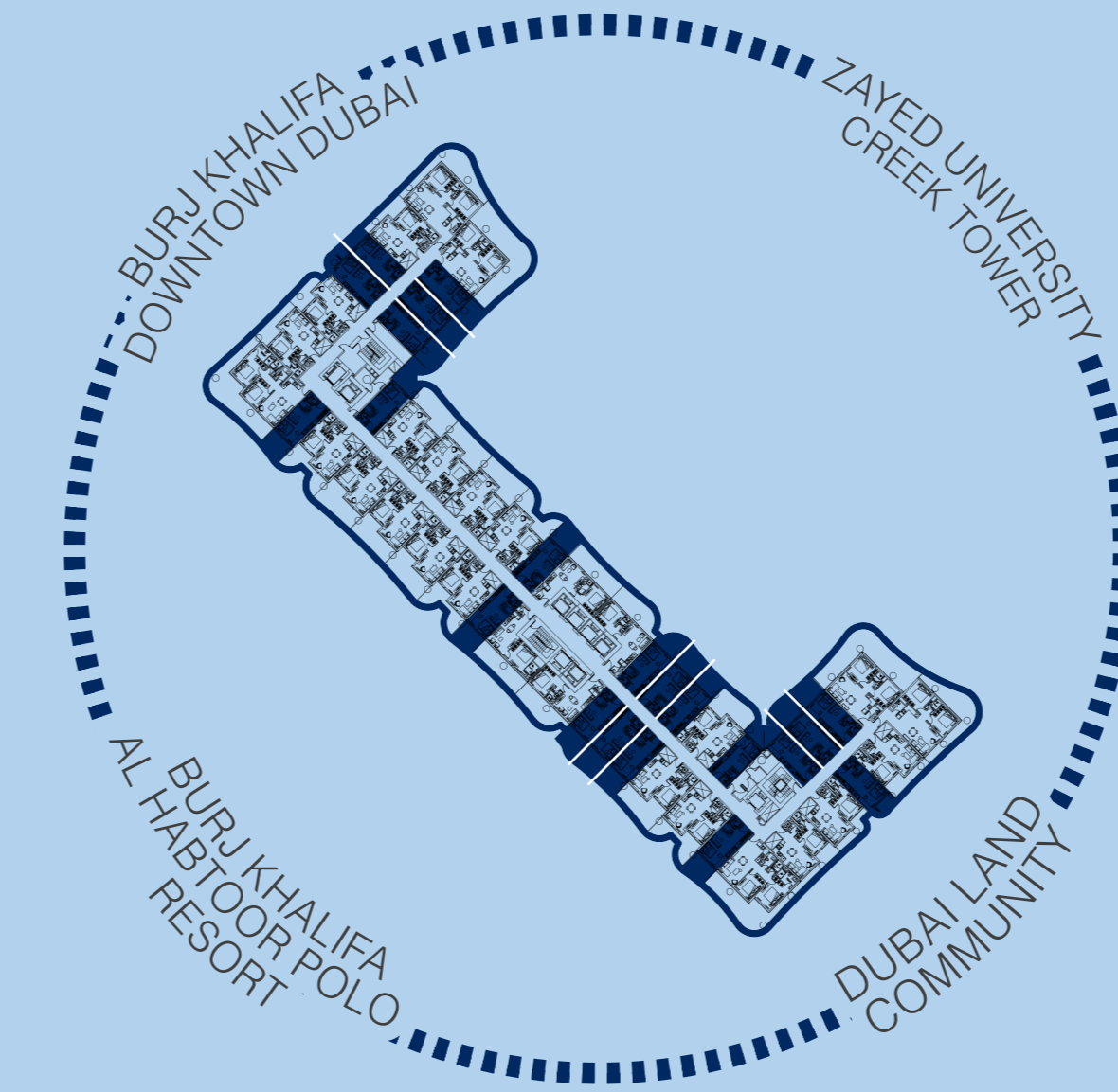
SUITE

ALL SUITES ARE THOUGHTFULLY PLANNED AROUND THE CORE DESIGN PRINCIPLE OF FUNCTIONAL SPACE UTILIZATION. LARGE PANORAMIC WINDOWS AND SLIDING ALUMINIUM WINDOW SYSTEMS BRING IN NATURAL LIGHT, ENHANCING THE SENSE OF OPENNESS THROUGHOUT EACH INTERIOR. A KEY FEATURE OF EVERY SUITE IS THE FULLY FITTED KITCHEN, PRODUCED IN ITALY UNDER THE LA CUCINA OTTO CONCEPT AND DESIGNED TO COMBINE MODERN AESTHETICS WITH EVERYDAY PRACTICALITY. CRAFTED FROM FINGERPRINT-RESISTANT MATERIALS AND EQUIPPED WITH BUILT-IN APPLIANCES BY THE GERMAN BRAND BOSCH, THE KITCHEN OFFERS A COMPLETE, HIGH-QUALITY SOLUTION CREATED FOR COMFORTABLE MODERN LIVING.



BUILT-IN APPLIANCES BY BOSCH

LA CUCINA OTTO
TRADITION, TASTE, AND TIMELESS DESIGN

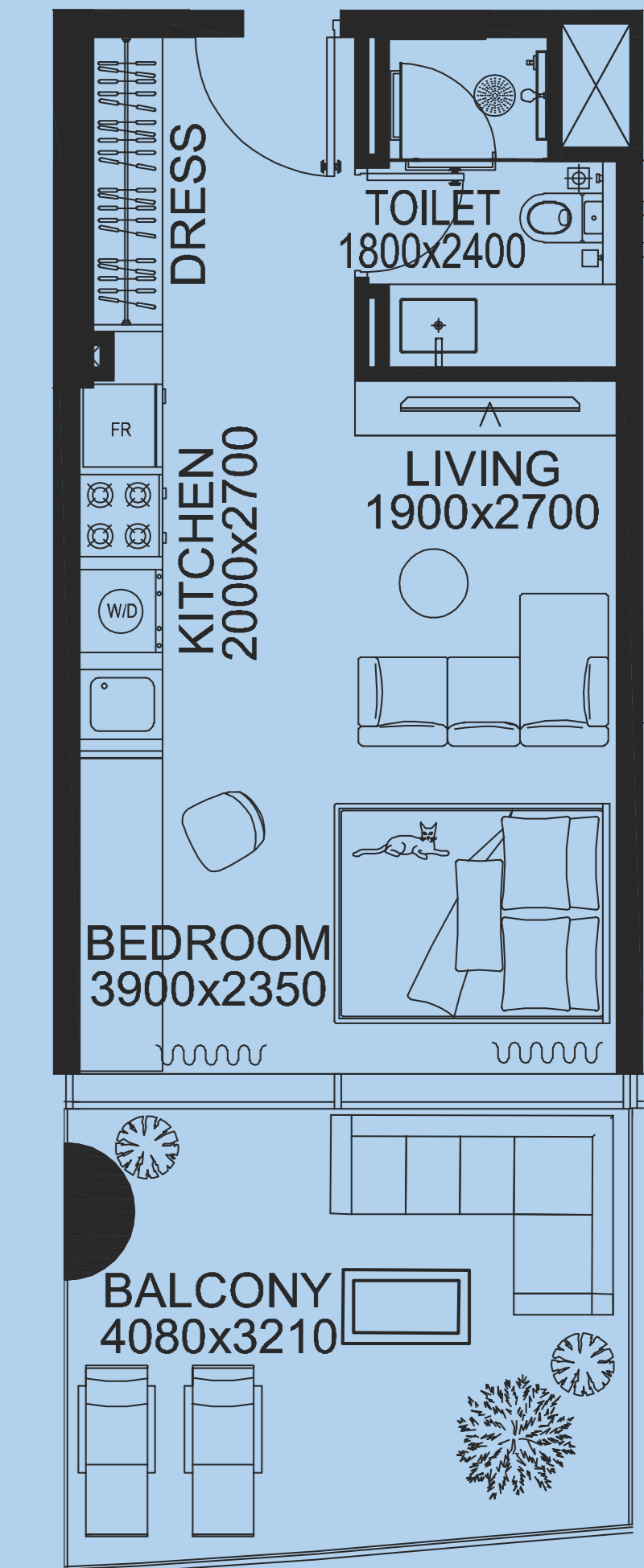


SUITES SMARTLY PLANNED

LOCATED BETWEEN THE 17TH AND 38TH FLOORS,
WITH OPEN VIEWS, ABUNDANT NATURAL LIGHT,
AND AN ELEVATED PANORAMIC LIVING EXPERIENCE

TOTAL AREAS RANGE FROM 377 TO 511 SQ. FT. (35 TO 47 SQ. M.)
PRICES START FROM AED 709,000 AND REACH UP TO AED 840,000

The suites at The WOW Tower are designed with a contemporary approach to functional planning, where every square meter is thoughtfully arranged to support comfortable modern living. The layouts are efficient, intuitive and easy to enjoy, creating well-balanced spaces that bring together relaxation, daily routines and practical use. Carefully positioned living areas are enhanced by natural light, while balconies extend each residence outward, offering a private outdoor setting for unwinding or enjoying the view. Floor-to-ceiling sliding windows further enhance the sense of openness, connecting the interiors with the skyline and filling the suites with a bright, airy atmosphere.





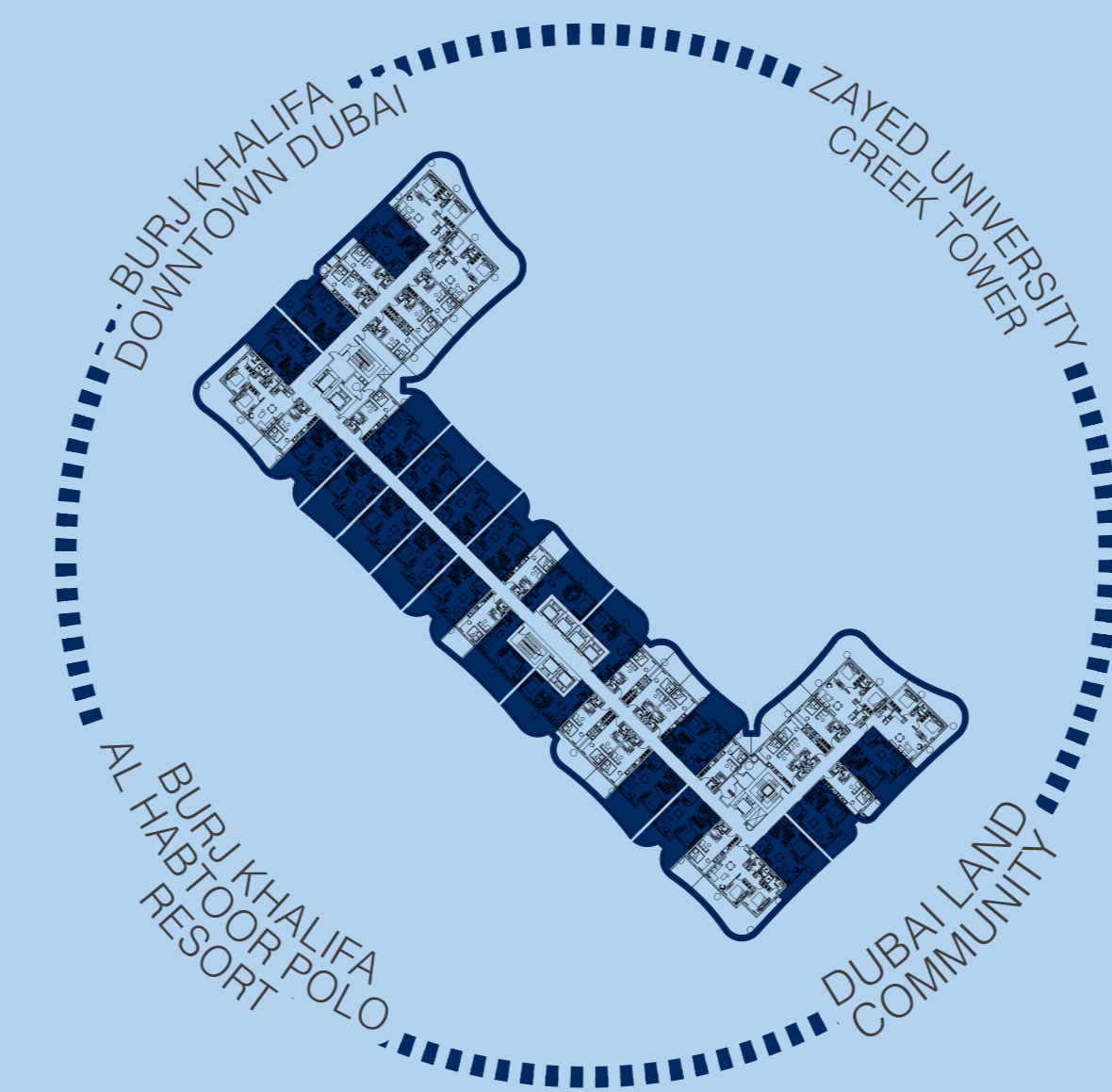
ONE-BEDROOM

ALL LAYOUTS ARE THOUGHTFULLY PLANNED AROUND THE CORE DESIGN PRINCIPLE OF FUNCTIONAL SPACE UTILIZATION. LARGE PANORAMIC WINDOWS AND SLIDING ALUMINIUM WINDOW SYSTEMS BRING IN NATURAL LIGHT AND ENHANCE THE SENSE OF OPENNESS THROUGHOUT THE INTERIORS. A KEY FEATURE OF EACH RESIDENCE IS THE WELL-DESIGNED KITCHEN, CRAFTED FROM FINGERPRINT-RESISTANT MATERIALS AND EQUIPPED WITH HIGH-QUALITY BUILT-IN APPLIANCES. PRODUCED IN ITALY, THE KITCHEN FORMS PART OF THE PROJECT'S SIGNATURE CONCEPT KNOWN AS CUCINA OTTO.



BUILT-IN APPLIANCES BY BOSCH

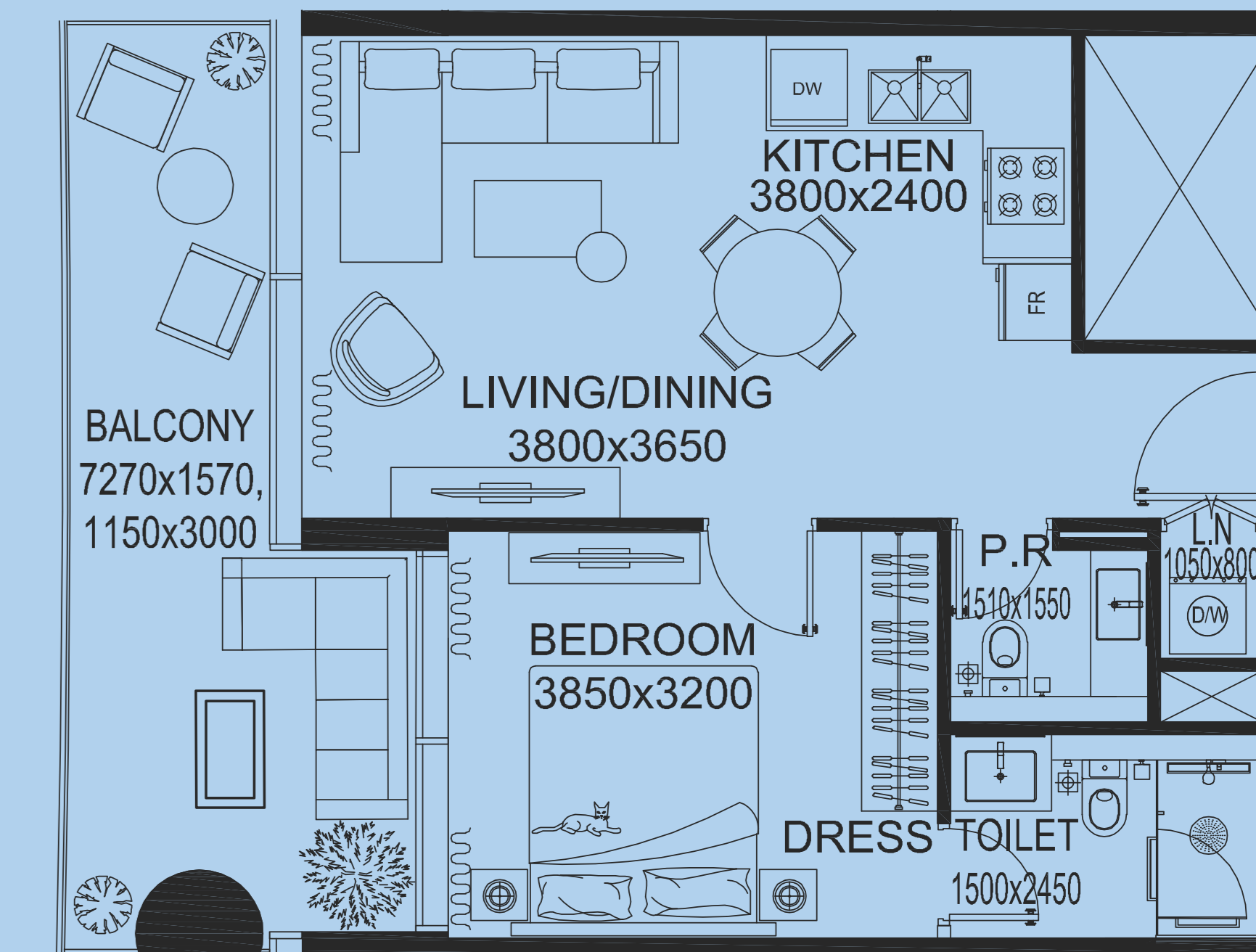
LA CUCINA OTTO
TRADITION, TASTE, AND TIMELESS DESIGN



CLASSIC ONE-BEDROOM RESIDENCE

A TIMELESS AND MOST IN-DEMAND ONE-BEDROOM RESIDENCE DESIGNED WITH TWO BATHROOMS, PRIVATE LAUNDRY AND MULTIPLE VIEW ORIENTATIONS

TOTAL AREAS FROM 670 TO 842 SQ. FT. (62 TO 78 SQ. M.)
PRICES START FROM APPROXIMATELY
AED 1,084,000 AND GO UP TO AROUND AED 1,436,000



The one-bedroom apartment at The WOW Tower represents one of the market's most sought-after and versatile layouts, combining daily functionality with a refined residential feel. Designed around comfortable modern living, it features a corner Italian kitchen, handcrafted with a strong emphasis on quality, practicality and timeless design. All built-in kitchen appliances are by Bosch, while a dedicated utility space near the entrance provides a separate area for both a washing machine and dryer, helping keep the main living areas clean and well organized.

The interior specification is further elevated by Italian built-in wardrobes, handcrafted with the same attention to detail and enhanced by integrated LED lighting inside. Together, these elements create a residence that feels polished, efficient and easy to live in — a classic one-bedroom format with strong market appeal, well suited for both end users and investors.



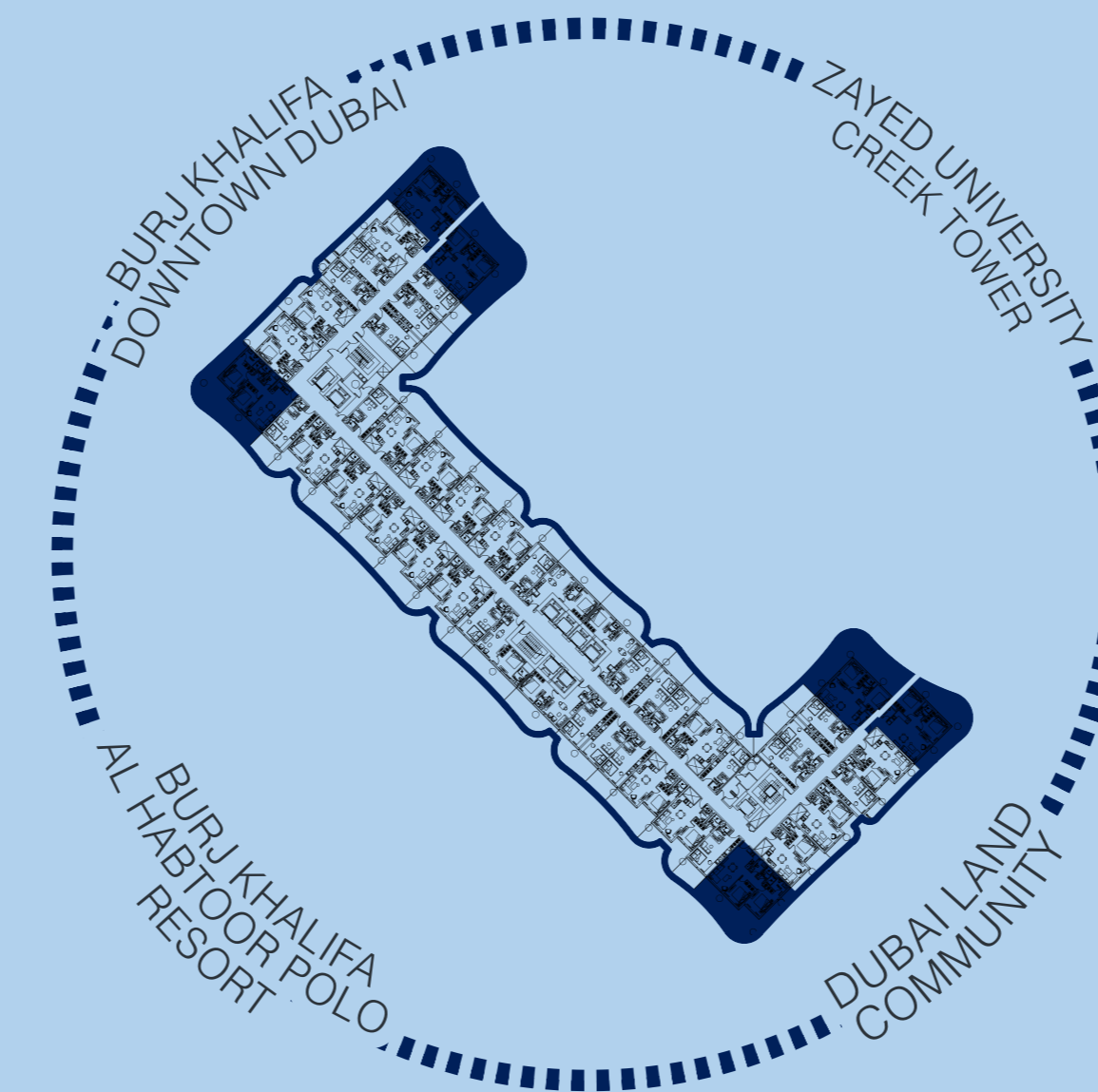
TWO-BEDROOM

ALL LAYOUTS ARE THOUGHTFULLY PLANNED AROUND THE CORE DESIGN PRINCIPLE OF FUNCTIONAL SPACE UTILIZATION. LARGE PANORAMIC WINDOWS AND SLIDING ALUMINIUM WINDOW SYSTEMS BRING IN NATURAL LIGHT AND ENHANCE THE SENSE OF OPENNESS THROUGHOUT THE INTERIORS. A KEY FEATURE OF EACH RESIDENCE IS THE WELL-DESIGNED KITCHEN, CRAFTED FROM FINGERPRINT-RESISTANT MATERIALS AND EQUIPPED WITH HIGH-QUALITY BUILT-IN APPLIANCES. PRODUCED IN ITALY, THE KITCHEN FORMS PART OF THE PROJECT'S SIGNATURE CONCEPT KNOWN AS CUCINA OTTO.



BUILT-IN APPLIANCES BY BOSCH

LA CUCINA OTTO
TRADITION, TASTE, AND TIMELESS DESIGN



LIMITED CORNER TWO-BEDROOM RESIDENCES

A RARE COLLECTION OF CORNER APARTMENTS WITH TWO BEDROOMS, THREE BATHROOMS, PANORAMIC WINDOWS AND OPEN CITY VIEWS.

TOTAL AREAS FROM 1,220 TO 1,461 SQ. FT. (113 TO 136 SQ. M.)
PRICES START FROM APPROXIMATELY
AED 1.88 MILLION AND GO UP TO AROUND AED 2.44 MILLION

The 2-bedroom corner apartments at The WOW Tower are among the building's most distinctive and limited layouts, defined by their rare corner configuration, wider views and stronger natural light. With two separate bedrooms, three bathrooms and panoramic glazing, these homes offer a brighter atmosphere and a greater sense of space.

Designed for elevated everyday living, they feature Italian tailor-made kitchens, built-in Bosch appliances, and Italian wardrobes with integrated LED lighting and elegant glass doors in aluminium frames. Produced in Italy, including San Marino, and assembled by experienced European specialists, these apartments combine refined craftsmanship, functionality and a strong signature character within the tower.

