

General plan

Technical & Economic Parameters

Name	Area m ²
Build-up	740,48
1-st floor	740,48
2-d floor	740,48
4-th floor	755,01
2-d floor	755,01
Total Building area	2 991

Main Building

Name	Area m ²
Admin	446,5
Apartments	2 135,6
Total	2 582,1

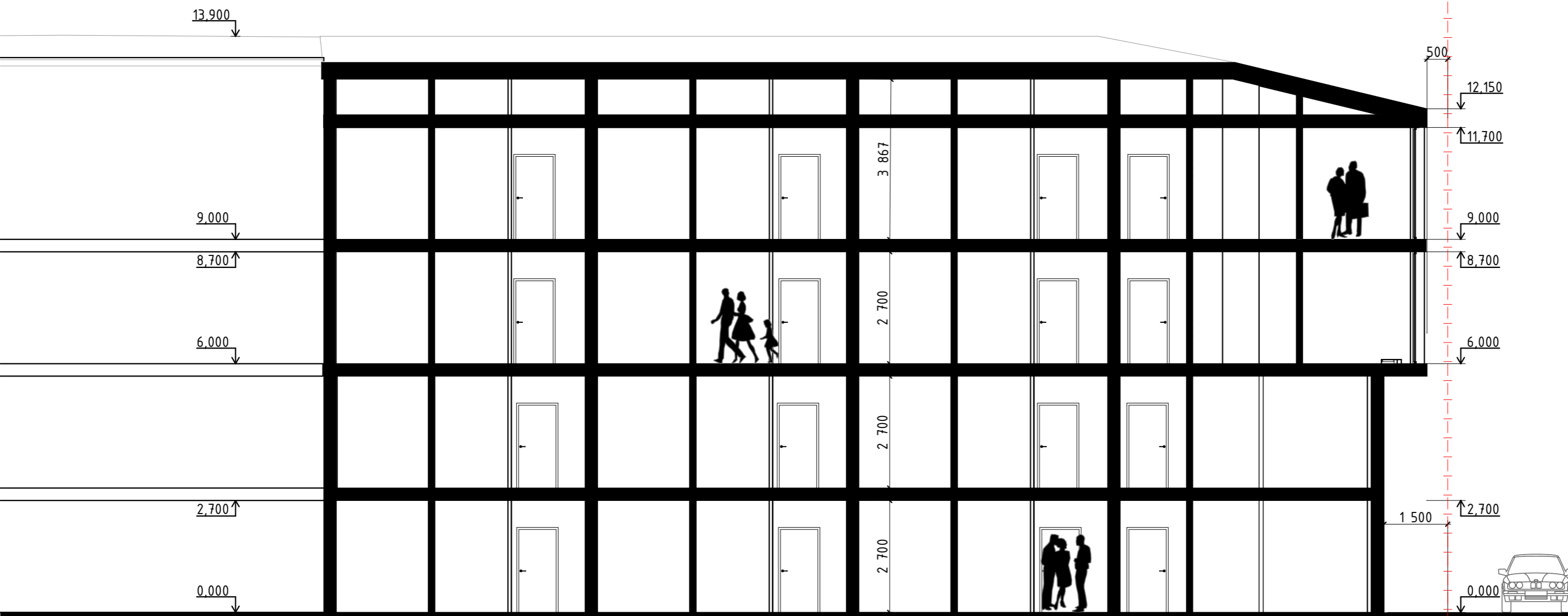
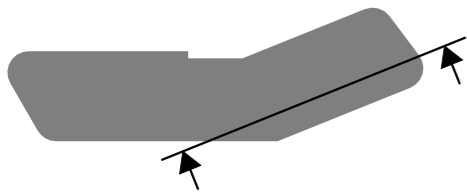
Apartments

Name	m ² x pcs. = m ²
1 Type 1	30 x 24 = 720,0
2 Type 2	29,5 x 4 = 118,0
3 Type 3	30,9 x 4 = 123,5
4 Type 4	39 x 24 = 936,0
5 Type 5	32,5 x 2 = 63,0
6 Type 6	30,7 x 2 = 61,5
7 Type 7	25,3 x 2 = 50,6
8 Type 8	26,1 x 2 = 52,1
	64 2 124,7 m ²

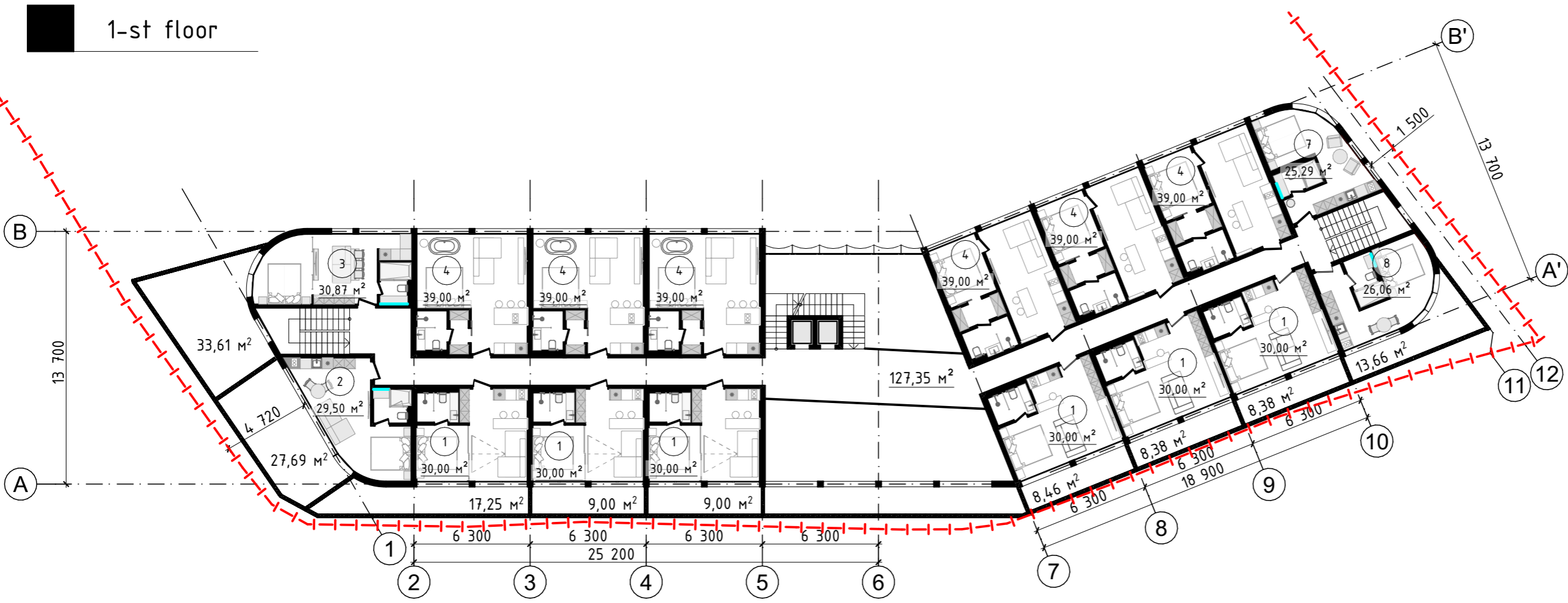
Plan Legend

Nº	Name
1	Apart building

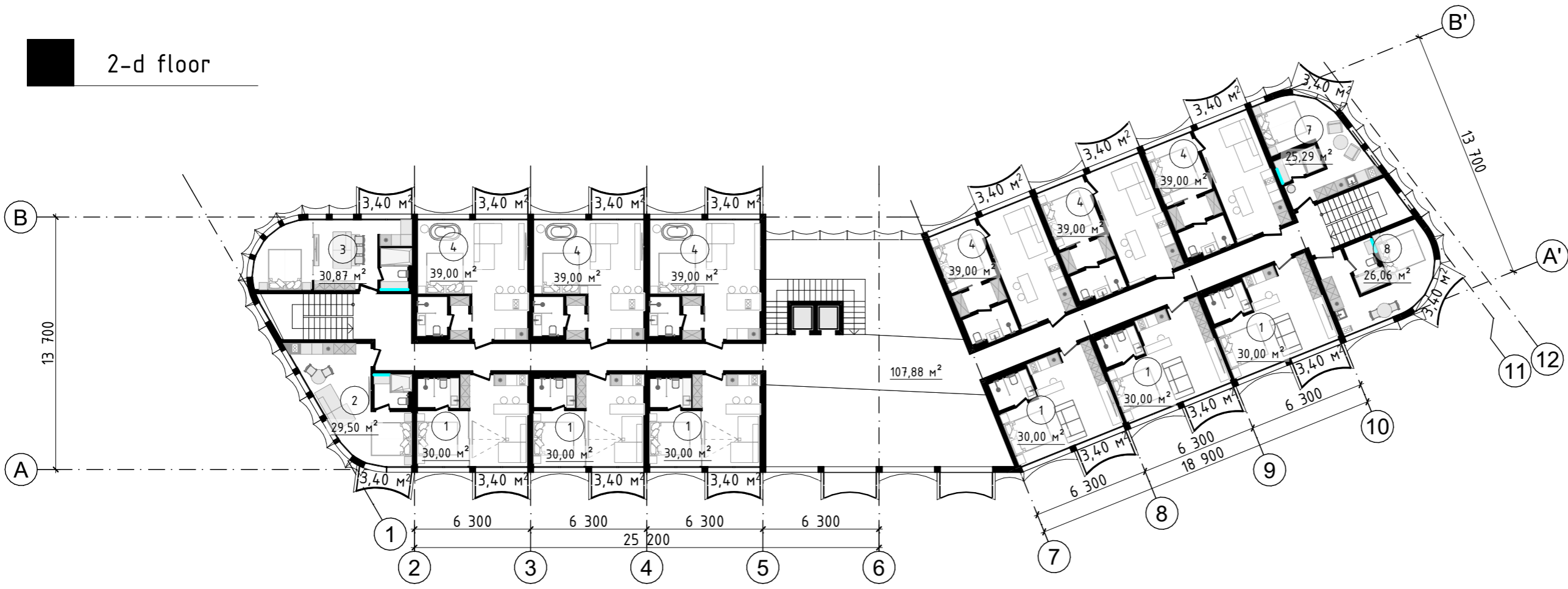
Section



1-st floor



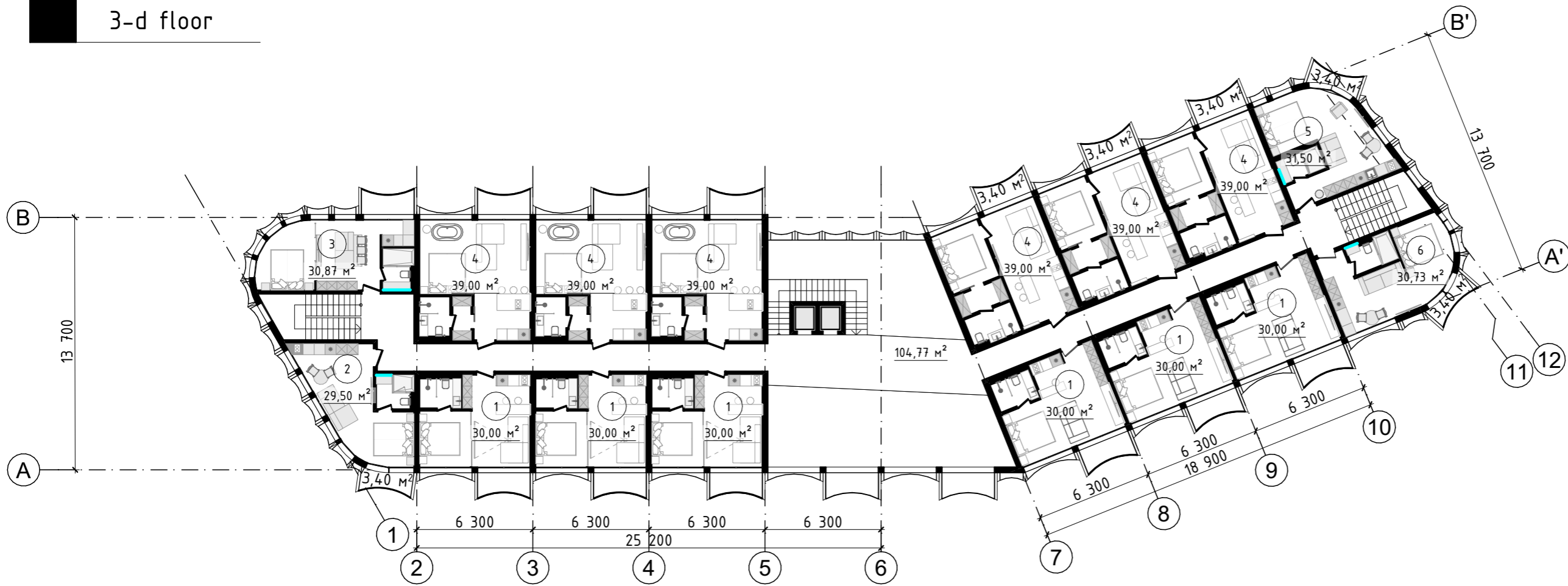
2-d floor



Explication of apartments

Nº	Name	SUM	Area
1	Type 1	24	720,0
2	Type 2	4	118,0
3	Type 3	4	123,5
4	Type 4	24	936,0
5	Type 5	2	63,0
6	Type 6	2	61,5
7	Type 7	2	50,6
8	Type 8	2	52,1
Total		64	2 124,7 m ²

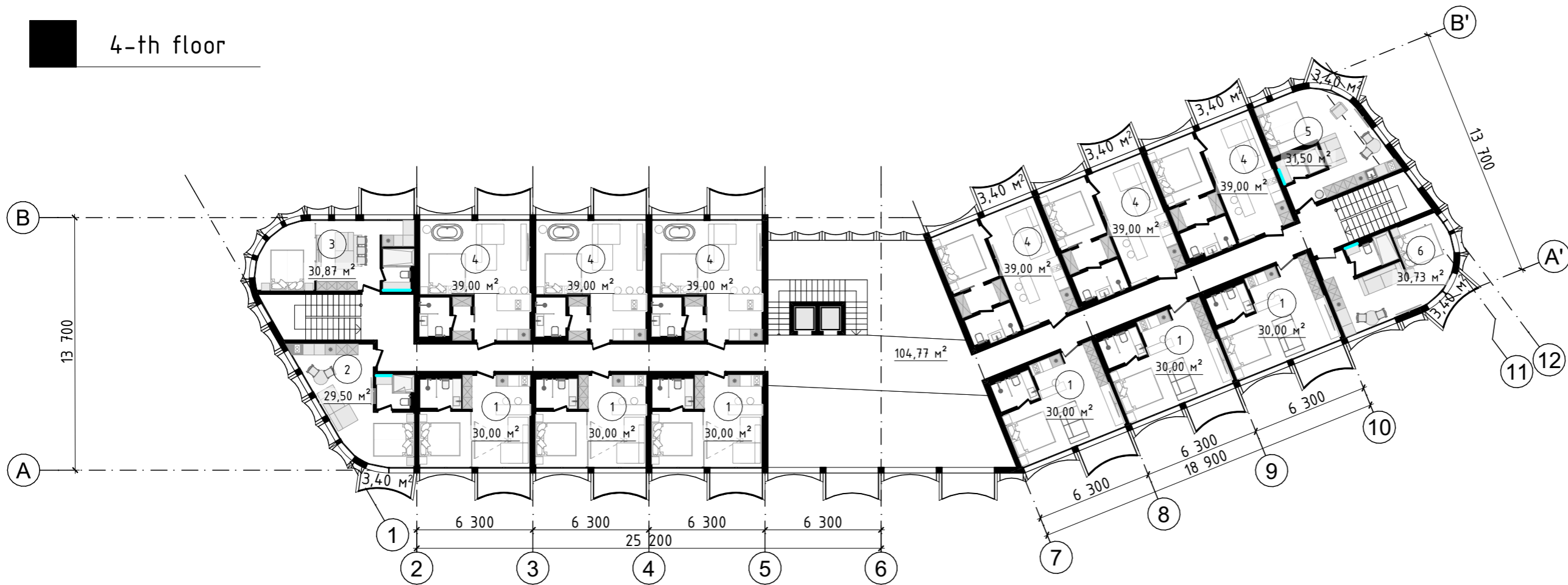
3-d floor

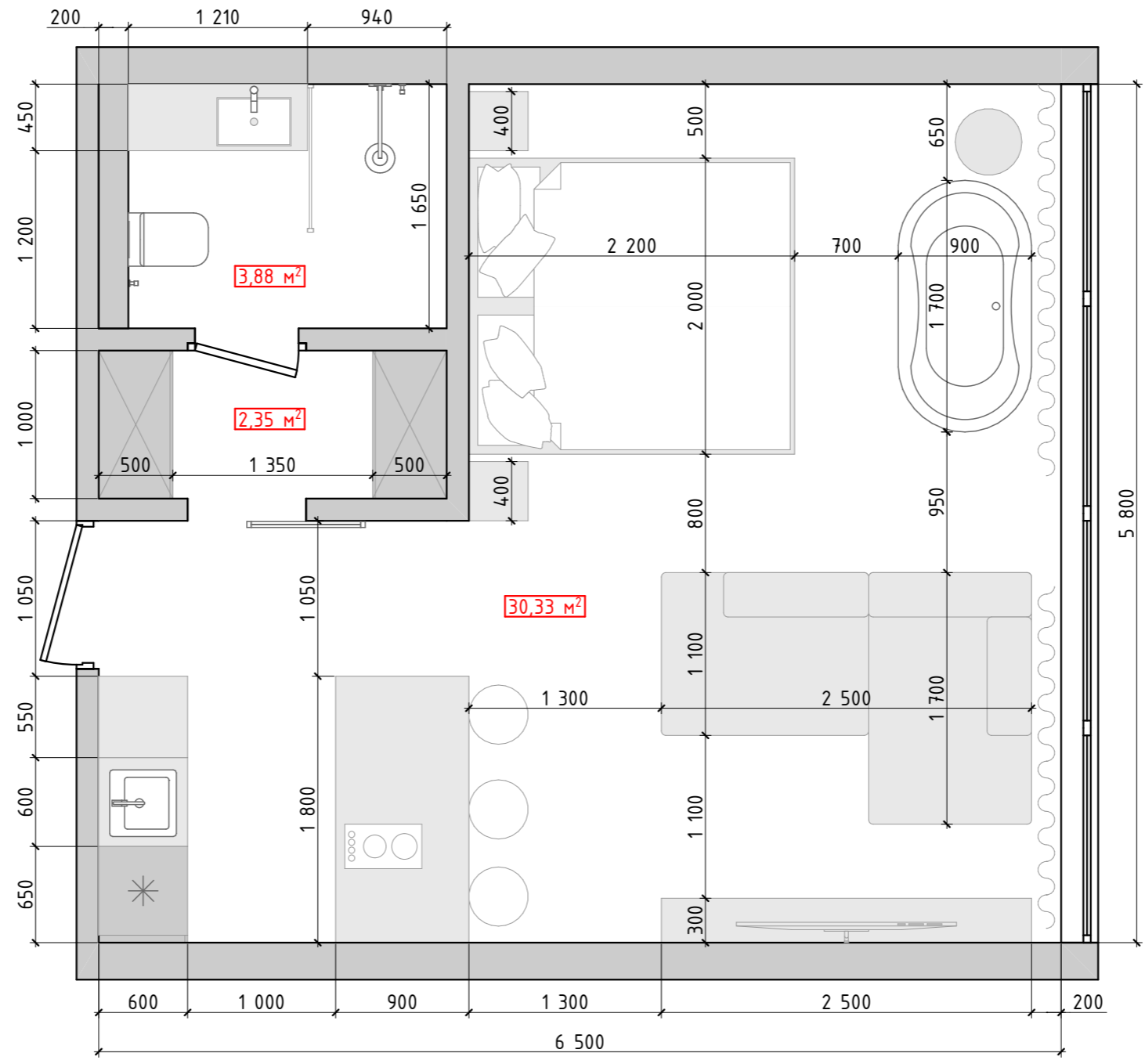


Explication of apartments

N°	Name	SUM	Area
1	Type 1	24	720,0
2	Type 2	4	118,0
3	Type 3	4	123,5
4	Type 4	24	936,0
5	Type 5	2	63,0
6	Type 6	2	61,5
7	Type 7	2	50,6
8	Type 8	2	52,1
Total		64	2 124,7 m ²

4-th floor

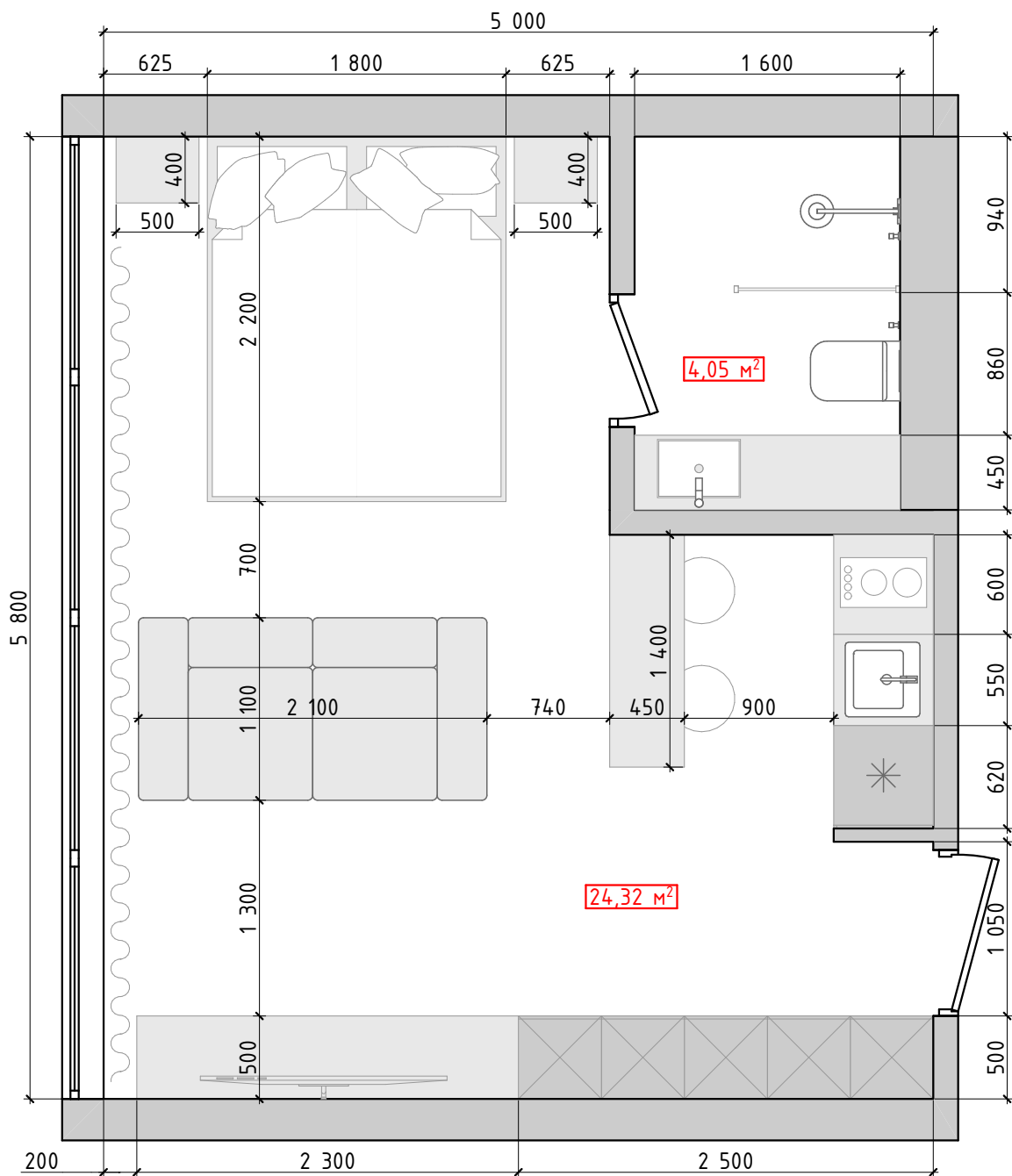




Note:

1. Furniture dimensions are given conditionally showing general size;
2. Purchase furniture after final finishing;
3. Plan of furniture arrangement has developed due to measured dimensions not including smoothing walls, floor and ceiling;
4. Dimensions of rooms after final finishing can vary to a precision of 5cm.
5. Ordered furniture should be installed only after additional measurements conducted by specialists after final finishing.
6. Bathroom fixtures should be installed in accordance with technical schemes of water connection and disposal system.
7. Anticipate built-in items in fastening points for suspended furniture and domestic appliances.

Design project of an apartment	sheet number	total sheets
	1	1
Plan of furniture and equipment arrangement 38 m ² , 1:40		BODES studio

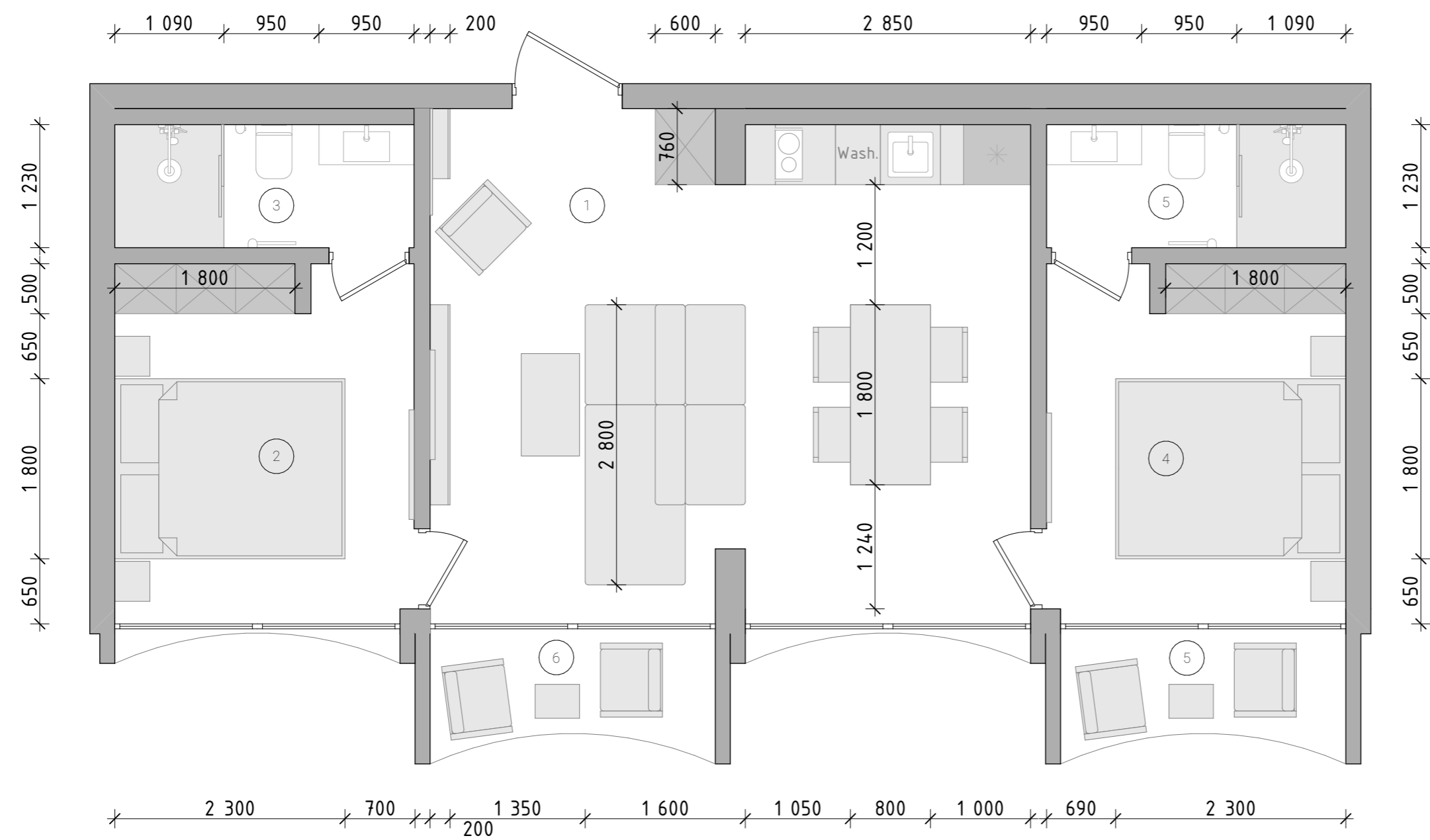


Note:

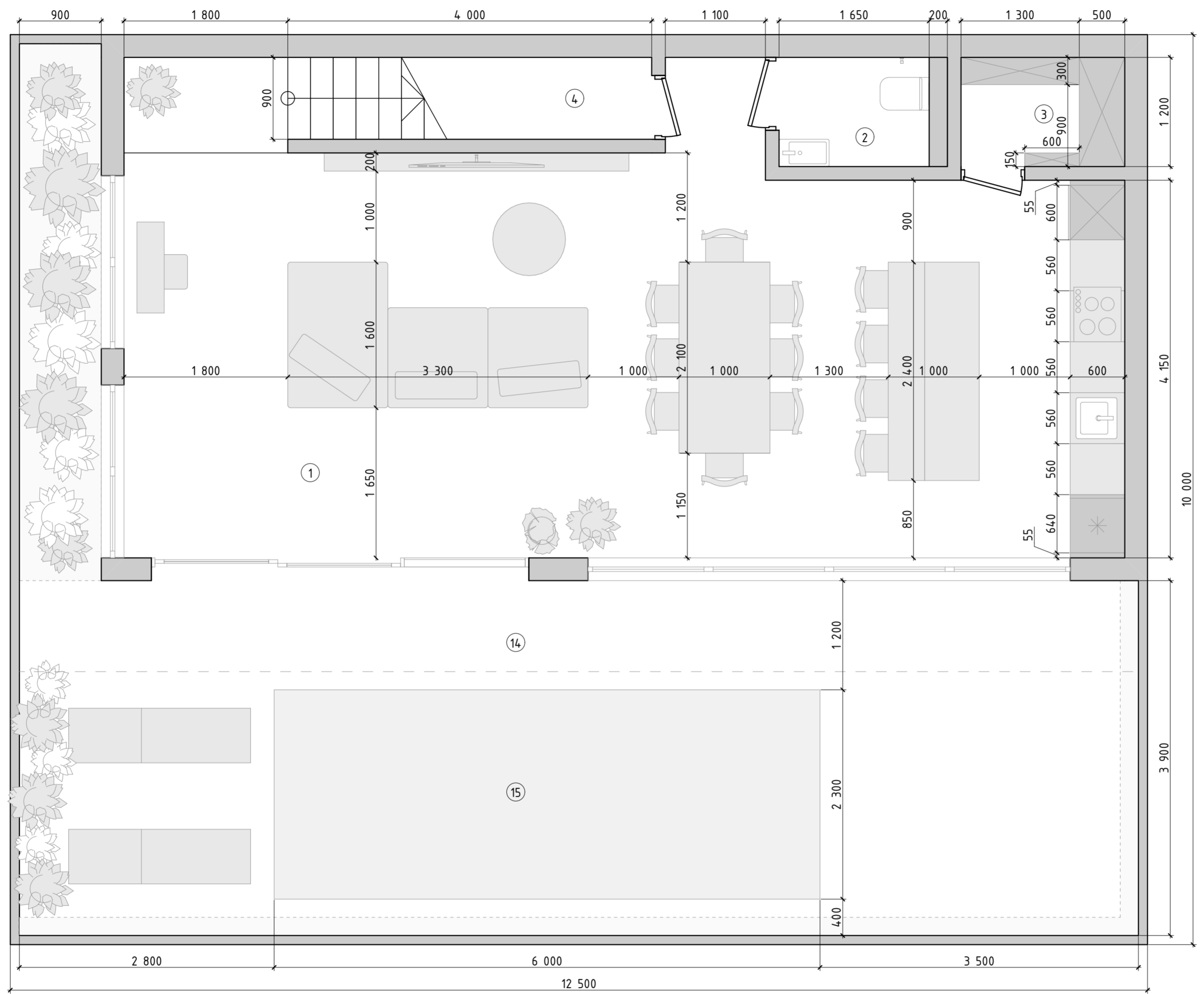
1. Furniture dimensions are given conditionally showing general size;
2. Purchase furniture after final finishing;
3. Plan of furniture arrangement has developed due to measured dimensions not including smoothing walls, floor and ceiling;
- Dimensions of rooms after final finishing can vary to a precision of 5cm.
5. Ordered furniture should be installed only after additional measurements conducted by specialists after final finishing.
6. Bathroom fixtures should be installed in accordance with technical schemes of water connection and disposal system.
7. Anticipate built-in items in fastening points for suspended furniture and domestic appliances.

Design project of an apartment	sheet number	total sheets
	1	1
Plan of furniture and equipment arrangement 30 M2, 1:40		BODES studio

Apartment 2br		
Nº	Name	Area m ²
1	Living	29,14
2	Bedroom	10,24
3	Shower	3,68
4	Bedroom	10,24
5	Balcony	3,12
5	Shower	3,68
6	Balcony	3,12
Area after replaning		63,22 m ²
Area before replaning		60 m ²



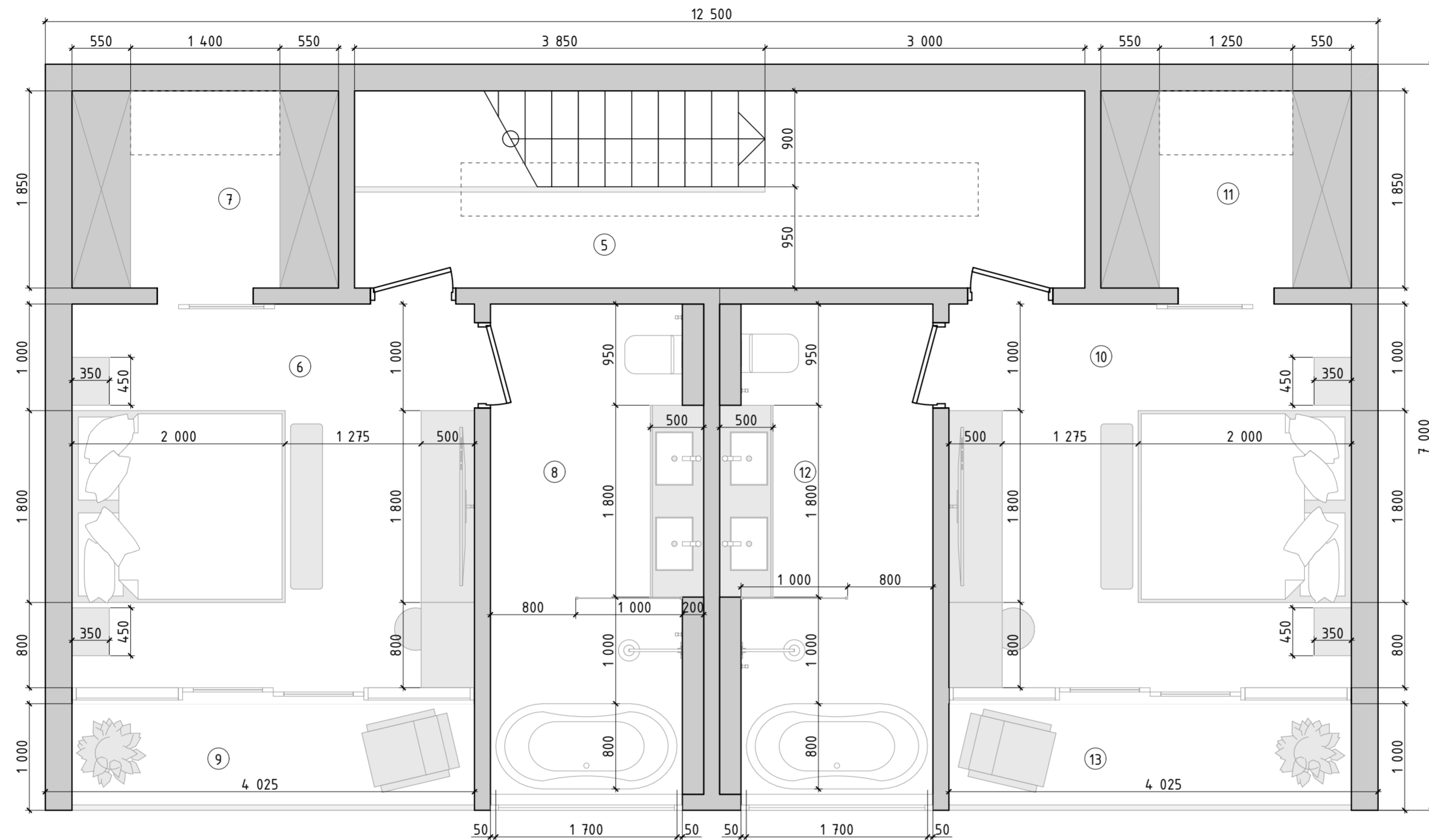
Planing solution	sheet	sheets
	1	1
Plan of furniture and equipment arrangement, 1:50		BODES studio



Explication of premises		
Nº	Name	Area
1	Living room	50,8
2	WC	2,0
3	Pantry	2,2
4	Pantry	3,6
5	Corridor	9,2
6	Bedroom	13,6
7	Dressing room	4,6
8	Bathroom	8,6
9	Balcony	3,8
10	Bedroom	13,6
11	Dressing room	4,3
12	Bathroom	8,6
13	Balcony	3,8
	Total area	128,7 m ²
14	Terasa	40,1
15	Swimming pool	13,8
	Total area	53,9 m ²
	The sum of all areas	182,6 m ²

Note:
 1. Furniture dimensions are given conditionally showing general size;
 2. Purchase furniture after final finishing;
 3. Plan of furniture arrangement has developed due to measured dimensions not including smoothing walls, floor and ceiling;
 Dimensions of rooms after final finishing can vary to a precision of 5cm.
 5. Ordered furniture should be installed only after additional measurements conducted by specialists after final finishing.
 6. Bathroom fixtures should be installed in accordance with technical schemes of water connection and disposal system.
 7. Anticipate built-in items in fastening points for suspended furniture and domestic appliances.

Design project of an apartment 128,7 sq.m.	sheet number	total sheets
	1	3
Plan of furniture and equipment arrangement, 1st floor, 1:40		BODES studio



Explication of premises		
Nº	Name	Area
1	Living room	50,8
2	WC	2,0
3	Pantry	2,2
4	Pantry	3,6
5	Corridor	9,2
6	Bedroom	13,6
7	Dressing room	4,6
8	Bathroom	8,6
9	Balcony	3,8
10	Bedroom	13,6
11	Dressing room	4,3
12	Bathroom	8,6
13	Balcony	3,8
	Total area	128,7 m ²
14	Terasa	40,1
15	Swimming pool	13,8
	Total area	53,9 m ²
	The sum of all areas	182,6 m ²

Note:

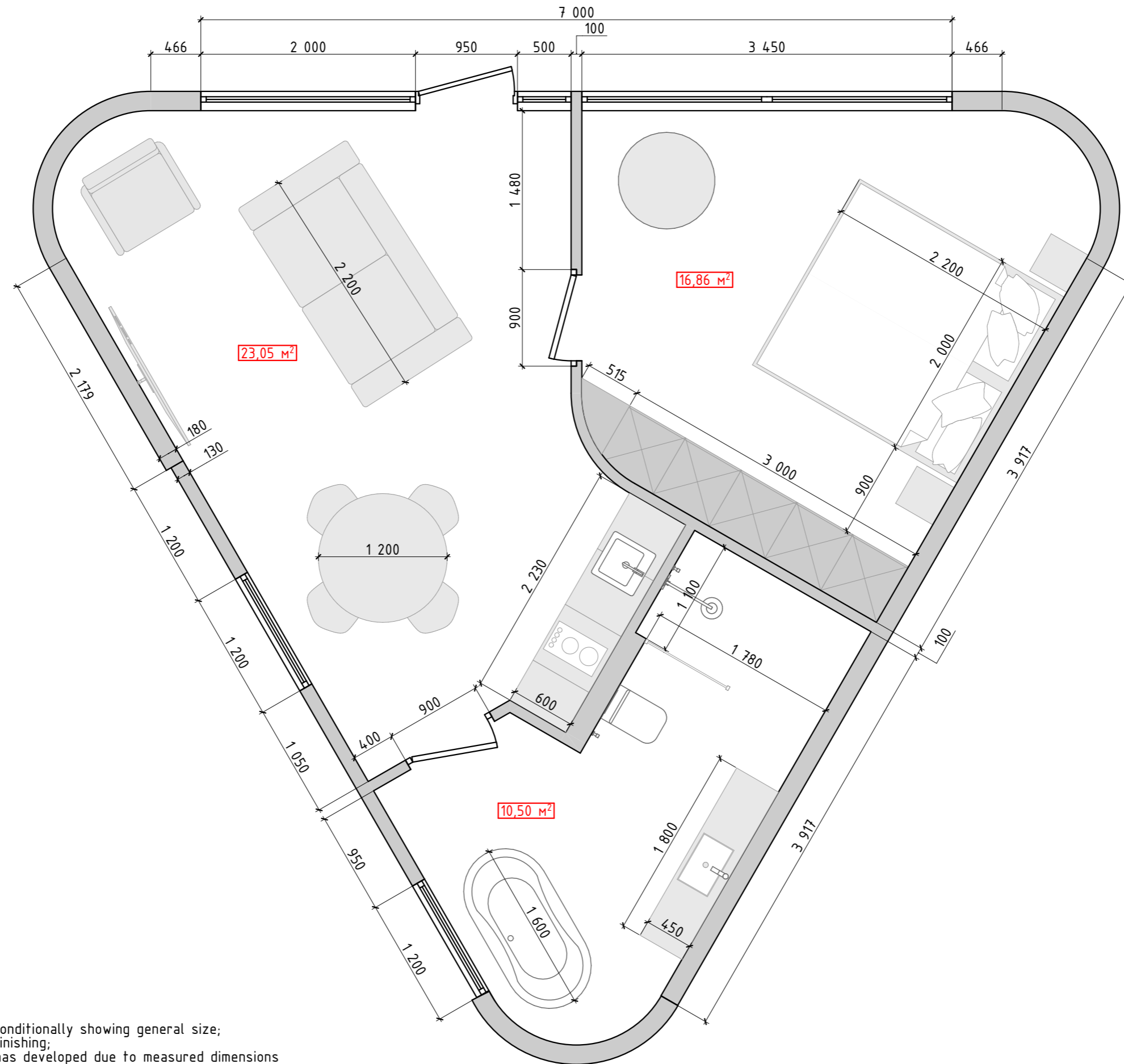
1. Furniture dimensions are given conditionally showing general size;
2. Purchase furniture after final finishing;
3. Plan of furniture arrangement has developed due to measured dimensions not including smoothing walls, floor and ceiling; Dimensions of rooms after final finishing can vary to a precision of 5cm.
5. Ordered furniture should be installed only after additional measurements conducted by specialists after final finishing.
6. Bathroom fixtures should be installed in accordance with technical schemes of water connection and disposal system.
7. Anticipate built-in items in fastening points for suspended furniture and domestic appliances.

Design project of an apartment 128,7 sq.m.	sheet number	total sheets
	2	3
Plan of furniture and equipment arrangement, 2nd floor, 1:40, 1'		BODES studio



Explication of premises		
Nº	Name	Area
1	Living room	53,4
2	WC	3,0
3	Pantry	2,6
5	Corridor	15,5
6	Bathroom	9,2
7	Corridor	21,1
8	Bathroom	9,2
9	Corridor	21,1
10	Bathroom	9,2
Total area		144,2 m ²
11	Terasa	74,8
12	Swimming pool	21,6
Total area		96,4 m ²
The sum of all areas		240,6 m ²

Design project of an apartment 144,2 sq.m.	sheet number	total sheets
	3	3
Plan of furniture and equipment arrangement, 1:40		BODES studio



Note:
 1. Furniture dimensions are given conditionally showing general size;
 2. Purchase furniture after final finishing;
 3. Plan of furniture arrangement has developed due to measured dimensions not including smoothing walls, floor and ceiling;
 Dimensions of rooms after final finishing can vary to a precision of 5cm.
 5. Ordered furniture should be installed only after additional measurements conducted by specialists after final finishing.
 6. Bathroom fixtures should be installed in accordance with technical schemes of water connection and disposal system.
 7. Anticipate built-in items in fastening points for suspended furniture and domestic appliances.

Design project of an apartment	sheet number	total sheets
	1	1
Plan of furniture and equipment arrangement 50,40 m2,		BODES studio