

# Floor Plates

**LEGEND**

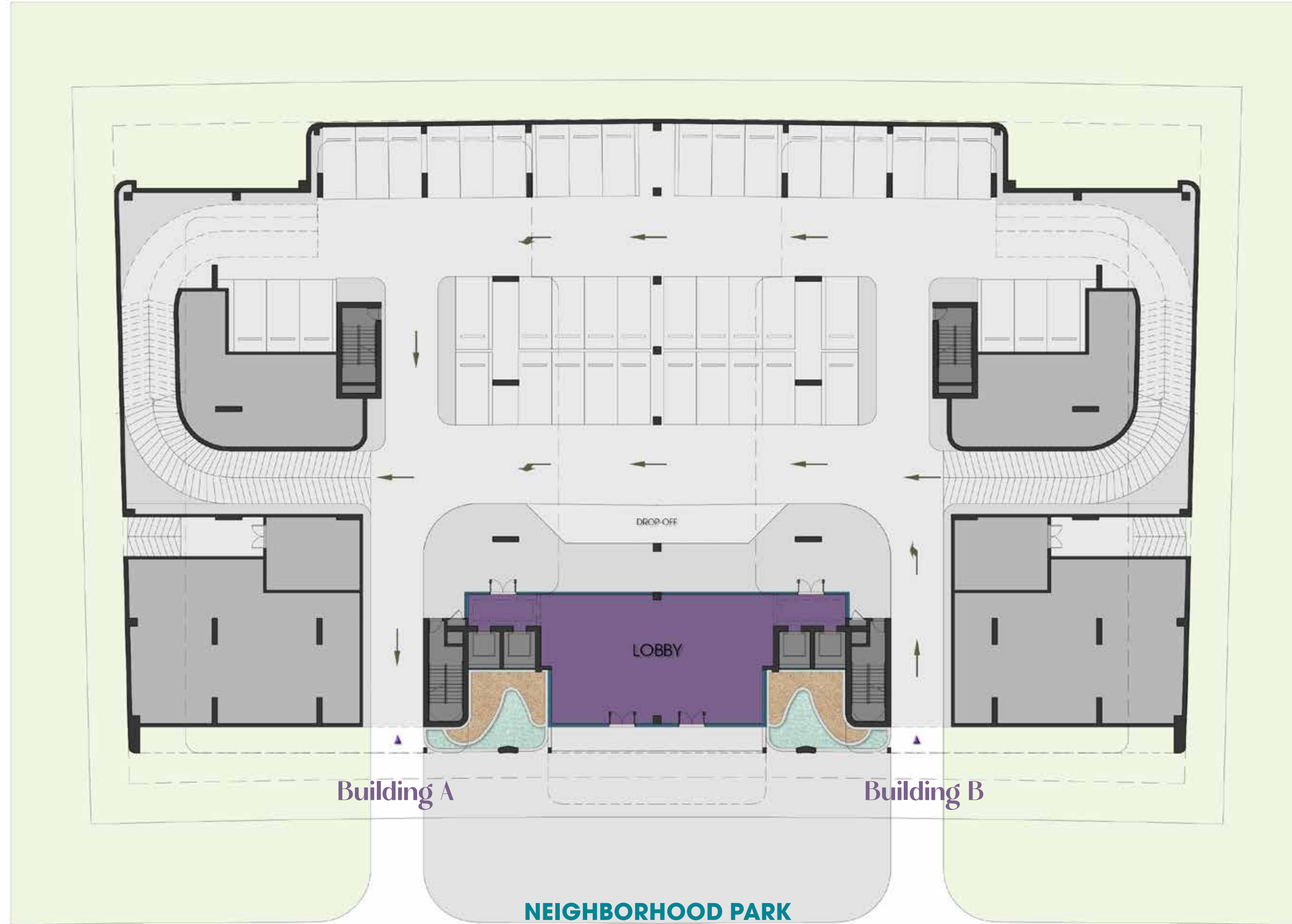
- 1 BEDROOM APARTMENT
- 2 BEDROOM APARTMENT
- 3 BEDROOM APARTMENT
- 4 BEDROOM PENTHOUSE
- TERRACES

- LOBBY
- AMENITIES
- CORRIDORS
- LIFTS & STAIRS
- SERVICES

BEACH / MALL



NEIGHBOR



NEIGHBOR

# KAiA

RESIDENCES

## Ground Floor Plan

PLOT AREA	4,897 M <sup>2</sup> - 52,710 FT <sup>2</sup>
GFA	15,327 M <sup>2</sup> - 164,978 FT <sup>2</sup>
BUILDING HEIGHT	G + 2P + 8 + R
SETBACKS	3M FROM ALL SIDES FRONT & REAR 5M SIDES 7.5M

**LEGEND**

- 1 BEDROOM APARTMENT
- 2 BEDROOM APARTMENT
- 3 BEDROOM APARTMENT
- 4 BEDROOM PENTHOUSE
- TERRACES

- LOBBY
- AMENITIES
- CORRIDORS
- LIFTS & STAIRS
- SERVICES

BEACH / MALL



NEIGHBOR

NEIGHBOR

NEIGHBORHOOD PARK

# KAIYA

RESIDENCES

## Podium 1 Floor Plan

PLOT AREA 4,897 M<sup>2</sup> - 52,710 FT<sup>2</sup>  
GFA 15,327 M<sup>2</sup> - 164,978 FT<sup>2</sup>  
BUILDING HEIGHT G + 2P + 8 + R

SETBACKS 3M FROM ALL SIDES  
FRONT & REAR 5M  
SIDES 7.5M

**LEGEND**

- 1 BEDROOM APARTMENT
- 2 BEDROOM APARTMENT
- 3 BEDROOM APARTMENT
- 4 BEDROOM PENTHOUSE
- TERRACES

- LOBBY
- AMENITIES
- CORRIDORS
- LIFTS & STAIRS
- SERVICES

BEACH / MALL



NEIGHBOR

NEIGHBOR

NEIGHBORHOOD PARK

# KAIYA

RESIDENCES

## Podium 2 Floor Plan

PLOT AREA 4,897 M<sup>2</sup> - 52,710 FT<sup>2</sup>  
GFA 15,327 M<sup>2</sup> - 164,978 FT<sup>2</sup>  
BUILDING HEIGHT G + 2P + 8 + R

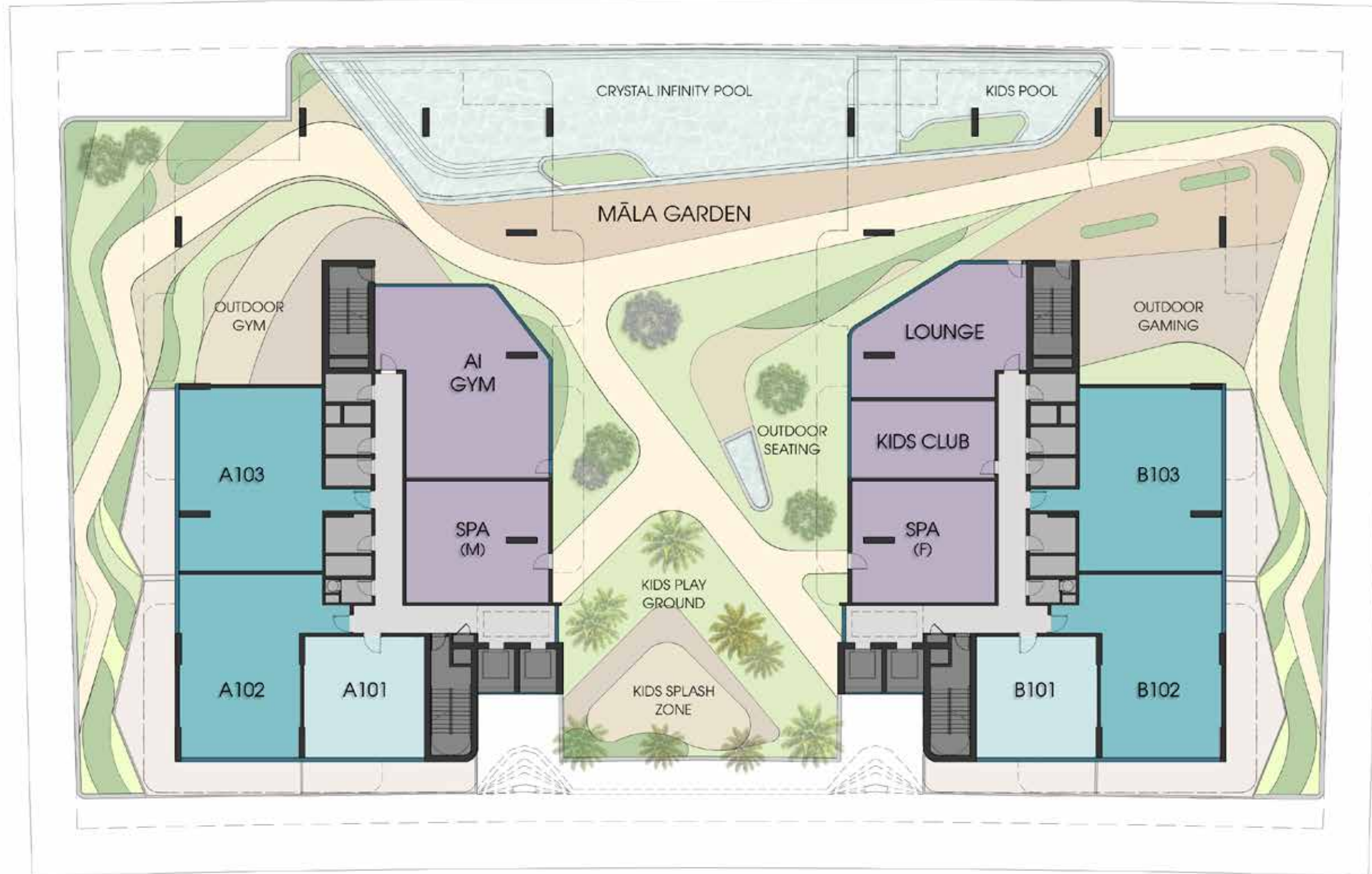
SETBACKS 3M FROM ALL SIDES  
FRONT & REAR 5M  
SIDES 7.5M

**LEGEND**

- 1 BEDROOM APARTMENT
- 2 BEDROOM APARTMENT
- 3 BEDROOM APARTMENT
- 4 BEDROOM PENTHOUSE
- TERRACES

- LOBBY
- AMENITIES
- CORRIDORS
- LIFTS & STAIRS
- SERVICES

▲  
**BEACH / MALL**



▼  
**NEIGHBORHOOD PARK**

# KAIIA

RESIDENCES

## First Floor Plan

PLOT AREA	4,897 M <sup>2</sup> - 52,710 FT <sup>2</sup>
GFA	15,327 M <sup>2</sup> - 164,978 FT <sup>2</sup>
BUILDING HEIGHT	G + 2P + 8 + R
SETBACKS	
	3M FROM ALL SIDES FRONT & REAR 5M SIDES 7.5M

**LEGEND**

- 1 BEDROOM APARTMENT
- 2 BEDROOM APARTMENT
- 3 BEDROOM APARTMENT
- 4 BEDROOM PENTHOUSE
- TERRACES

- LOBBY
- AMENITIES
- CORRIDORS
- LIFTS & STAIRS
- SERVICES

▲  
**BEACH / MALL**



**NEIGHBORHOOD PARK**  
▼

**NEIGHBOR** ←

**NEIGHBOR** →

# KaiiA

RESIDENCES

## Second Floor Plan

PLOT AREA	4,897 M <sup>2</sup> - 52,710 FT <sup>2</sup>
GFA	15,327 M <sup>2</sup> - 164,978 FT <sup>2</sup>
BUILDING HEIGHT	G + 2P + 8 + R

SETBACKS	3M FROM ALL SIDES
	FRONT & REAR 5M
	SIDES 7.5M

**LEGEND**

- 1 BEDROOM APARTMENT
- 2 BEDROOM APARTMENT
- 3 BEDROOM APARTMENT
- 4 BEDROOM PENTHOUSE
- TERRACES

- LOBBY
- AMENITIES
- CORRIDORS
- LIFTS & STAIRS
- SERVICES

BEACH / MALL



NEIGHBOR

NEIGHBOR

NEIGHBORHOOD PARK

# KAIYA

RESIDENCES

## Third Floor Plan

PLOT AREA	4,897 M <sup>2</sup> - 52,710 FT <sup>2</sup>
GFA	15,327 M <sup>2</sup> - 164,978 FT <sup>2</sup>
BUILDING HEIGHT	G + 2P + 8 + R

SETBACKS	3M FROM ALL SIDES FRONT & REAR 5M SIDES 7.5M
----------	--

**LEGEND**

- 1 BEDROOM APARTMENT
- 2 BEDROOM APARTMENT
- 3 BEDROOM APARTMENT
- 4 BEDROOM PENTHOUSE
- TERRACES

- LOBBY
- AMENITIES
- CORRIDORS
- LIFTS & STAIRS
- SERVICES

▲  
**BEACH / MALL**



**NEIGHBORHOOD PARK**  
▼

# KaiiA

RESIDENCES

## Fourth Floor Plan

PLOT AREA	4,897 M <sup>2</sup> - 52,710 FT <sup>2</sup>
GFA	15,327 M <sup>2</sup> - 164,978 FT <sup>2</sup>
BUILDING HEIGHT	G + 2P + 8 + R

SETBACKS	3M FROM ALL SIDES
	FRONT & REAR 5M
	SIDES 7.5M

**LEGEND**

- 1 BEDROOM APARTMENT
- 2 BEDROOM APARTMENT
- 3 BEDROOM APARTMENT
- 4 BEDROOM PENTHOUSE
- TERRACES

- LOBBY
- AMENITIES
- CORRIDORS
- LIFTS & STAIRS
- SERVICES

▲  
**BEACH / MALL**



**NEIGHBORHOOD PARK**  
▼

**NEIGHBOR** ▶

# KaiiA

RESIDENCES

## Fifth Floor Plan

PLOT AREA	4,897 M <sup>2</sup> - 52,710 FT <sup>2</sup>
GFA	15,327 M <sup>2</sup> - 164,978 FT <sup>2</sup>
BUILDING HEIGHT	G + 2P + 8 + R

SETBACKS	3M FROM ALL SIDES
	FRONT & REAR 5M
	SIDES 7.5M

**LEGEND**

- 1 BEDROOM APARTMENT
- 2 BEDROOM APARTMENT
- 3 BEDROOM APARTMENT
- 4 BEDROOM PENTHOUSE
- TERRACES

- LOBBY
- AMENITIES
- CORRIDORS
- LIFTS & STAIRS
- SERVICES

▲  
**BEACH / MALL**



**NEIGHBORHOOD PARK**  
▼

**NEIGHBOR** ←

**NEIGHBOR** →

# KAiA

RESIDENCES

## Sixth Floor Plan

PLOT AREA	4,897 M <sup>2</sup> - 52,710 FT <sup>2</sup>
GFA	15,327 M <sup>2</sup> - 164,978 FT <sup>2</sup>
BUILDING HEIGHT	G + 2P + 8 + R

SETBACKS	3M FROM ALL SIDES
	FRONT & REAR 5M
	SIDES 7.5M

**LEGEND**

- 1 BEDROOM APARTMENT
- 2 BEDROOM APARTMENT
- 3 BEDROOM APARTMENT
- 4 BEDROOM PENTHOUSE
- TERRACES

- LOBBY
- AMENITIES
- CORRIDORS
- LIFTS & STAIRS
- SERVICES

▲  
**BEACH / MALL**



**NEIGHBORHOOD PARK**  
▼

# KaiiA

RESIDENCES

## Seventh Floor Plan

PLOT AREA	4,897 M <sup>2</sup> - 52,710 FT <sup>2</sup>
GFA	15,327 M <sup>2</sup> - 164,978 FT <sup>2</sup>
BUILDING HEIGHT	G + 2P + 8 + R

SETBACKS	3M FROM ALL SIDES
	FRONT & REAR 5M
	SIDES 7.5M

**LEGEND**

- 1 BEDROOM APARTMENT
- 2 BEDROOM APARTMENT
- 3 BEDROOM APARTMENT
- 4 BEDROOM PENTHOUSE
- TERRACES

- LOBBY
- AMENITIES
- CORRIDORS
- LIFTS & STAIRS
- SERVICES

▲  
**BEACH / MALL**



**NEIGHBORHOOD PARK**  
▼

**NEIGHBOR** ▶

# KaiiA

RESIDENCES

## Eighth Floor Plan

PLOT AREA	4,897 M <sup>2</sup> - 52,710 FT <sup>2</sup>
GFA	15,327 M <sup>2</sup> - 164,978 FT <sup>2</sup>
BUILDING HEIGHT	G + 2P + 8 + R

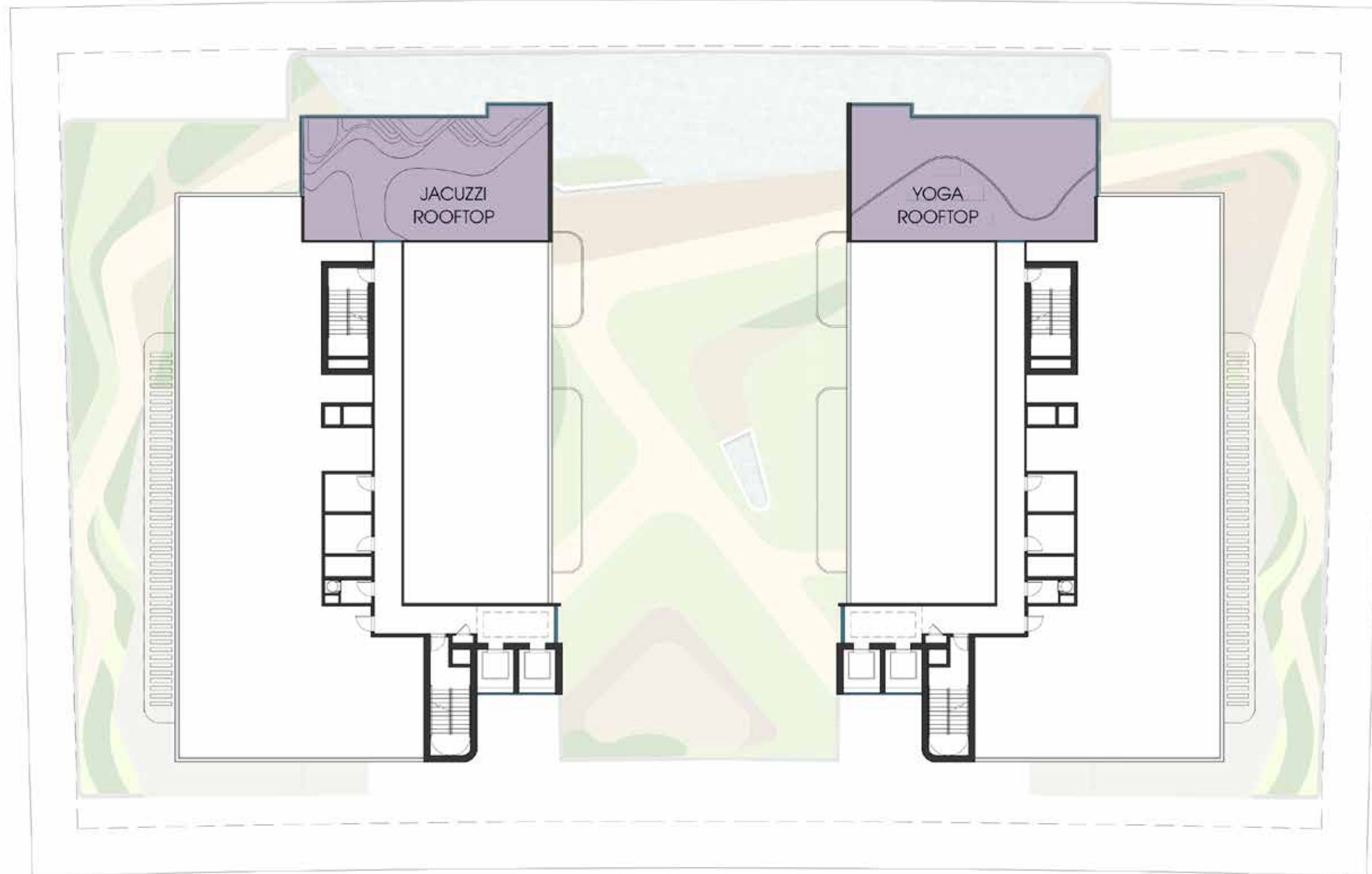
SETBACKS	3M FROM ALL SIDES
	FRONT & REAR 5M
	SIDES 7.5M

**LEGEND**

- 1 BEDROOM APARTMENT
- 2 BEDROOM APARTMENT
- 3 BEDROOM APARTMENT
- 4 BEDROOM PENTHOUSE
- TERRACES

- LOBBY
- AMENITIES
- CORRIDORS
- LIFTS & STAIRS
- SERVICES

BEACH / MALL



NEIGHBOR

NEIGHBOR

NEIGHBORHOOD PARK

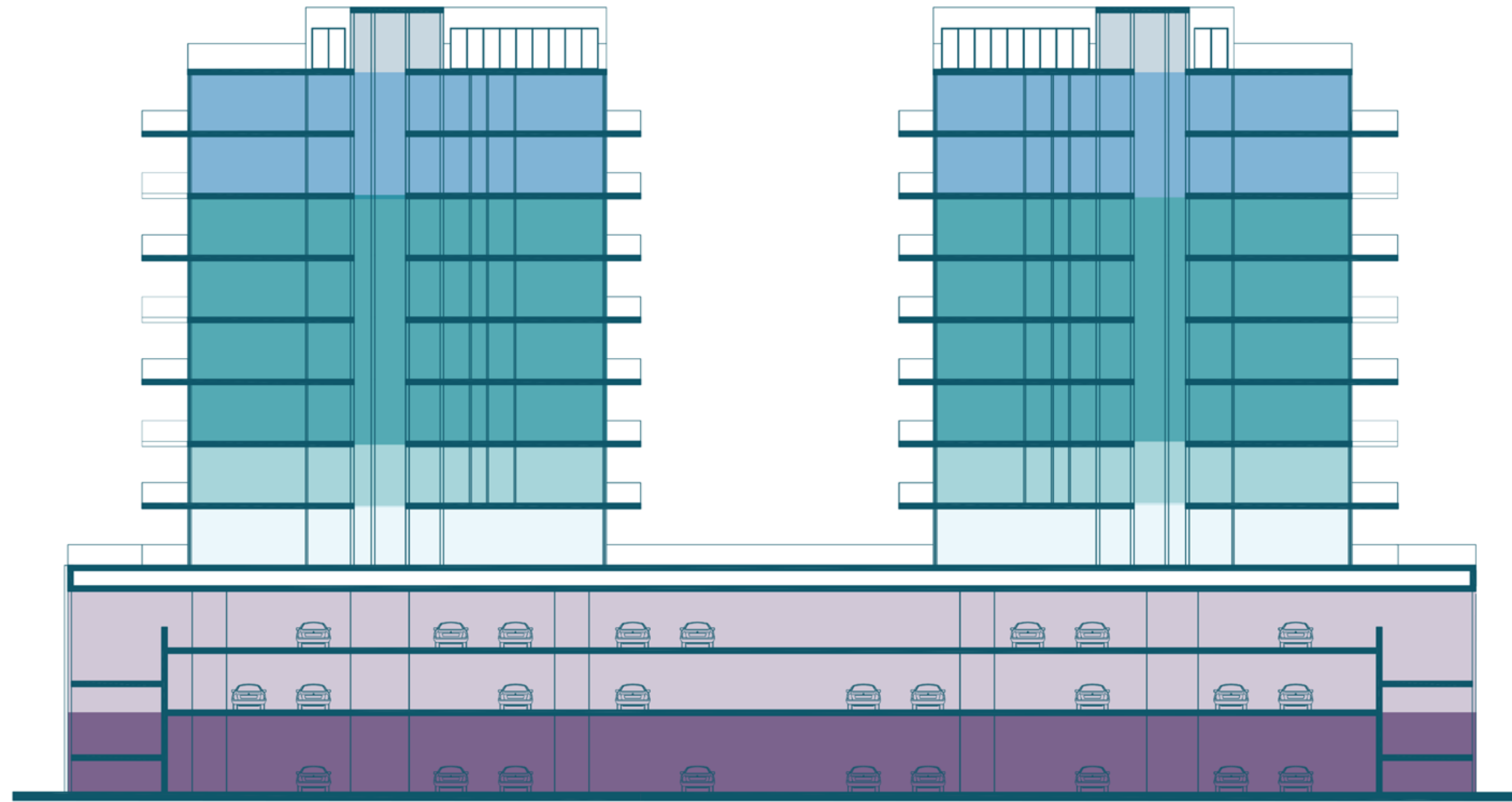
# KAIYA

RESIDENCES

## Roof Floor Plan

PLOT AREA	4,897 M <sup>2</sup> - 52,710 FT <sup>2</sup>
GFA	15,327 M <sup>2</sup> - 164,978 FT <sup>2</sup>
BUILDING HEIGHT	G + 2P + 8 + R
SETBACKS	3M FROM ALL SIDES FRONT & REAR 5M SIDES 7.5M

# Unit Mix



- ROOF FLOOR PLAN  
ROOFTOP AMENITIES
- SEVENTH & EIGHTH FLOOR PLANS  
1BHK & 2BHK APARTMENTS  
4BHK DUPLEXS
- THIRD TO SIXTH FLOOR PLANS  
TYPICAL FLOORS  
1BHK, 2BHK & 3BHK APARTMENTS
- SECOND FLOOR PLAN  
1BHK & 2BHK APARTMENTS
- FIRST FLOOR PLAN  
1BHK & 2BHK APARTMENTS AND MALA GARDEN
- PODIUM FLOOR PLANS  
1BHK APARTMENTS AND PARKING FLOORS
- GROUND FLOOR PLAN  
LOBBY AND MAIN PARKING ENTRANCES

APARTMENT TYPE	1BHK + STUDY	2BHK + STUDY	2BHK + MAID	3BHK + MAID	4BHK DUPLEX
NUMBER OF UNITS	68	16	34	8	2
SIZE RANGE	792 - 992 FT2	1,336 - 1,784 FT2	1,367 - 1,616 FT2	1,624 - 1,748 FT2	3,173 FT2

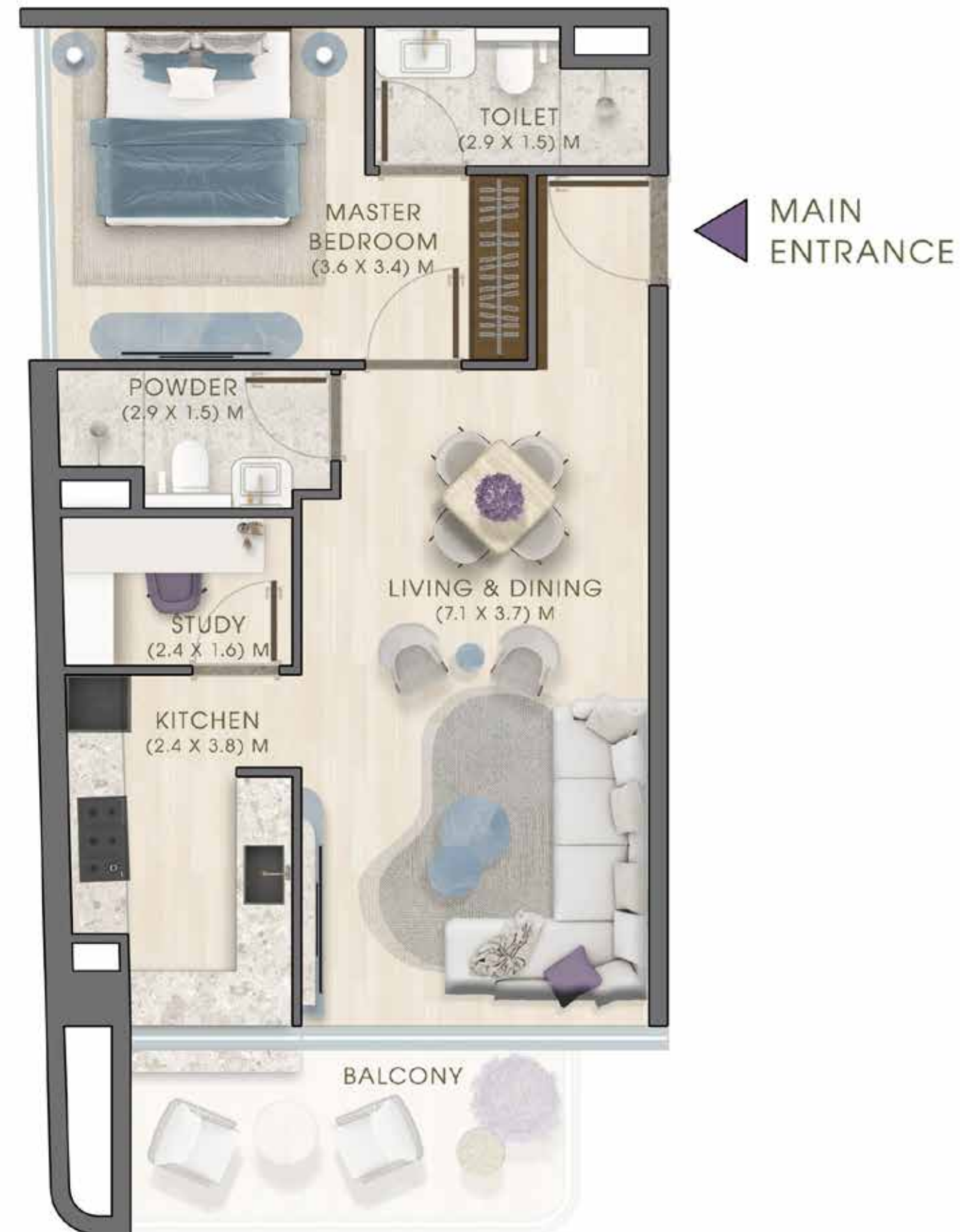
**TOTAL : 128 UNITS**

# Unit Plans

# KAIA

R E S I D E N C E S

## 1 BHK - Type 1



FLOOR AVAILABILITY: P1 + P2  
 BUILDING AVAILABILITY: A + B  
 NUMBER OF UNITS: 4

SUITE AREA 764 FT<sup>2</sup>  
 BALCONY 98 - 103 FT<sup>2</sup>  
 TOTAL AREA 862 - 867 FT<sup>2</sup>



# KAIA

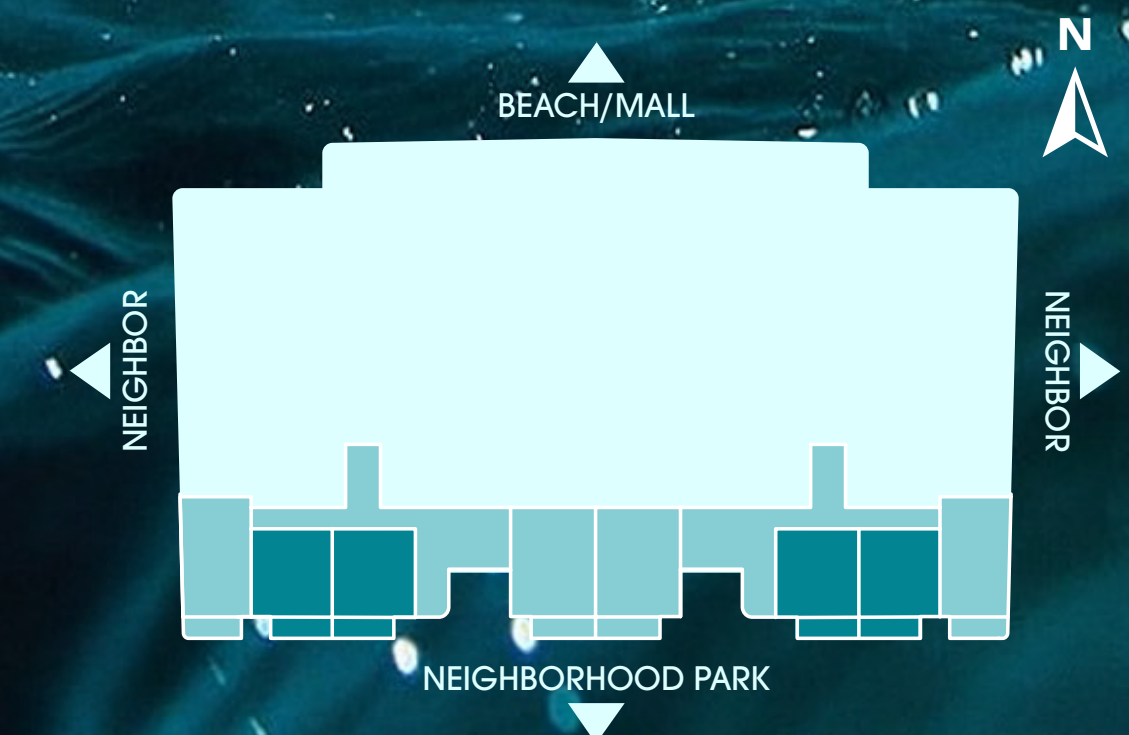
R E S I D E N C E S

## 1 BHK - Type 2



FLOOR AVAILABILITY:	ALL FLOORS
BUILDING AVAILABILITY:	A + B
NUMBER OF UNITS:	24

SUITE AREA	678 FT <sup>2</sup>
BALCONY	108 - 261 FT <sup>2</sup>
TOTAL AREA	786 - 939 FT <sup>2</sup>



# KAIA

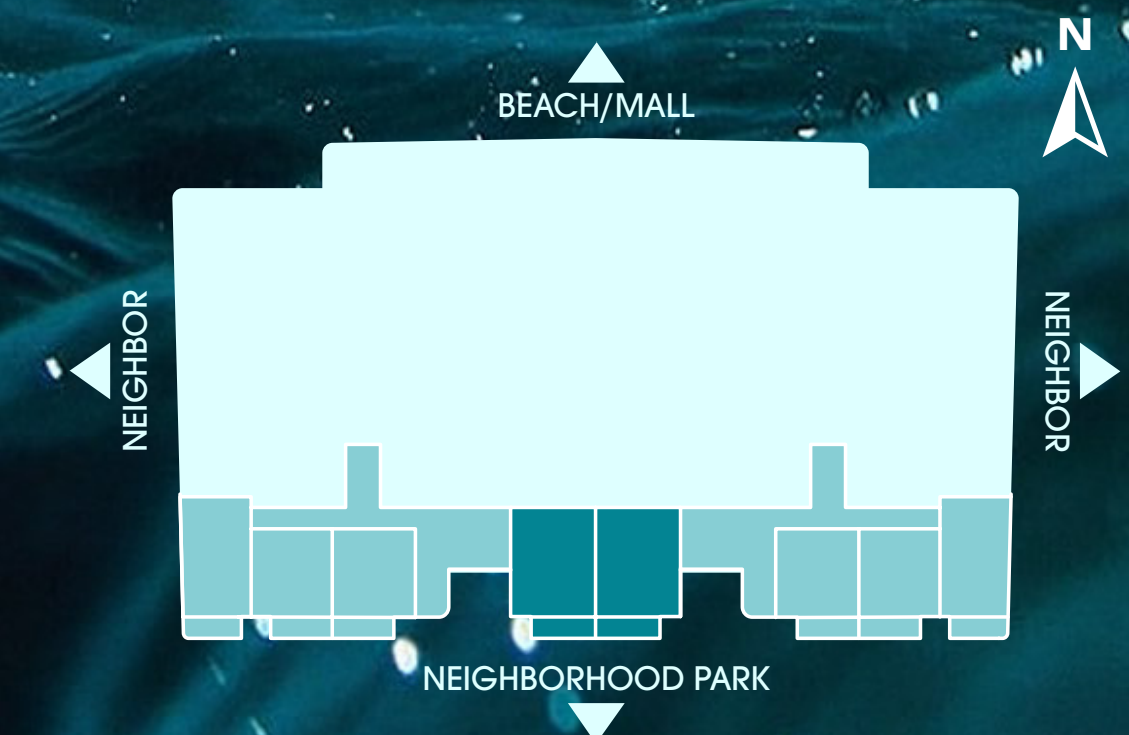
R E S I D E N C E S

## 1 BHK - Type 3



FLOOR AVAILABILITY: P1 + P2  
 BUILDING AVAILABILITY: A + B  
 NUMBER OF UNITS: 4

SUITE AREA 850 FT<sup>2</sup>  
 BALCONY 128 - 133 FT<sup>2</sup>  
 TOTAL AREA 978 - 983 FT<sup>2</sup>



# KAIA

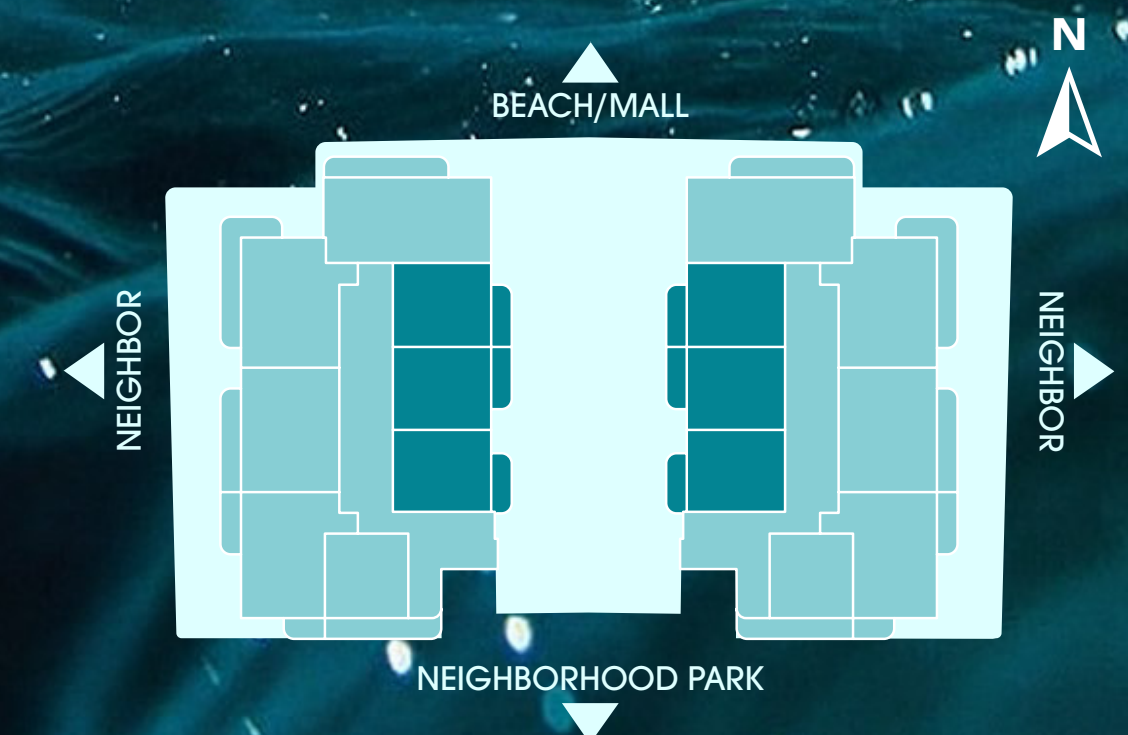
R E S I D E N C E S

## 1 BHK - Type 4



FLOOR AVAILABILITY:	2ND TO 7TH
BUILDING AVAILABILITY:	A + B
NUMBER OF UNITS:	36

SUITE AREA	796 FT <sup>2</sup>
BALCONY	117 - 126 FT <sup>2</sup>
<b>TOTAL AREA</b>	<b>913 - 922 FT<sup>2</sup></b>



# KAIA

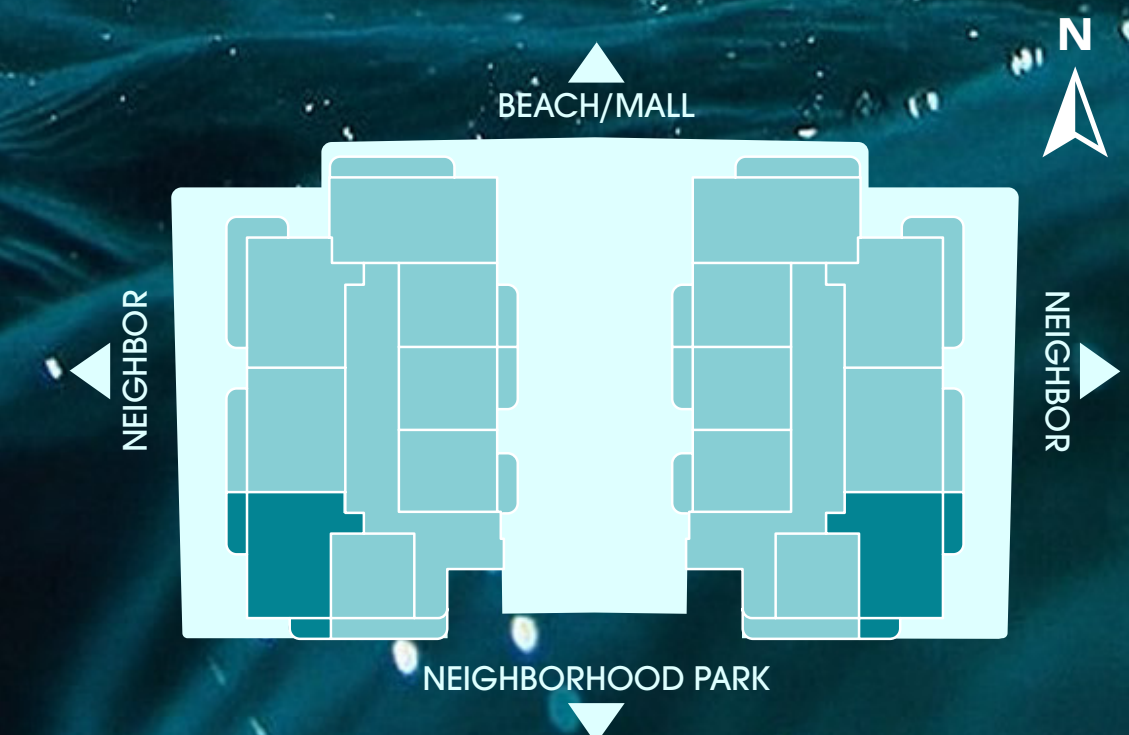
R E S I D E N C E S

## 2 BHK - Type 1



FLOOR AVAILABILITY: 1ST TO 8TH  
 BUILDING AVAILABILITY: A + B  
 NUMBER OF UNITS: 16

SUITE AREA 1,130 FT<sup>2</sup>  
 BALCONY 208 - 655 FT<sup>2</sup>  
 TOTAL AREA 1,338 - 1,785 FT<sup>2</sup>



# KAIA

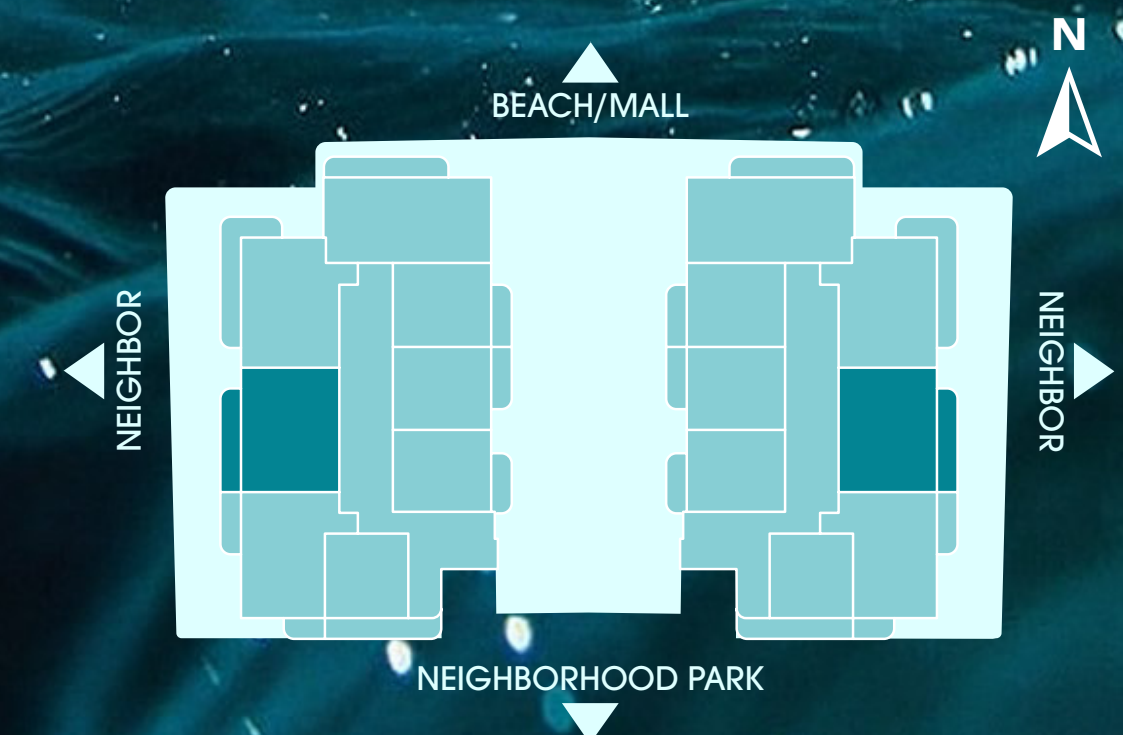
R E S I D E N C E S

## 2 BHK - Type 2



FLOOR AVAILABILITY: 1ST TO 8TH  
 BUILDING AVAILABILITY: A + B  
 NUMBER OF UNITS: 16

SUITE AREA 1,259 FT<sup>2</sup>  
 BALCONY 126 - 358 FT<sup>2</sup>  
 TOTAL AREA 1,385 - 1,617 FT<sup>2</sup>



# KAIYA

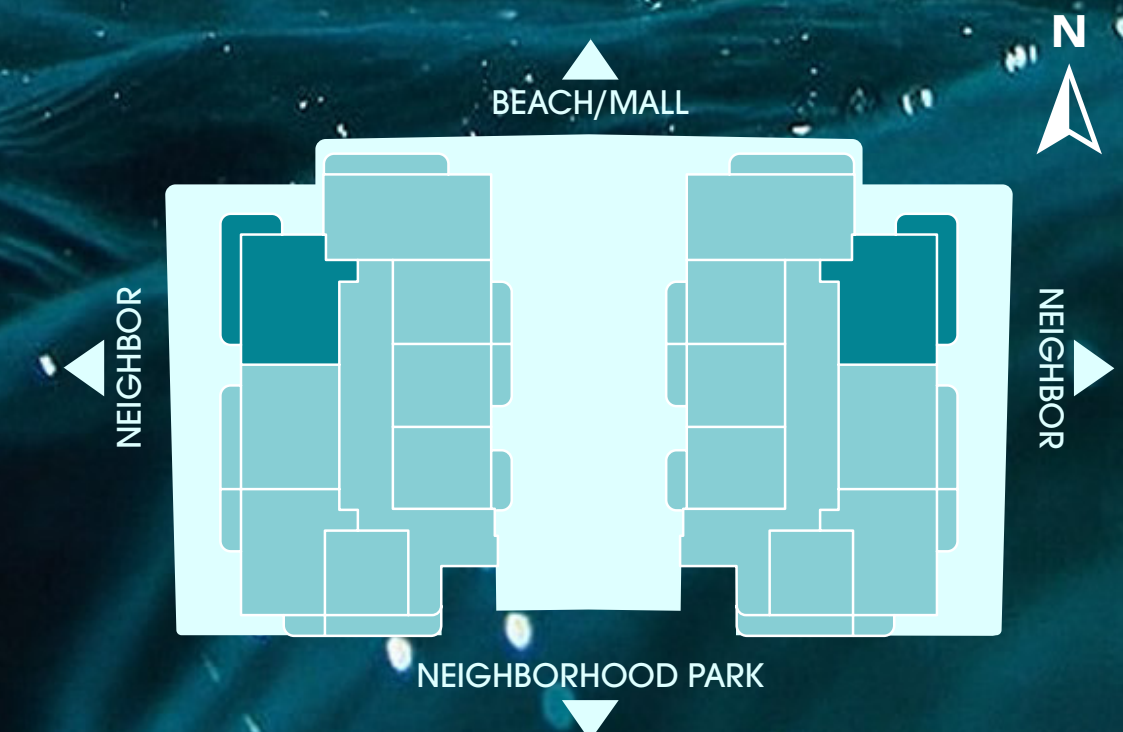
R E S I D E N C E S

## 2 BHK - Type 3



FLOOR AVAILABILITY: 2ND TO 8TH  
 BUILDING AVAILABILITY: A + B  
 NUMBER OF UNITS: 14

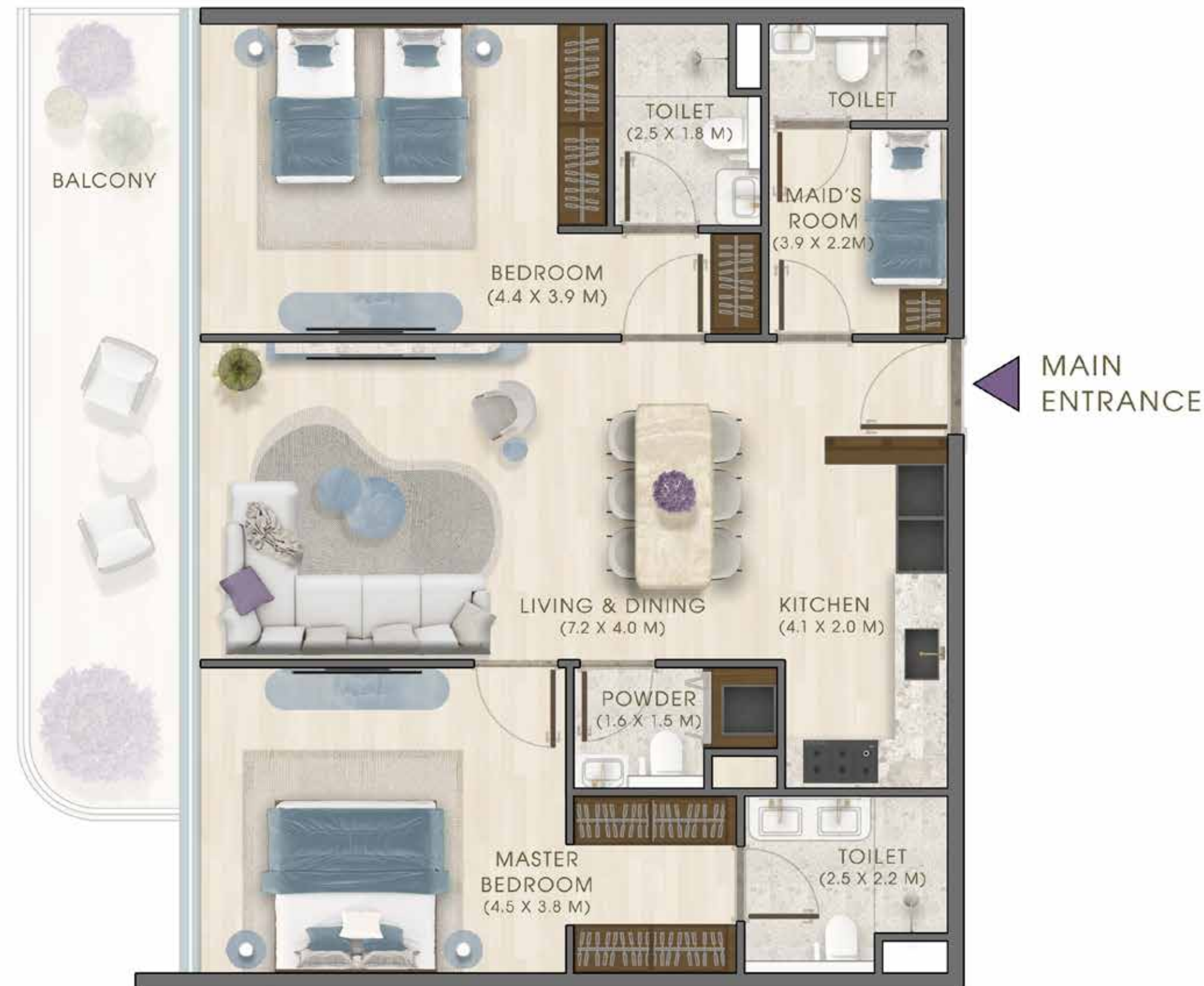
SUITE AREA 1,249 FT<sup>2</sup>  
 BALCONY 296 - 345 FT<sup>2</sup>  
 TOTAL AREA 1,545 - 1,594 FT<sup>2</sup>



# KAIA

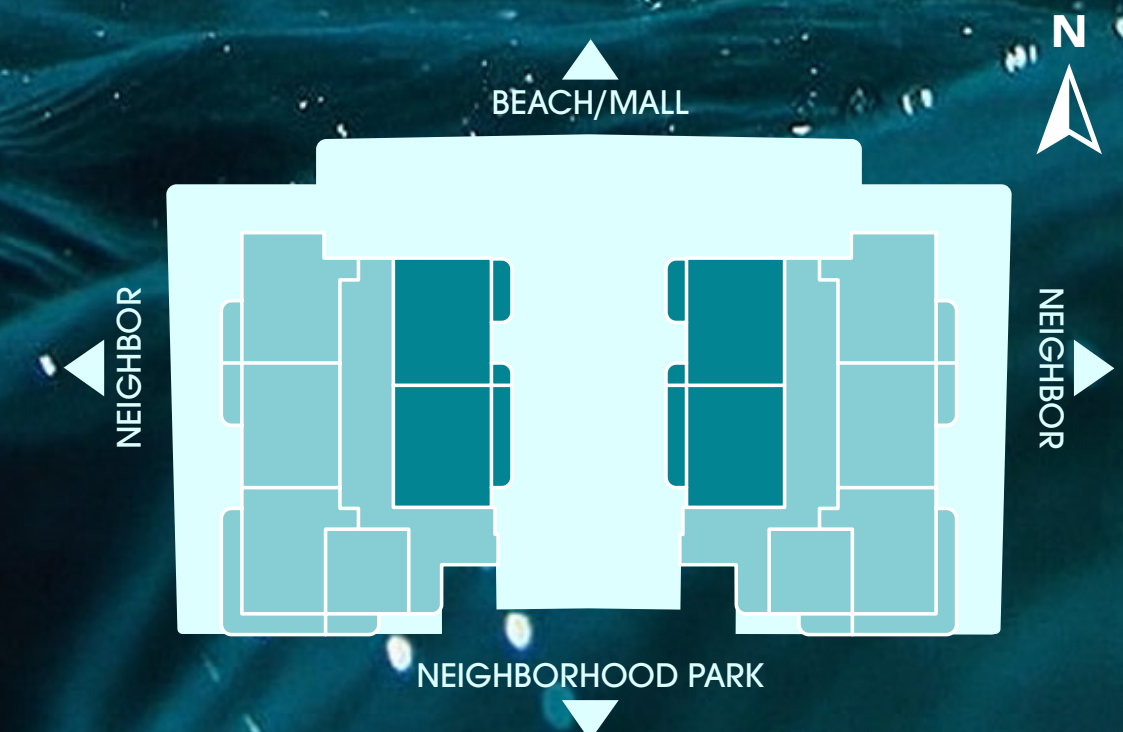
R E S I D E N C E S

## 2 BHK - Type 4



FLOOR AVAILABILITY: 8TH  
 BUILDING AVAILABILITY: A + B  
 NUMBER OF UNITS: 4

SUITE AREA 1,203 FT<sup>2</sup>  
 BALCONY 165 - 211 FT<sup>2</sup>  
 TOTAL AREA 1,368 - 1,414 FT<sup>2</sup>



# KAIA

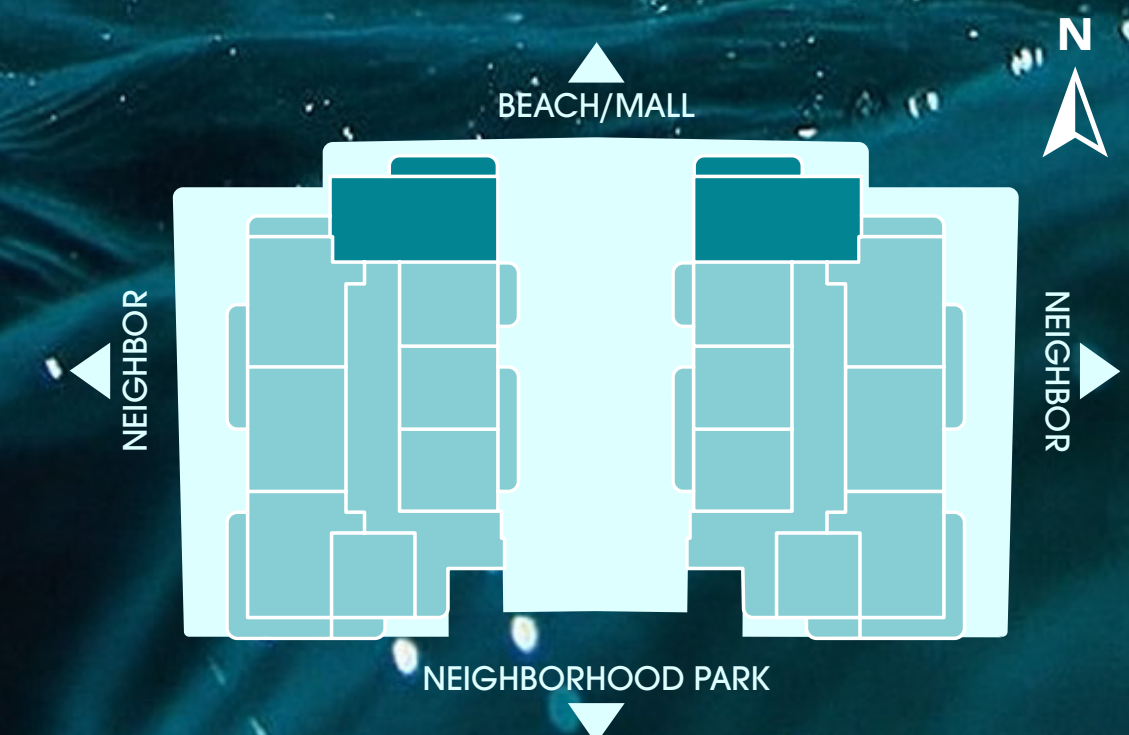
R E S I D E N C E S

## 3 BHK



FLOOR AVAILABILITY: 3RD TO 6TH  
 BUILDING AVAILABILITY: A + B  
 NUMBER OF UNITS: 8

SUITE AREA 1,399 FT<sup>2</sup>  
 BALCONY 219 - 344 FT<sup>2</sup>  
 TOTAL AREA 1,618 - 1,743 FT<sup>2</sup>



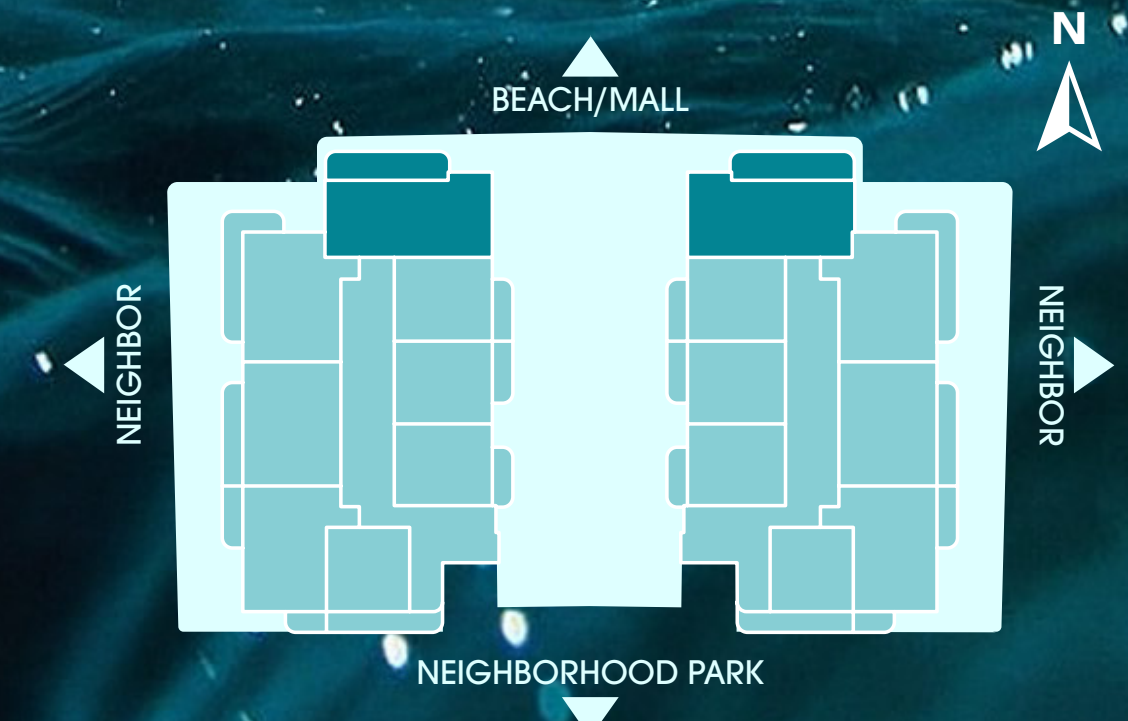
# KAIYA

R E S I D E N C E S

## 4 BHK DUPLEX

FLOOR AVAILABILITY: 7TH & 8TH  
 BUILDING AVAILABILITY: A + B  
 NUMBER OF UNITS: 2

SUITE AREA 2,515 FT<sup>2</sup>  
 BALCONY 562 FT<sup>2</sup>  
 TOTAL AREA 3,077 FT<sup>2</sup>



### Lower Floor



MAIN ENTRANCE

### Upper Floor



Disclaimer: This document is intended for estimation purposes only. The information contained here in is subject to change and may be modified during the course of construction. The developer reserves the right to make adjustments as necessary without prior notice. Any discrepancies or variations that arise during the construction process will be addressed and resolved in accordance with the projects requirements and best practices. Areas are tentative and can change within the allowed limit.