

عنا

WAY OF WATER

DUBAI

FLOOR PLAN TYPES



UNIT MIX

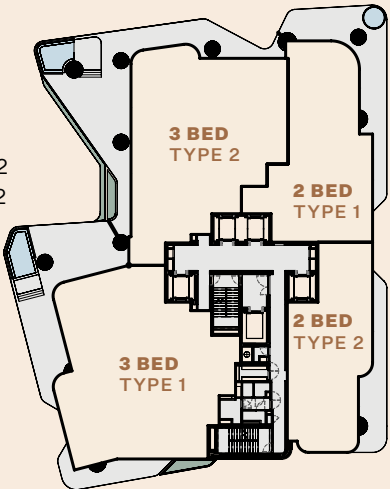
LEVEL 3-14

3 BED TYPE 2

302 / 402 / 502
602 / 702 / 802
902 / 1002 / 1102
1202 / 1302 / 1402

3 BED TYPE 1

301 / 401 / 501
601 / 701 / 801
901 / 1001 / 1101
1201 / 1301 / 1401



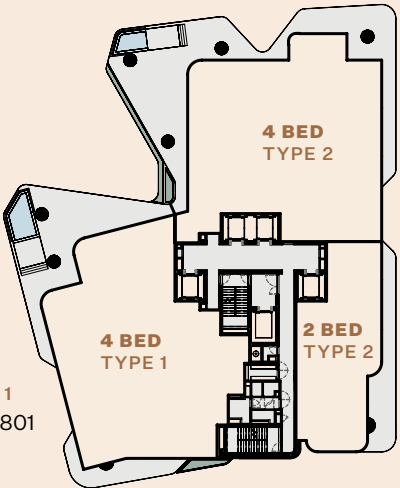
2 BED TYPE 1

303 / 403 / 503
603 / 703 / 803
903 / 1003 / 1103
1203 / 1303 / 1403

2 BED TYPE 2

304 / 404 / 504
604 / 704 / 804
904 / 1004 / 1104
1204 / 1304 / 1404

LEVEL 16-18



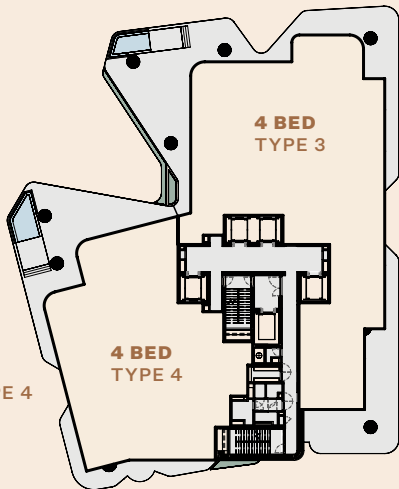
4 BED TYPE 2

1602 / 1702 / 1802

2 BED TYPE 2

1603 / 1703 / 1803

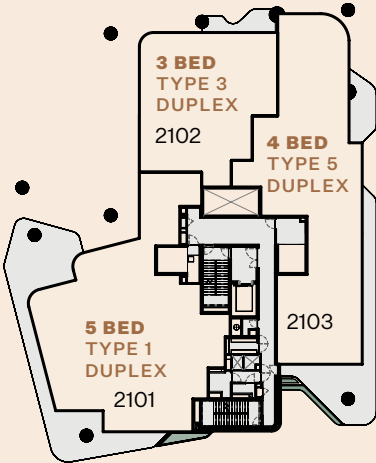
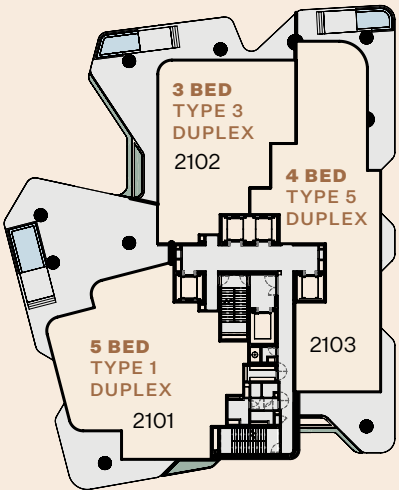
LEVEL 19-20



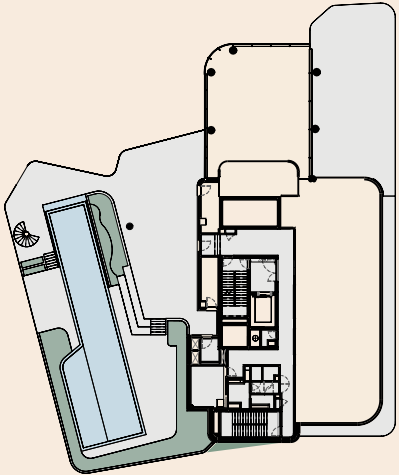
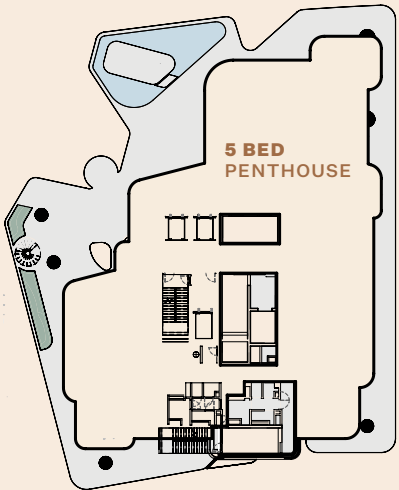
4 BED TYPE 3

1902 / 2002

LEVEL 21-22 DUPLEX



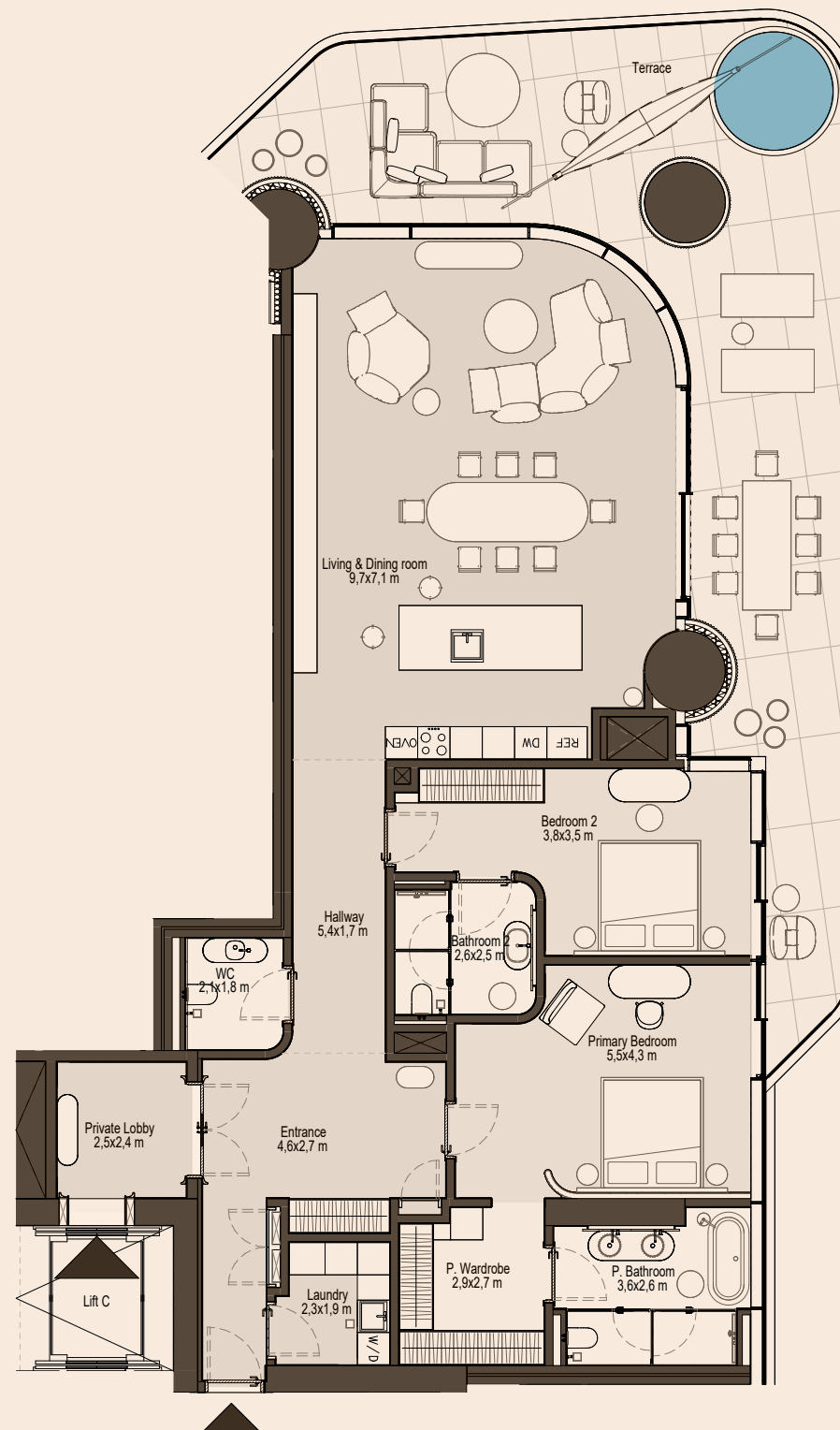
LEVEL 23-24 PENTHOUSE



2 BEDROOM TYPE 1

Internal area:	198 m ²	2,128 ft ²
Balcony:	77 m ²	830 ft ²
Total area:	275 m ²	2,958 ft ²

- Living/Dining Room • Open-plan Kitchen
- Bedrooms: 2 • Dressing Rooms
 - Bathrooms: 2 • Powder Room • Laundry
 - Private Lobby • Pool • Waterfall

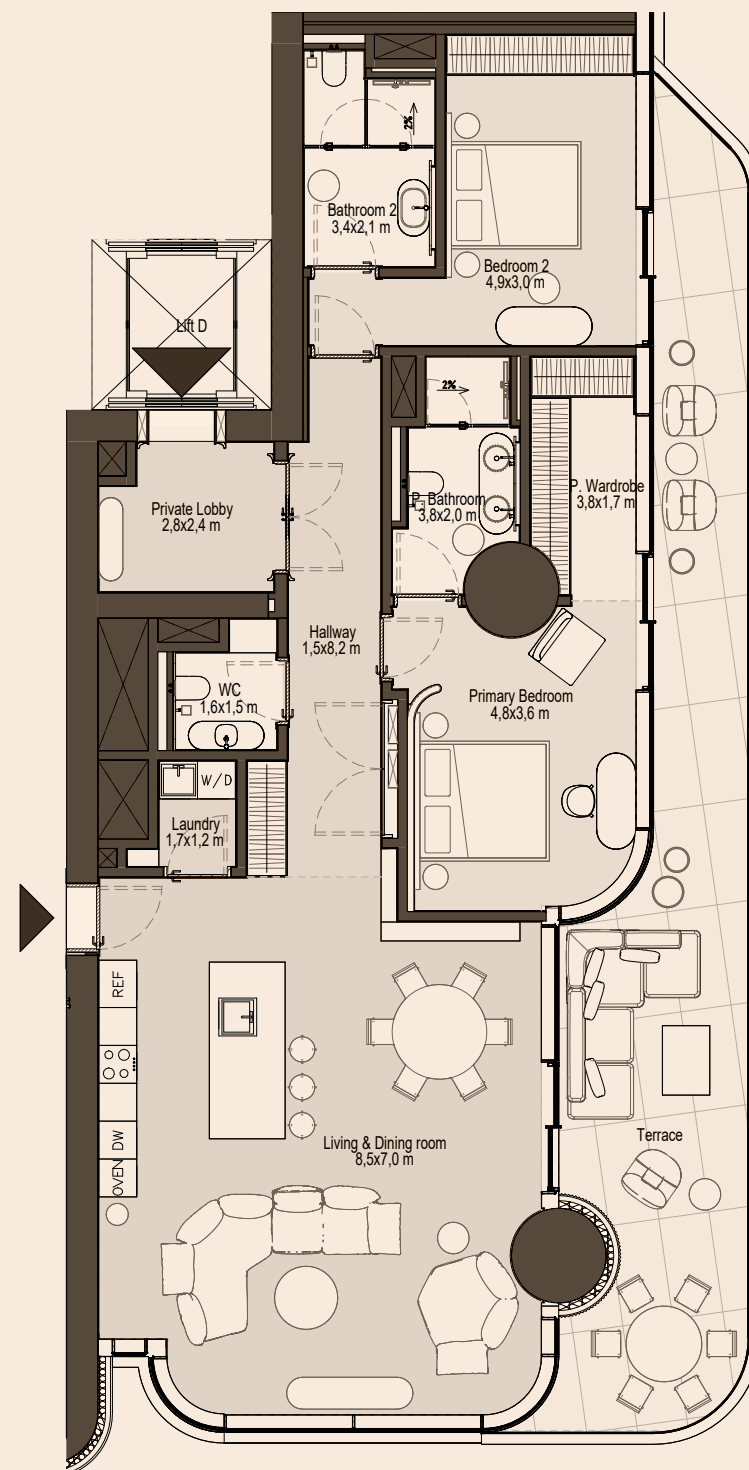
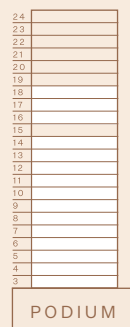


2 BEDROOM TYPE 2

Internal area:	160 m ²	1,716 ft ²
Balcony:	44 m ²	468 ft ²
Total area:	203 m ²	2,184 ft ²

Living/Dining Room • Open-plan Kitchen

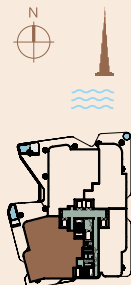
- Bedrooms: 2 • Dressing Rooms
- Bathrooms: 2 • Powder Room • Laundry
- Private Lobby • Pool • Waterfall



3 BEDROOM TYPE 1

Internal area:	314 m ²	3,384 ft ²
Balcony:	150 m ²	1,618 ft ²
Total area:	465 m ²	5,002 ft ²

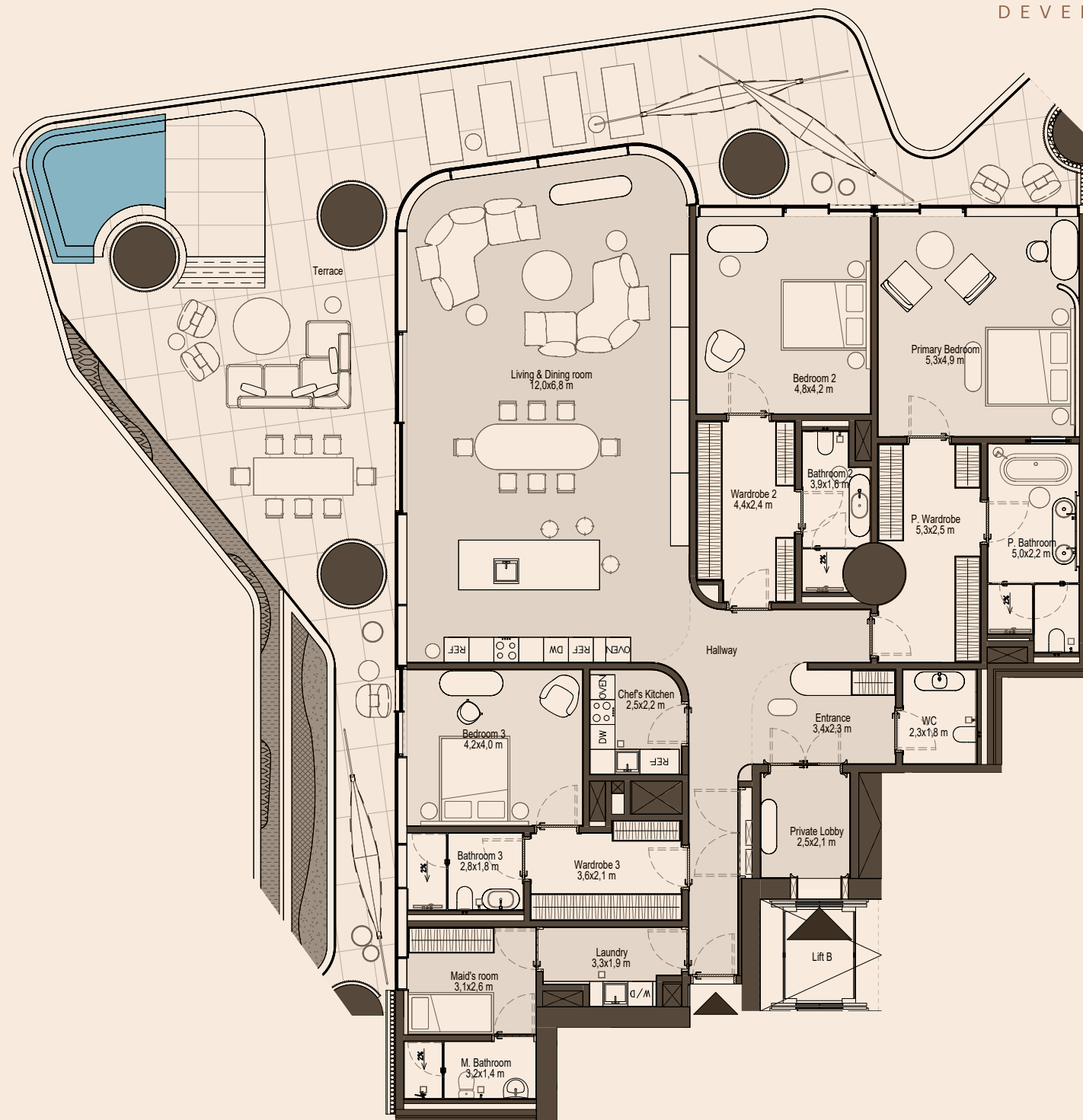
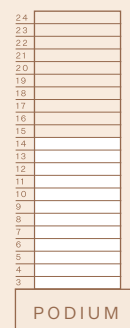
Living/Dining Room • Open-plan Kitchen
 • Main Kitchen • Bedrooms: 3 • Dressing Rooms: 3
 • Bathrooms: 3 • Powder Room • Laundry
 • Maid's Room • Private Lobby • Delivery & Service
 Entrance • Pool • Waterfall



3 BEDROOM TYPE 2

Internal area:	291 m ²	3,126 ft ²
Balcony:	155 m ²	1,665 ft ²
Total area:	445 m ²	4,792 ft ²

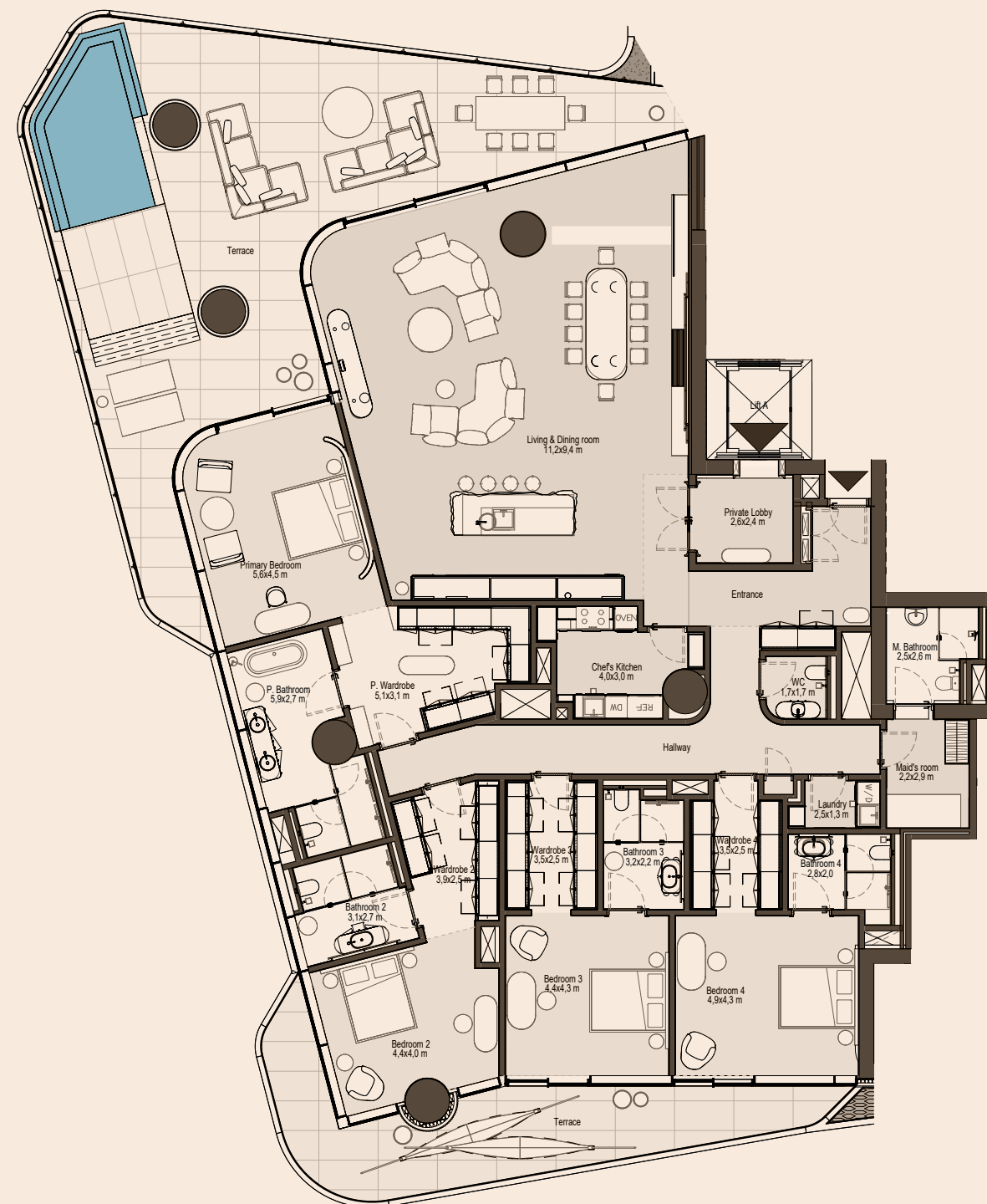
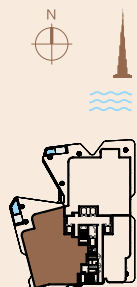
- Living/Dining Room • Open-plan Kitchen
 • Main Kitchen • Bedrooms: 3 • Dressing
 Rooms: 3 • Bathrooms: 3 • Powder Room
 • Laundry • Maid's Room • Private Lobby
 • Delivery & Service Entrance • Pool • Waterfall



4 BEDROOM TYPE 1

Internal area:	382 m ²	4,112 ft ²
Balcony:	145 m ²	1,565 ft ²
Total area:	527 m ²	5,677 ft ²

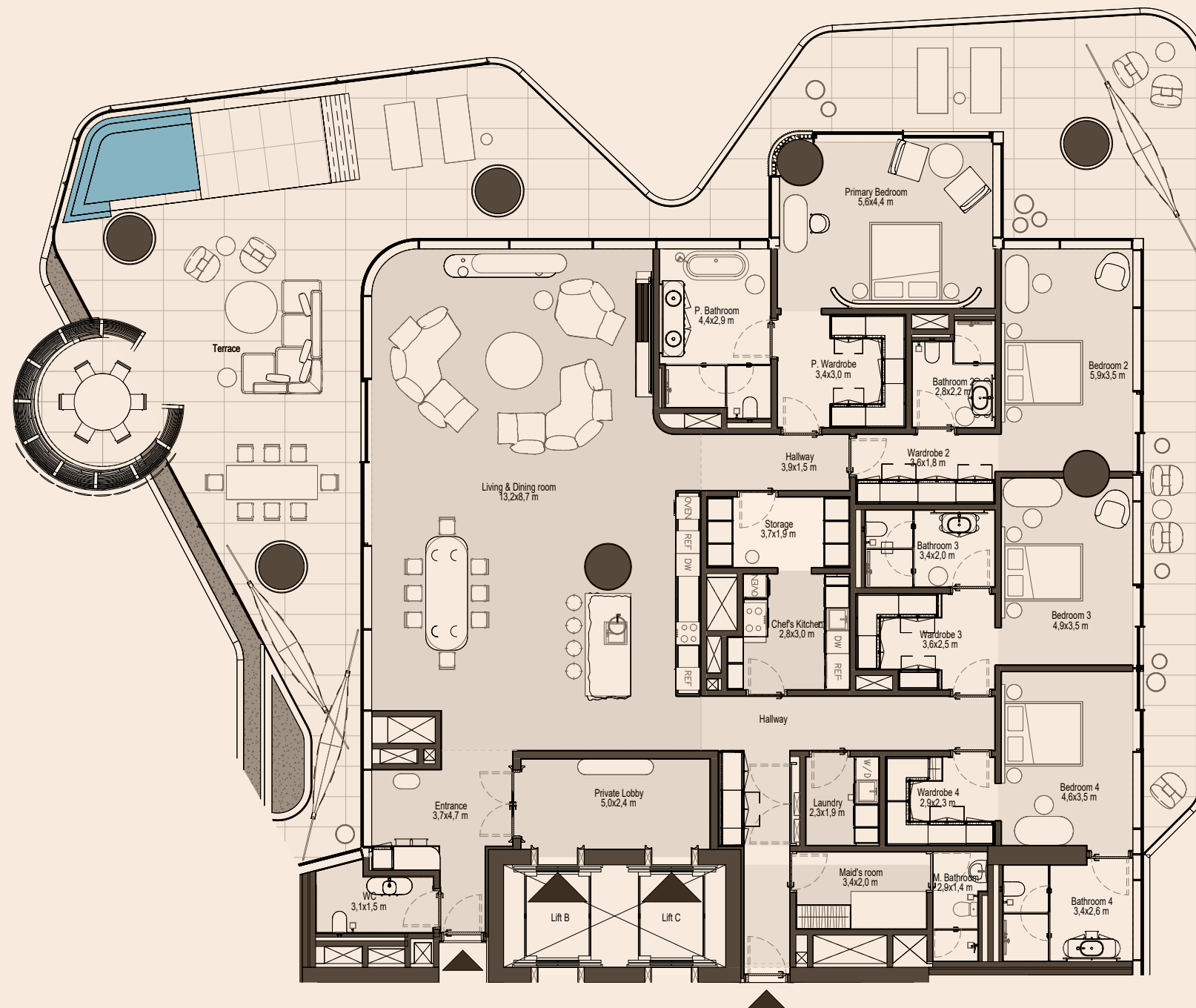
Living/Dining Room • Open-plan Kitchen
 • Family Room • Main Kitchen • Bedrooms: 4
 • Dressing Rooms: 4 • Bathrooms: 4
 • Powder Room • Laundry • Maid's Room
 • Private Lobby with 2 Lifts • Delivery & Service
 Entrance • Pool • Waterfall



4 BEDROOM TYPE 2

Internal area: 385 m² 4,146 ft²
Balcony: 204 m² 2,200 ft²
Total area: 590 m² 6,347 ft²

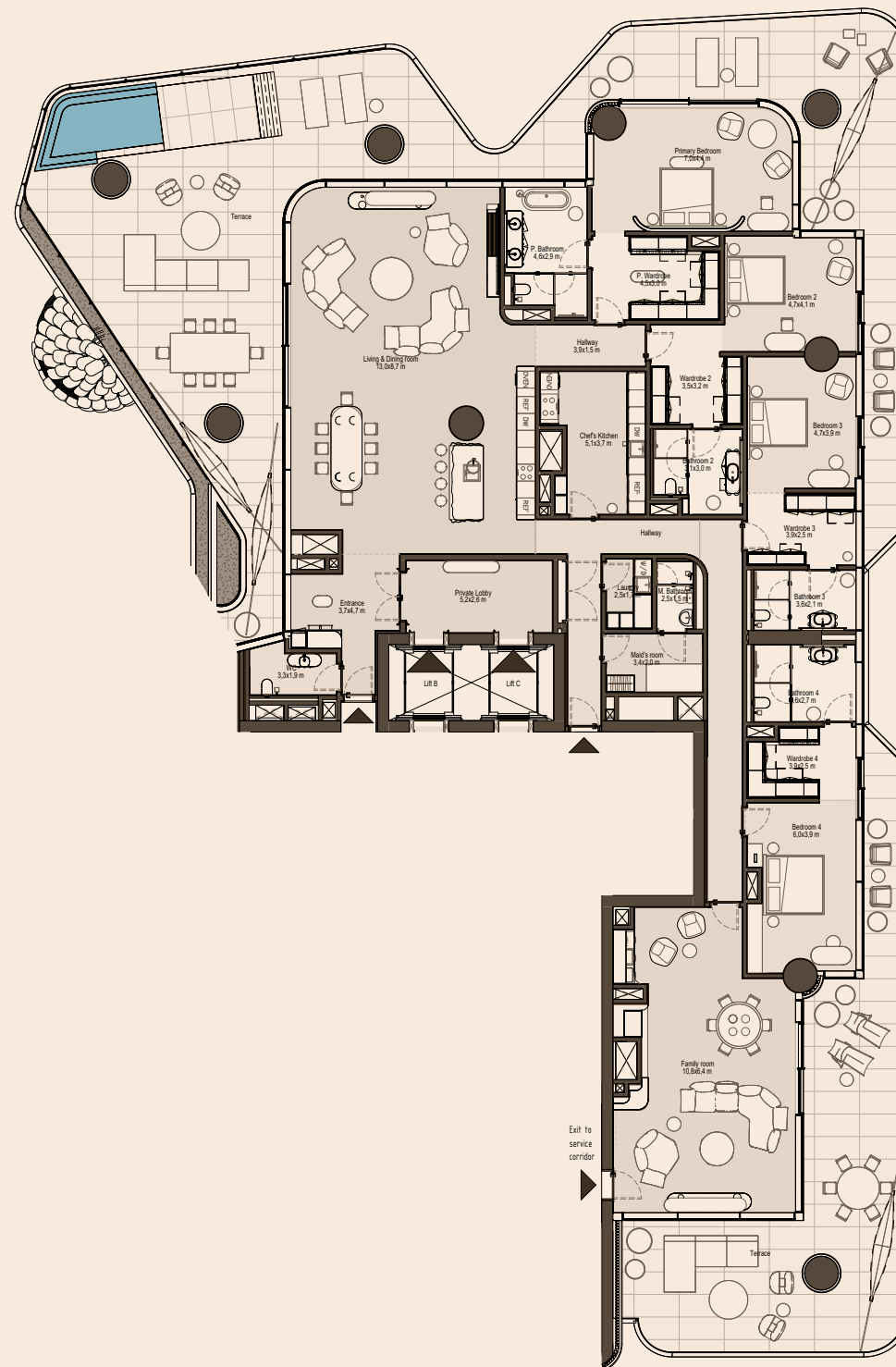
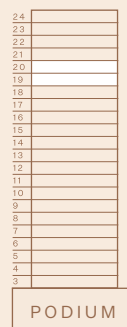
Living/Dining Room • Open-plan Kitchen
• Main Kitchen • Bedrooms: 3 • Dressing
Rooms: 3 • Bathrooms: 3 • Powder Room
• Laundry • Maid's Room • Private Lobby
• Delivery & Service Entrance • Pool • Waterfall



4 BEDROOM TYPE 3

Internal area:	502 m ²	5,403 ft ²
Balcony:	297 m ²	3,201 ft ²
Total area:	799 m ²	8,605 ft ²

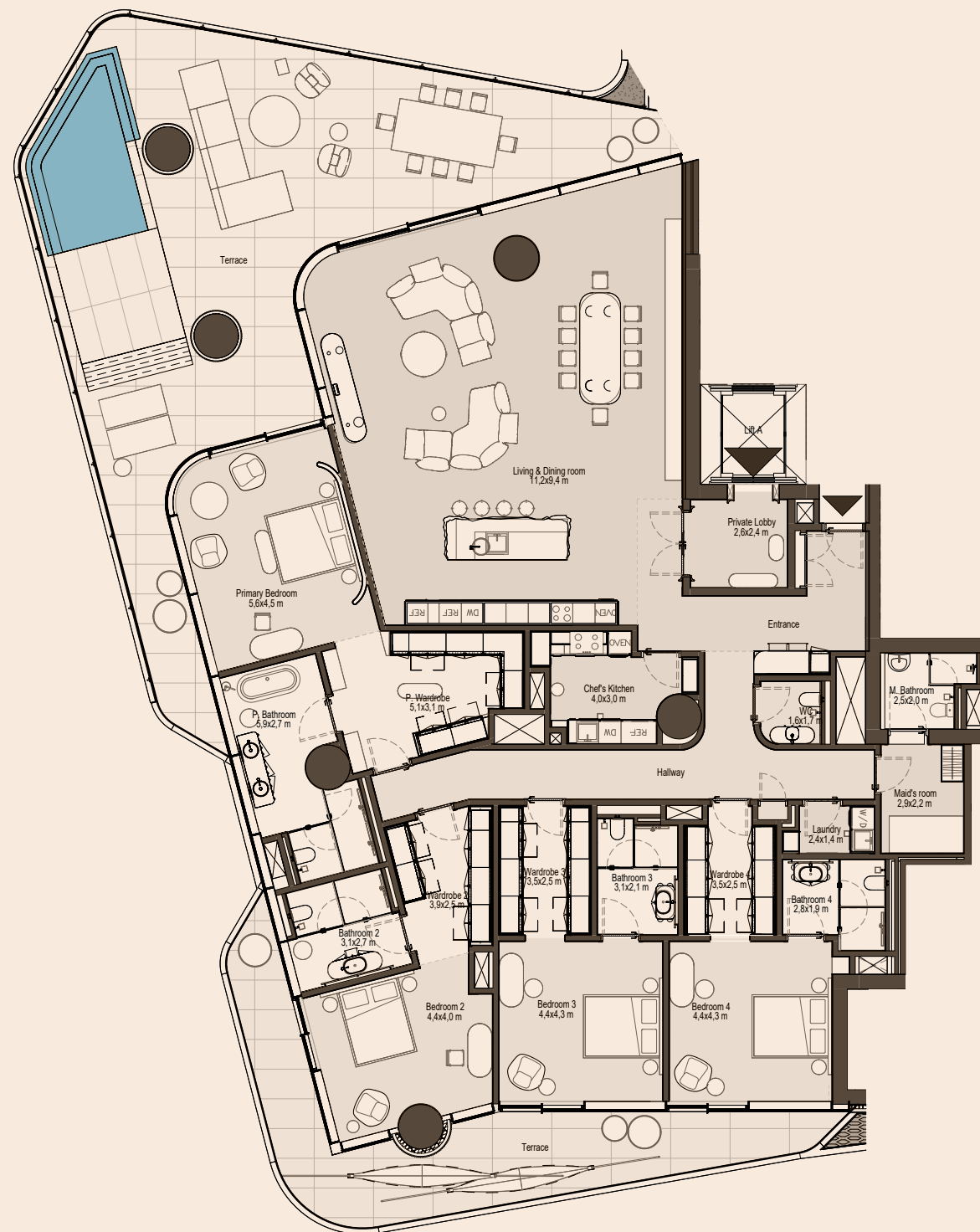
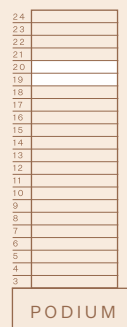
Living/Dining Room • Open-plan Kitchen
 • Family Room • Main Kitchen • Bedrooms: 4
 • Dressing Rooms: 4 • Bathrooms: 4 • Powder
 Room • Laundry • Maid's Room • Private Lobby
 with 2 Lifts • Delivery & Service Entrance • Pool
 • Waterfall



4 BEDROOM TYPE 4

Internal area:	378 m ²	4,073 ft ²
Balcony:	151 m ²	1,624 ft ²
Total area:	529 m ²	5,697 ft ²

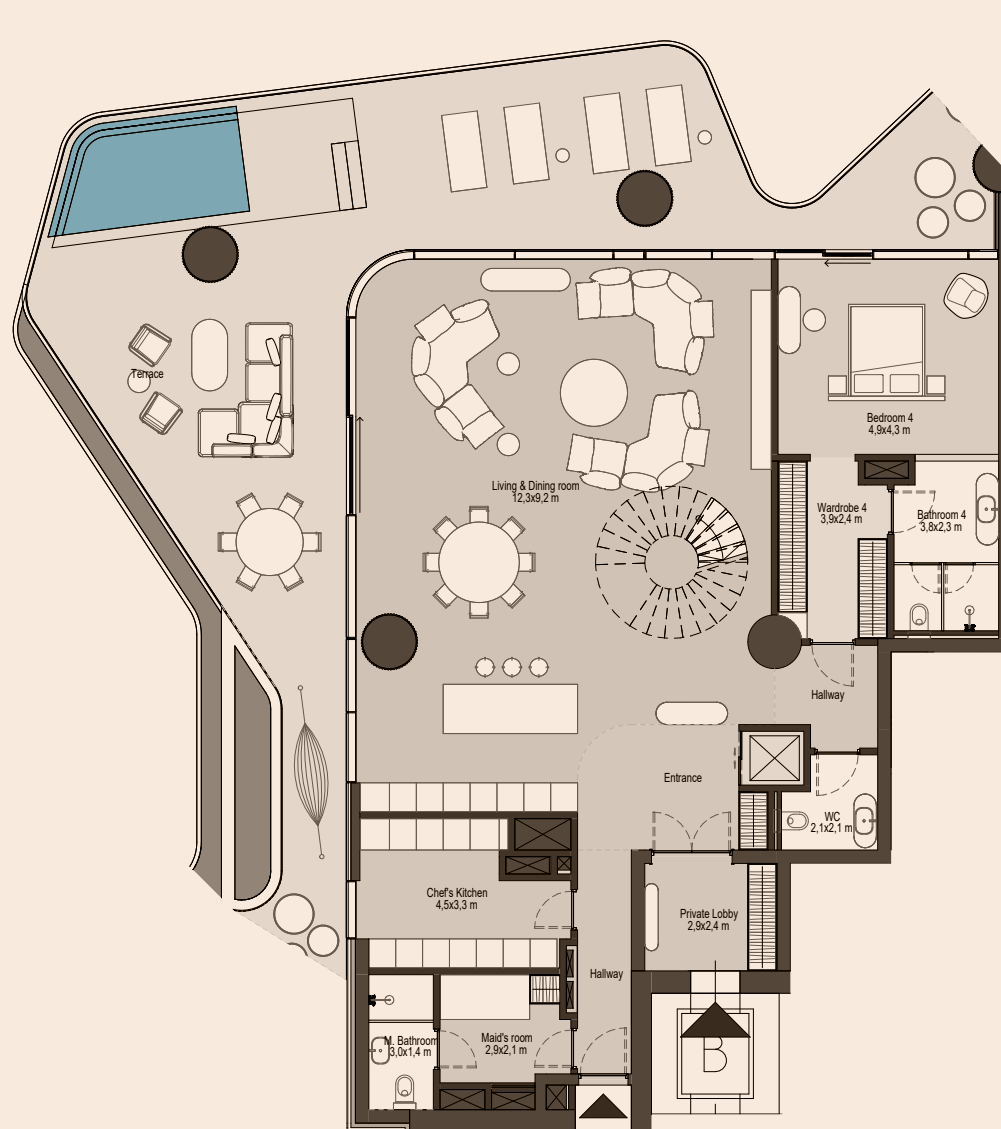
Living/Dining Room • Open-plan Kitchen •
Family Room • Main Kitchen • Bedrooms: 4
• Dressing Rooms: 4 • Bathrooms: 4
• Powder Room • Laundry • Maid's Room
• Private Lobby with 2 Lifts • Delivery & Service
Entrance • Pool • Waterfall



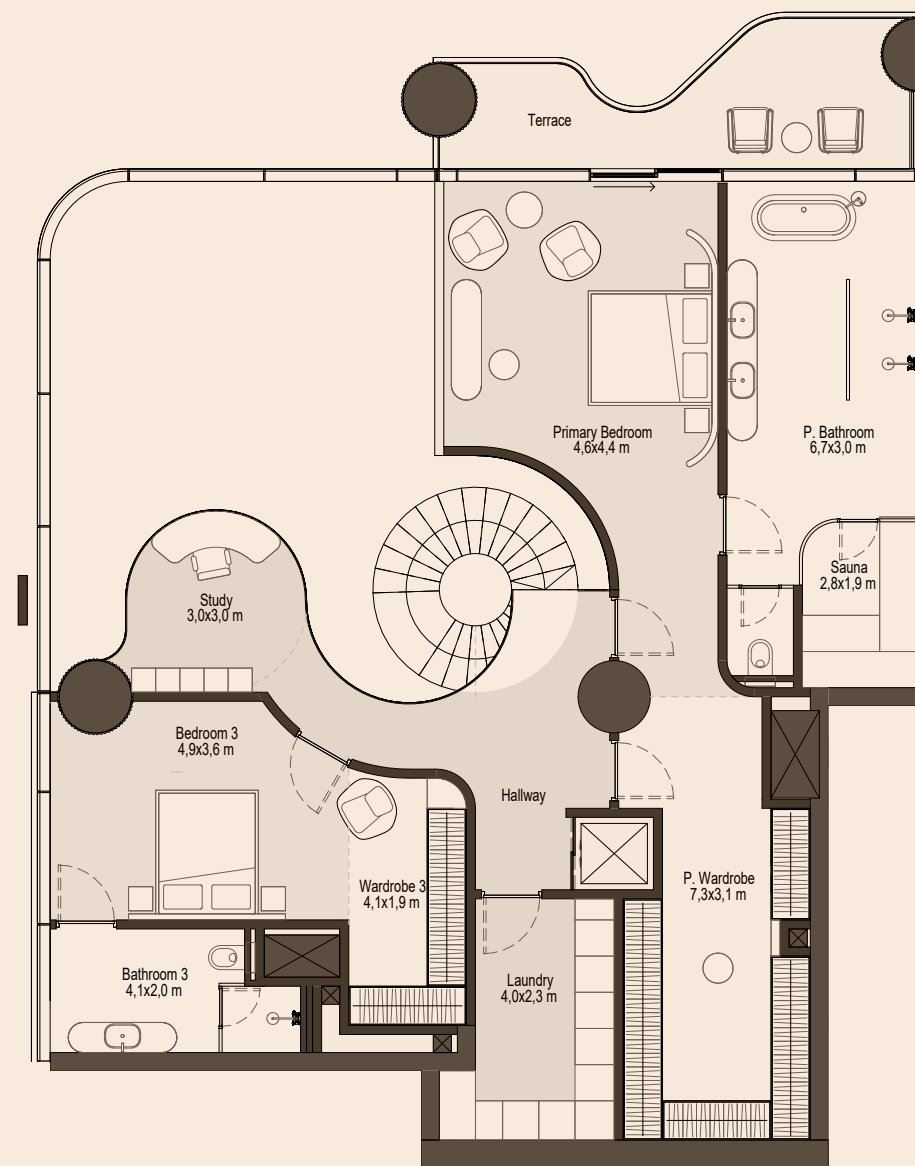
3 BEDROOM DUPLEX

Internal area: 392 m² 4,217 ft²
Balcony: 138 m² 1,489 ft²
Total area: 530 m² 5,706 ft²

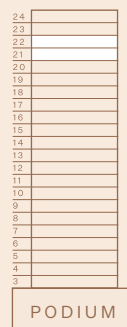
Living/Dining Room • Open-plan Kitchen • Library
& Study Room • Main Kitchen • Bedrooms: 3
• Dressing Rooms: 3 • Bathrooms: 3 • Sauna
• Powder Room • Laundry • Maid's Room • Private
Lobby with 2 Lifts • Delivery & Service Entrance
• Pool • Waterfall



LEVEL 1



LEVEL 2

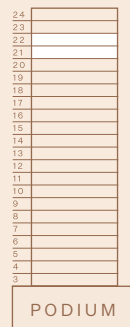


Eyeza

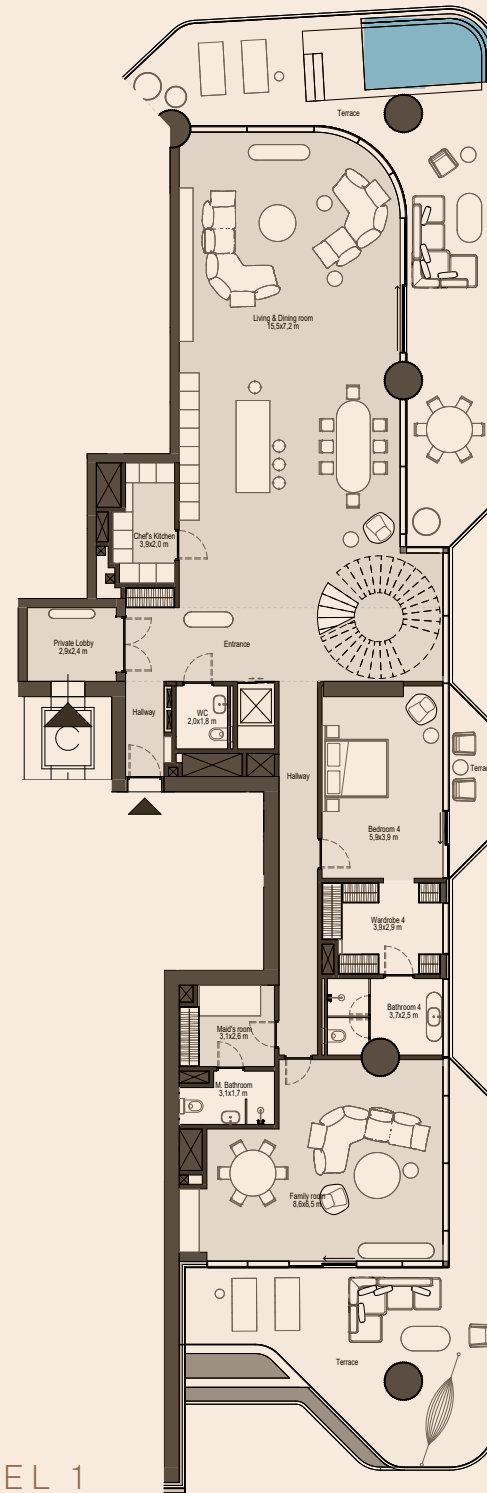
4 BEDROOM DUPLEX

Internal area: 568 m² 6,116 ft²
Balcony: 243 m² 2,618 ft²
Total area: 811 m² 8,734 ft²

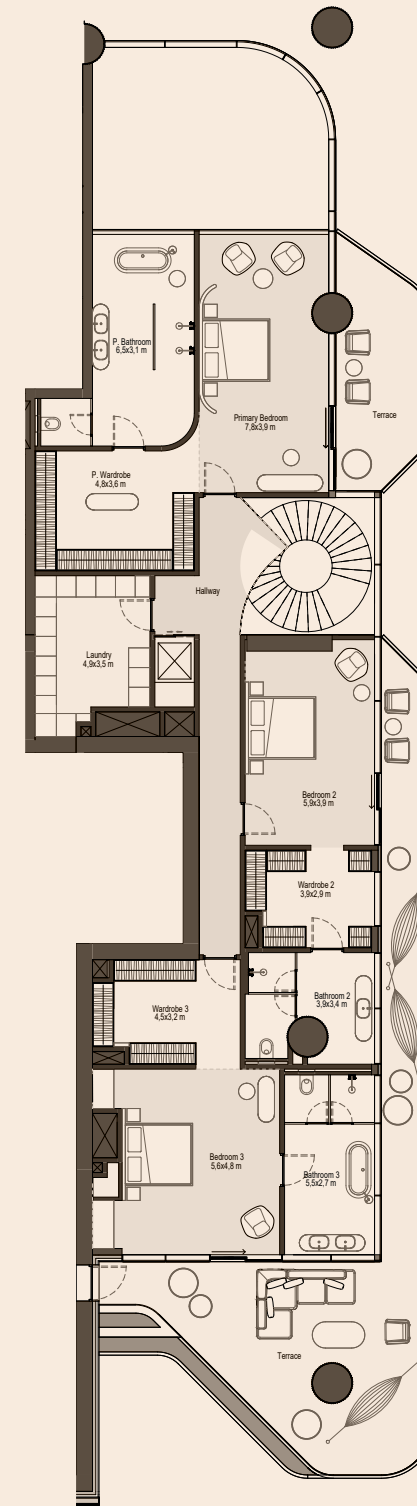
Living/Dining Room • Open-plan Kitchen
• Family Room • Library & Study Room • Main Kitchen
• Bedrooms: 4 • Dressing Rooms: 4 • Bathrooms: 4
• Powder Room • Laundry • Maid's Room • Private Lobby
with 2 Lifts • Delivery & Service Entrance • Pool
• Waterfall



LEVEL 1



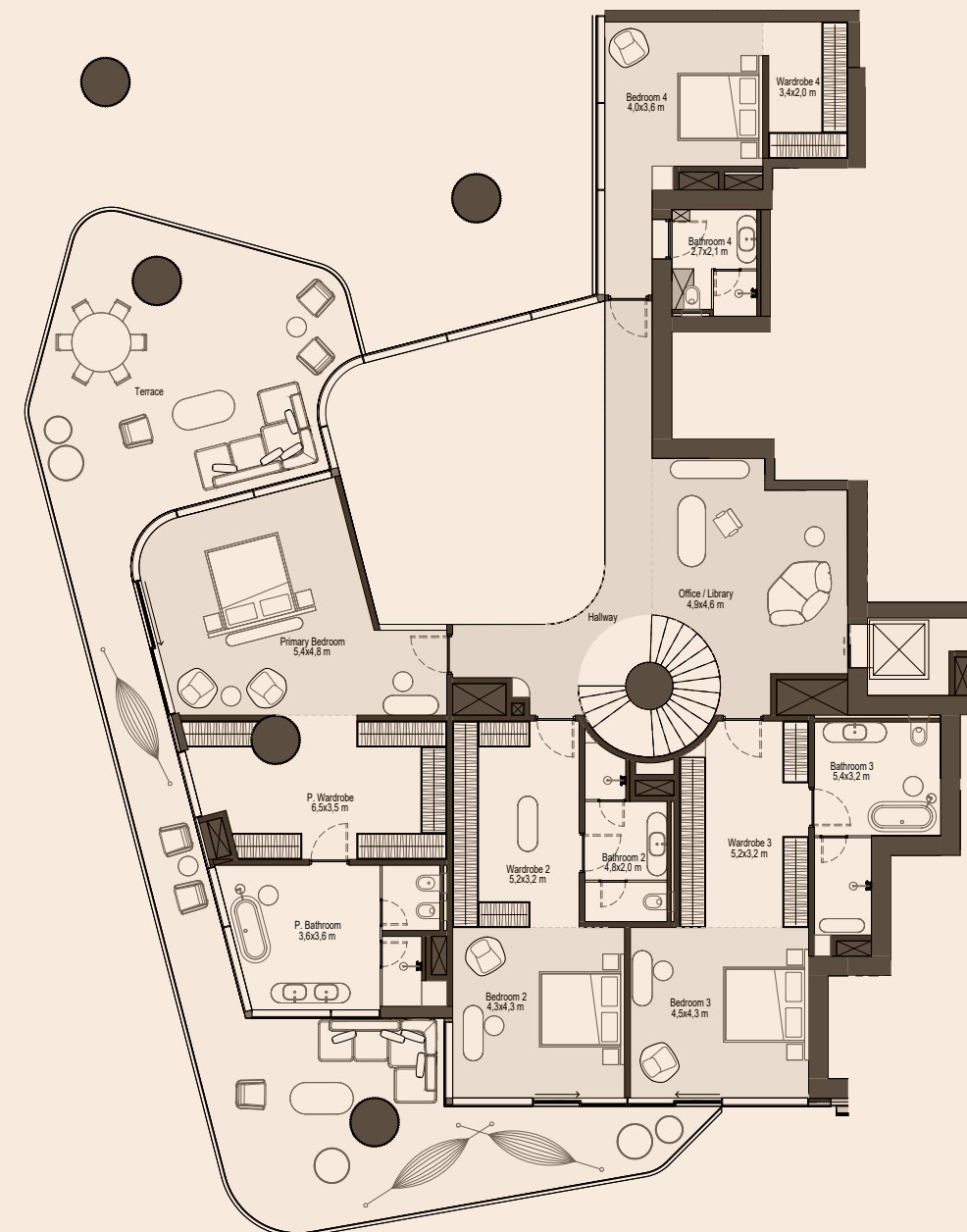
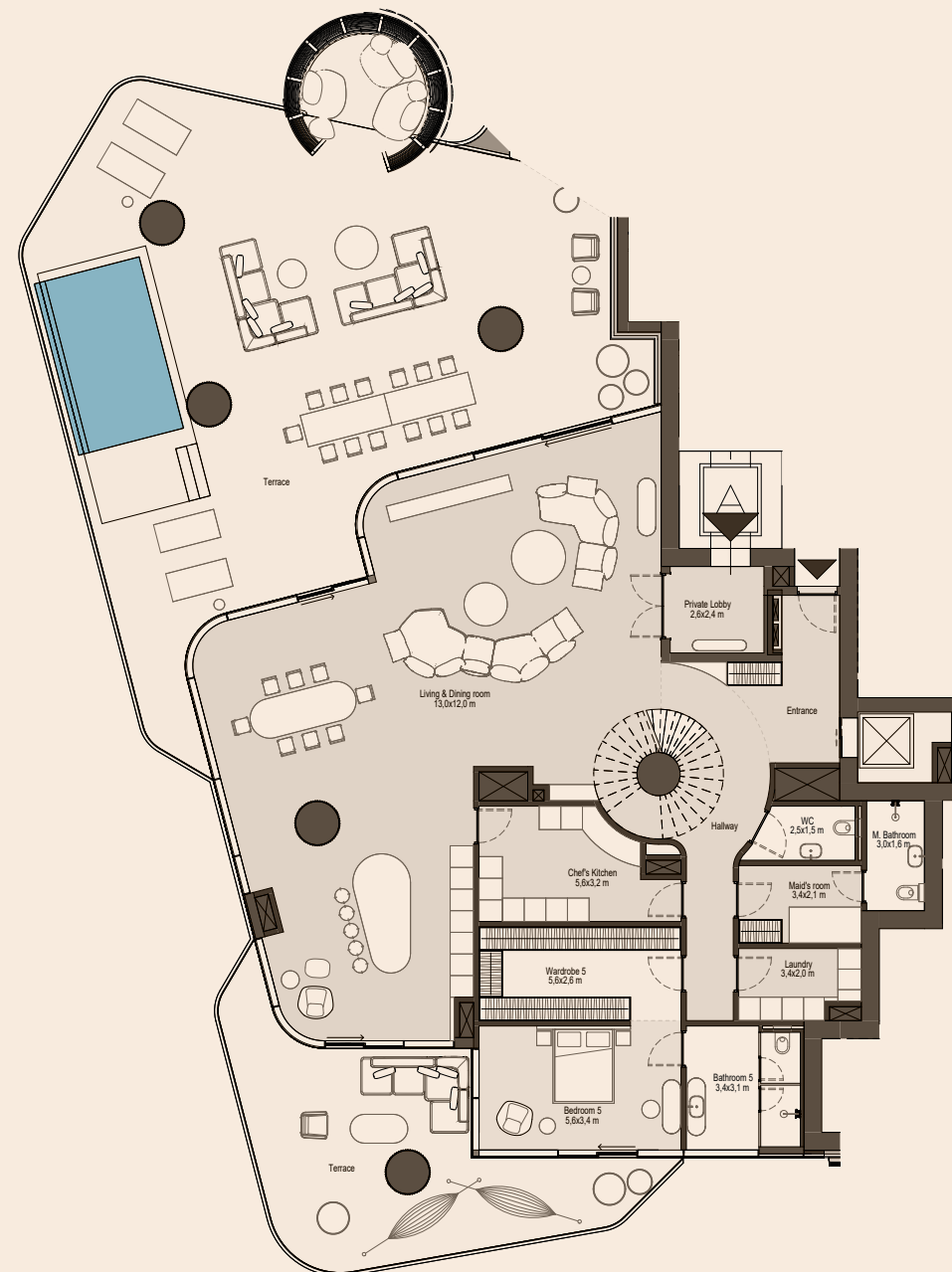
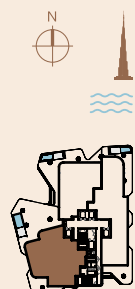
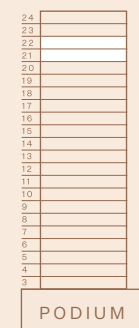
LEVEL 2



5 BEDROOM DUPLEX

Internal area: 581 m² 6,253 ft²
Balcony: 351 m² 3,774 ft²
Total area: 932 m² 10,027 ft²

- Living/Dining Room • Open-plan Kitchen • Family Room
• Library & Study Room • Main Kitchen • Bedrooms: 5
• Dressing Rooms: 5 • Bathrooms: 5 • Powder Room
• Laundry • Maid's Room • Private Lobby with 2 Lifts
• Delivery & Service Entrance • Pool • Waterfall
• Sky Lounge Nest



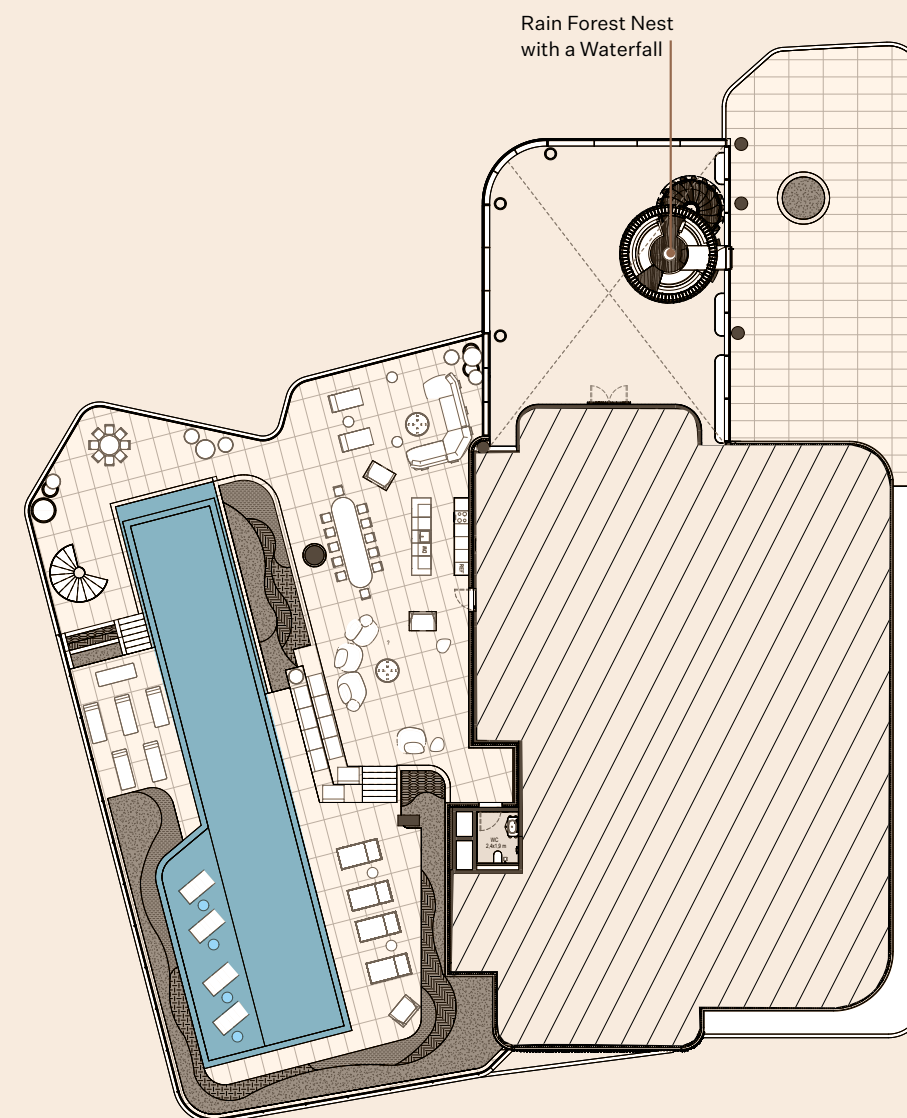
5 BEDROOM PENTHOUSE

Internal area: 979 m² 10,540 ft²
Balcony: 1321 m² 14,216 ft²
Total area: 2299 m² 24,756 ft²

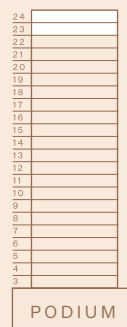
- Living/Dining Room • Open-plan Kitchen
• Library & Study Room • Main Kitchen • Bedrooms: 3
• Dressing Rooms: 3 • Bathrooms: 3 • Sauna
• Powder Room • Laundry • Maid's Room
• Private Lobby with 2 Lifts • Delivery & Service Entrance
• Pools • Waterfall



LEVEL 1



LEVEL 2



PODIUM