

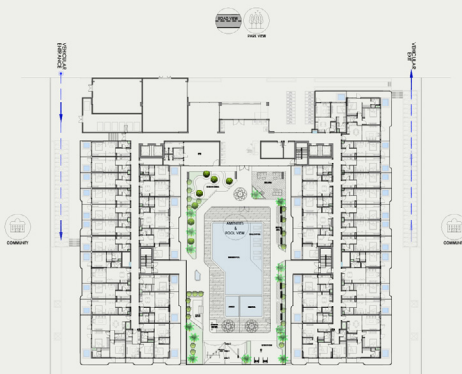


SAMANA  
IMPERIAL  
GARDEN

FLOOR PLANS

# GROUND FLOOR PLAN

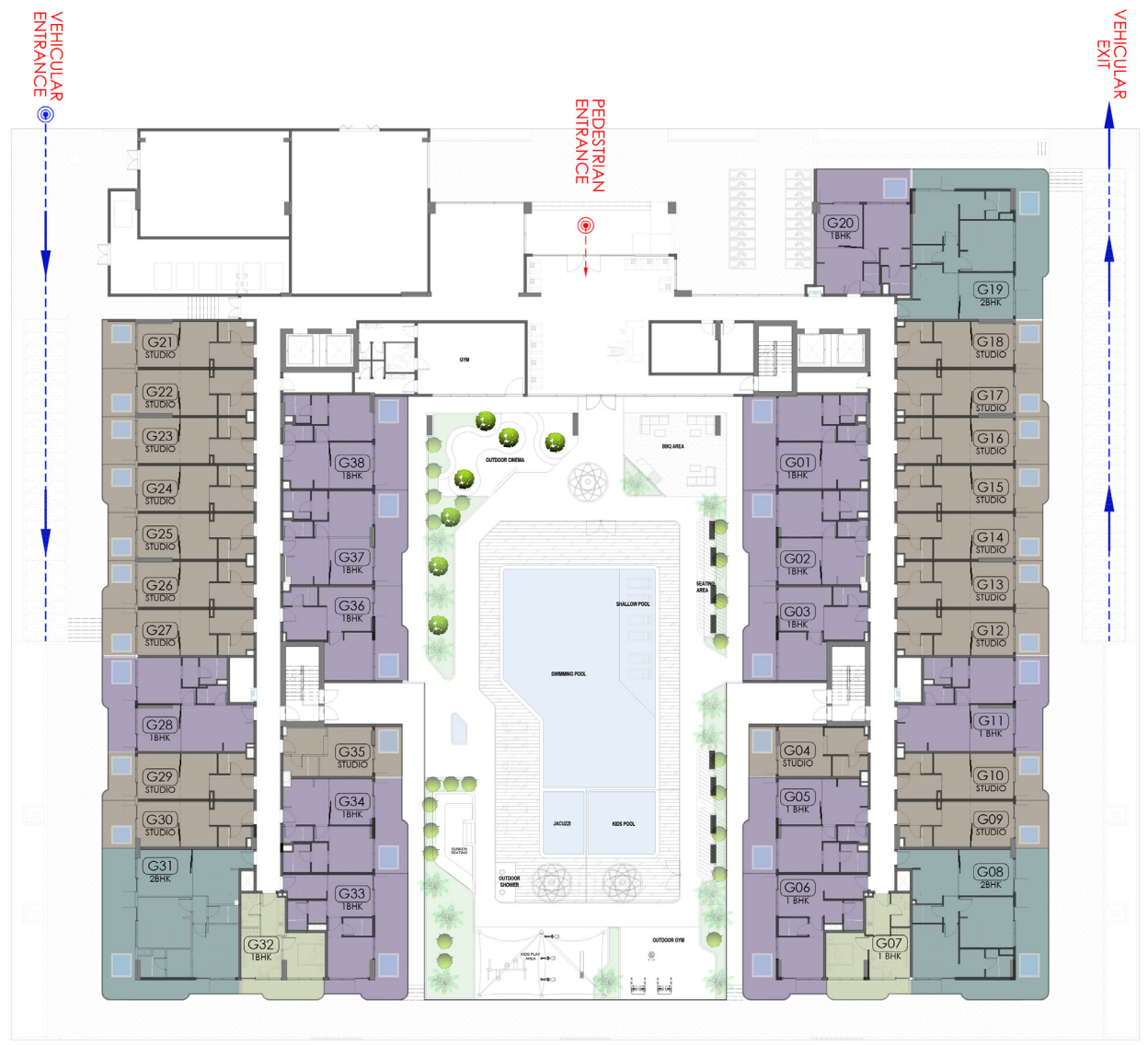
- STUDIO WITH POOL
- 1 BEDROOM WITH POOL
- 1 BEDROOM WITHOUT POOL
- 2 BEDROOM WITH POOL



Ground Floor Plan Key Plan

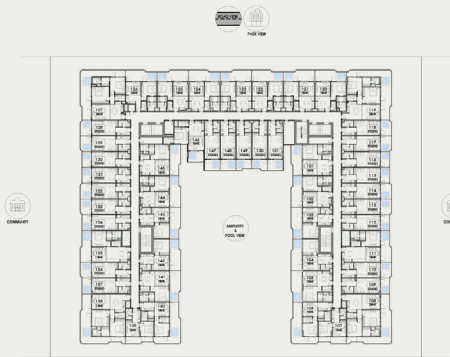


- FEATURES
- CONVERTIBLE UNITS



# 1<sup>st</sup> FLOOR PLAN

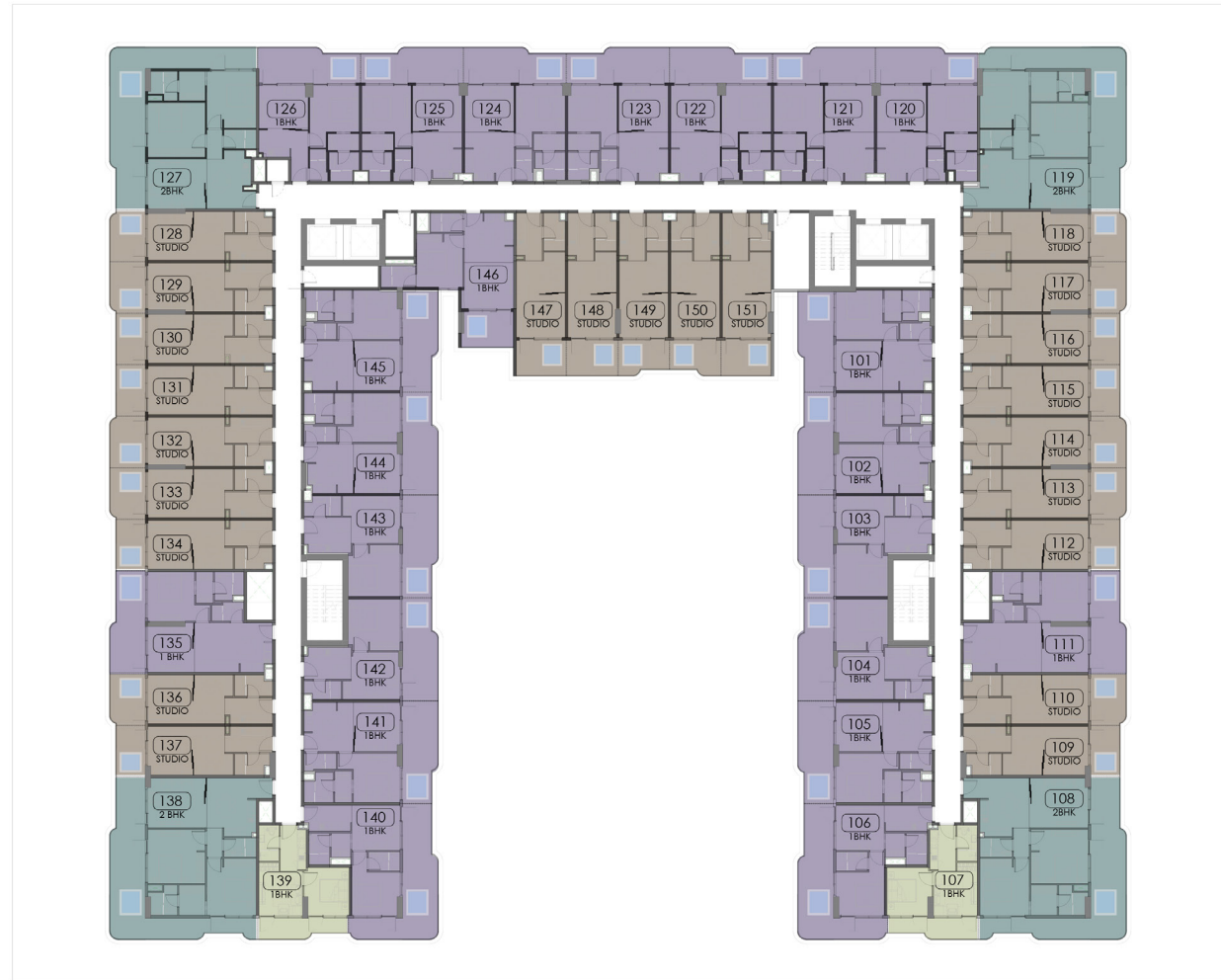
- STUDIO WITH POOL
- 1 BEDROOM WITH POOL
- 1 BEDROOM WITHOUT POOL
- 2 BEDROOM WITH POOL



1st Floor Plan  
Key Plan

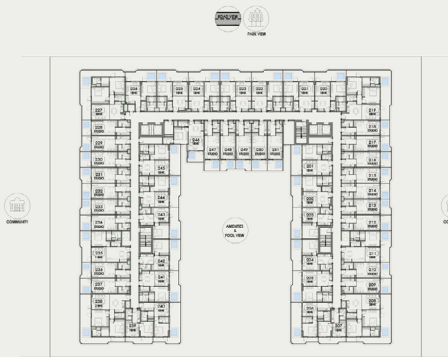


- FEATURES
- CONVERTIBLE UNITS



## 2<sup>nd</sup> FLOOR PLAN

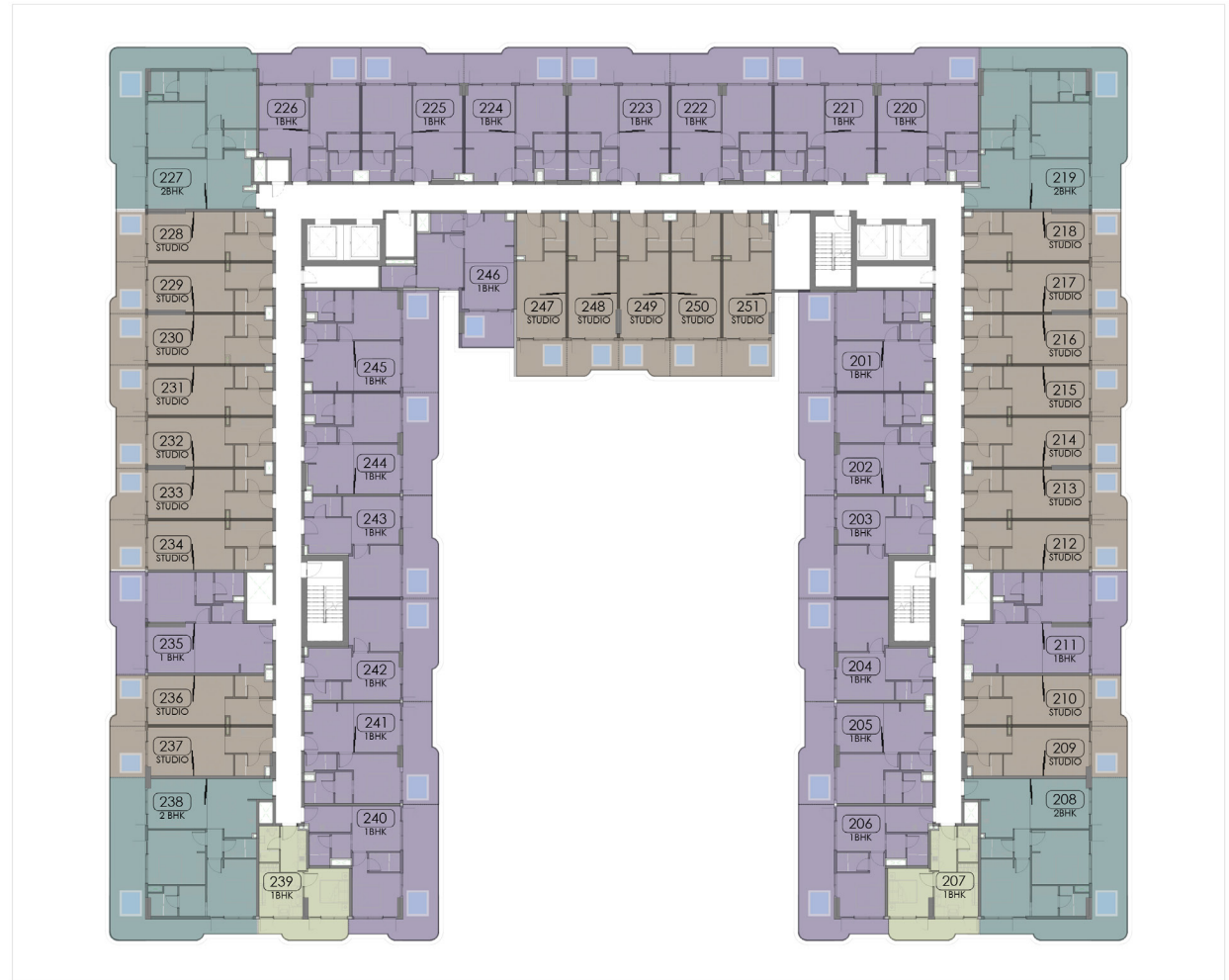
- STUDIO WITH POOL
- 1 BEDROOM WITH POOL
- 1 BEDROOM WITHOUT POOL
- 2 BEDROOM WITH POOL



2nd Floor Plan  
Key Plan

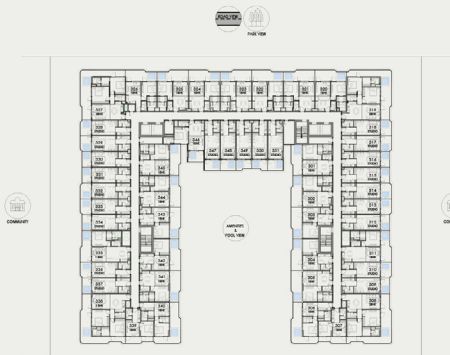
### FEATURES

- CONVERTIBLE UNITS



# 3<sup>rd</sup> FLOOR PLAN

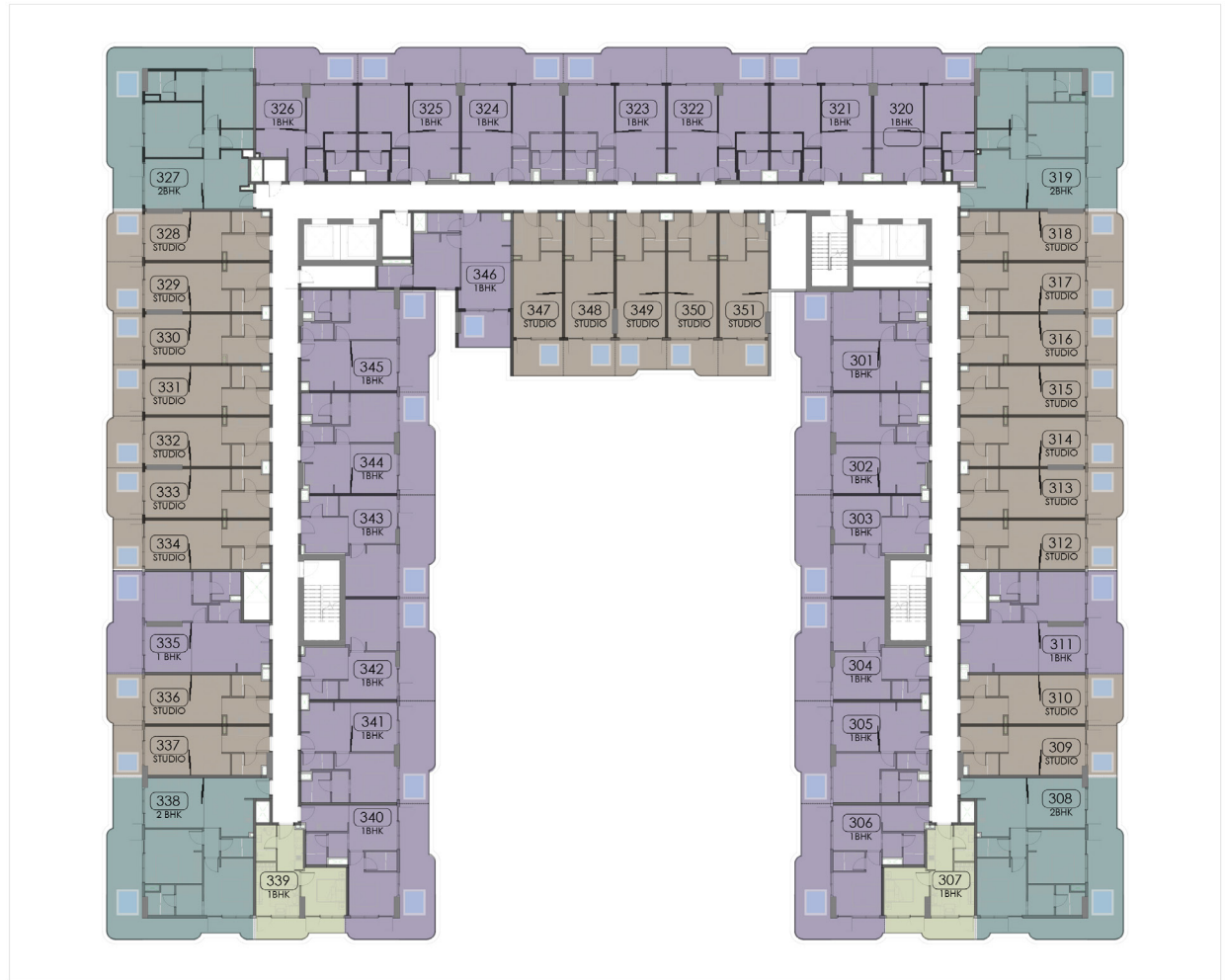
- STUDIO WITH POOL
- 1 BEDROOM WITH POOL
- 1 BEDROOM WITHOUT POOL
- 2 BEDROOM WITH POOL



3rd Floor Plan  
Key Plan



- FEATURES
- CONVERTIBLE UNITS



# 4<sup>th</sup> FLOOR PLAN

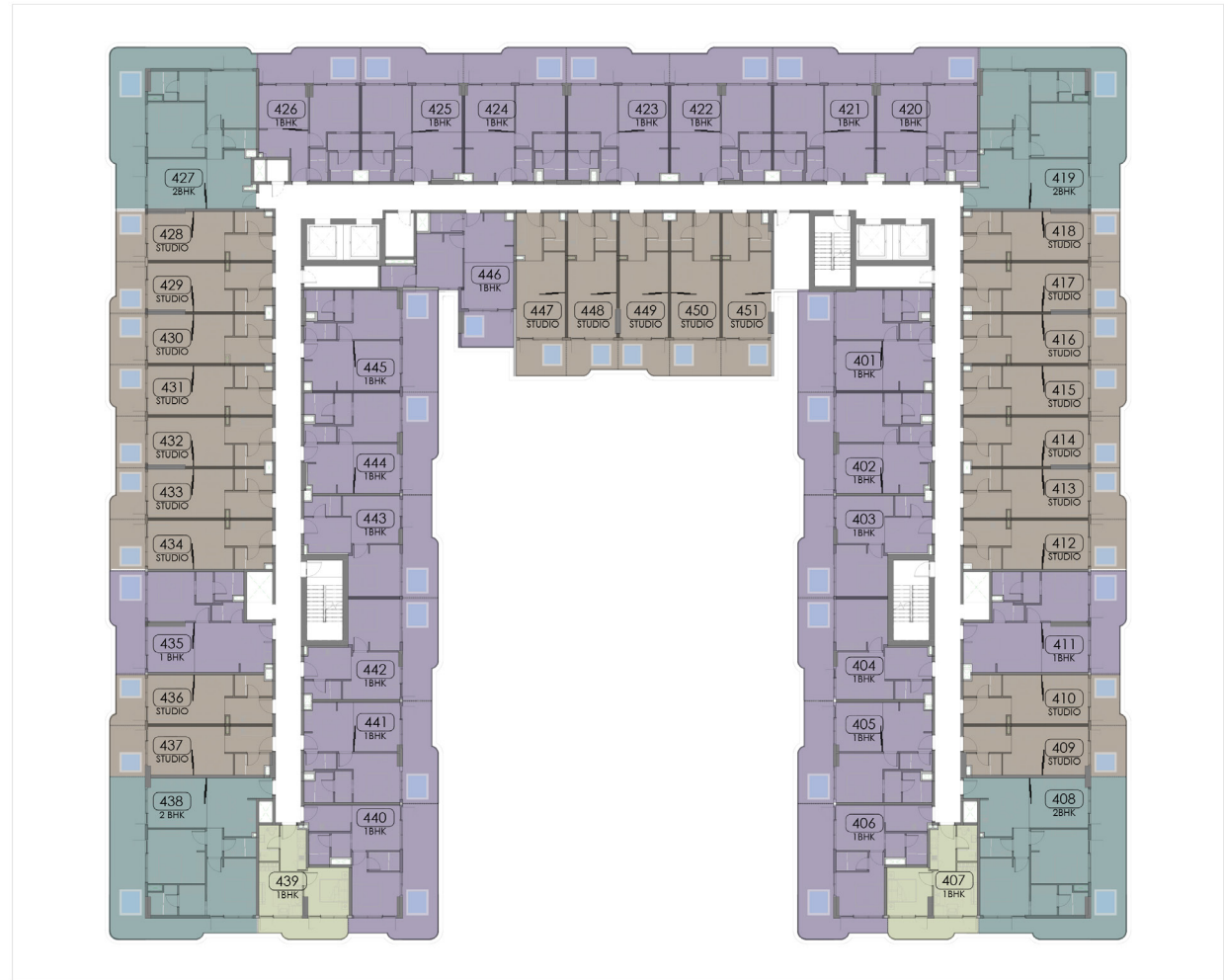
- STUDIO WITH POOL
- 1 BEDROOM WITH POOL
- 1 BEDROOM WITHOUT POOL
- 2 BEDROOM WITH POOL



4th Floor Plan  
Key Plan

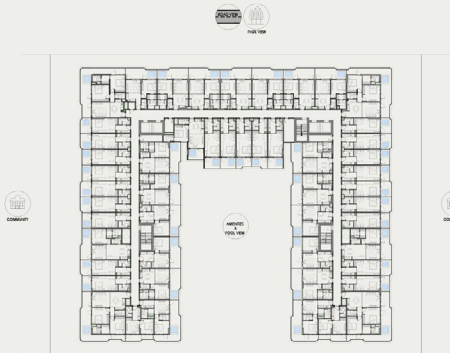


- FEATURES
- CONVERTIBLE UNITS



# 5<sup>th</sup> FLOOR PLAN

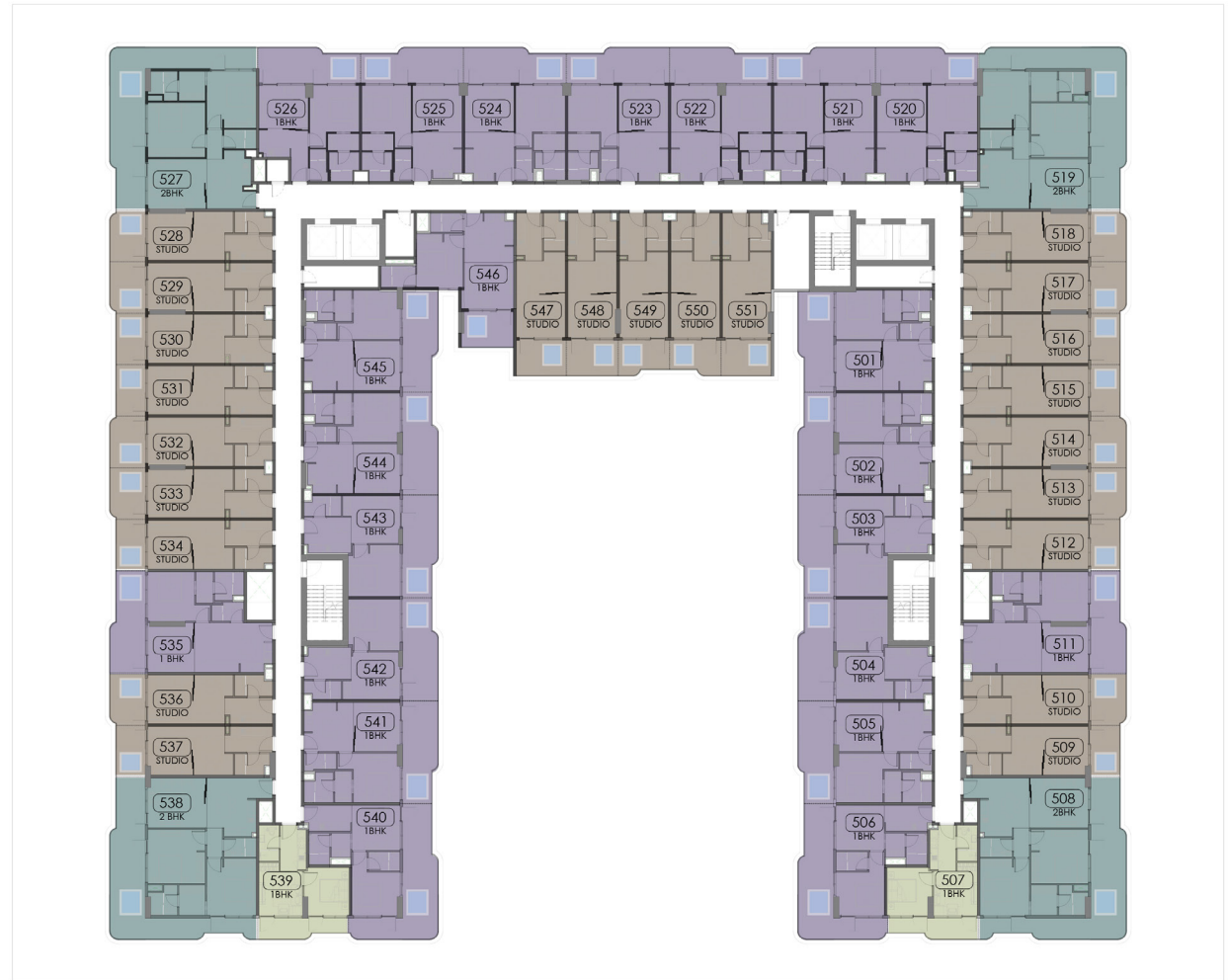
- STUDIO WITH POOL
- 1 BEDROOM WITH POOL
- 1 BEDROOM WITHOUT POOL
- 2 BEDROOM WITH POOL



5th Floor Plan  
Key Plan

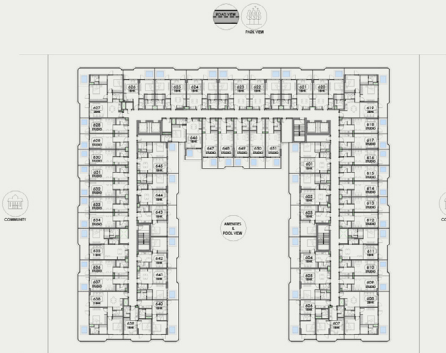


- FEATURES
- CONVERTIBLE UNITS



# 6<sup>th</sup> FLOOR PLAN

- STUDIO WITH POOL
- 1 BEDROOM WITH POOL
- 1 BEDROOM WITHOUT POOL
- 2 BEDROOM WITH POOL

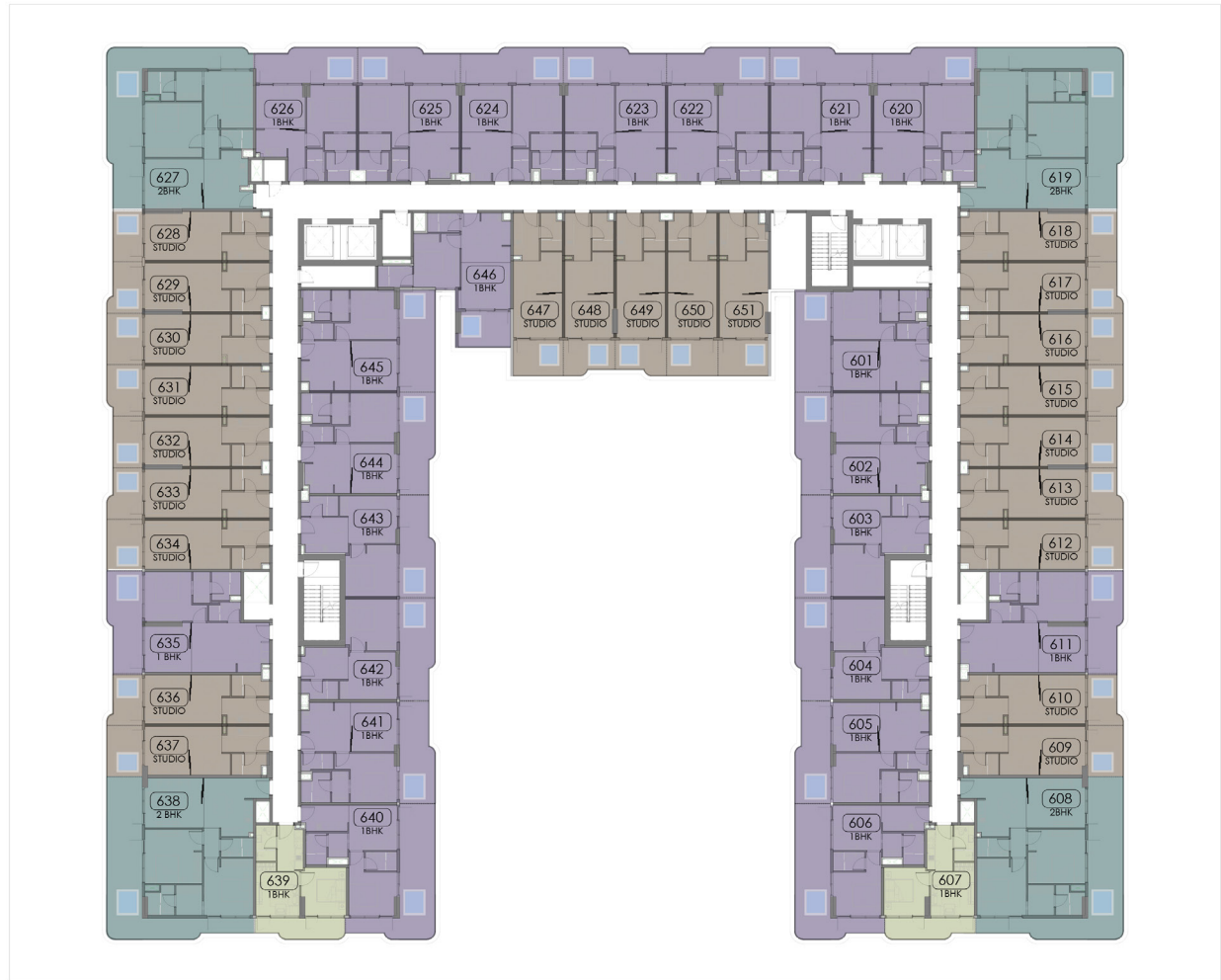


6<sup>th</sup> Floor Plan  
Key Plan



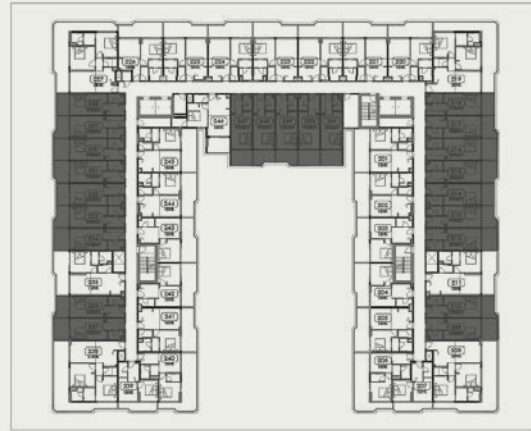
FEATURES

- CONVERTIBLE UNITS





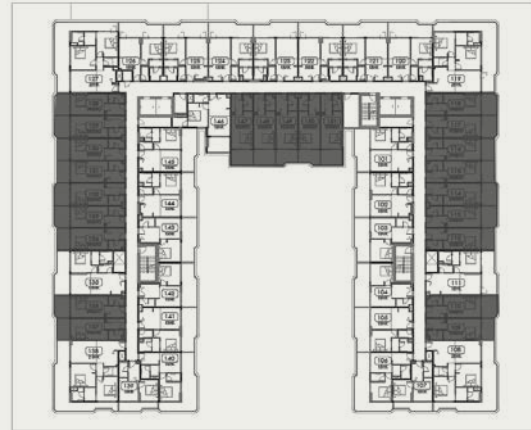
## STUDIO + POOL (TYPE 1)



### 2<sup>nd</sup>, 4<sup>th</sup>, & 6<sup>th</sup> Typical Floor

#### UNITS

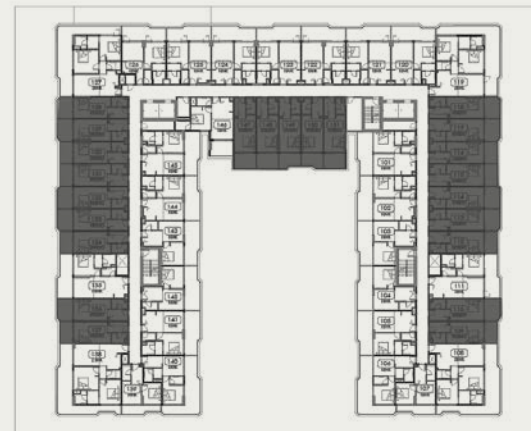
209, 210, 212, 213, 214, 215, 216, 217, 218, 228,  
229, 230, 231, 232, 233, 234, 236, 237, 247, 248,  
249, 250, 251, 409, 410, 412, 413, 414, 415, 416,  
417, 418, 428, 429, 430, 431, 432, 433, 434, 436,  
437, 447, 448, 449, 450, 451, 609, 610, 612, 613,  
614, 615, 616, 617, 618, 628, 629, 630, 631, 632,  
633, 634, 636, 637, 647, 648, 649, 650, 651



### 1<sup>st</sup>, 3<sup>rd</sup>, & 5<sup>th</sup> Typical Floor

#### UNITS

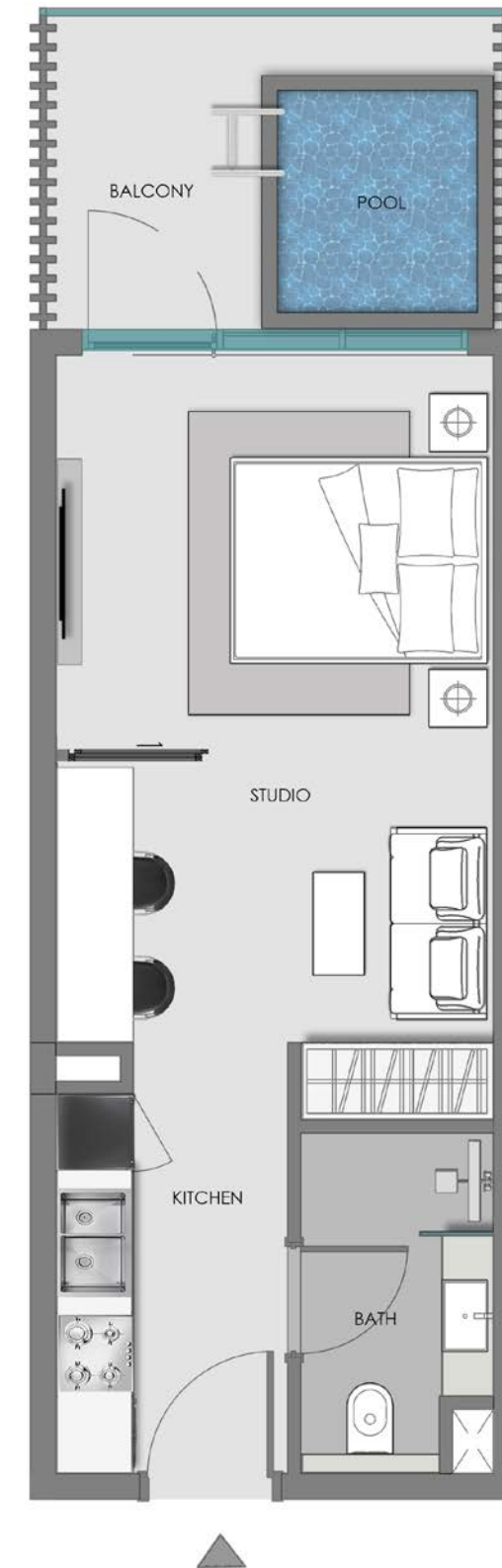
109, 110, 112, 113, 114, 115, 116, 117, 118, 128,  
129, 130, 131, 132, 133, 134, 136, 137, 147, 148,  
149, 150, 151, 309, 310, 312, 313, 314, 315, 316,  
317, 318, 328, 329, 330, 331, 332, 333, 334, 336,  
337, 347, 348, 349, 350, 351, 509, 510, 512, 513,  
514, 515, 516, 517, 518, 528, 529, 530, 531, 532,  
533, 534, 536, 537, 547, 548, 549, 550, 551



### Ground Floor

#### UNITS

G09, G10, G12, G13, G14, G15,  
G16, G17, G18, G21, G22, G23,  
G24, G25, G26, G27, G29, G30



#### Disclaimer:

1. All room dimensions are measured to structural elements and exclude wall finishes and construction tolerances.
2. All dimensions have been provided by our consultant architects.
3. All materials, dimensions and drawings are approximate. Information is subject to change without notice.
4. Actual suite area may vary from the stated area. Drawings not to scale. The developer reserves the right to make revisions.
5. For each unit type, unit sizes and details might be slightly different. Please refer to the sales and purchase agreement for the actual size of each specific unit.
6. North direction as per the Keyplan

Features:  
Convertible Units

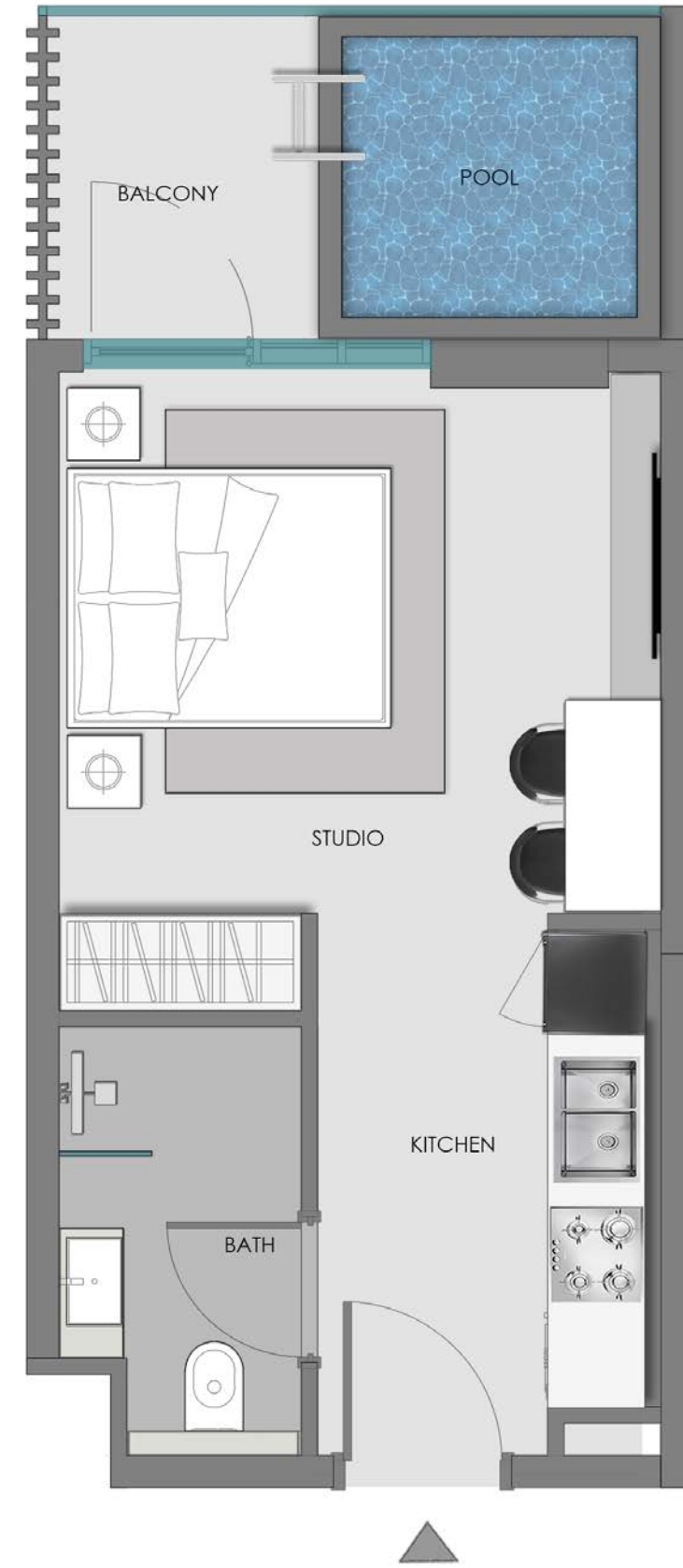


## STUDIO + POOL (TYPE 2)



Ground Floor

UNITS  
G04, G35

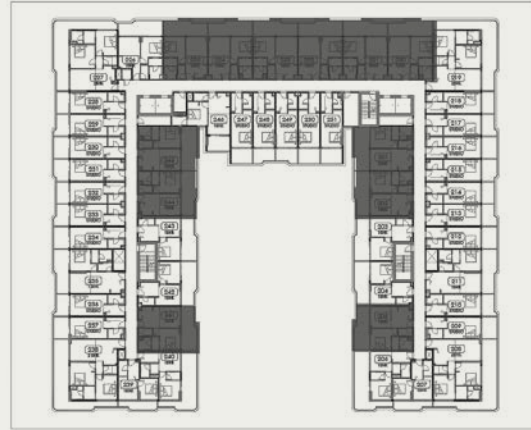


### Disclaimer:

1. All room dimensions are measured to structural elements and exclude wall finishes and construction tolerances.
2. All dimensions have been provided by our consultant architects.
3. All materials, dimensions and drawings are approximate. Information is subject to change without notice.
4. Actual suite area may vary from the stated area. Drawings not to scale. The developer reserves the right to make revisions.
5. For each unit type, unit sizes and details might be slightly different. Please refer to the sales and purchase agreement for the actual size of each specific unit.
6. North direction as per the Keyplan



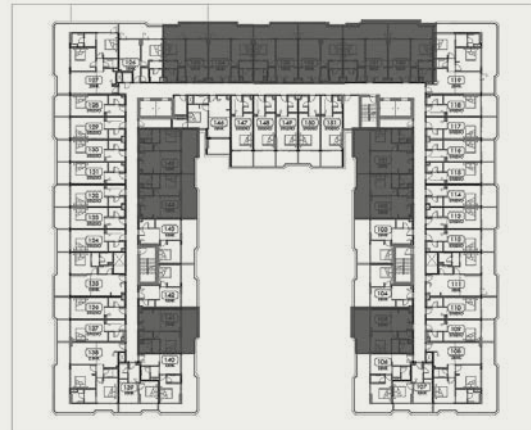
# 1 BEDROOM + POOL (TYPE 1)



2<sup>nd</sup>, 4<sup>th</sup>, & 6<sup>th</sup> Typical Floor

**UNITS**

201, 202, 205, 220, 221, 222,  
223, 224, 225, 241, 244, 245,  
401, 402, 405, 420, 421, 422,  
423, 424, 425, 441, 444, 445,  
601, 602, 605, 620, 621, 622,  
623, 624, 625, 641, 644, 645



1<sup>st</sup>, 3<sup>rd</sup>, & 5<sup>th</sup> Typical Floor

**UNITS**

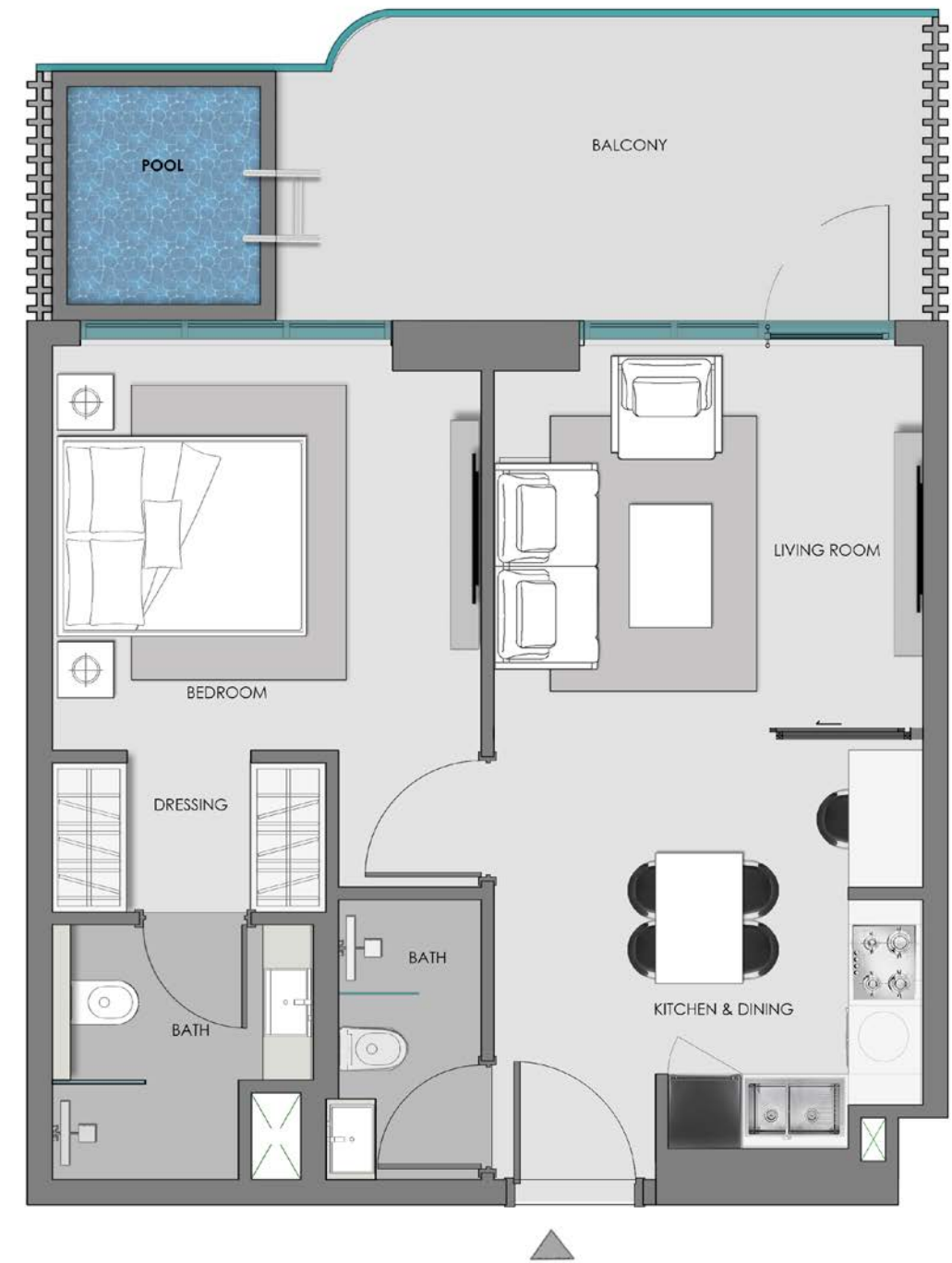
101, 102, 105, 120, 121, 122,  
123, 124, 125, 141, 144, 145,  
301, 302, 305, 320, 321, 322,  
323, 324, 325, 341, 344, 345,  
501, 502, 505, 520, 521, 522,  
523, 524, 525, 541, 544, 545



Ground Floor

**UNITS**

G01, G02, G05, G20,  
G34, G37, G38



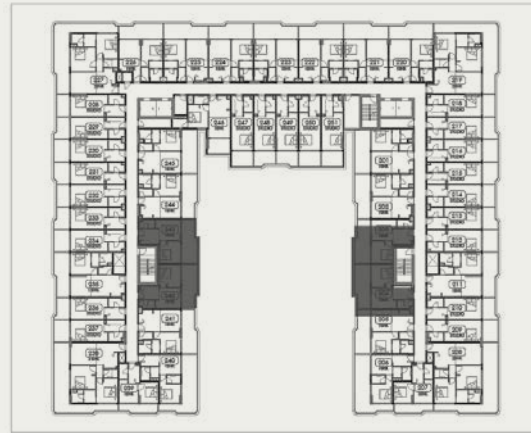
**Disclaimer:**

1. All room dimensions are measured to structural elements and exclude wall finishes and construction tolerances.
2. All dimensions have been provided by our consultant architects.
3. All materials, dimensions and drawings are approximate. Information is subject to change without notice.
4. Actual suite area may vary from the stated area. Drawings not to scale. The developer reserves the right to make revisions.
5. For each unit type, unit sizes and details might be slightly different. Please refer to the sales and purchase agreement for the actual size of each specific unit.
6. North direction as per the Keyplan

Features:  
Convertible Units



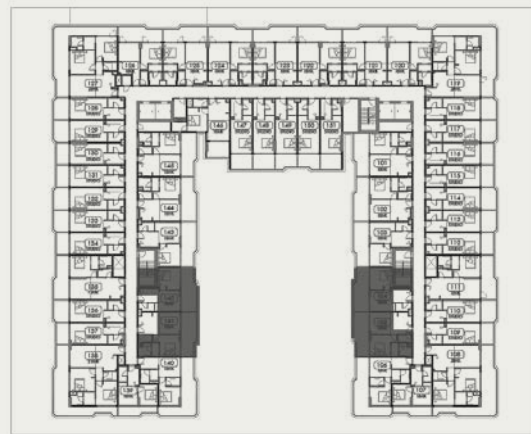
## 1 BEDROOM + POOL (TYPE 2)



2<sup>nd</sup>, 4<sup>th</sup>, & 6<sup>th</sup> Typical Floor

**UNITS**

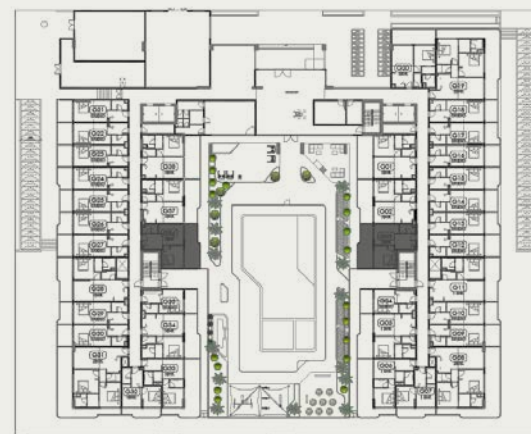
203, 204, 242, 243  
 403, 404, 442, 443  
 603, 604, 642, 643



1<sup>st</sup>, 3<sup>rd</sup>, & 5<sup>th</sup> Typical Floor

**UNITS**

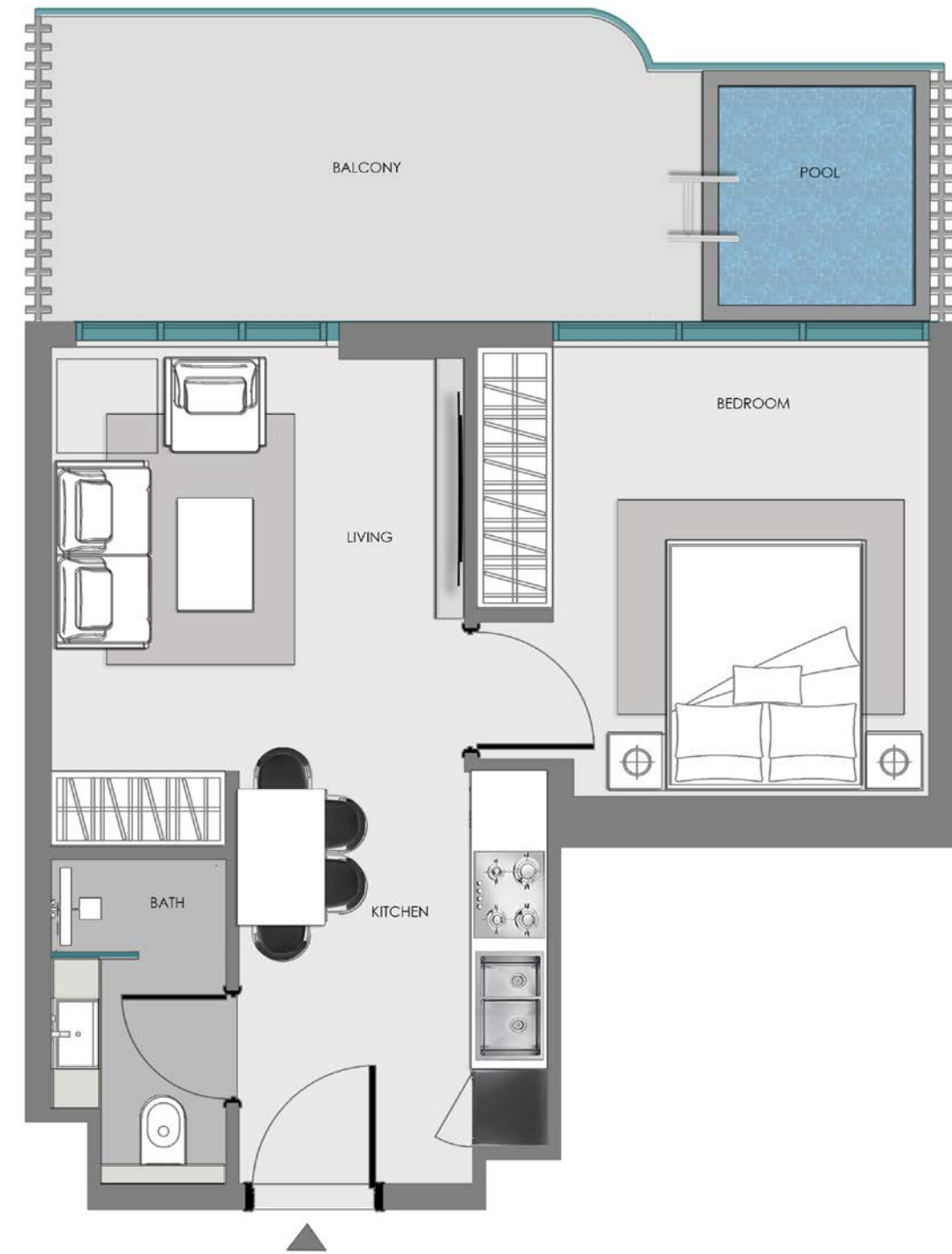
103, 104, 142, 143  
 303, 304, 342, 343  
 503, 504, 542, 543



Ground Floor

**UNITS**

G03, G36

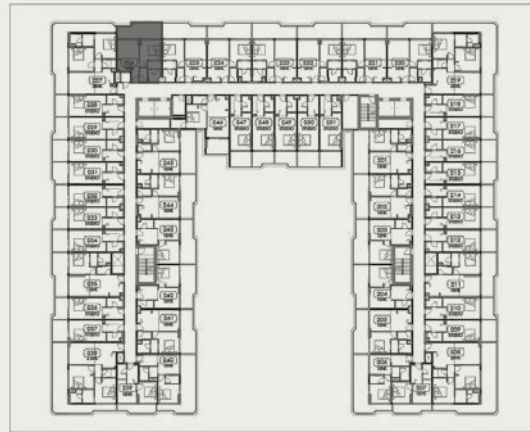


**Disclaimer:**

1. All room dimensions are measured to structural elements and exclude wall finishes and construction tolerances.
2. All dimensions have been provided by our consultant architects.
3. All materials, dimensions and drawings are approximate. Information is subject to change without notice.
4. Actual suite area may vary from the stated area. Drawings not to scale. The developer reserves the right to make revisions.
5. For each unit type, unit sizes and details might be slightly different. Please refer to the sales and purchase agreement for the actual size of each specific unit.
6. North direction as per the Keyplan

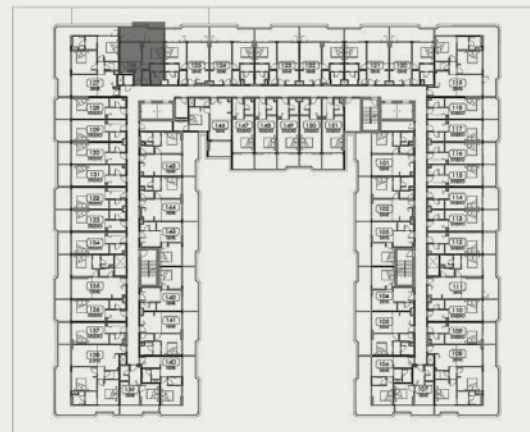


# 1 BEDROOM + POOL (TYPE 3)



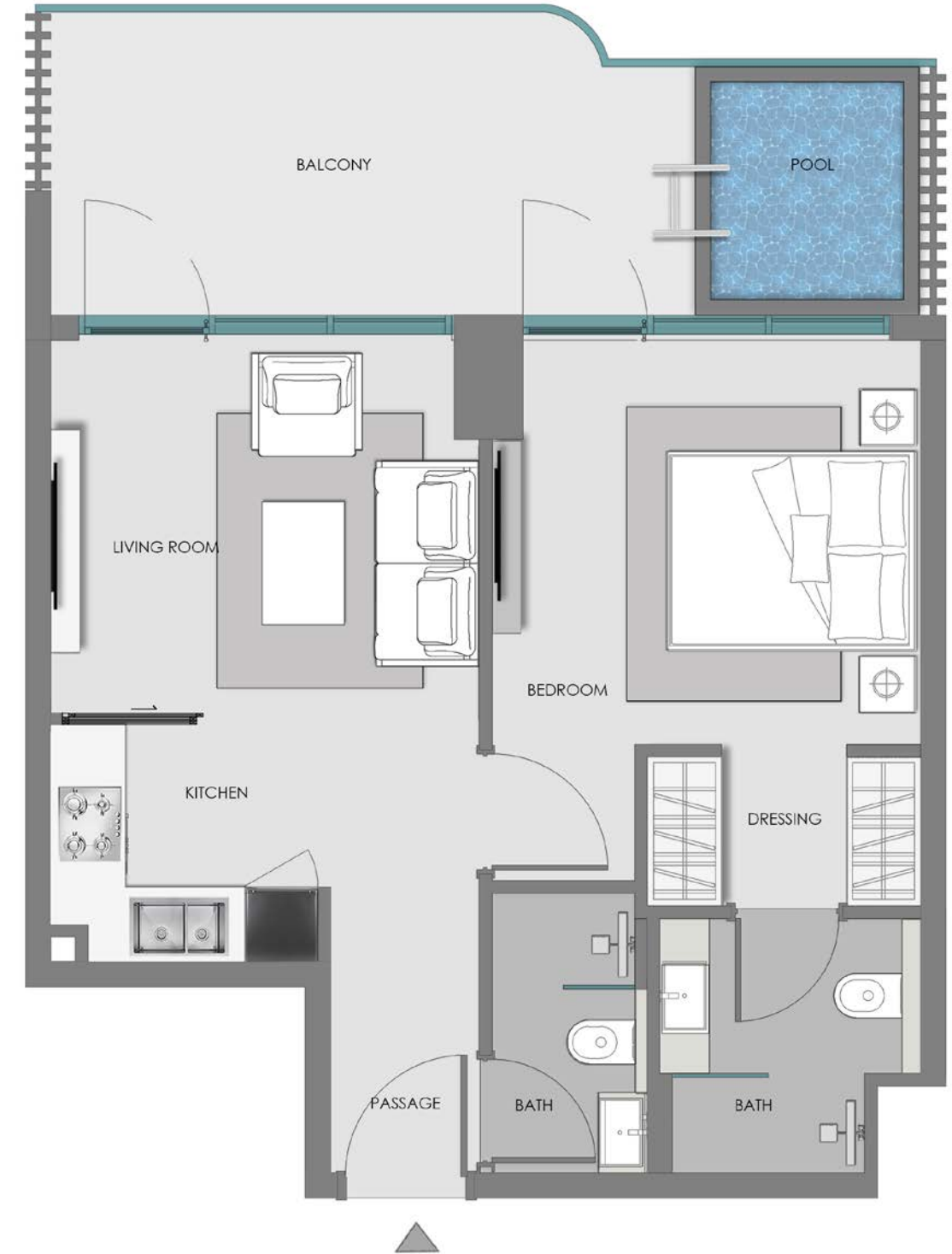
2<sup>nd</sup>, 4<sup>th</sup>, & 6<sup>th</sup> Typical Floor

UNITS  
226, 426, 626



1<sup>st</sup>, 3<sup>rd</sup>, & 5<sup>th</sup> Typical Floor

UNITS  
126, 326, 526



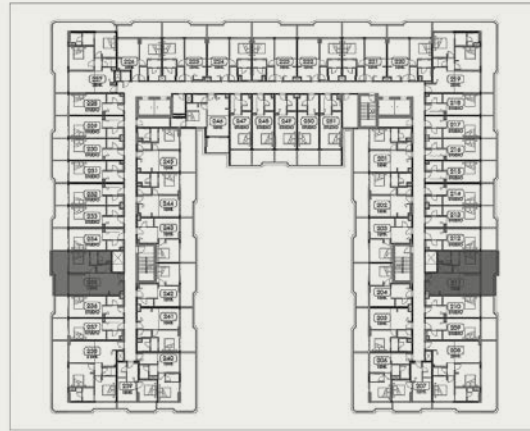
**Disclaimer:**

1. All room dimensions are measured to structural elements and exclude wall finishes and construction tolerances.
2. All dimensions have been provided by our consultant architects.
3. All materials, dimensions and drawings are approximate. Information is subject to change without notice.
4. Actual suite area may vary from the stated area. Drawings not to scale. The developer reserves the right to make revisions.
5. For each unit type, unit sizes and details might be slightly different. Please refer to the sales and purchase agreement for the actual size of each specific unit.
6. North direction as per the Keyplan

Features:  
Convertible Units

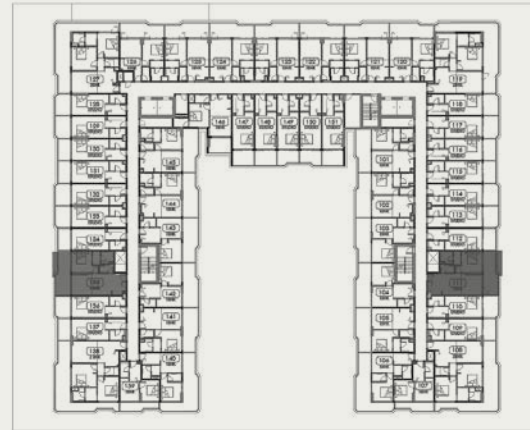


# 1 BEDROOM + POOL (TYPE 4)



2<sup>nd</sup>, 4<sup>th</sup>, & 6<sup>th</sup> Typical Floor

- UNITS  
 235, 211  
 435, 411  
 635, 611



1<sup>st</sup>, 3<sup>rd</sup>, & 5<sup>th</sup> Typical Floor

- UNITS  
 135, 111,  
 335, 311,  
 535, 511



Ground Floor

- UNITS  
 G28, G11



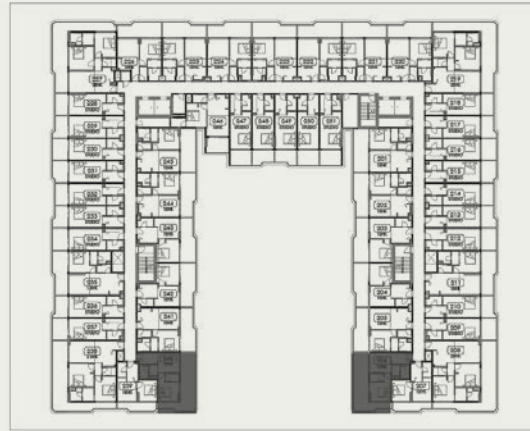
**Disclaimer:**

1. All room dimensions are measured to structural elements and exclude wall finishes and construction tolerances.
2. All dimensions have been provided by our consultant architects.
3. All materials, dimensions and drawings are approximate. Information is subject to change without notice.
4. Actual suite area may vary from the stated area. Drawings not to scale. The developer reserves the right to make revisions.
5. For each unit type, unit sizes and details might be slightly different. Please refer to the sales and purchase agreement for the actual size of each specific unit.
6. North direction as per the Keyplan

Features:  
 Convertible Units



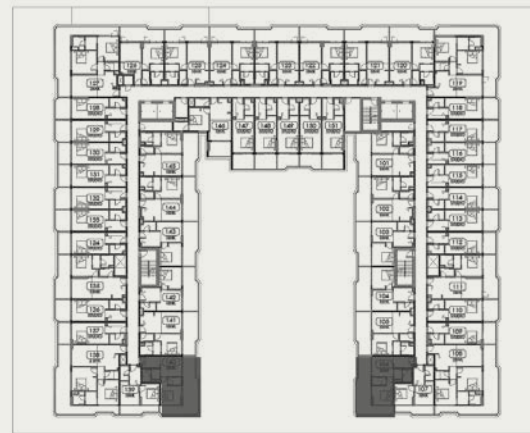
# 1 BEDROOM + POOL (TYPE 5)



2<sup>nd</sup>, 4<sup>th</sup>, & 6<sup>th</sup> Typical Floor

**UNITS**

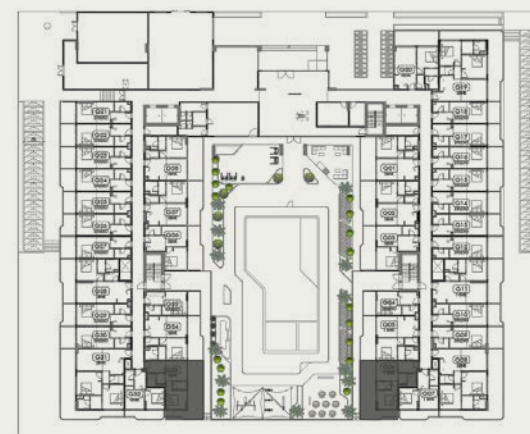
- 235, 211,
- 435, 411,
- 635, 611



1<sup>st</sup>, 3<sup>rd</sup>, & 5<sup>th</sup> Typical Floor

**UNITS**

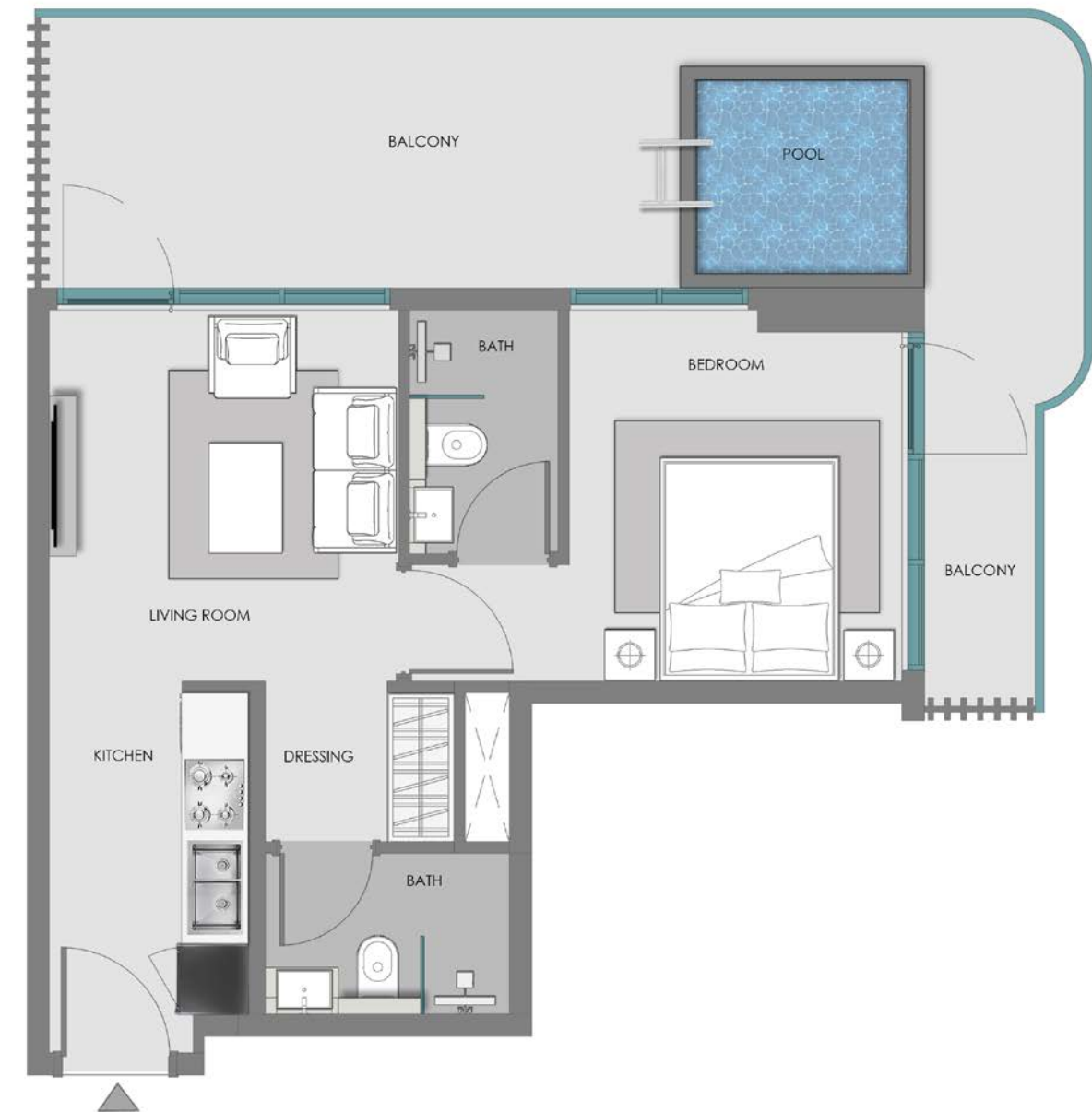
- 135, 111,
- 335, 311,
- 535, 511



Ground Floor

**UNITS**

- G28, G11



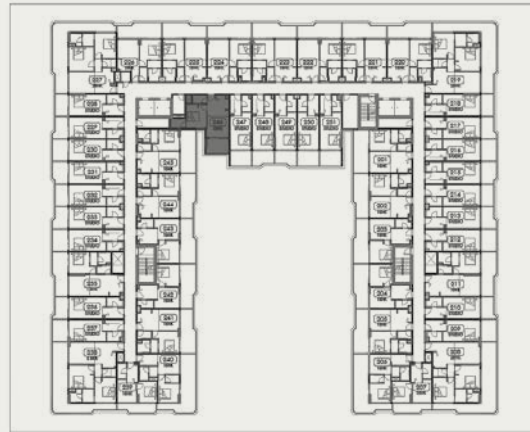
**Disclaimer:**

1. All room dimensions are measured to structural elements and exclude wall finishes and construction tolerances.
2. All dimensions have been provided by our consultant architects.
3. All materials, dimensions and drawings are approximate. Information is subject to change without notice.
4. Actual suite area may vary from the stated area. Drawings not to scale. The developer reserves the right to make revisions.
5. For each unit type, unit sizes and details might be slightly different. Please refer to the sales and purchase agreement for the actual size of each specific unit.
6. North direction as per the Keyplan

Features:  
Convertible Units



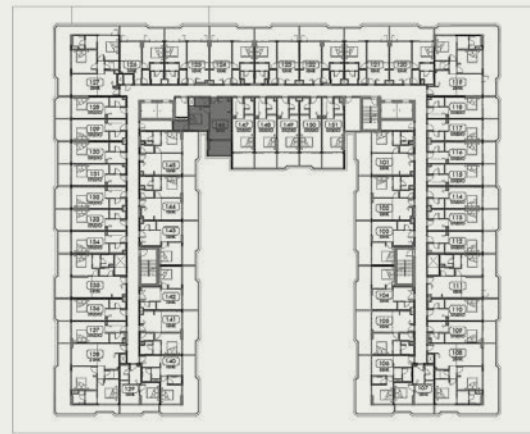
# 1 BEDROOM + POOL (TYPE 6)



2<sup>nd</sup>, 4<sup>th</sup>, & 6<sup>th</sup> Typical Floor

UNITS

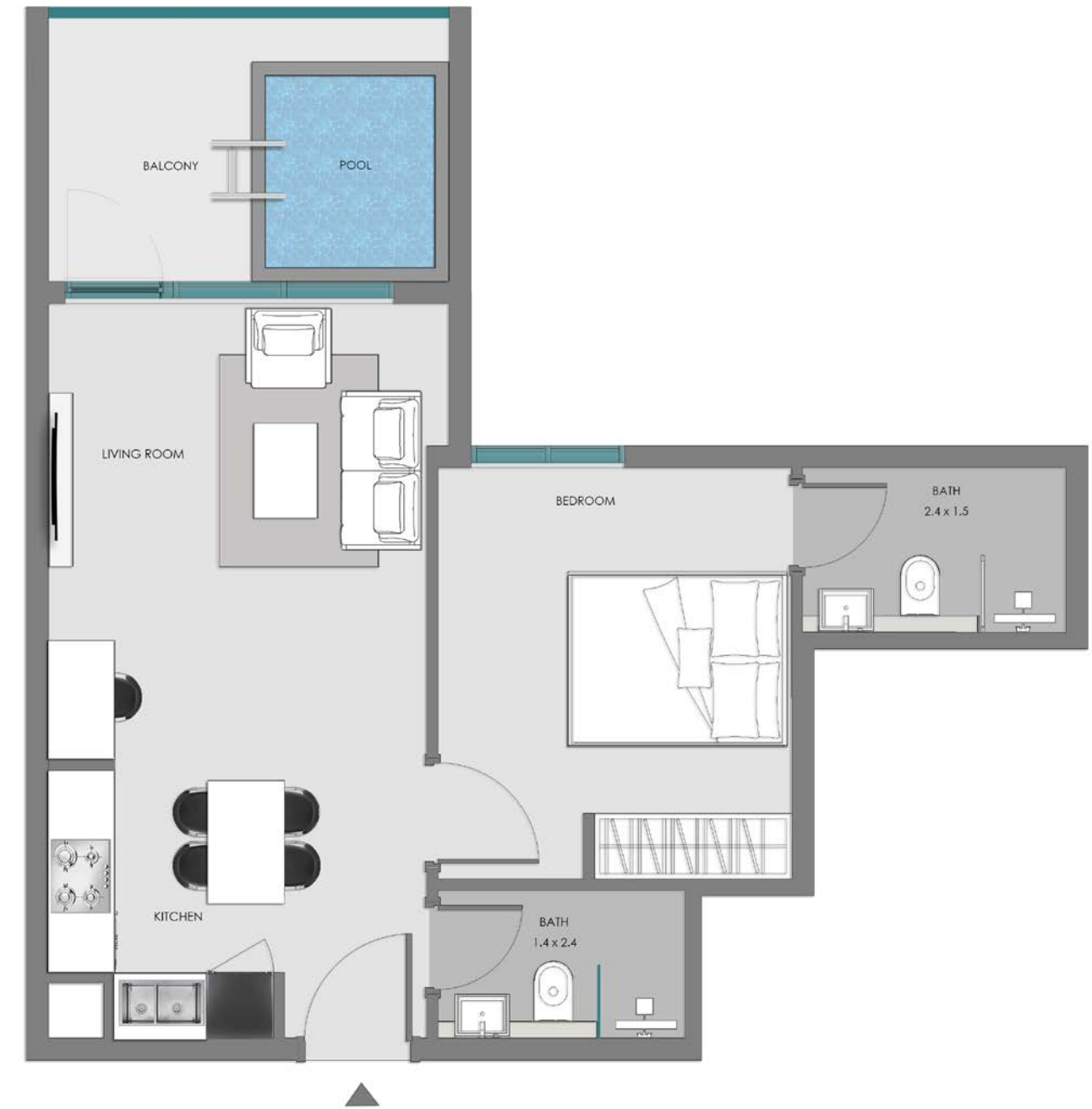
246, 464, 646



1<sup>st</sup>, 3<sup>rd</sup>, & 5<sup>th</sup> Typical Floor

UNITS

146, 346, 546



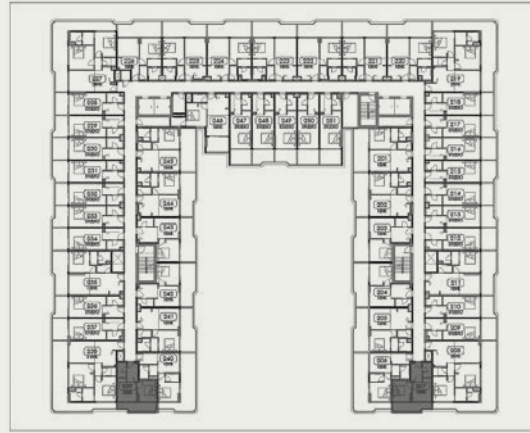
**Disclaimer:**

1. All room dimensions are measured to structural elements and exclude wall finishes and construction tolerances.
2. All dimensions have been provided by our consultant architects.
3. All materials, dimensions and drawings are approximate. Information is subject to change without notice.
4. Actual suite area may vary from the stated area. Drawings not to scale. The developer reserves the right to make revisions.
5. For each unit type, unit sizes and details might be slightly different. Please refer to the sales and purchase agreement for the actual size of each specific unit.
6. North direction as per the Keyplan





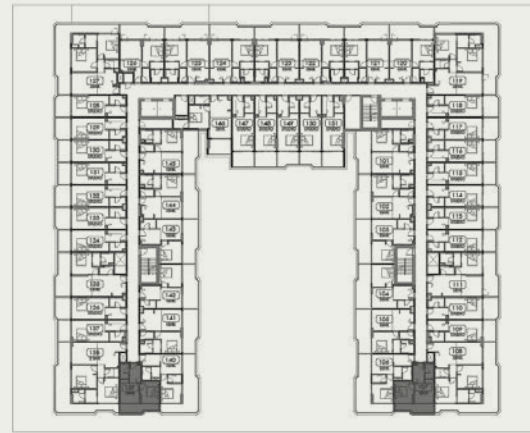
# 1 BEDROOM (TYPE 7)



2<sup>nd</sup>, 4<sup>th</sup>, & 6<sup>th</sup> Typical Floor

**UNITS**

207, 239, 407, 439, 607, 639



1<sup>st</sup>, 3<sup>rd</sup>, & 5<sup>th</sup> Typical Floor

**UNITS**

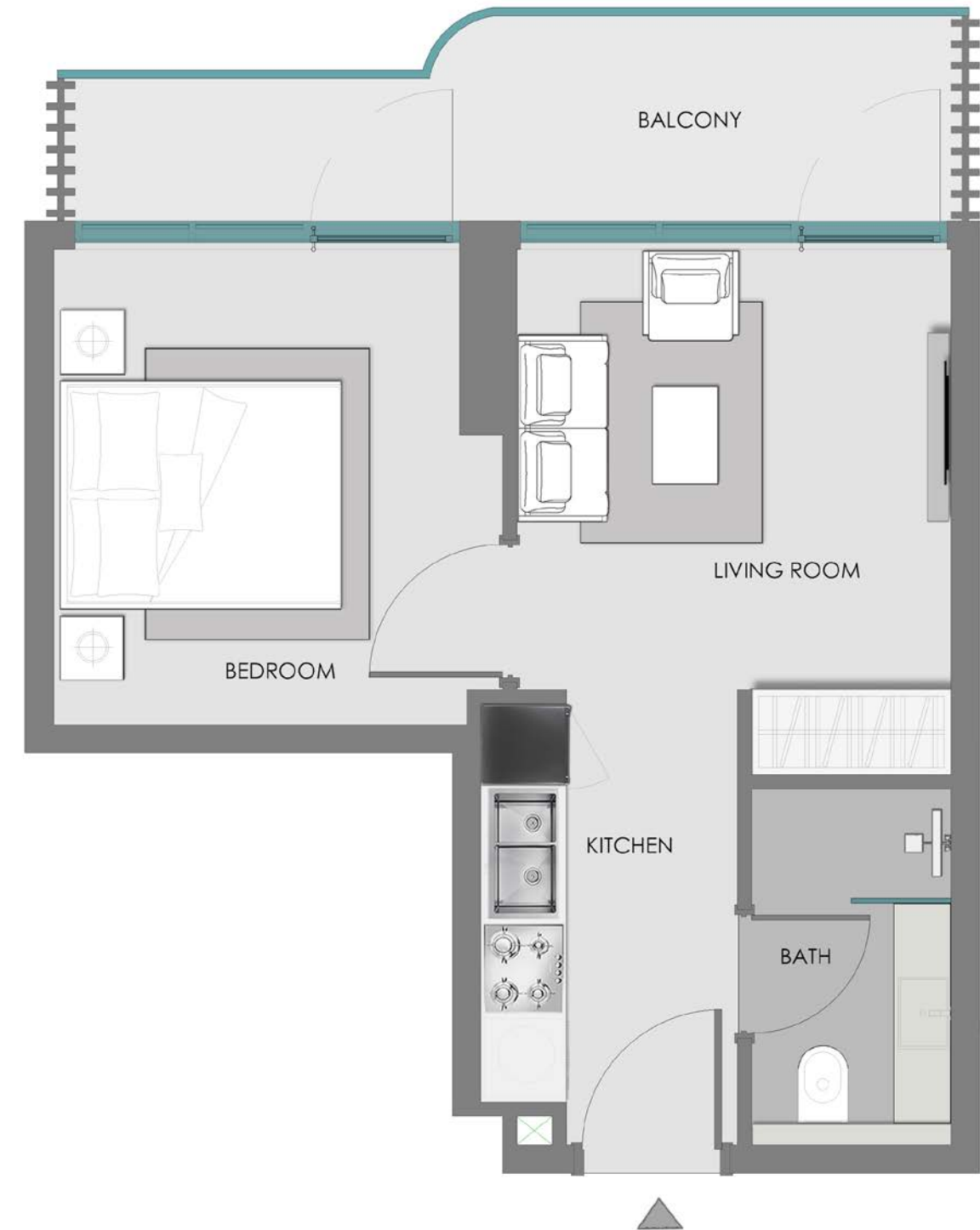
107, 139, 307, 339, 507, 539



Ground Floor

**UNITS**

G07, G32

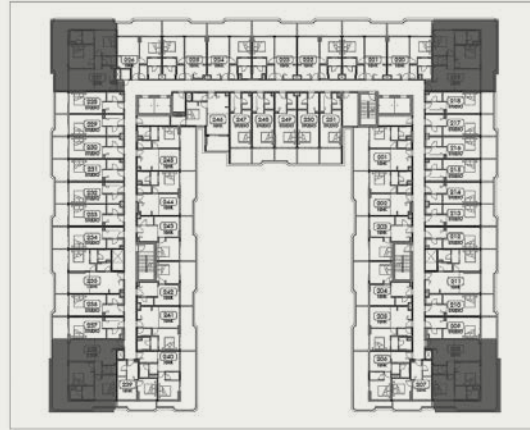


**Disclaimer:**

1. All room dimensions are measured to structural elements and exclude wall finishes and construction tolerances.
2. All dimensions have been provided by our consultant architects.
3. All materials, dimensions and drawings are approximate. Information is subject to change without notice.
4. Actual suite area may vary from the stated area. Drawings not to scale. The developer reserves the right to make revisions.
5. For each unit type, unit sizes and details might be slightly different. Please refer to the sales and purchase agreement for the actual size of each specific unit.
6. North direction as per the Keyplan



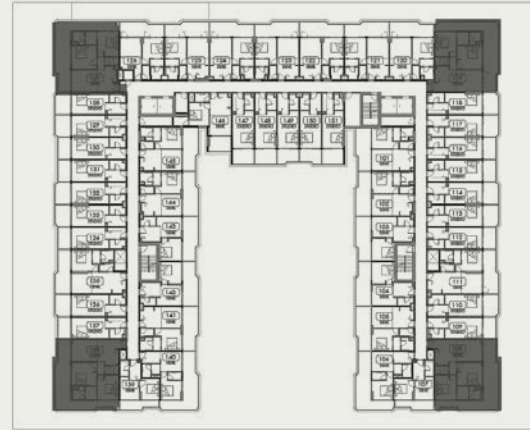
## 2 BEDROOM + POOL



2<sup>nd</sup>, 4<sup>th</sup>, & 6<sup>th</sup> Typical Floor

### UNITS

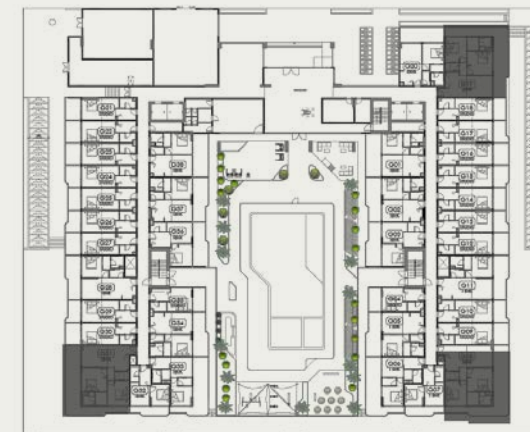
208, 219, 227, 238,  
408, 419, 427, 438  
608, 619, 627, 638



1<sup>st</sup>, 3<sup>rd</sup>, & 5<sup>th</sup> Typical Floor

### UNITS

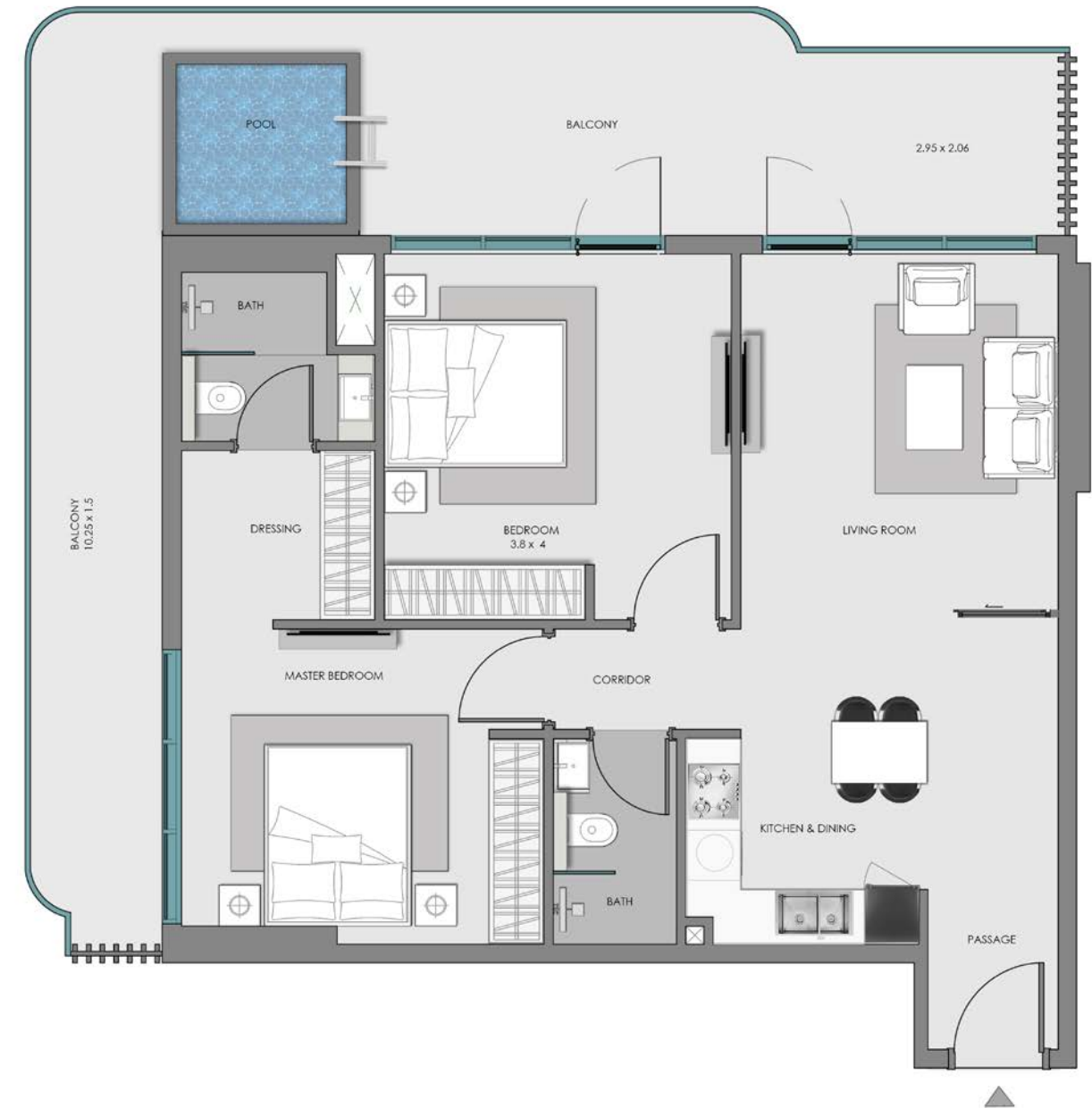
108, 119, 127, 138  
308, 319, 327, 338  
508, 519, 527, 538



Ground Floor

### UNITS

G08, G19, G31



### Disclaimer:

1. All room dimensions are measured to structural elements and exclude wall finishes and construction tolerances.
2. All dimensions have been provided by our consultant architects.
3. All materials, dimensions and drawings are approximate. Information is subject to change without notice.
4. Actual suite area may vary from the stated area. Drawings not to scale. The developer reserves the right to make revisions.
5. For each unit type, unit sizes and details might be slightly different. Please refer to the sales and purchase agreement for the actual size of each specific unit.
6. North direction as per the Keyplan

Features:  
Convertible Units

