

# Masterplan

	UNITS
4 to 6 Bedroom Villa 5 Bedroom Villa	3
4 Bedroom Villa	7
3 Bedroom Villa	16
<b>TOTAL UNITS</b>	<b>26</b>

## THE COMPLEX

- Cafe
- Entrance Gate
- Private Ring Road
- The Wellness Centre
- High-End Gym
- Communal Bathhouse
- The Core
- EV Charging Stations



## 5 BEDROOM

11

### Building Area

322 m<sup>2</sup>

### Net Land Area

522 m<sup>2</sup>

### Semi-Gross Land Area

561 m<sup>2</sup>

### Swimming Pool Area

30 m<sup>2</sup>

### Parking Area

55 m<sup>2</sup>

### Bedroom

5

### Bathroom

5

### Key Features

- Former Golf Course view
- Large Land Plot Size
- Attractive Entry Price
- Private Corner Unit

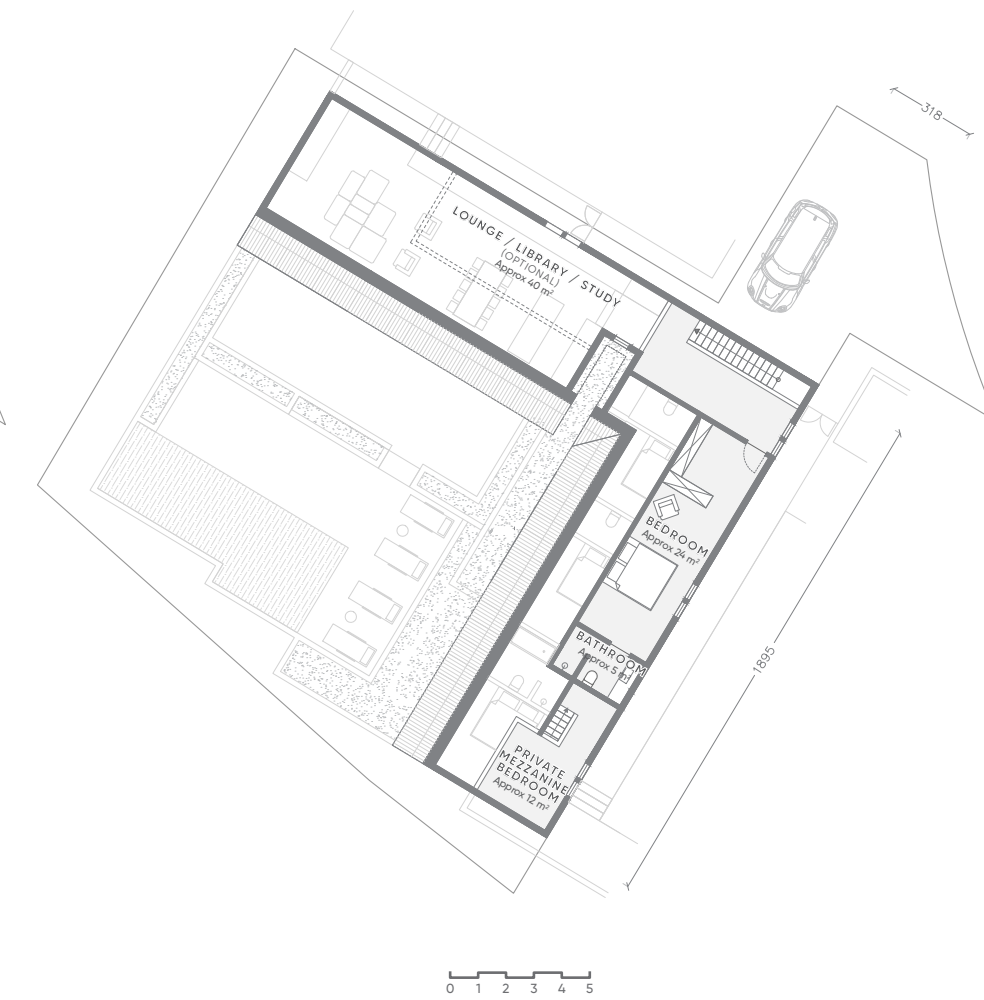


## 5 BEDROOM

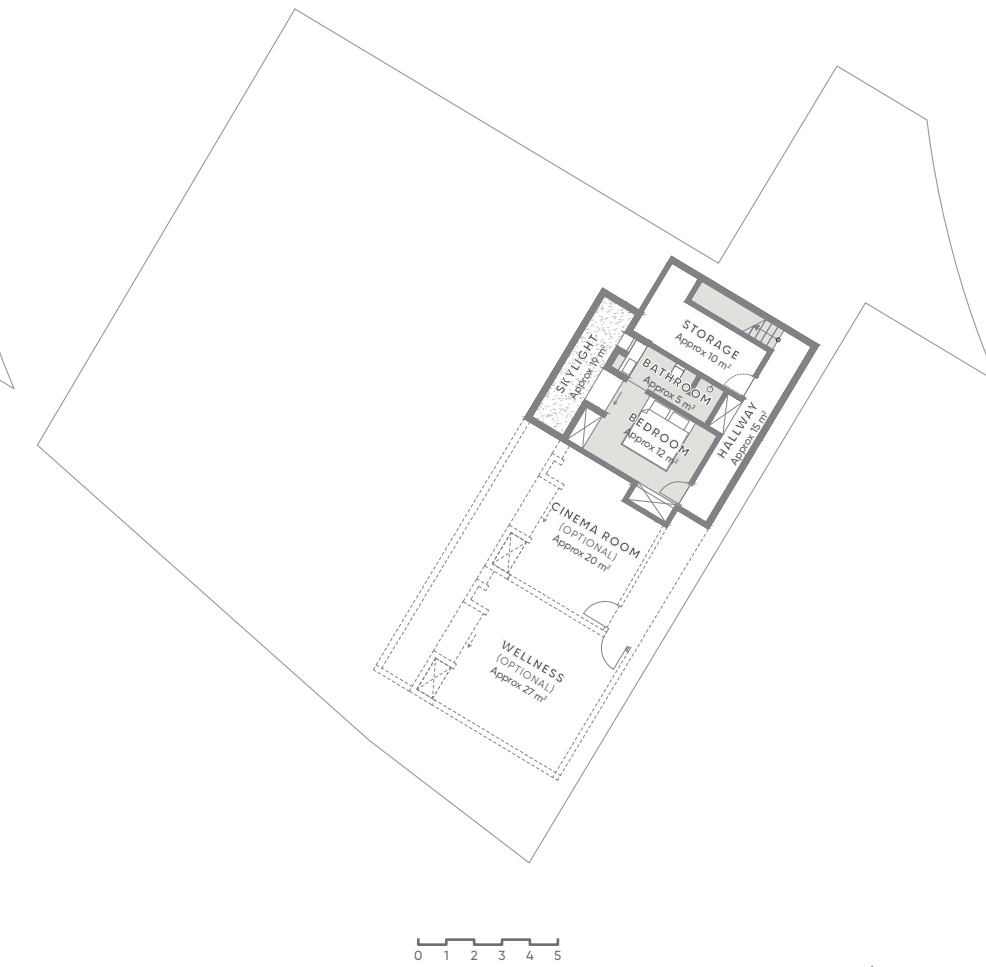
11



Ground Floor



Second Floor



Basement Floor



## 5 BEDROOM

15

### Building Area

333 m<sup>2</sup>

### Net Land Area

460 m<sup>2</sup>

### Semi-Gross Land Area

495 m<sup>2</sup>

### Swimming Pool Area

18 m<sup>2</sup>

### Parking Area

35 m<sup>2</sup>

### Bedroom

5

### Bathroom

5

### Key Features

- Spacious 5BR Building
- Attractive Price per Sqm
- Direct Wellness Access



## 5 BEDROOM

15



## 5 BEDROOM

17

### Building Area

322 m<sup>2</sup>

### Net Land Area

511 m<sup>2</sup>

### Semi-Gross Land Area

549 m<sup>2</sup>

### Swimming Pool Area

30 m<sup>2</sup>

### Parking Area

55 m<sup>2</sup>

### Bedroom

5

### Bathroom

5

### Key Features

- Ex Golf Course view
- Large Land Plot Size
- Attractive Price per Sqm
- Attractive Entry Price
- Private Corner Unit

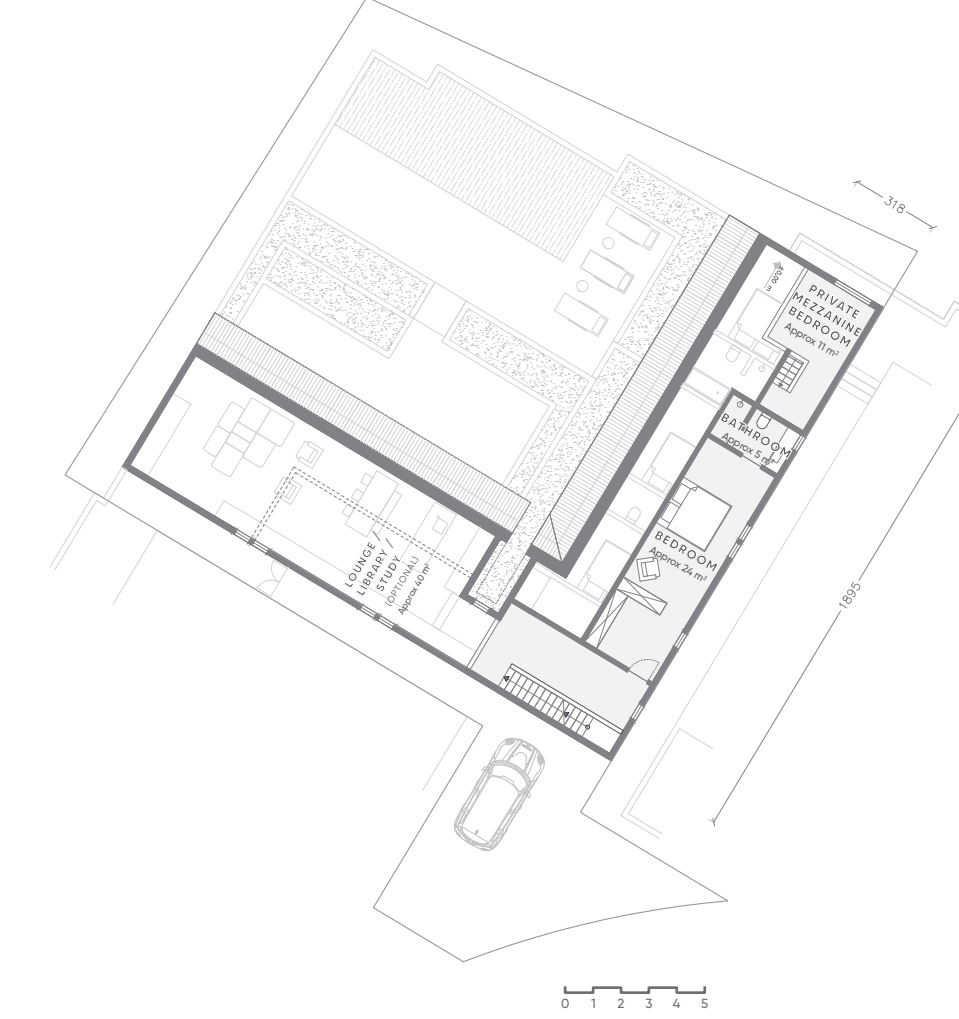


## 5 BEDROOM

17



Ground Floor



Second Floor



Basement Floor



## 5 BEDROOM

22

**Building Area**  
327 m<sup>2</sup>

**Net Land Area**  
549 m<sup>2</sup>

**Semi-Gross Land Area**  
590 m<sup>2</sup>

**Swimming Pool Area**  
30 m<sup>2</sup>

**Parking Area**  
60 m<sup>2</sup>

**Bedroom**  
5

**Bathroom**  
5

### Key Features

- Spacious 5BR Building
- Largest Land Plot Size
- Maximized Natural Light
- Seamless Indoor-Outdoor Living



## 5 BEDROOM

22



## 4 BEDROOM

08

**Building Area**  
280 m<sup>2</sup>

**Net Land Area**  
412 m<sup>2</sup>

**Semi-Gross Land Area**  
443 m<sup>2</sup>

**Swimming Pool Area**  
20 m<sup>2</sup>

**Parking Area**  
30 m<sup>2</sup>

**Bedroom**  
4

**Bathroom**  
4

### Key Features

- Attractive Price per Sqm
- Spacious 4BR Building
- Large Pool
- Direct Wellness Access

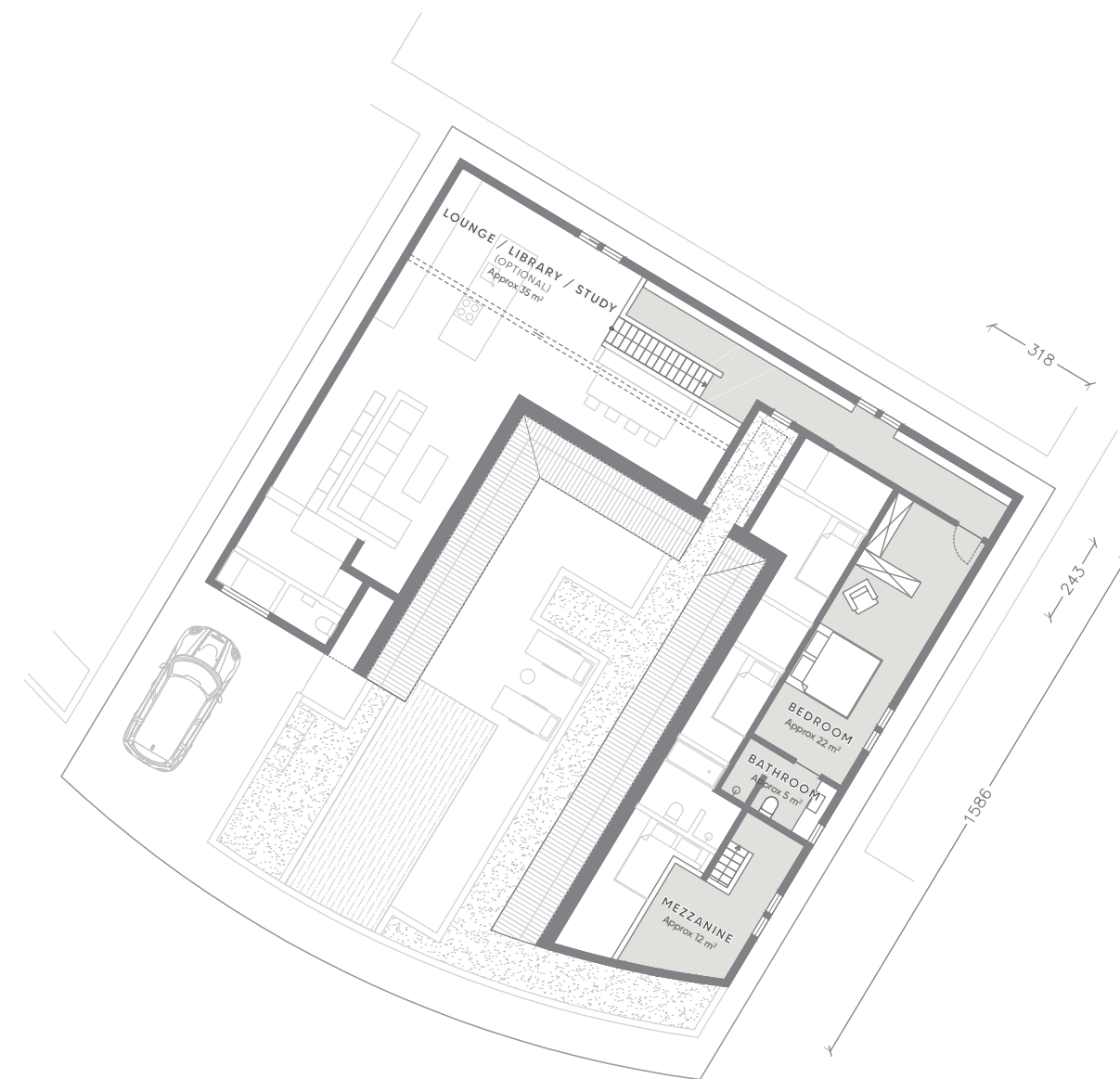


## 4 BEDROOM

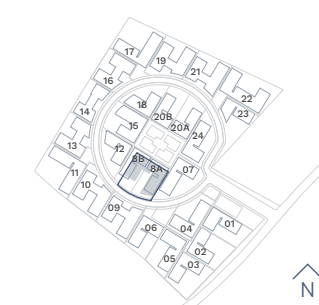
08



Ground Floor



Second Floor



## 4 BEDROOM

09

**Building Area**  
238 m<sup>2</sup>

**Net Land Area**  
405 m<sup>2</sup>

**Semi-Gross Land Area**  
436 m<sup>2</sup>

**Swimming Pool Area**  
20 m<sup>2</sup>

**Parking Area**  
30 m<sup>2</sup>

**Bedroom**  
4

**Bathroom**  
4

### Key Features

- Large Pool
- Spacious 4BR Building



## 4 BEDROOM

09



Ground Floor



Second Floor



## 4 BEDROOM

10

### Building Area

233 m<sup>2</sup>

### Net Land Area

435 m<sup>2</sup>

### Semi-Gross Land Area

468 m<sup>2</sup>

### Swimming Pool Area

19 m<sup>2</sup>

### Parking Area

35 m<sup>2</sup>

### Bedroom

4

### Bathroom

4

### Key Features

- Largest 4BR Land Plot Size
- Spacious 4BR Building

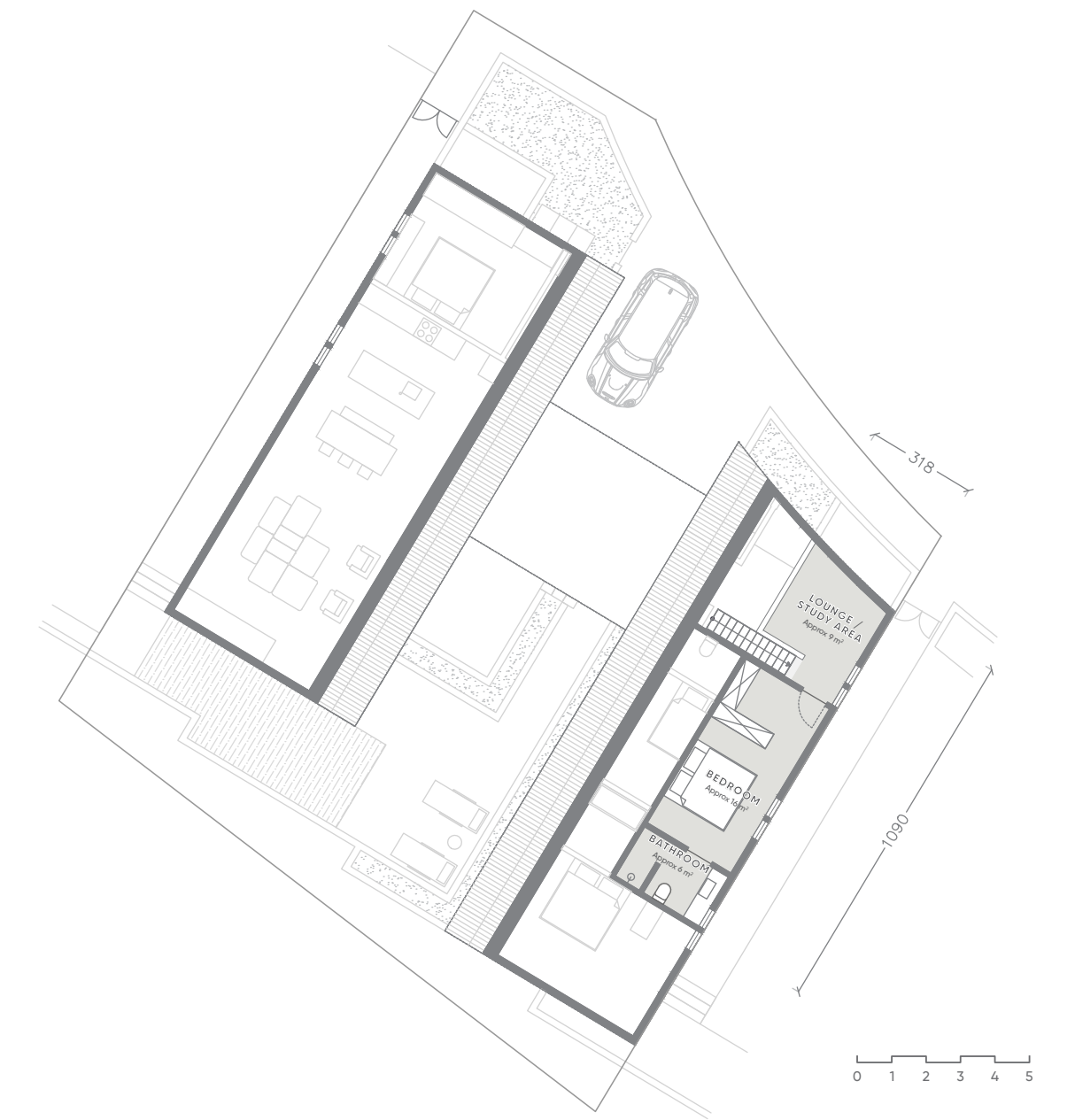


## 4 BEDROOM

10



Ground Floor



Second Floor



## 4 BEDROOM

12

### Building Area

204 m<sup>2</sup>

### Net Land Area

339 m<sup>2</sup>

### Semi-Gross Land Area

365 m<sup>2</sup>

### Swimming Pool Area

18 m<sup>2</sup>

### Parking Area

30 m<sup>2</sup>

### Bedroom

4

### Bathroom

4

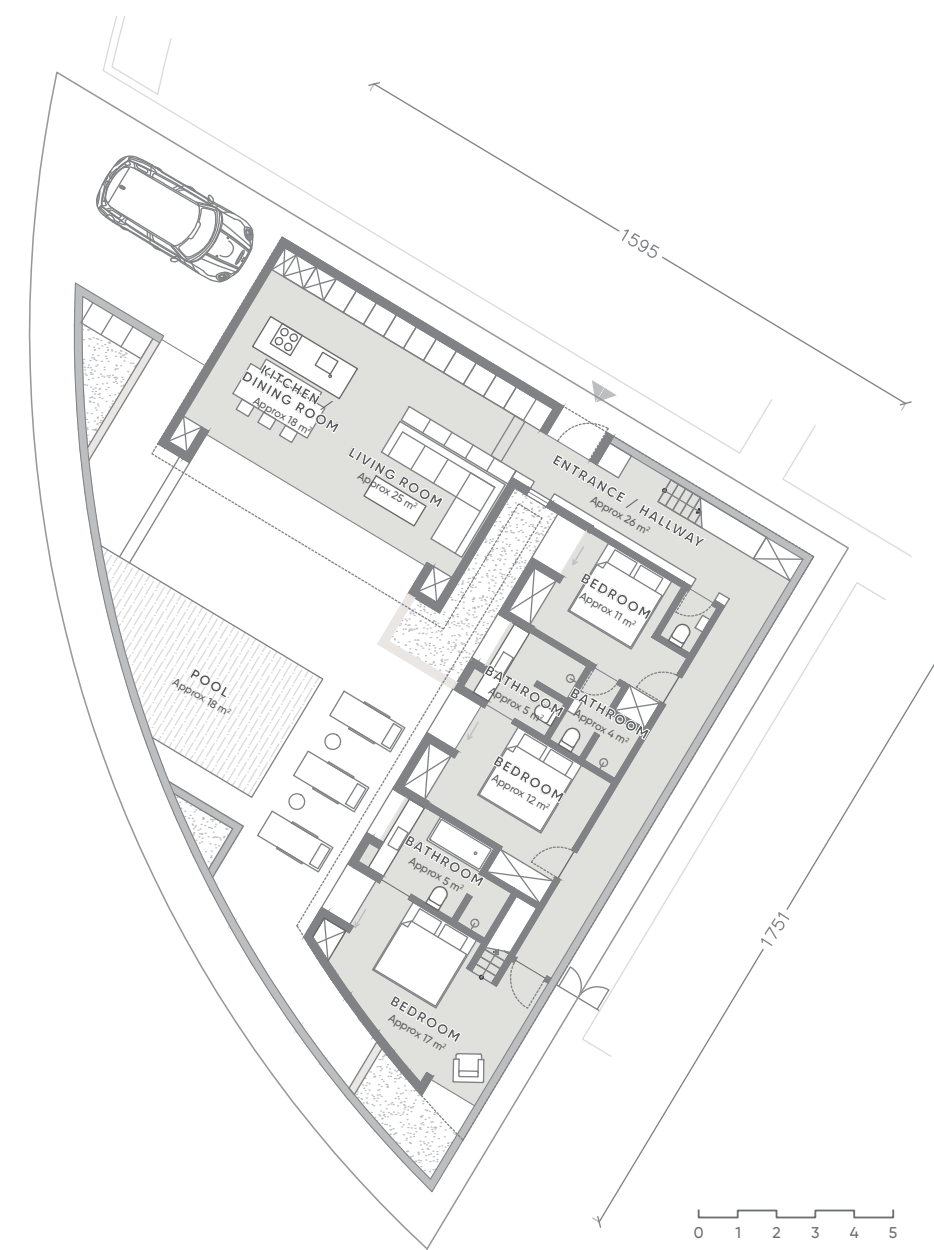
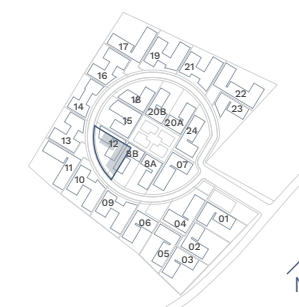
### Key Features

- Attractive Entry Price
- Direct Wellness Access

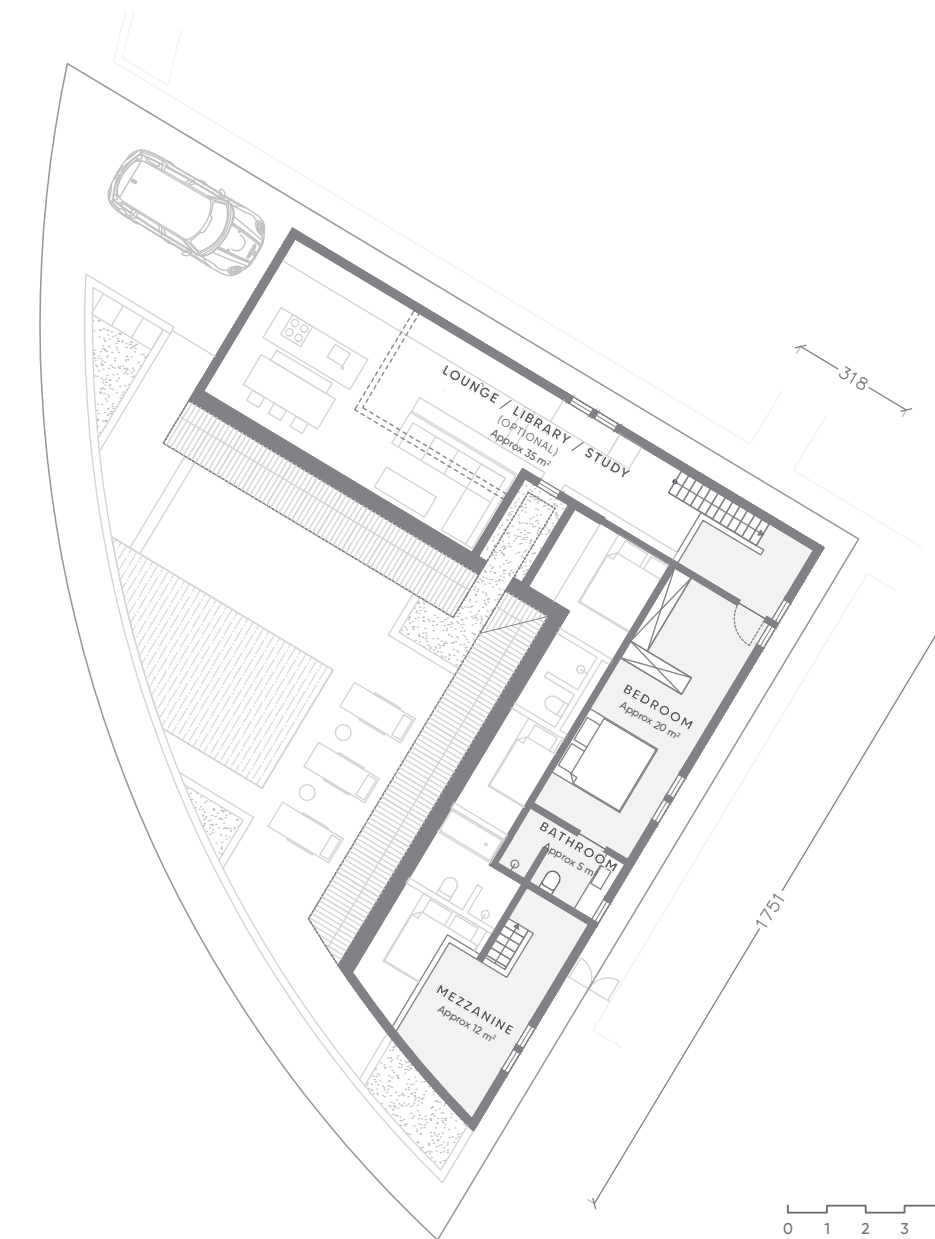


## 4 BEDROOM

12



Ground Floor



Second Floor



## 4 BEDROOM

13

**Building Area**  
207 m<sup>2</sup>

**Net Land Area**  
345 m<sup>2</sup>

**Semi-Gross Land Area**  
371 m<sup>2</sup>

**Swimming Pool Area**  
20 m<sup>2</sup>

**Parking Area**  
25 m<sup>2</sup>

**Bedroom**  
4

**Bathroom**  
4

### Key Features

- Large Pool
- Former Golf Course view



## 4 BEDROOM

13



Ground Floor



Second Floor



## 4 BEDROOM

15

**Building Area**  
234 m<sup>2</sup>

**Net Land Area**  
351.4 m<sup>2</sup>

**Semi-Gross Land Area**  
378 m<sup>2</sup>

**Swimming Pool Area**  
18 m<sup>2</sup>

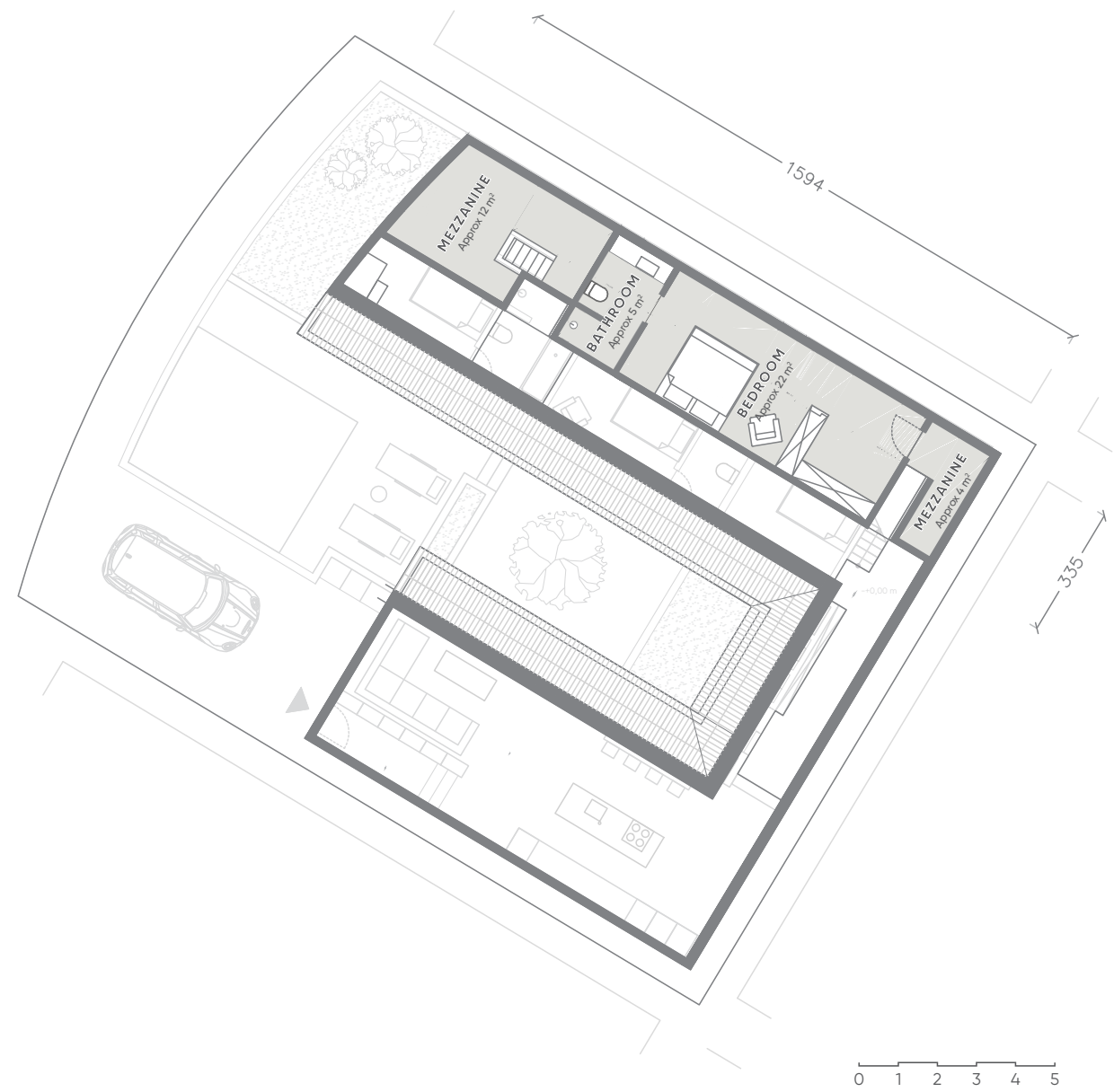
**Parking Area**  
18 m<sup>2</sup>

**Bedroom**  
4

**Bathroom**  
4



Ground Floor



Second Floor

## 4 BEDROOM

16

**Building Area**  
207 m<sup>2</sup>

**Net Land Area**  
324 m<sup>2</sup>

**Semi-Gross Land Area**  
348 m<sup>2</sup>

**Swimming Pool Area**  
20 m<sup>2</sup>

**Parking Area**  
25 m<sup>2</sup>

**Bedroom**  
4

**Bathroom**  
4

### Key Features

- Large Pool
- Attractive Price per Sqm
- Attractive Entry Price
- Former Golf Course View



## 4 BEDROOM

16



## 4 BEDROOM

18

**Building Area**  
204 m<sup>2</sup>

**Net Land Area**  
339 m<sup>2</sup>

**Semi-Gross Land Area**  
365 m<sup>2</sup>

**Swimming Pool Area**  
18 m<sup>2</sup>

**Parking Area**  
30 m<sup>2</sup>

**Bedroom**  
4

**Bathroom**  
4

### Key Features

- Attractive Entry Price
- Direct Wellness Access



## 4 BEDROOM

18

**Net Land Area**  
339 m<sup>2</sup>

**Semi-Gross Land Area**  
365 m<sup>2</sup>

**Swimming Pool Area**  
18 m<sup>2</sup>

**Parking Area**  
30 m<sup>2</sup>

**Bedroom**  
4

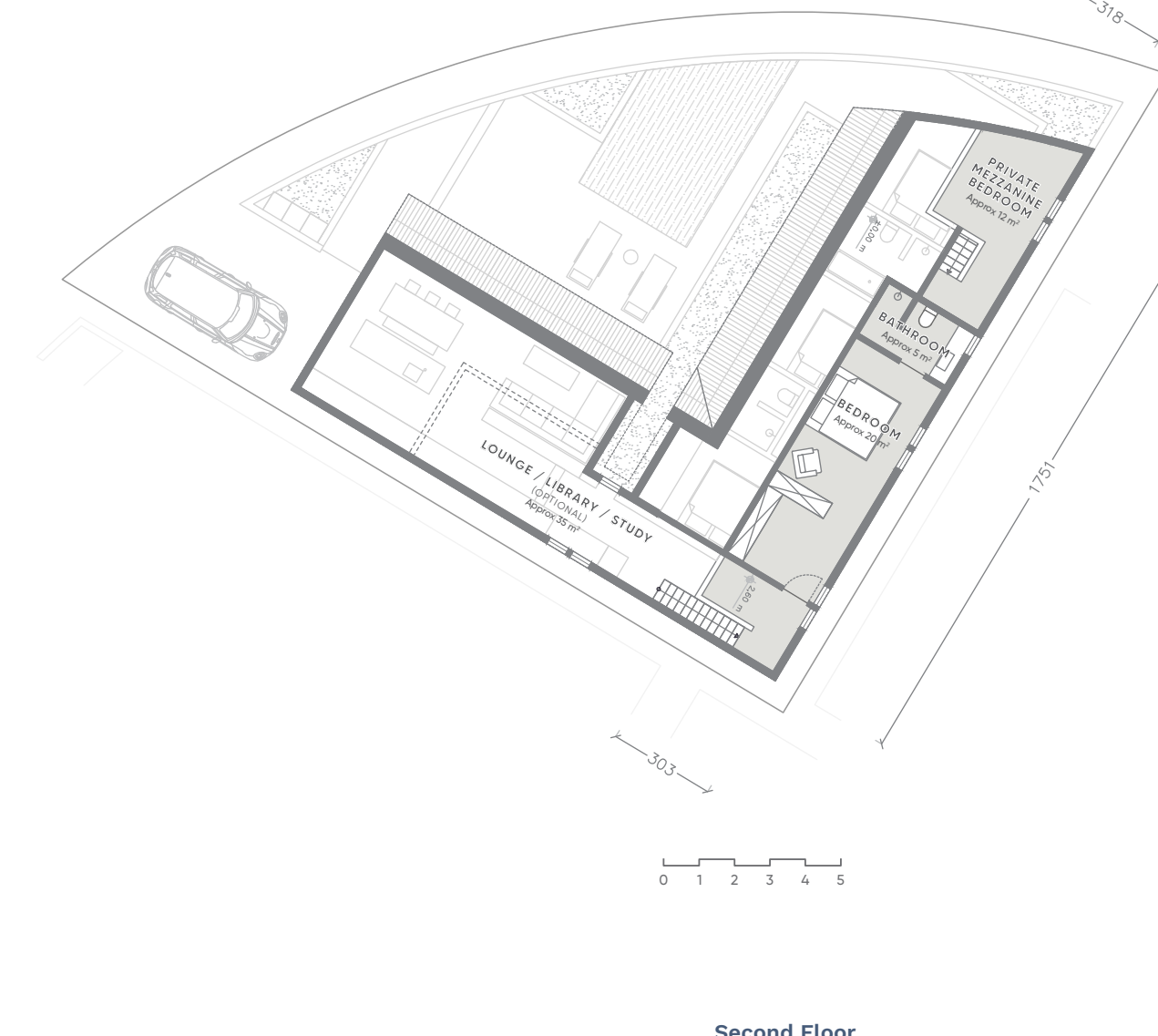
**Bathroom**  
4

### Key Features

- Attractive Entry Price
- Direct Wellness Access



Ground Floor



Second Floor

## 4 BEDROOM

19

**Building Area**  
233 m<sup>2</sup>

**Net Land Area**  
425 m<sup>2</sup>

**Semi-Gross Land Area**  
457 m<sup>2</sup>

**Swimming Pool Area**  
19 m<sup>2</sup>

**Parking Area**  
35 m<sup>2</sup>

**Bedroom**  
4

**Bathroom**  
4

### Key Features

- Large Land Plot Size
- Spacious 4BR Building

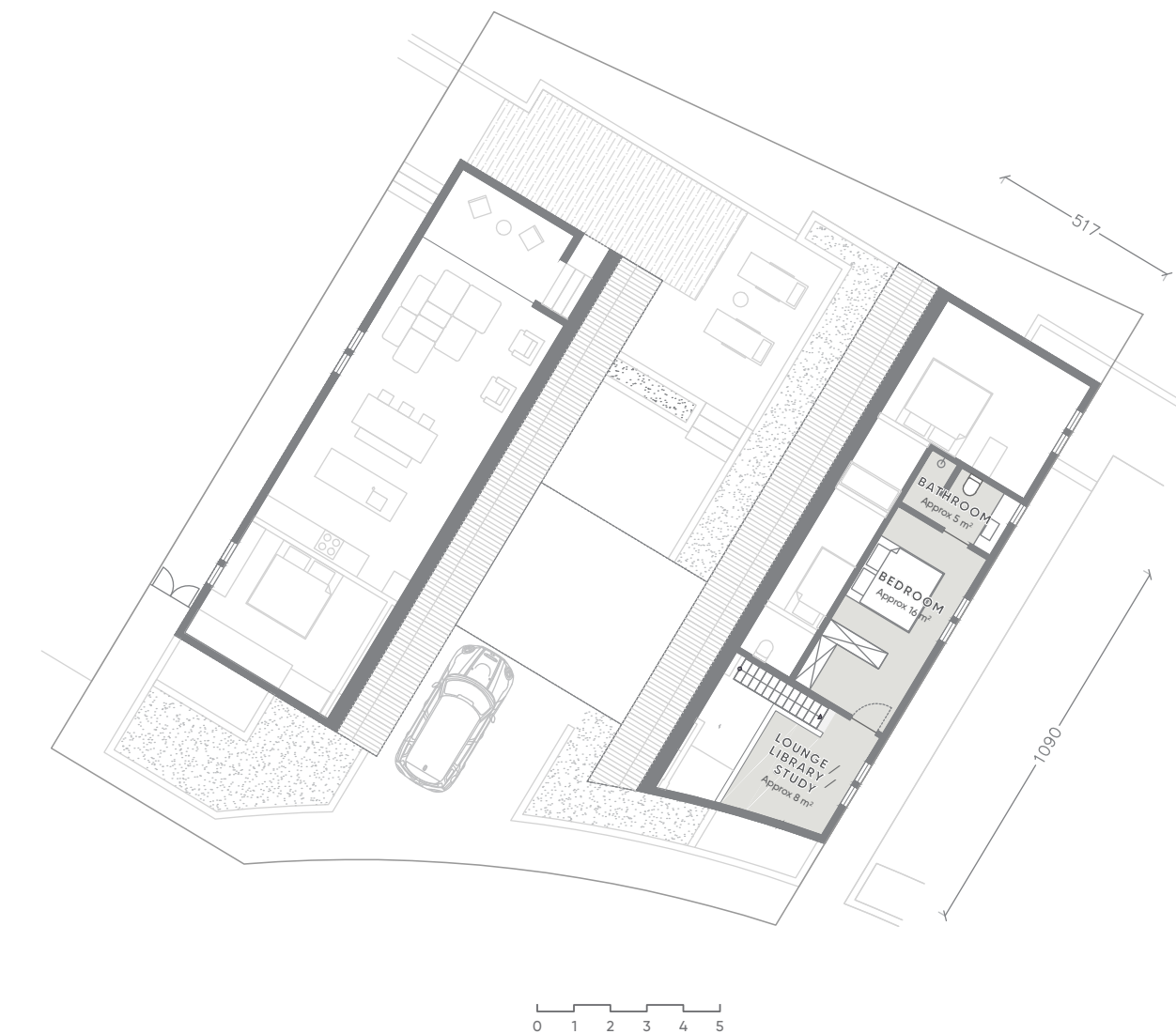


## 4 BEDROOM

19



Ground Floor



Second Floor



## 4 BEDROOM

20

**Building Area**  
280 m<sup>2</sup>

**Net Land Area**  
412 m<sup>2</sup>

**Semi-Gross Land Area**  
443 m<sup>2</sup>

**Swimming Pool Area**  
20 m<sup>2</sup>

**Parking Area**  
30 m<sup>2</sup>

**Bedroom**  
4

**Bathroom**  
4

### Key Features

- Large Pool
- Large Land Plot Size
- The Most Spacious 4BR Building
- Attractive Price per Sqm
- Direct Wellness Access



## 4 BEDROOM

20



## 4 BEDROOM

21

### Building Area

238 m<sup>2</sup>

### Net Land Area

406 m<sup>2</sup>

### Semi-Gross Land Area

436 m<sup>2</sup>

### Swimming Pool Area

20 m<sup>2</sup>

### Parking Area

30 m<sup>2</sup>

### Bedroom

4

### Bathroom

4

### Key Features

- Large Pool
- Spacious 4BR Building

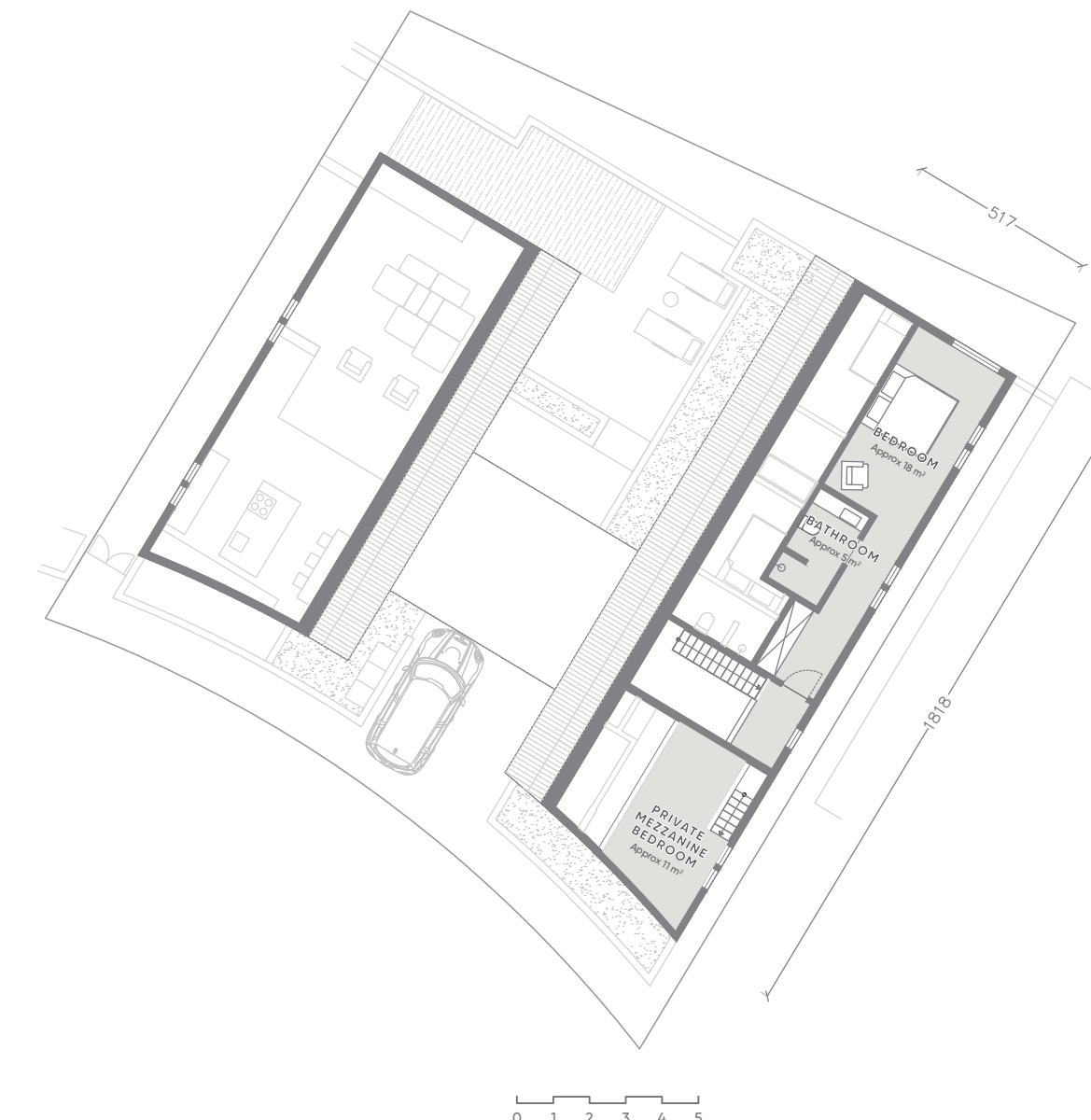


## 4 BEDROOM

21



Ground Floor



Second Floor



### 3 BEDROOM

01

**Building Area**  
185 m<sup>2</sup>

**Net Land Area**  
340 m<sup>2</sup>

**Semi-Gross Land Area**  
366 m<sup>2</sup>

**Swimming Pool Area**  
18 m<sup>2</sup>

**Parking Area**  
51 m<sup>2</sup>

**Bedroom**  
3

**Bathroom**  
3

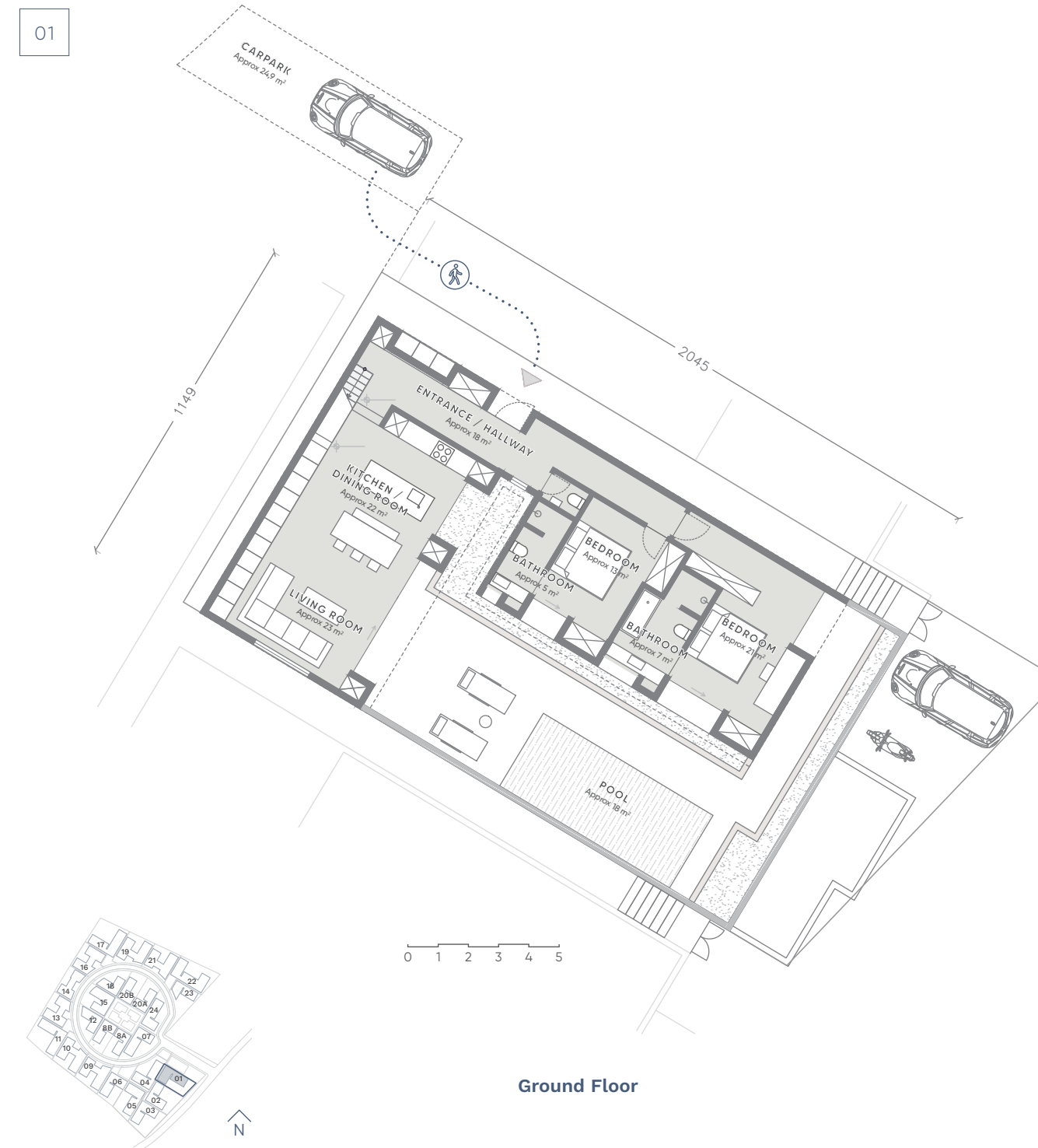
#### Key Features

- Attractive Price per Sqm
- Spacious 3BR Building
- Dual-entry Design
- 2 Car Parks
- Easy Access
- Interconnecting Villa Option

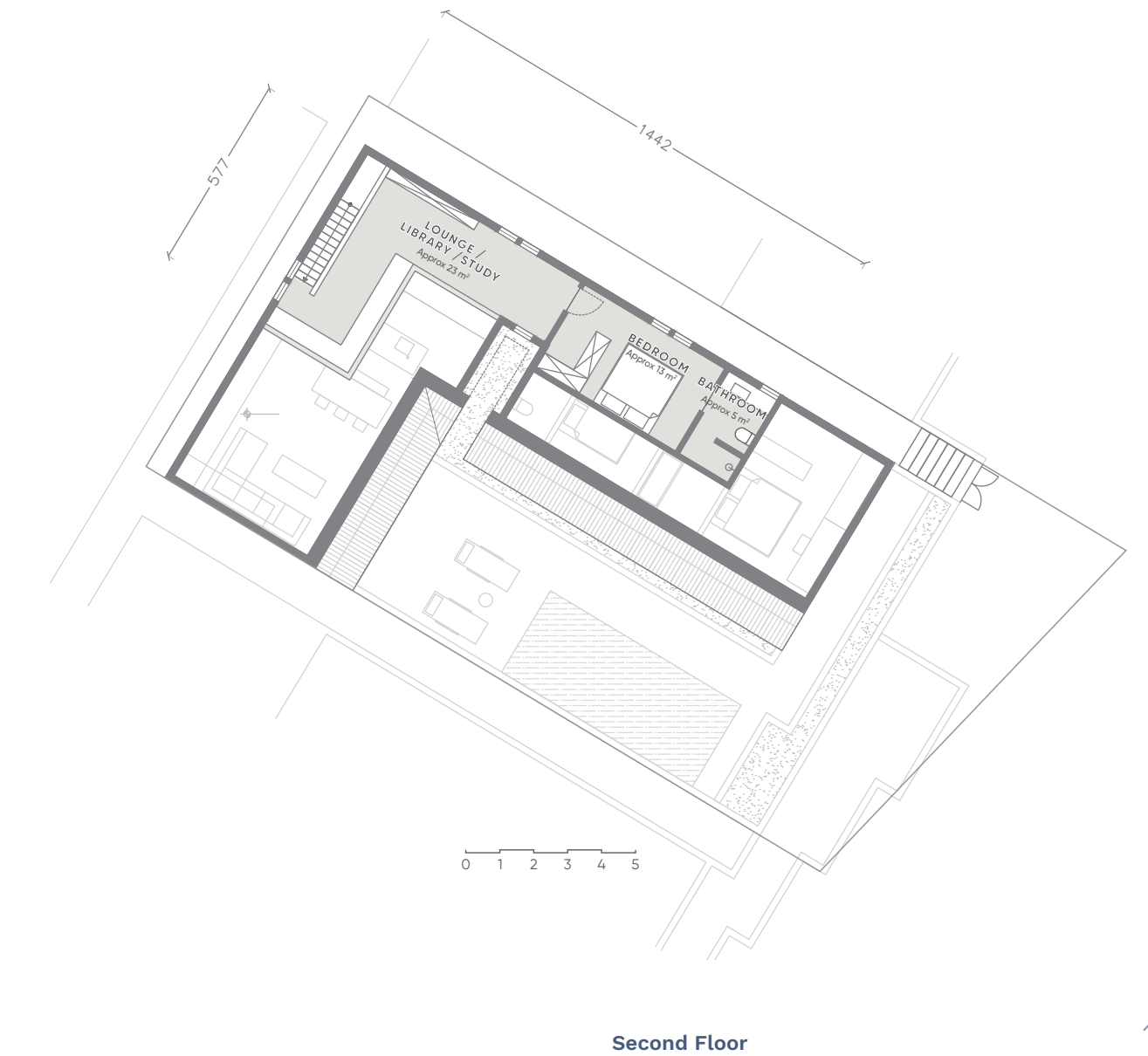


### 3 BEDROOM

01



Ground Floor



Second Floor

### 3 BEDROOM

02

#### Building Area

164 m<sup>2</sup>

#### Net Land Area

396 m<sup>2</sup>

#### Semi-Gross Land Area

426 m<sup>2</sup>

#### Swimming Pool Area

18 m<sup>2</sup>

#### Parking Area

36 m<sup>2</sup>

#### Bedroom

3

#### Bathroom

3

#### Key Features

- Large Land Plot Size
- Dual-entry Design
- Bike Parks at Entrance
- Easy Access
- Interconnecting Villa Option



### 3 BEDROOM

02



### 3 BEDROOM

03

**Building Area**  
168 m<sup>2</sup>

**Net Land Area**  
412 m<sup>2</sup>

**Semi-Gross Land Area**  
443 m<sup>2</sup>

**Swimming Pool Area**  
18 m<sup>2</sup>

**Parking Area**  
39 m<sup>2</sup>

**Bedroom**  
3

**Bathroom**  
3

**Key Features**

- Large Land Plot Size
- Dual-entry Design
- Bike Parks at Entrance
- Easy Access
- Private Corner Villa

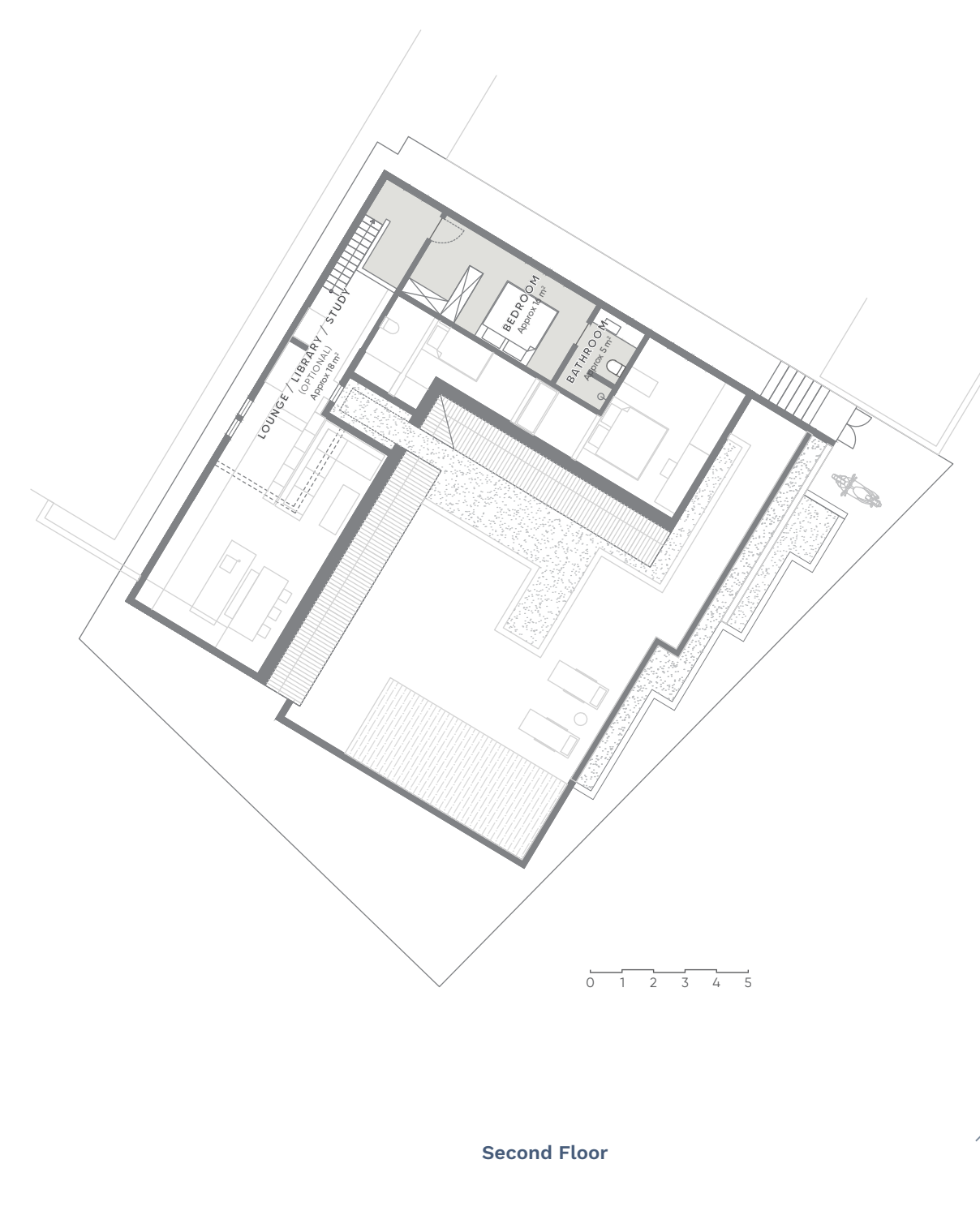


### 3 BEDROOM

03



Ground Floor



Second Floor



### 3 BEDROOM

04

**Building Area**  
200 m<sup>2</sup>

**Net Land Area**  
360 m<sup>2</sup>

**Semi-Gross Land Area**  
387 m<sup>2</sup>

**Swimming Pool Area**  
18 m<sup>2</sup>

**Parking Area**  
40 m<sup>2</sup>

**Bedroom**  
3

**Bathroom**  
3

**Key Features**

- Attractive Price per Sqm
- The Most Spacious 3BR Building
- Easy Access
- Large Land Plot Size



### 3 BEDROOM

04



### 3 BEDROOM

05

**Building Area**  
180 m<sup>2</sup>

**Net Land Area**  
362 m<sup>2</sup>

**Semi-Gross Land Area**  
389 m<sup>2</sup>

**Swimming Pool Area**  
20 m<sup>2</sup>

**Parking Area**  
22 m<sup>2</sup>

**Bedroom**  
3

**Bathroom**  
3

**Key Features**

- Easy Access
- Interconnecting Villa Option



### 3 BEDROOM

05

**Building Area**  
180 m<sup>2</sup>

**Net Land Area**  
362 m<sup>2</sup>

**Semi-Gross Land Area**  
389 m<sup>2</sup>

**Swimming Pool Area**  
20 m<sup>2</sup>

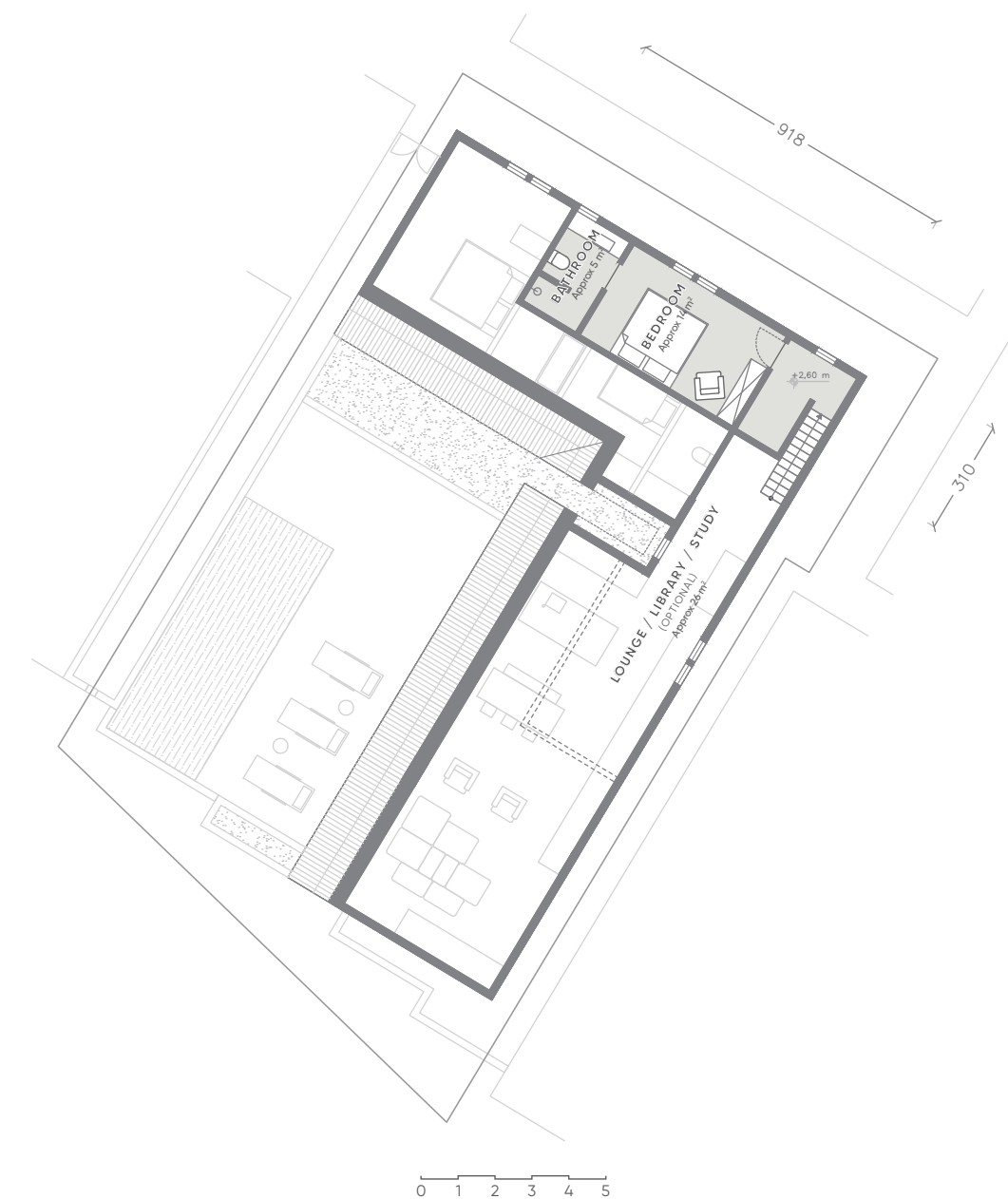
**Parking Area**  
22 m<sup>2</sup>

**Bedroom**  
3

**Bathroom**  
3

**Key Features**

- Easy Access
- Interconnecting Villa Option



### 3 BEDROOM

06

#### Building Area

165 m<sup>2</sup>

#### Net Land Area

339 m<sup>2</sup>

#### Semi-Gross Land Area

364 m<sup>2</sup>

#### Swimming Pool Area

20 m<sup>2</sup>

#### Parking Area

35 m<sup>2</sup>

#### Bedroom

3

#### Bathroom

3

#### Key Features

- Attractive Entry Price
- Easy Access and Parking
- Interconnecting Villa Option



### 3 BEDROOM

06



### 3 BEDROOM

07

**Building Area**  
187 m<sup>2</sup>

**Net Land Area**  
412 m<sup>2</sup>

**Semi-Gross Land Area**  
444 m<sup>2</sup>

**Swimming Pool Area**  
19 m<sup>2</sup>

**Parking Area**  
30 m<sup>2</sup>

**Bedroom**  
3

**Bathroom**  
3

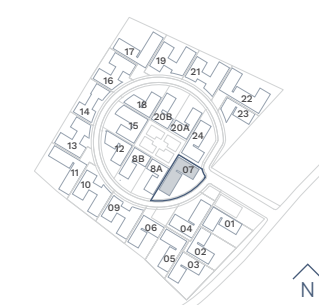
**Key Features**

- Largest 3BR Land Plot Size
- Spacious 3BR Building
- Direct Wellness Access

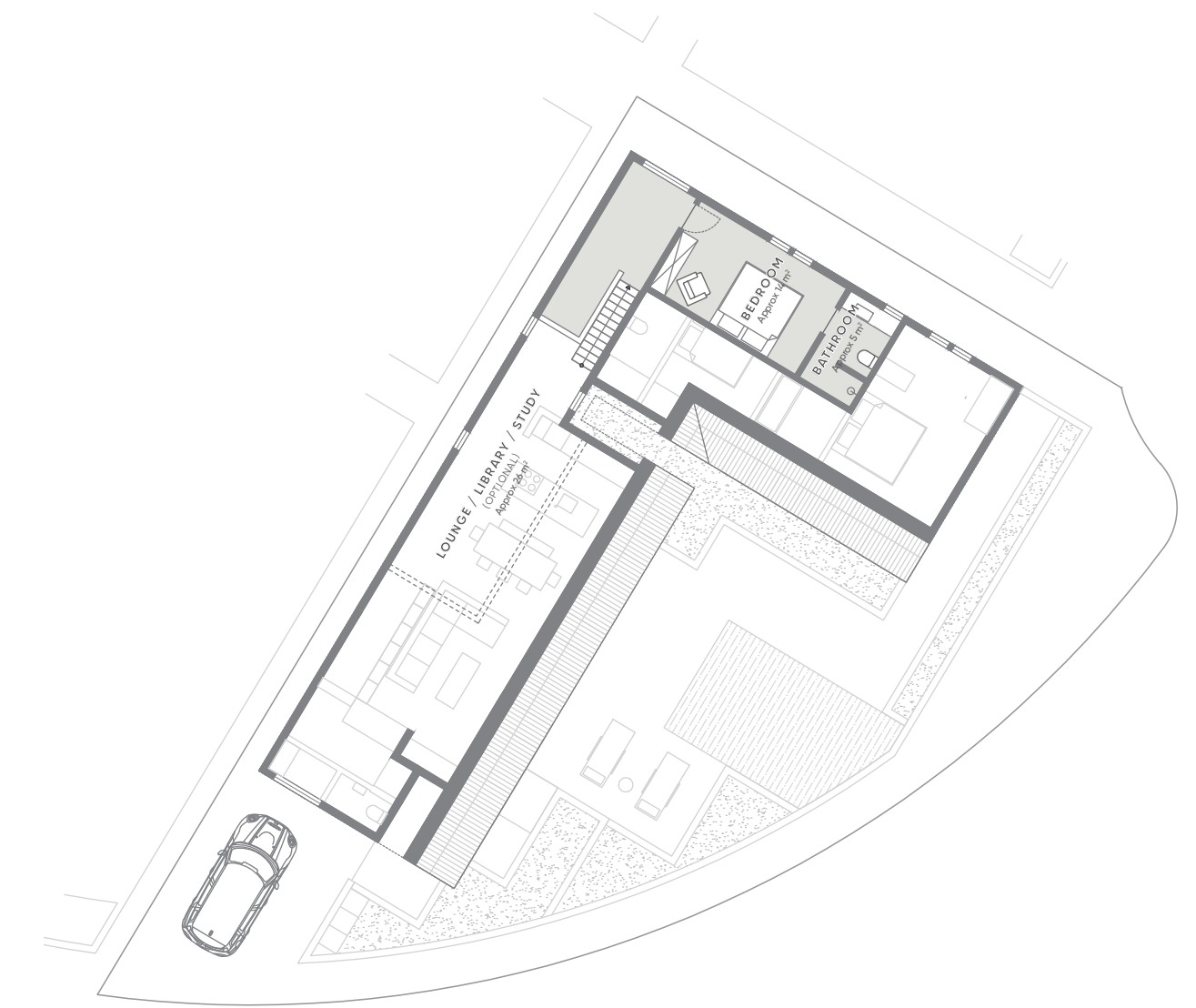


### 3 BEDROOM

07



Ground Floor



Second Floor



### 3 BEDROOM

8A

**Building Area**  
149 m<sup>2</sup>

**Net Land Area**  
270.9 m<sup>2</sup>

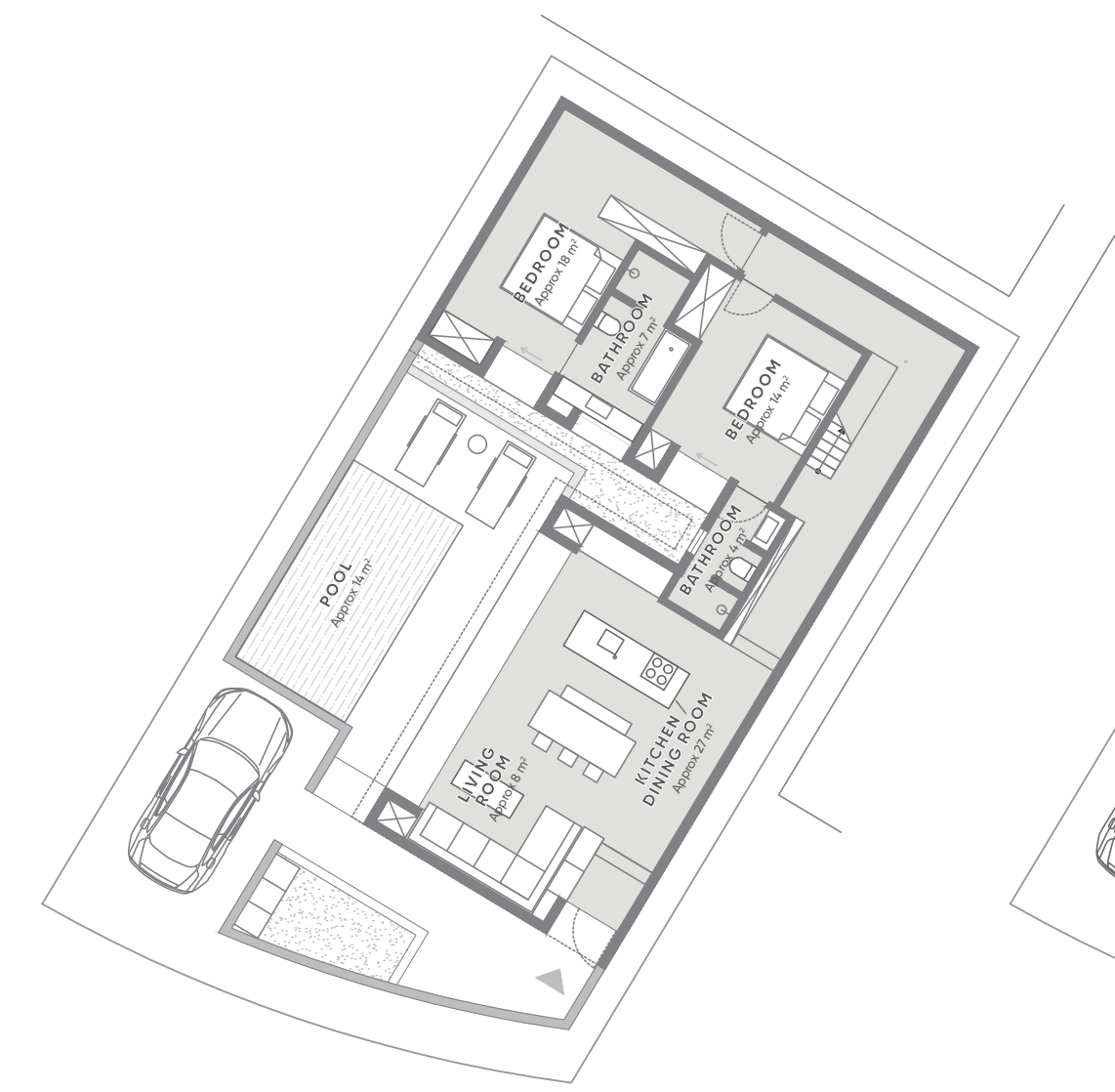
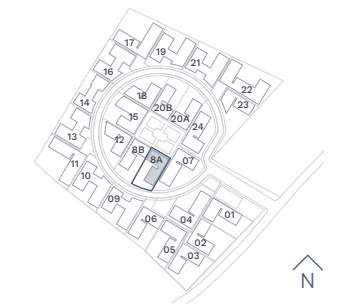
**Semi-Gross Land Area**  
291 m<sup>2</sup>

**Swimming Pool Area**  
18 m<sup>2</sup>

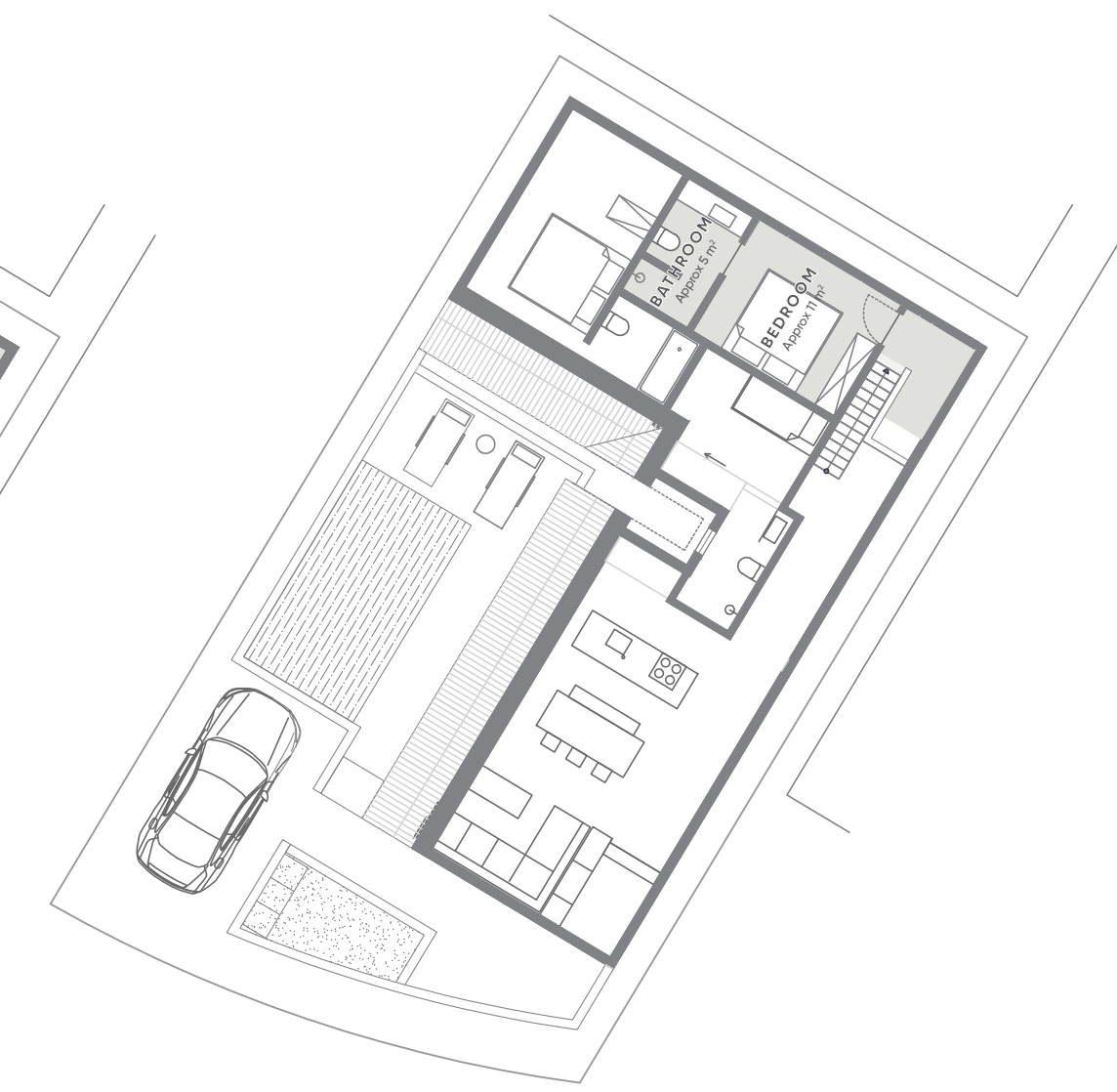
**Parking Area**  
20 m<sup>2</sup>

**Bedroom**  
3

**Bathroom**  
3



Ground Floor



Second Floor



### 3 BEDROOM

8B

**Building Area**  
149 m<sup>2</sup>

**Net Land Area**  
275.2 m<sup>2</sup>

**Semi-Gross Land Area**  
296 m<sup>2</sup>

**Swimming Pool Area**  
18 m<sup>2</sup>

**Parking Area**  
20 m<sup>2</sup>

**Bedroom**  
3

**Bathroom**  
3



Ground Floor



Second Floor



### 3 BEDROOM

12

**Building Area**  
161 m<sup>2</sup>

**Net Land Area**  
298 m<sup>2</sup>

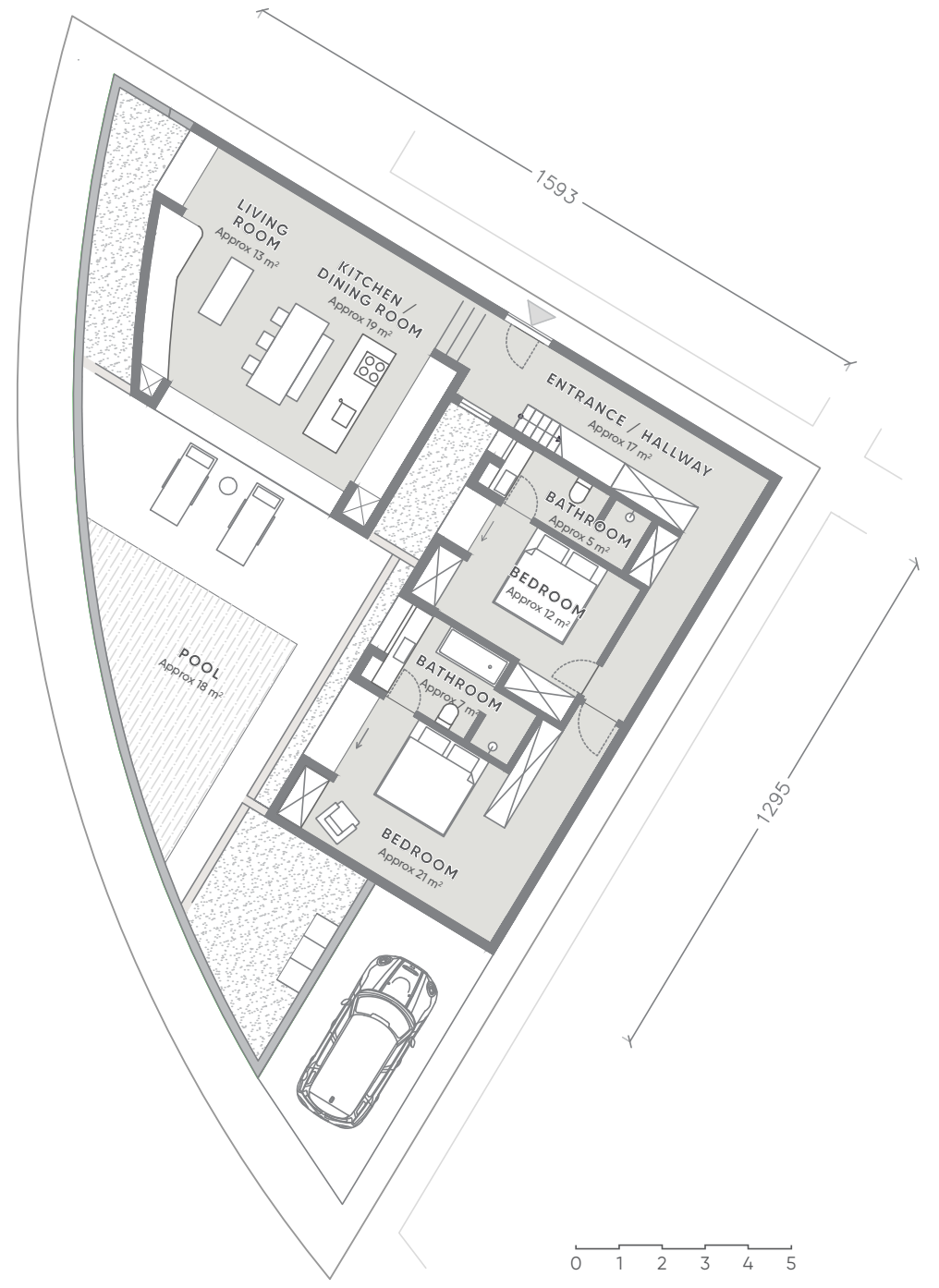
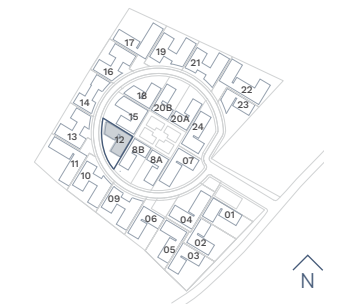
**Semi-Gross Land Area**  
321 m<sup>2</sup>

**Swimming Pool Area**  
18 m<sup>2</sup>

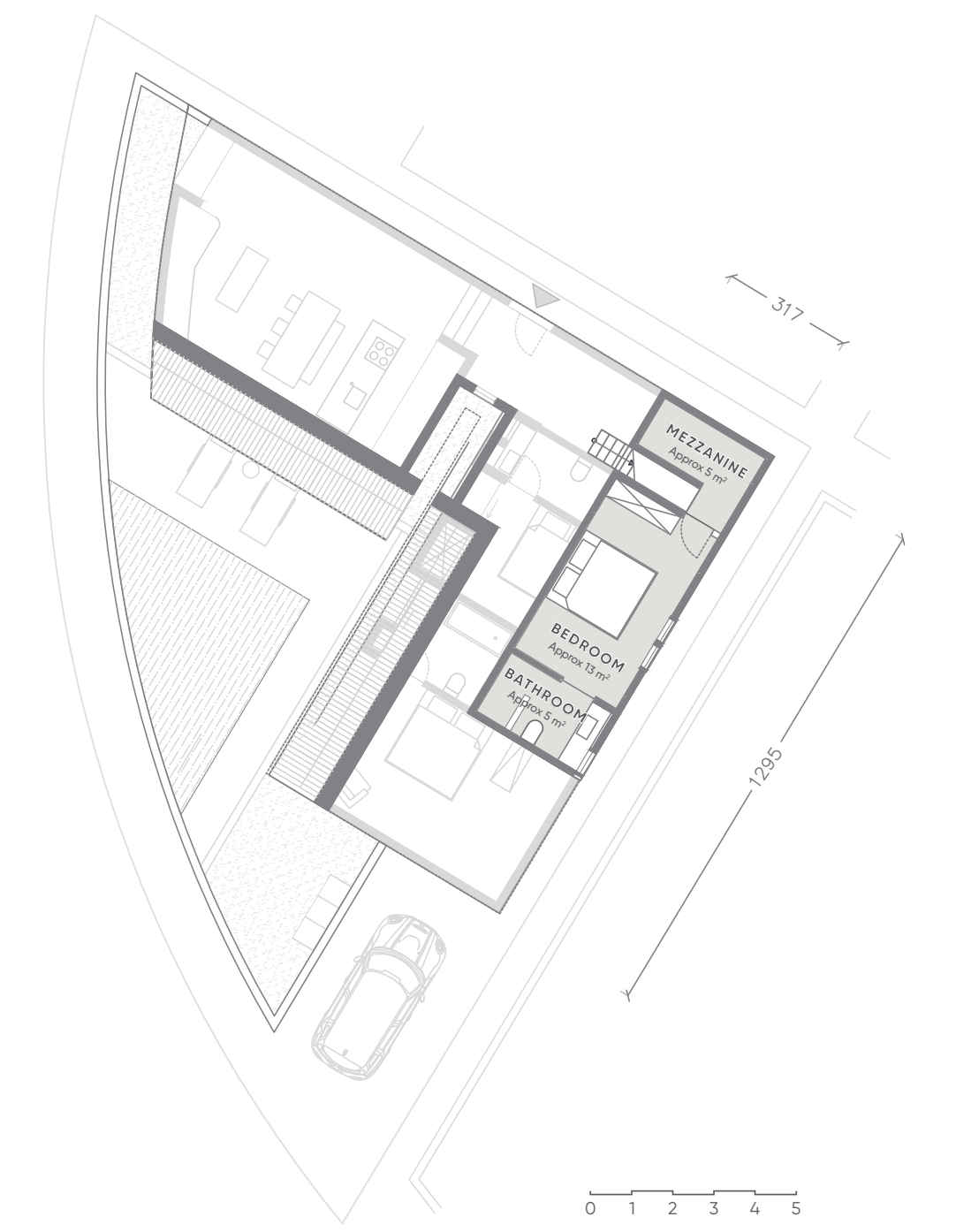
**Parking Area**  
18 m<sup>2</sup>

**Bedroom**  
3

**Bathroom**  
3



Ground Floor



Second Floor

### 3 BEDROOM

18

**Building Area**  
161 m<sup>2</sup>

**Net Land Area**  
298 m<sup>2</sup>

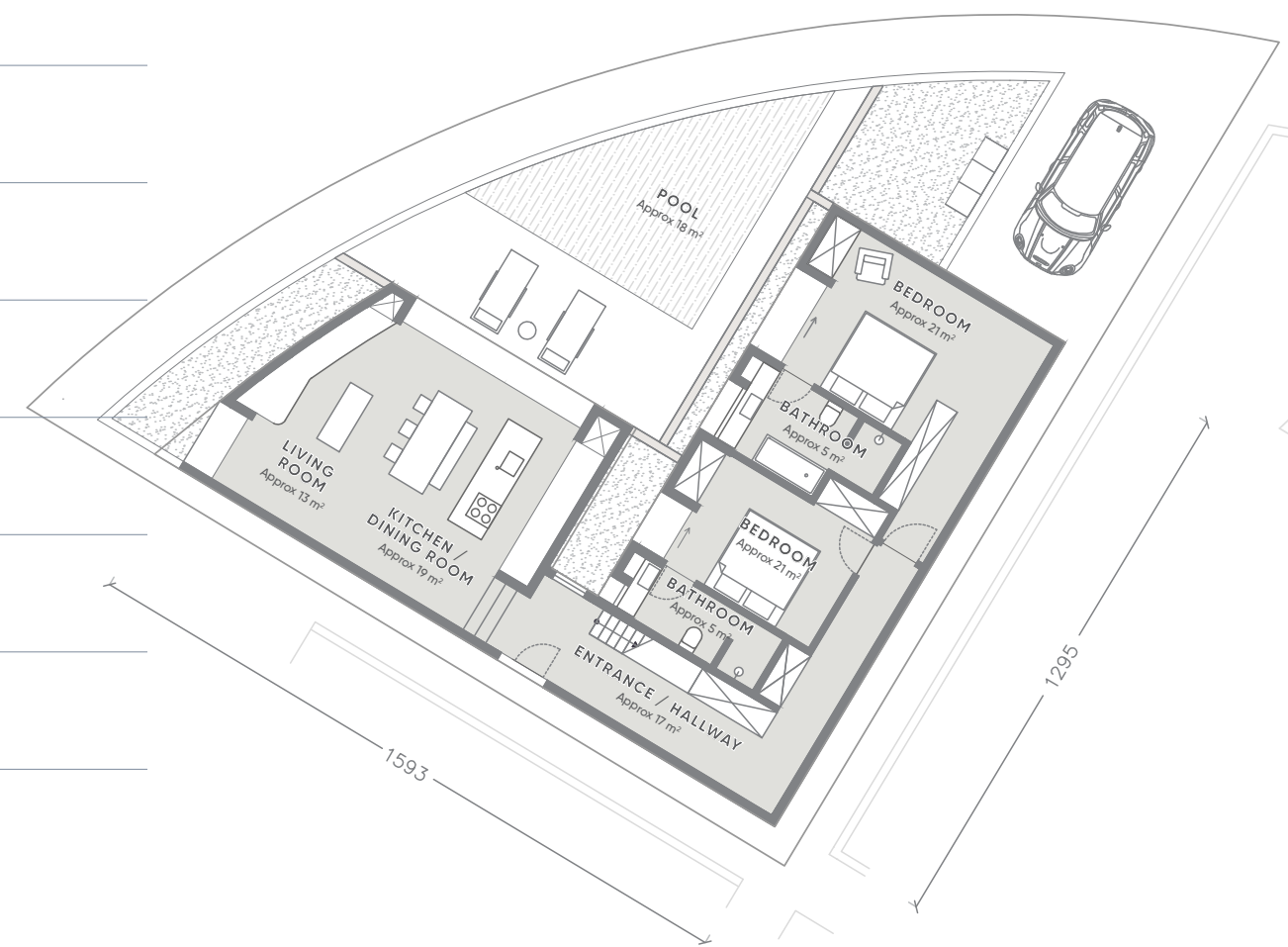
**Semi-Gross Land Area**  
321 m<sup>2</sup>

**Swimming Pool Area**  
18 m<sup>2</sup>

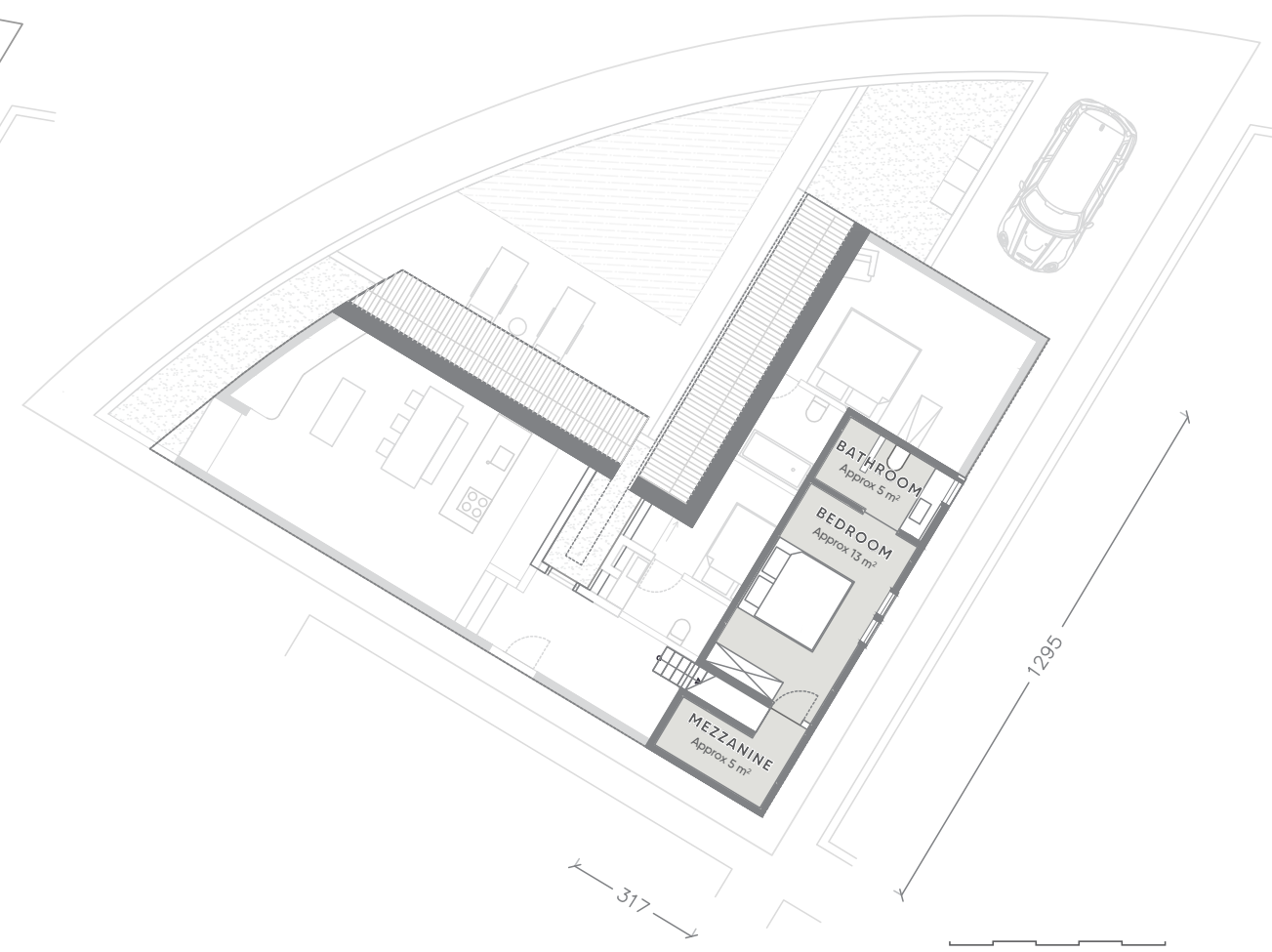
**Parking Area**  
18 m<sup>2</sup>

**Bedroom**  
3

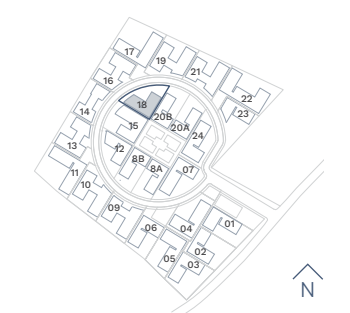
**Bathroom**  
3



Ground Floor



Second Floor



### 3 BEDROOM

20A

**Building Area**  
149 m<sup>2</sup>

**Net Land Area**  
270.9 m<sup>2</sup>

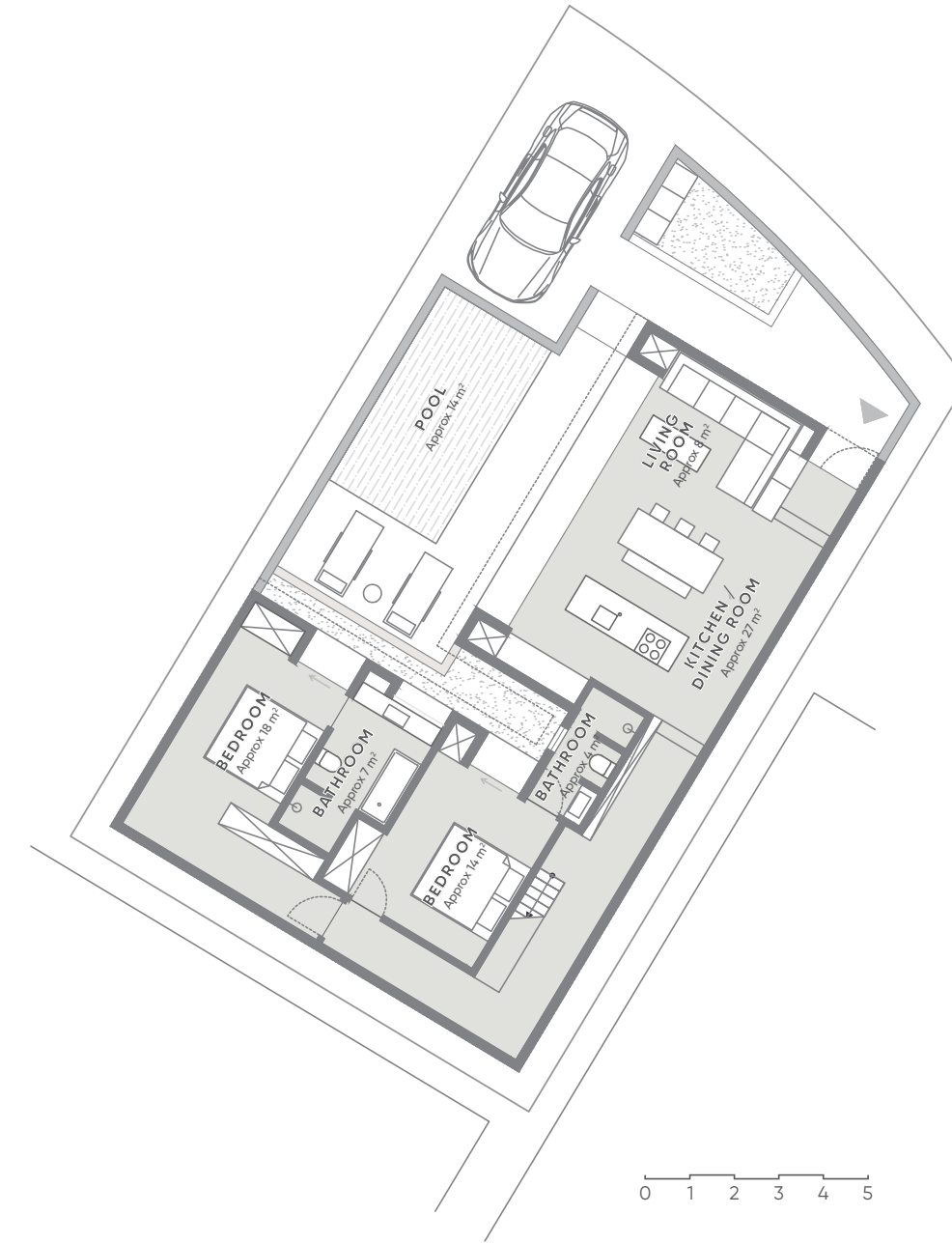
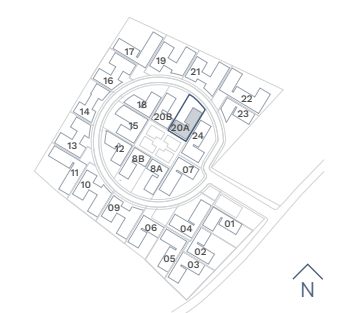
**Semi-Gross Land Area**  
291 m<sup>2</sup>

**Swimming Pool Area**  
18 m<sup>2</sup>

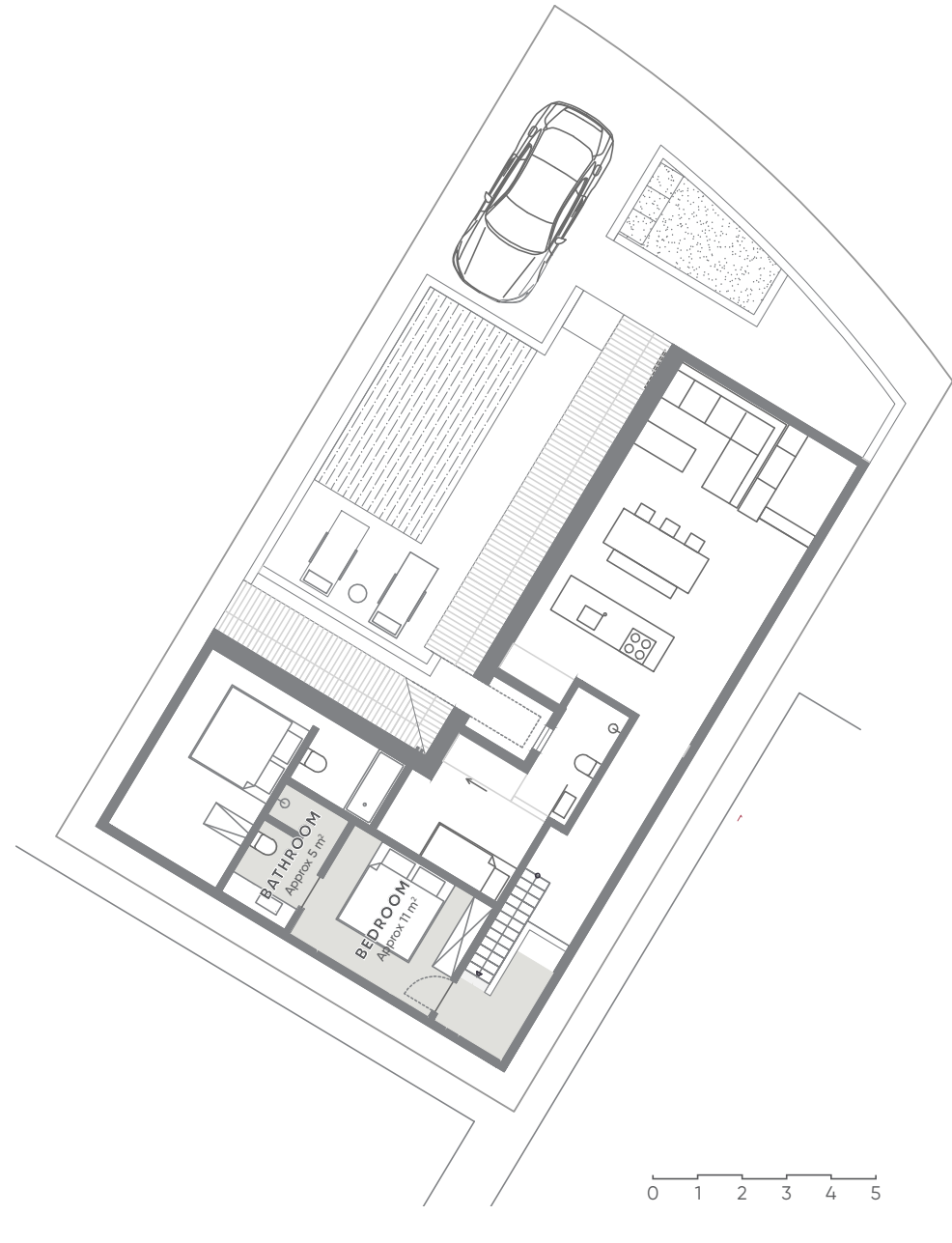
**Parking Area**  
20 m<sup>2</sup>

**Bedroom**  
3

**Bathroom**  
3



Ground Floor



Second Floor



### 3 BEDROOM

20B

**Building Area**  
149 m<sup>2</sup>

**Net Land Area**  
275.2 m<sup>2</sup>

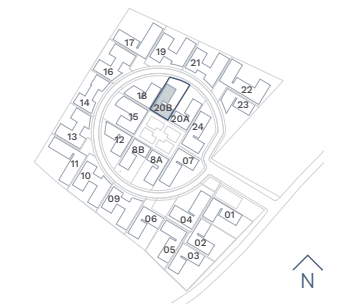
**Semi-Gross Land Area**  
296 m<sup>2</sup>

**Swimming Pool Area**  
18 m<sup>2</sup>

**Parking Area**  
20 m<sup>2</sup>

**Bedroom**  
3

**Bathroom**  
3



Ground Floor



Second Floor



### 3 BEDROOM

23

#### Building Area

175 m<sup>2</sup>

#### Net Land Area

361 m<sup>2</sup>

#### Semi-Gross Land Area

388 m<sup>2</sup>

#### Swimming Pool Area

16 m<sup>2</sup>

#### Parking Area

35 m<sup>2</sup>

#### Bedroom

3

#### Bathroom

3

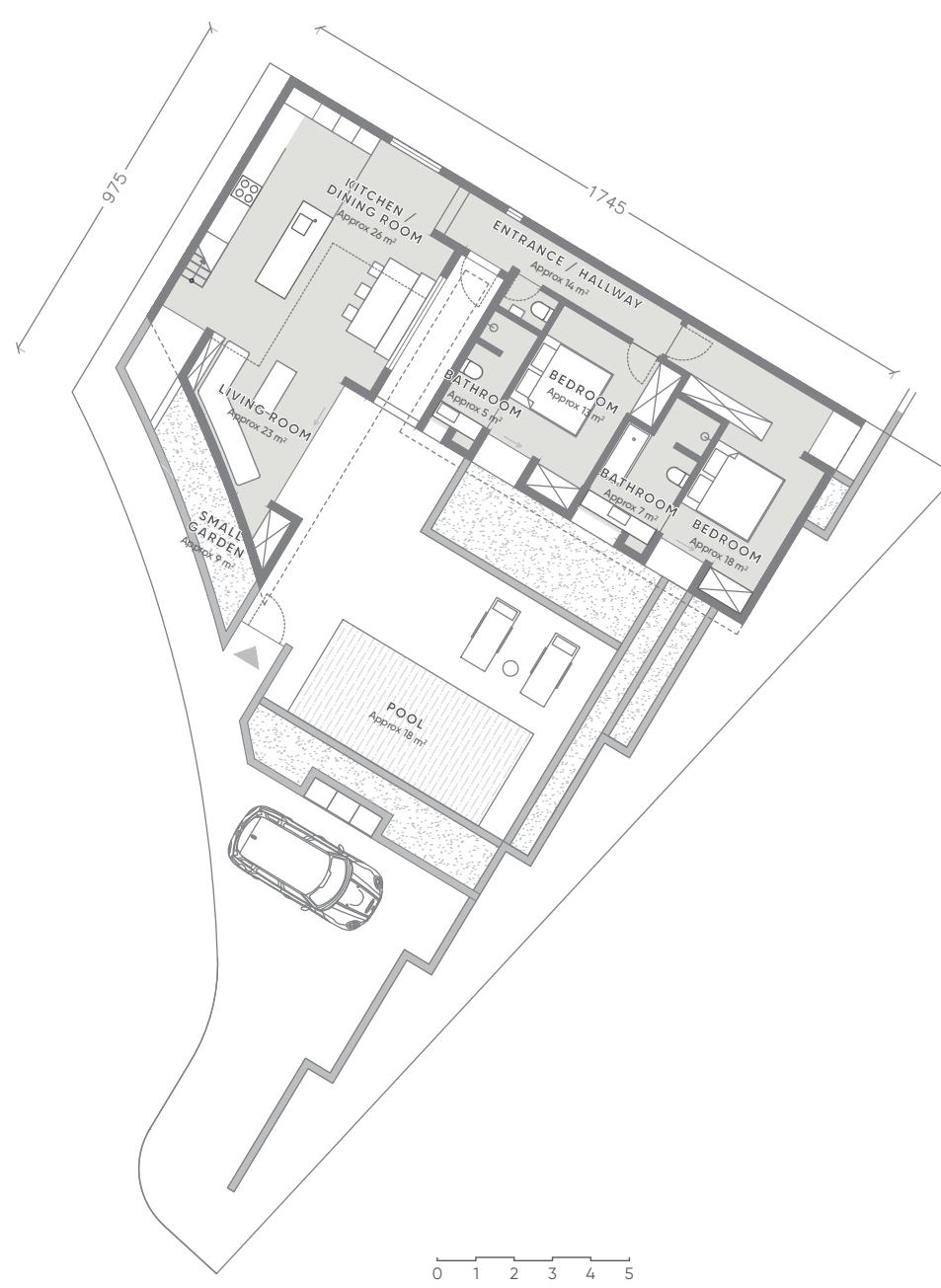
#### Key Features

- Easy Access
- Most Balanced Land-to-Building Ratio
- Main Access via Landscaped Garden

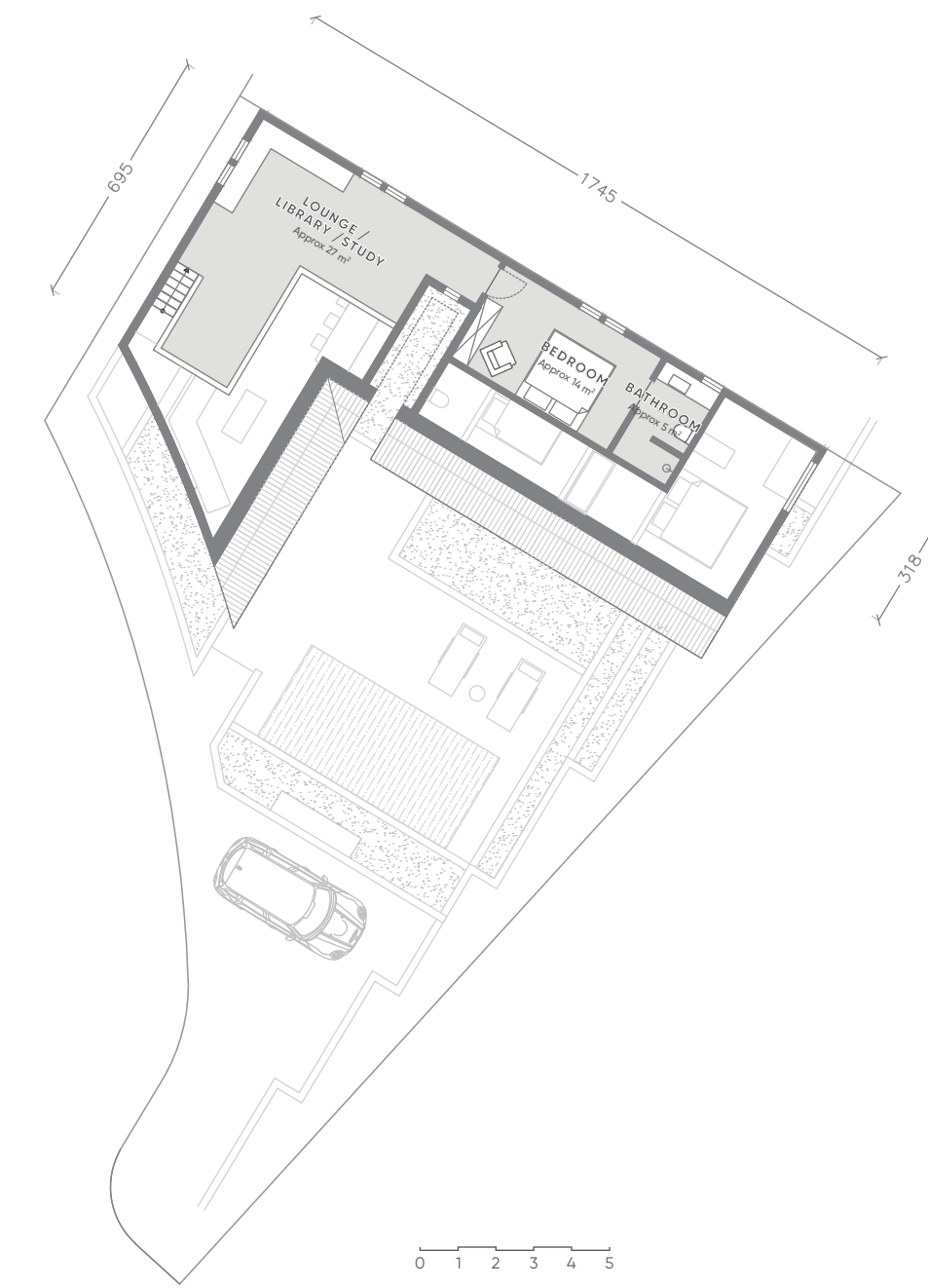


### 3 BEDROOM

23



Ground Floor



Second Floor



### 3 BEDROOM

24

**Building Area**  
164 m<sup>2</sup>

**Net Land Area**  
362 m<sup>2</sup>

**Semi-Gross Land Area**  
389 m<sup>2</sup>

**Swimming Pool Area**  
14 m<sup>2</sup>

**Parking Area**  
25 m<sup>2</sup>

**Bedroom**  
3

**Bathroom**  
3

**Key Features**

- Attractive Entry Price
- Direct Wellness Access



### 3 BEDROOM

24

**Building Area**  
164 m<sup>2</sup>

**Net Land Area**  
362 m<sup>2</sup>

**Semi-Gross Land Area**  
389 m<sup>2</sup>

**Swimming Pool Area**  
14 m<sup>2</sup>

**Parking Area**  
25 m<sup>2</sup>

**Bedroom**  
3

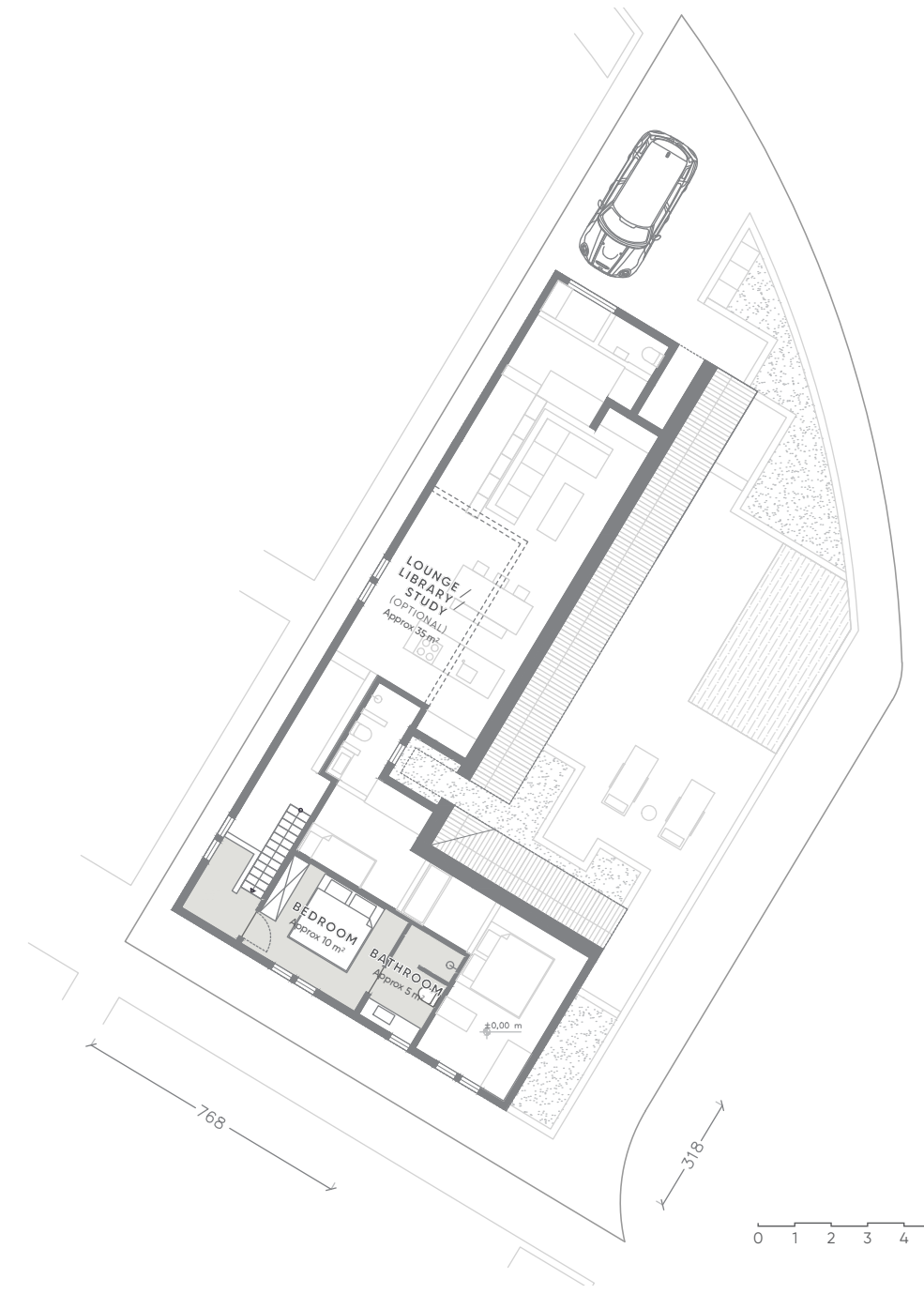
**Bathroom**  
3

**Key Features**

- Attractive Entry Price
- Direct Wellness Access



Ground Floor



Second Floor

