

# THE ONE

BY ALMAL

NUSA DUA - BALI

 **ALMAL**

PROJECT LAYOUTS



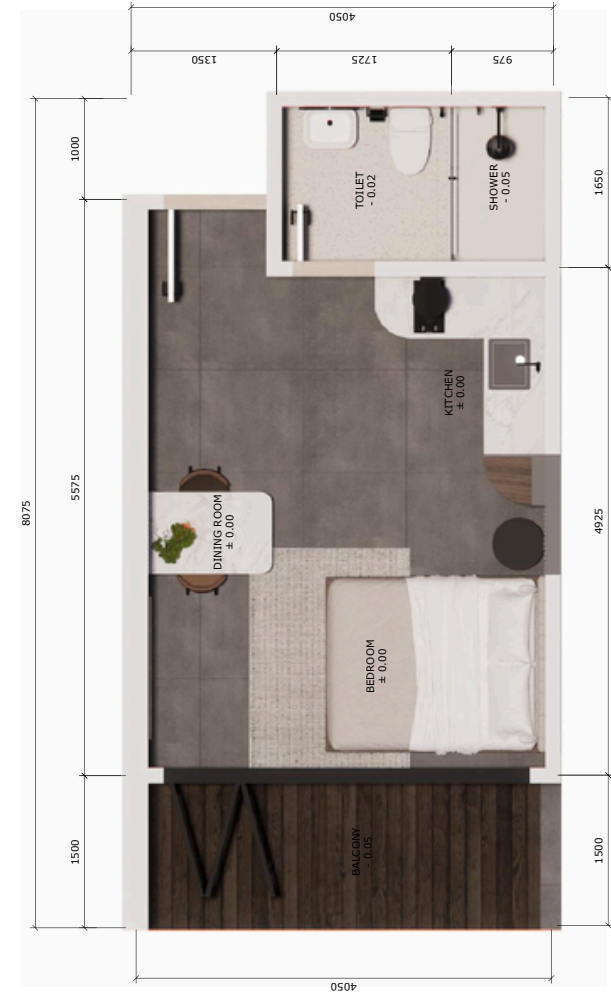
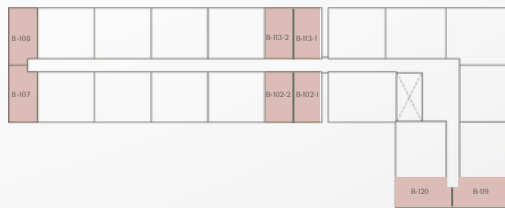
# STUDIO APARTMENT

Apartment Area	264.25 SQ.FT.	18.72 SQ.M.
Balcony Area	64.58 SQ.FT.	05.70 SQ.M.
Total Area	328.83 SQ.FT.	28.00 SQ.M.

## KEYPLAN



## TYPICAL FLOOR PLAN



Disclaimer: All materials, dimensions, prices and drawings are approximate only. Information is subject to change without notice, at the developer's absolute discretion. Actual area may vary from the stated area.



# 1 BEDROOM APARTMENT

TYPE A

Apartment Area	538.19 SQ.FT.	50.00 SQ.M.
Balcony Area	64.58 SQ.FT.	06.00 SQ.M.
Total Area	602.77 SQ.FT.	56.00 SQ.M.

## KEYPLAN



## TYPICAL FLOOR PLAN



Disclaimer: All materials, dimensions, prices and drawings are approximate only. Information is subject to change without notice, at the developer's absolute discretion. Actual area may vary from the stated area.



# 1 BEDROOM APARTMENT

TYPE B

Apartment Area	567.79 SQ.FT.	52.75 SQ.M.
Balcony Area	72.65 SQ.FT.	06.75 SQ.M.
Total Area	640.45 SQ.FT.	59.50 SQ.M.

## KEYPLAN



## TYPICAL FLOOR PLAN



Disclaimer: All materials, dimensions, prices and drawings are approximate only. Information is subject to change without notice, at the developer's absolute discretion. Actual area may vary from the stated area.



# 1 BEDROOM APARTMENT

TYPE C

Apartment Area	688.89 SQ.FT.	64.00 SQ.M.
Balcony Area	64.58 SQ.FT.	06.00 SQ.M.
Total Area	753.47 SQ.FT.	70.00 SQ.M.

## KEYPLAN



## TYPICAL FLOOR PLAN



Disclaimer: All materials, dimensions, prices and drawings are approximate only. Information is subject to change without notice, at the developer's absolute discretion. Actual area may vary from the stated area.



# 1 BEDROOM APARTMENT

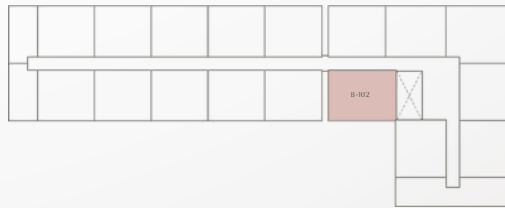
TYPE D

Apartment Area	651.21 SQ.FT.	60.50 SQ.M.
Balcony Area	64.58 SQ.FT.	06.00 SQ.M.
Total Area	715.80 SQ.FT.	66.50 SQ.M.

## KEYPLAN



## TYPICAL FLOOR PLAN



Disclaimer: All materials, dimensions, prices and drawings are approximate only. Information is subject to change without notice, at the developer's absolute discretion. Actual area may vary from the stated area.



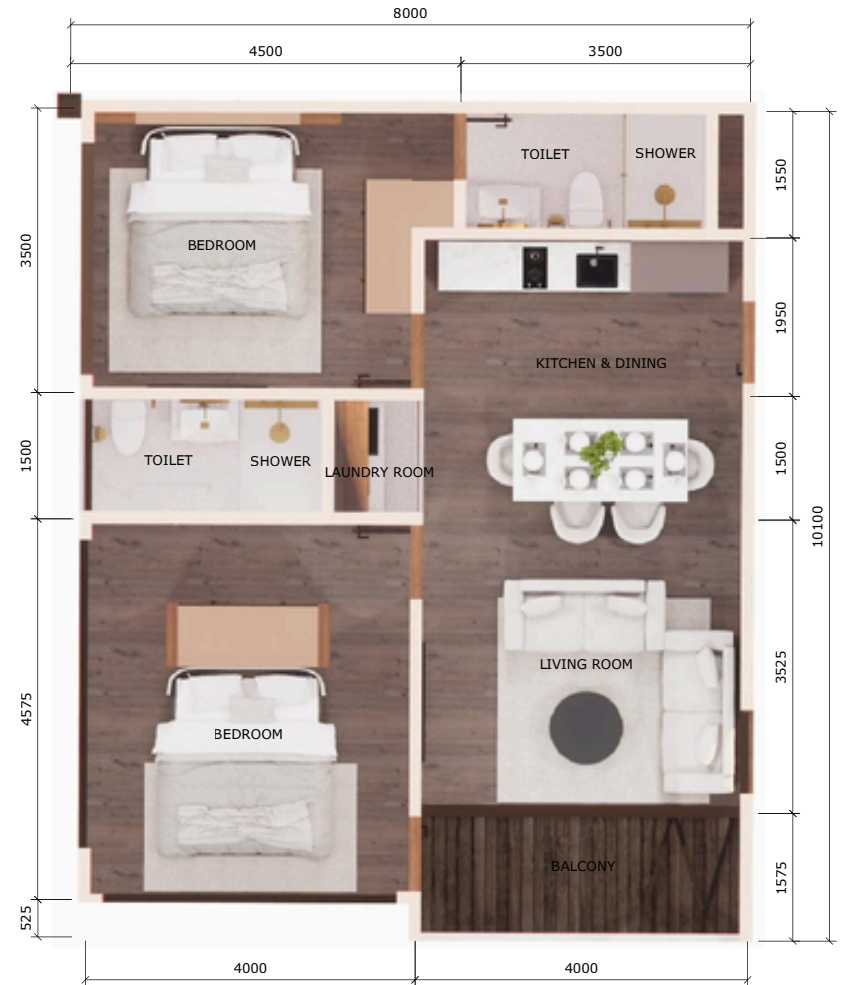
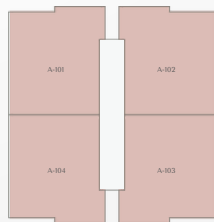
## 2 BEDROOM APARTMENT

Apartment Area	775.00 SQ.FT.	72.00 SQ.M.
Balcony Area	64.58 SQ.FT.	06.00 SQ.M.
Total Area	839.58 SQ.FT.	78.00 SQ.M.

### KEYPLAN



### TYPICAL FLOOR PLAN

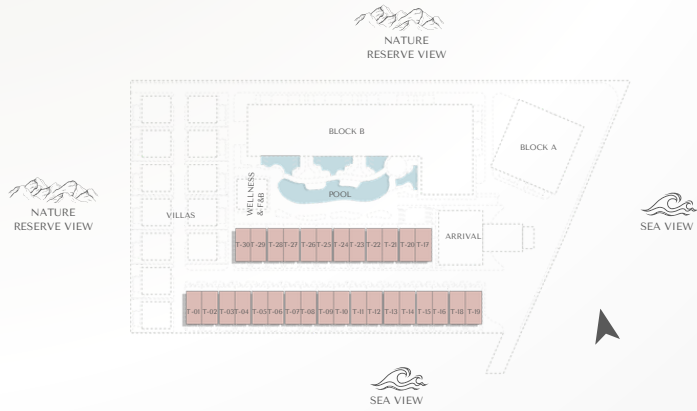


Disclaimer: All materials, dimensions, prices and drawings are approximate only. Information is subject to change without notice, at the developer's absolute discretion. Actual area may vary from the stated area.

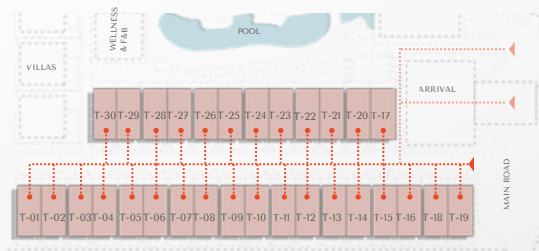
# 1 BEDROOM TOWNHOUSE

Land Area 733.56 SQ.FT. 68.15 SQ.M.  
 Built-up Area 753.47 SQ.FT. 70.00 SQ.M.

## KEYPLAN



## TYPICAL FLOOR PLAN



GROUND FLOOR



FIRST FLOOR

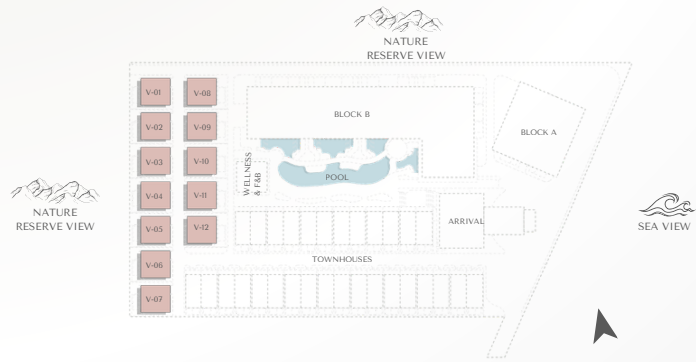
Disclaimer: All materials, dimensions, prices and drawings are approximate only. Information is subject to change without notice, at the developer's absolute discretion. Actual area may vary from the stated area.



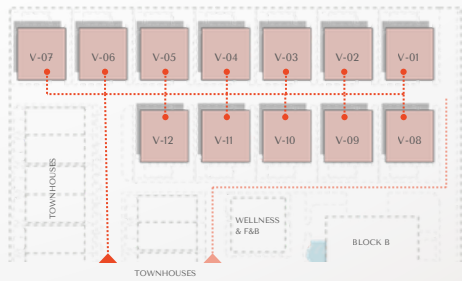
# 2 BEDROOM VILLA

Land Area      1506.95 SQ.FT.      140.00 SQ.M.  
 Built-up Area    1184.03 SQ.FT.      110.00 SQ.M.

## KEYPLAN



## TYPICAL FLOOR PLAN



GROUND FLOOR



FIRST FLOOR

Disclaimer: All materials, dimensions, prices and drawings are approximate only. Information is subject to change without notice, at the developer's absolute discretion. Actual area may vary from the stated area.