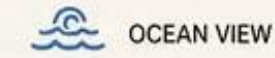


I · CHAPTER

Bel Rive Bali · Balangan

Balangan, Badung

ORIENTATION & VIEW POTENTIAL



OCEAN VIEW



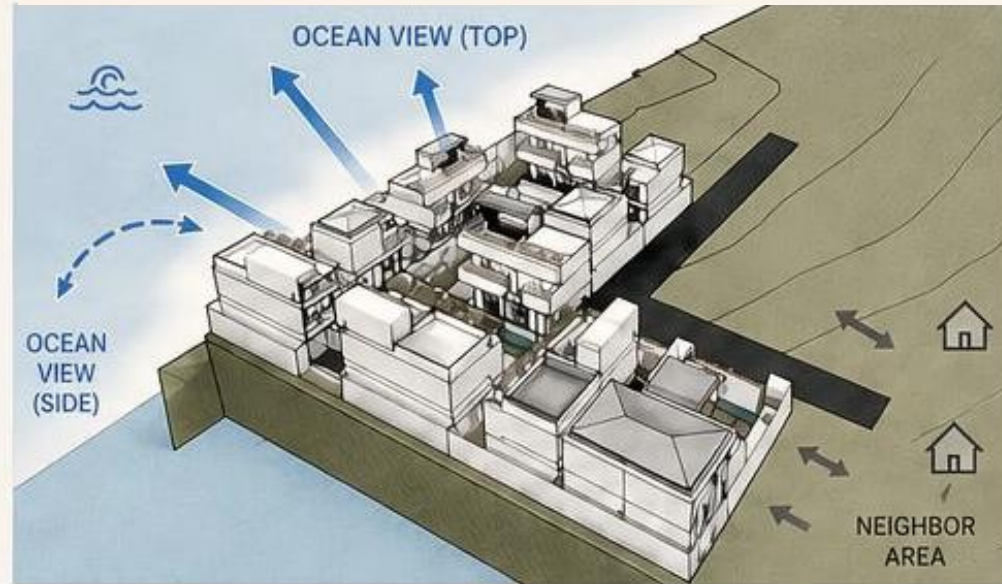
NEIGHBOR VIEW

■ OPENING / VIEW

■ GREEN / BUFFER

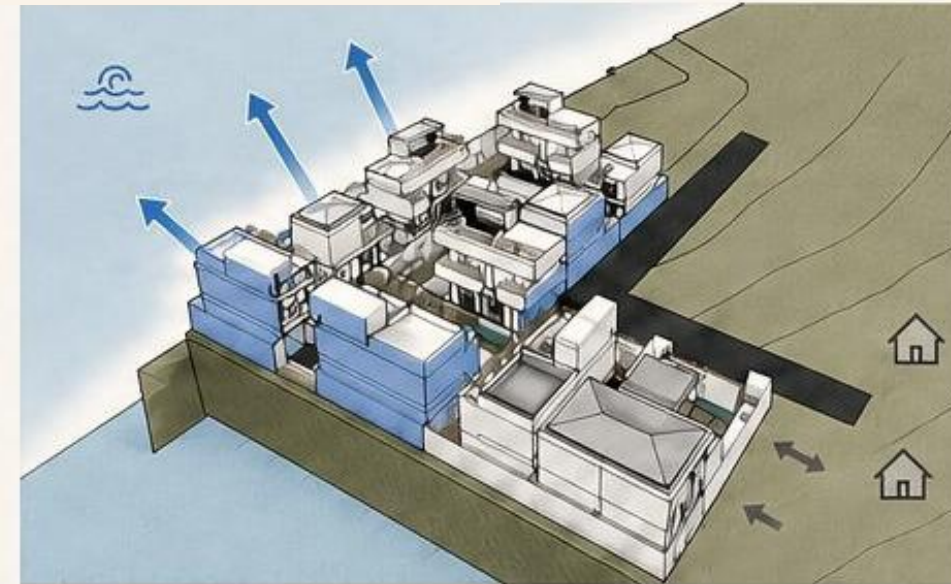
■ SOLID / PRIVACY

Maximizing ocean views on the top and side, while minimizing exposure to neighboring areas.



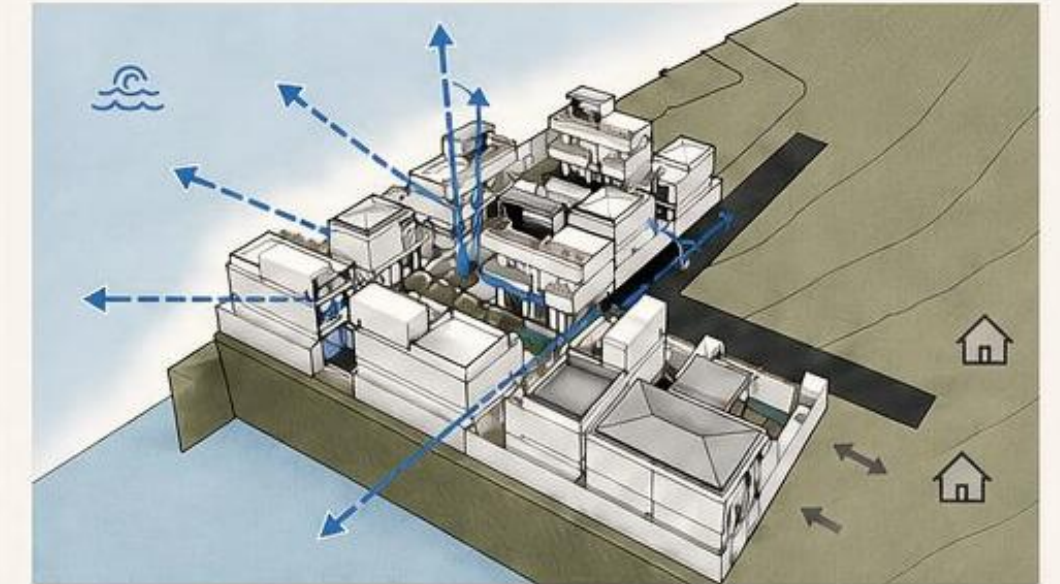
(00) IDENTIFY - CONTEXT

Top and side edges have ocean view potential. Other sides are neighboring areas.



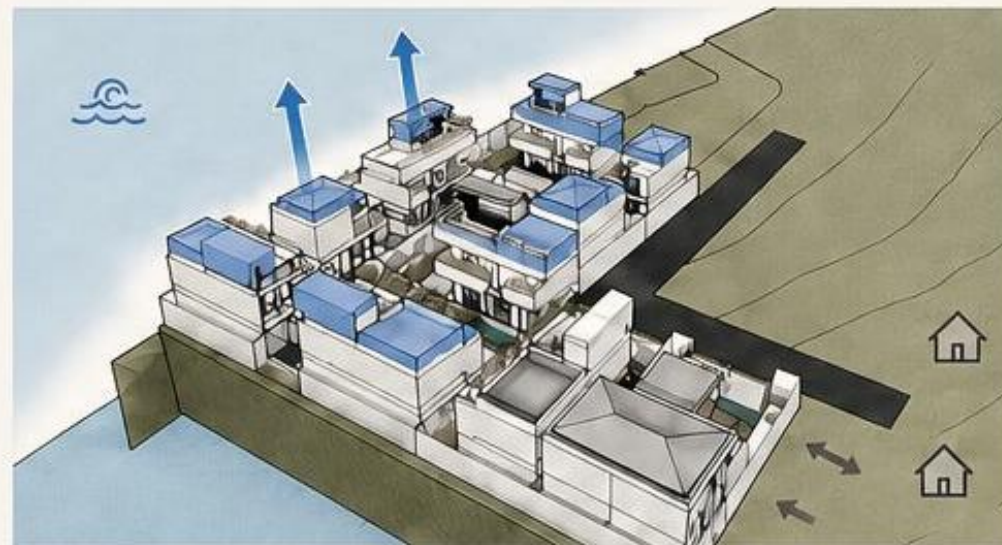
(01) ORIENT - ALIGN TO VIEW

Direct building facades and main openings toward the ocean to maximize view quality.



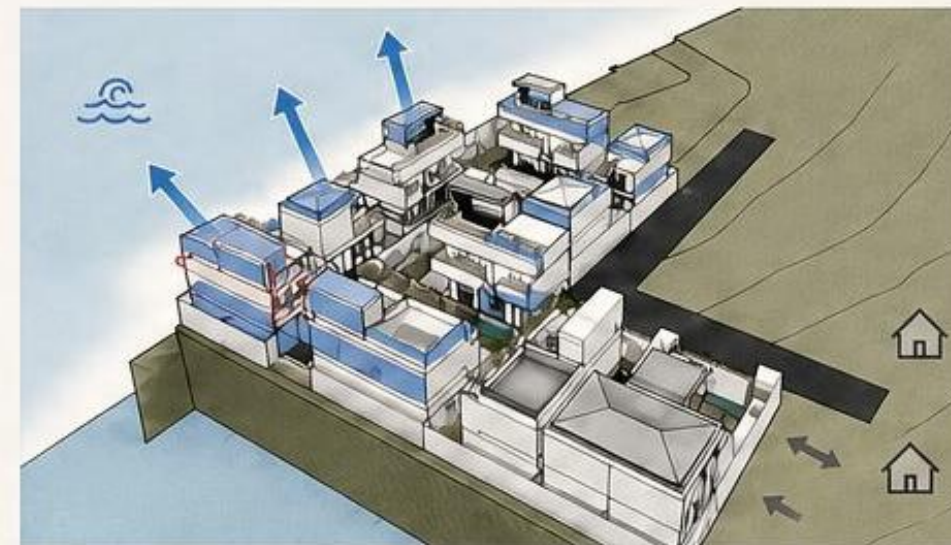
(02) CARVE - CREATE VIEW CORRIDORS

Introduce voids and gaps between masses to create visual corridors and improve openness.



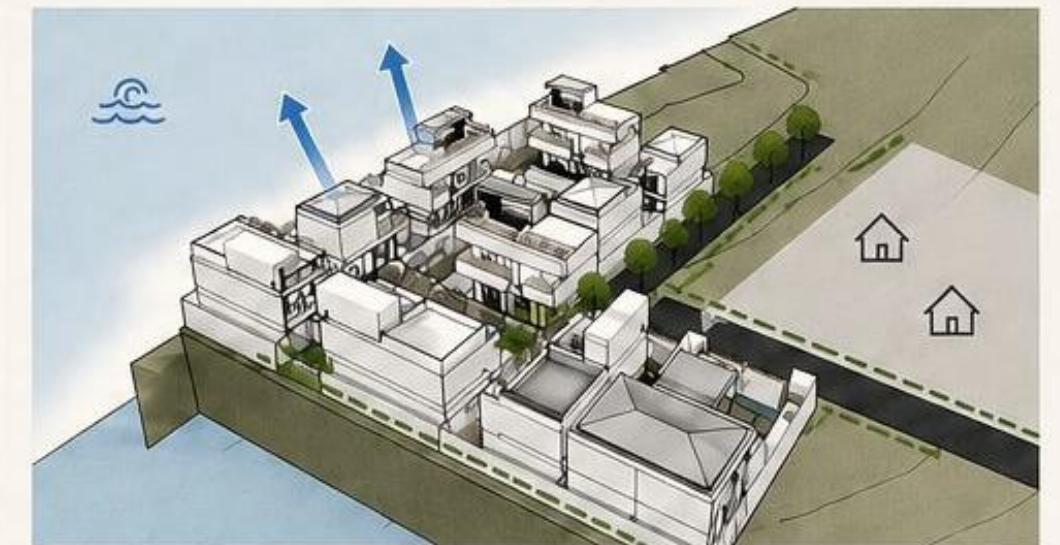
(03) STEP - ENSURE VISIBILITY

Create stepped building heights from the ocean side so each unit maintains an unobstructed view.



(04) FRAME - MAXIMIZE VIEW

Enhance ocean-facing experience with balconies, rooftops, and wide openings.



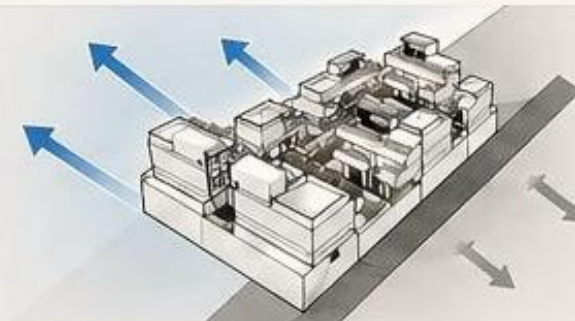
(05) BUFFER - PROTECT PRIVACY

Limit openings toward neighboring side and add solid wall as a privacy buffer.



OCEAN VIEW

- Primary view direction
- Wide openings & balconies
- Open visual connection



NEIGHBOR VIEW (OTHER SIDES)

- Limited openings
- Solid walls & green buffer
- Privacy-focused design

DESIGN STRATEGIES



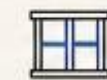
ORIENT
toward ocean



CARVE
create view corridors



STEP
ensure visibility



FRAME
maximize view



BUFFER
protect privacy

II · CHAPTER

Plan

Site & masterplan

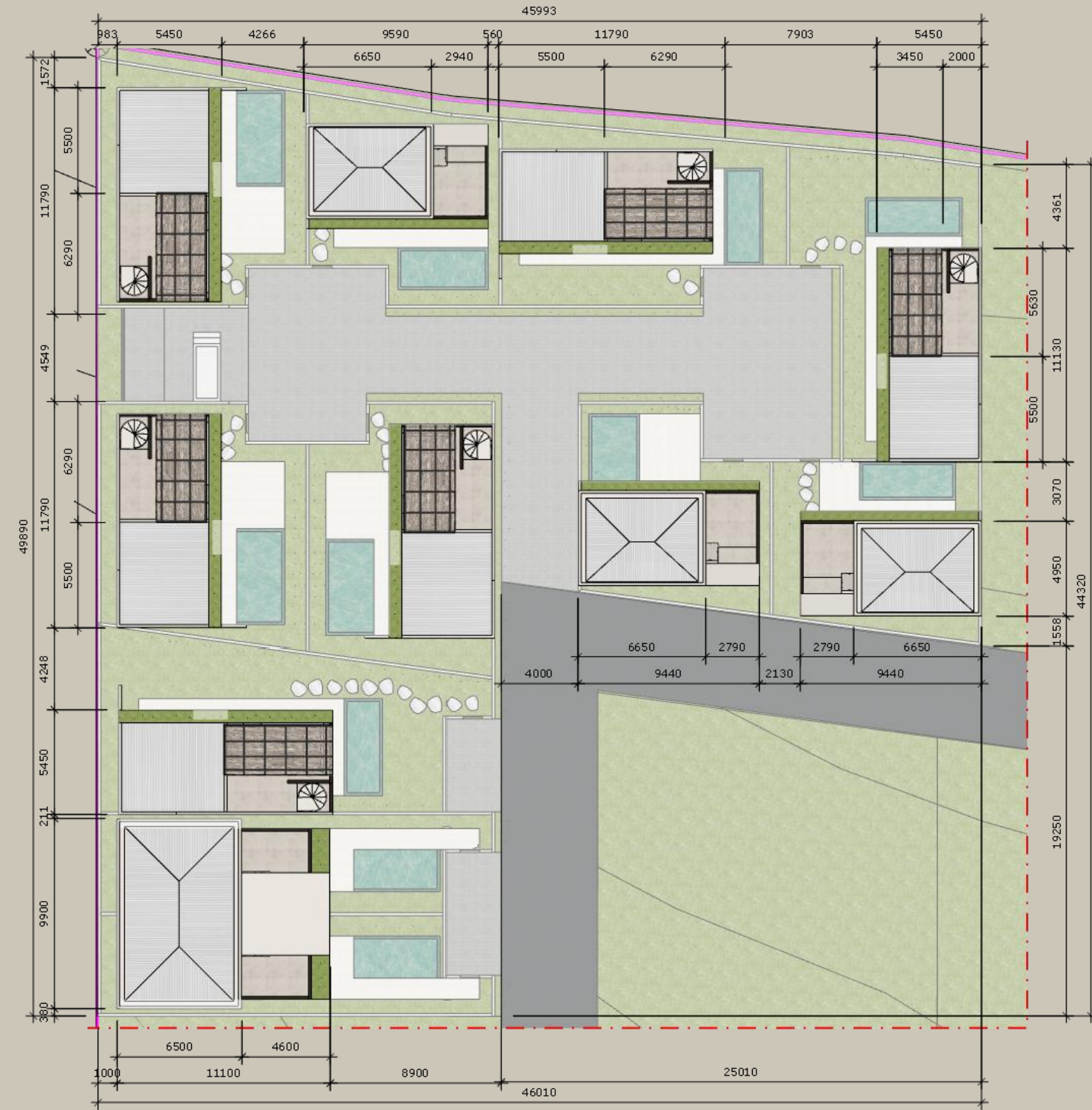
This development consists of several building types. The first type features three bedrooms, while the second type includes two bedrooms. Each unit is designed with one bedroom on the ground floor, along with a private pool, living area, and kitchen. The ground level is complemented by a spacious garden, creating a strong connection between indoor and outdoor spaces.



Moving up to the first floor, there are additional bedrooms accompanied by balconies. These balconies are enclosed with wood railings, allowing for unobstructed views and maximizing natural light.



For the three-bedroom units, the design is enhanced with a rooftop area. This space offers expansive views, providing a comfortable and relaxing environment for users.



III · CHAPTER

Perspective

First impressions











IV · CHAPTER

Entrance

Arrival sequence

Bel Rive

BALANGAN · ELEVEN VILLAS



ENTRANCE



V · CHAPTER

Three Bedroom Villas

Lux 5 A,B,C & Lux 6 A,B

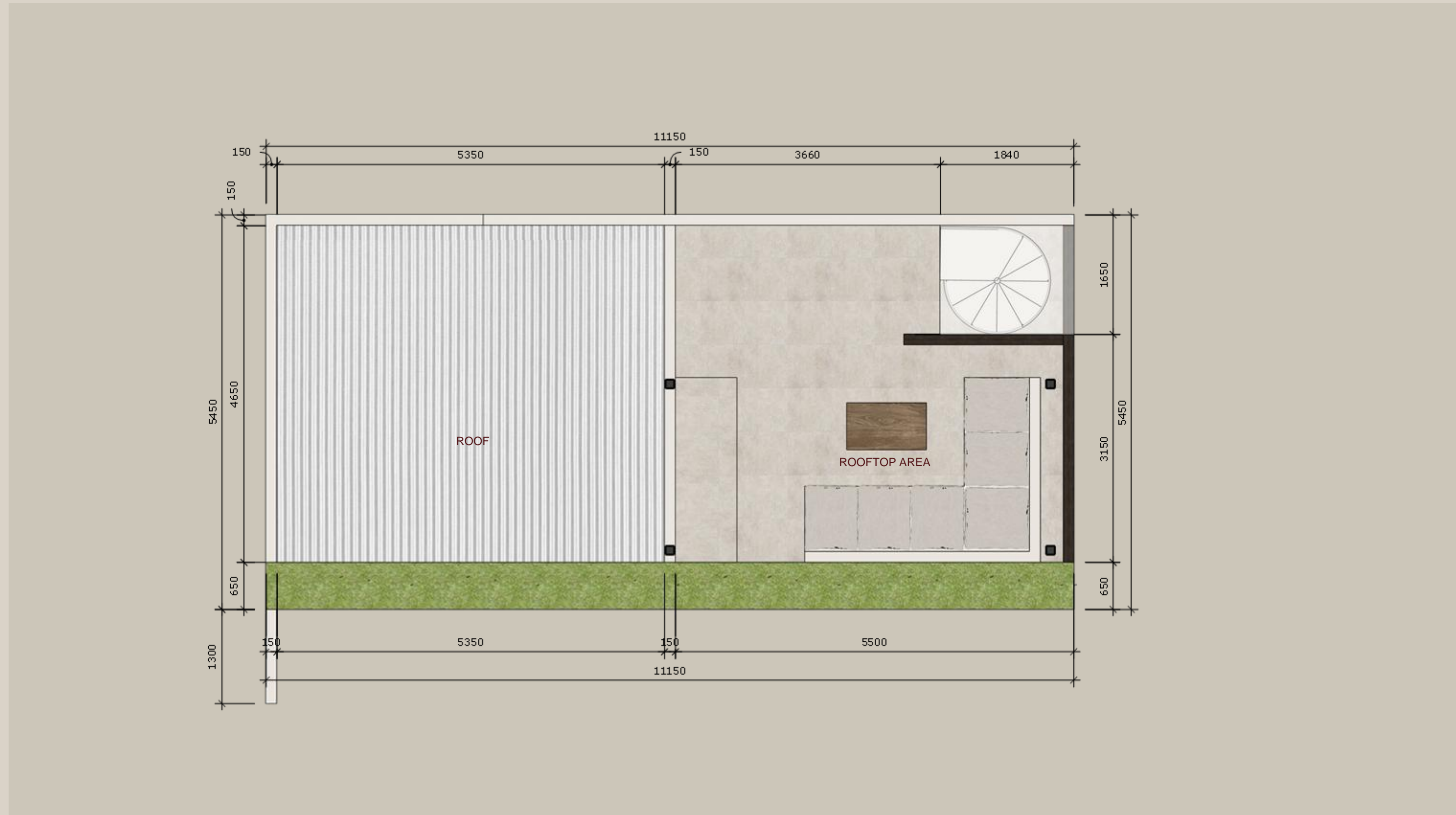
Entering the ground floor, you are welcomed by an open-plan living area that seamlessly integrates with the dining area and kitchen. This space is surrounded by glass doors, allowing natural light to flow throughout the interior. In addition to the living area, there is a bedroom and a bathroom on this floor, providing convenient and easy access to the main living space.

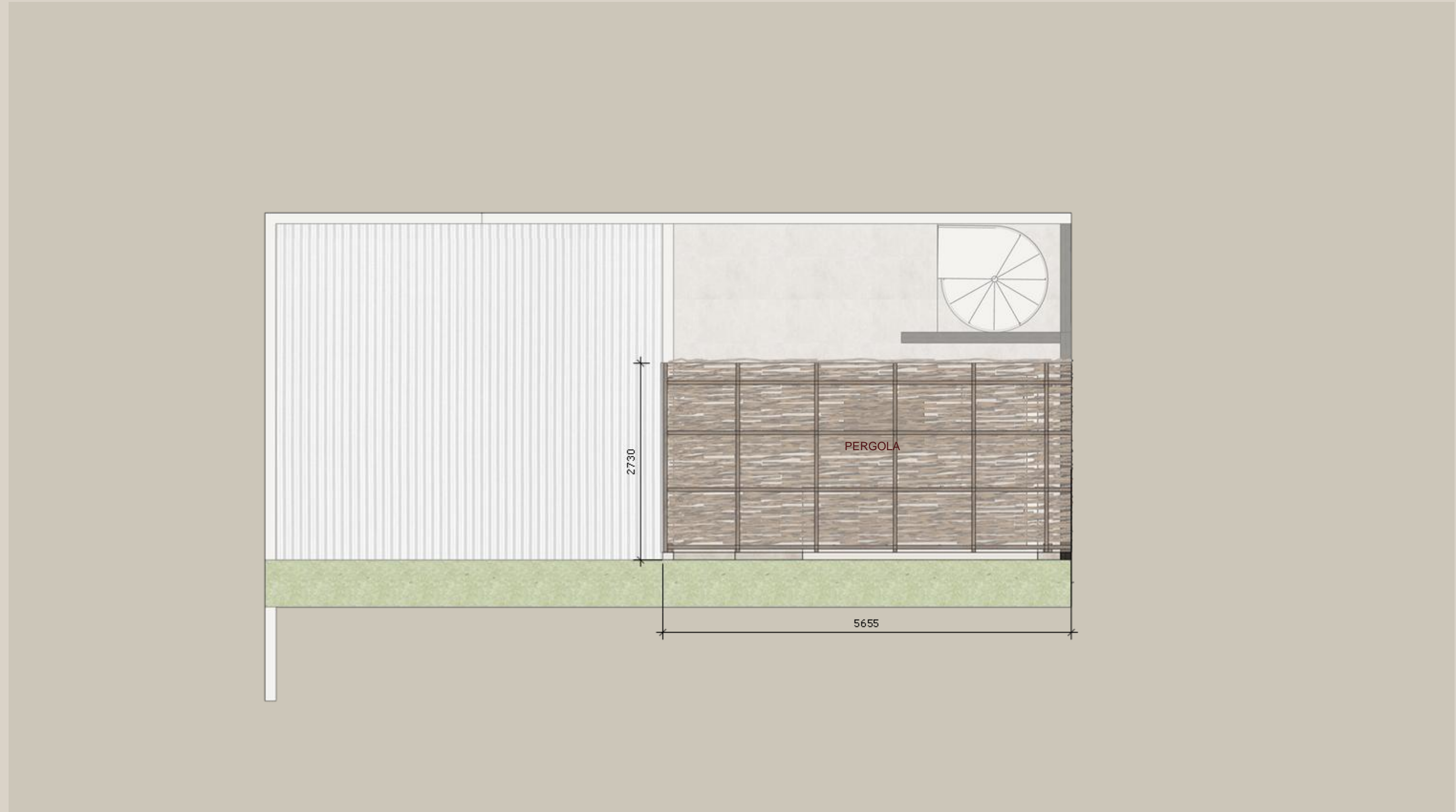


Moving up to the upper floor, there are two bedrooms, each equipped with an en-suite bathroom. A planter box is placed in front of the rooms, creating a fresh and calming atmosphere.



Continuing to the rooftop, there is a relaxing area with a wide, open view, surrounded by planter boxes that enhance the greenery and overall ambiance.













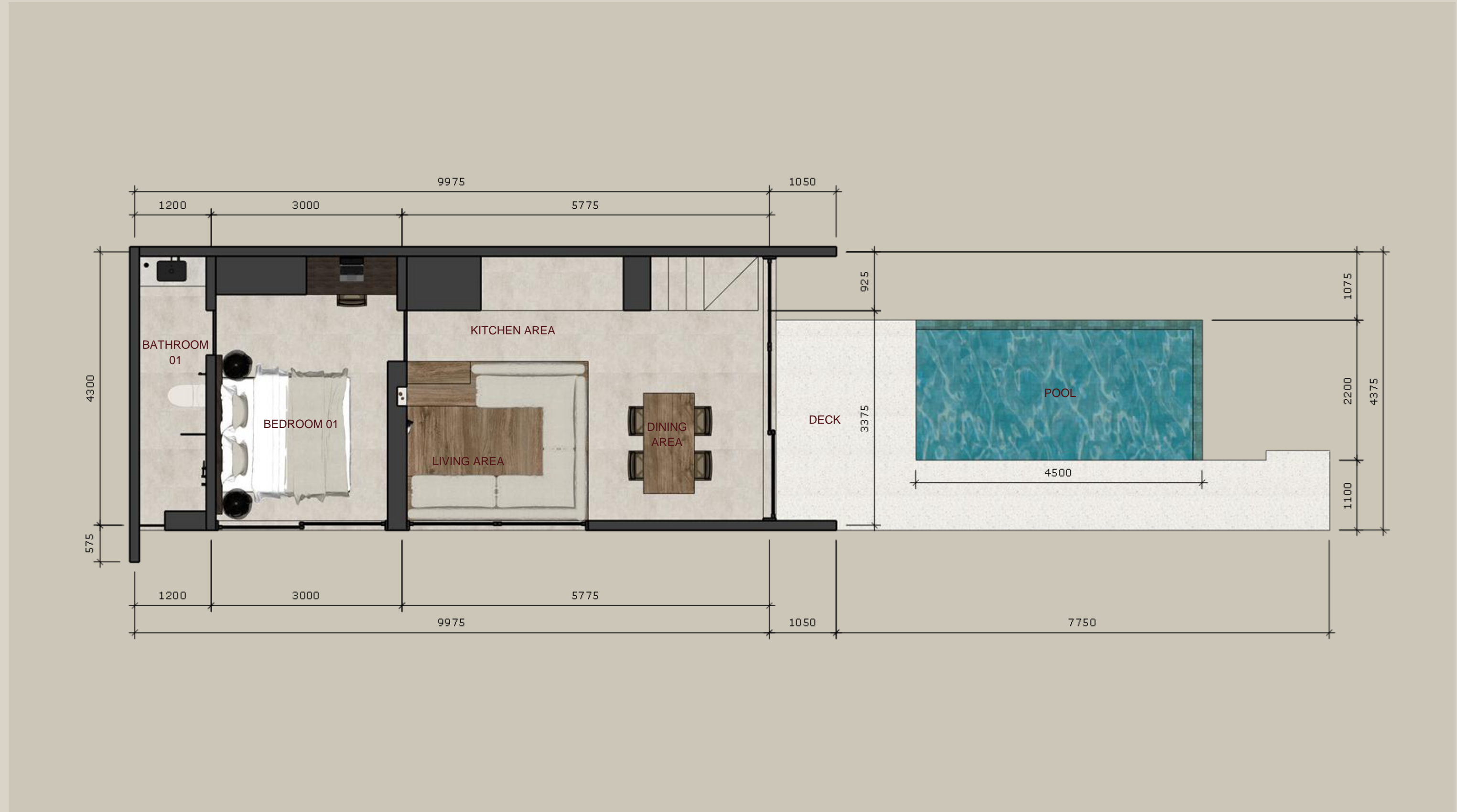


VI · CHAPTER

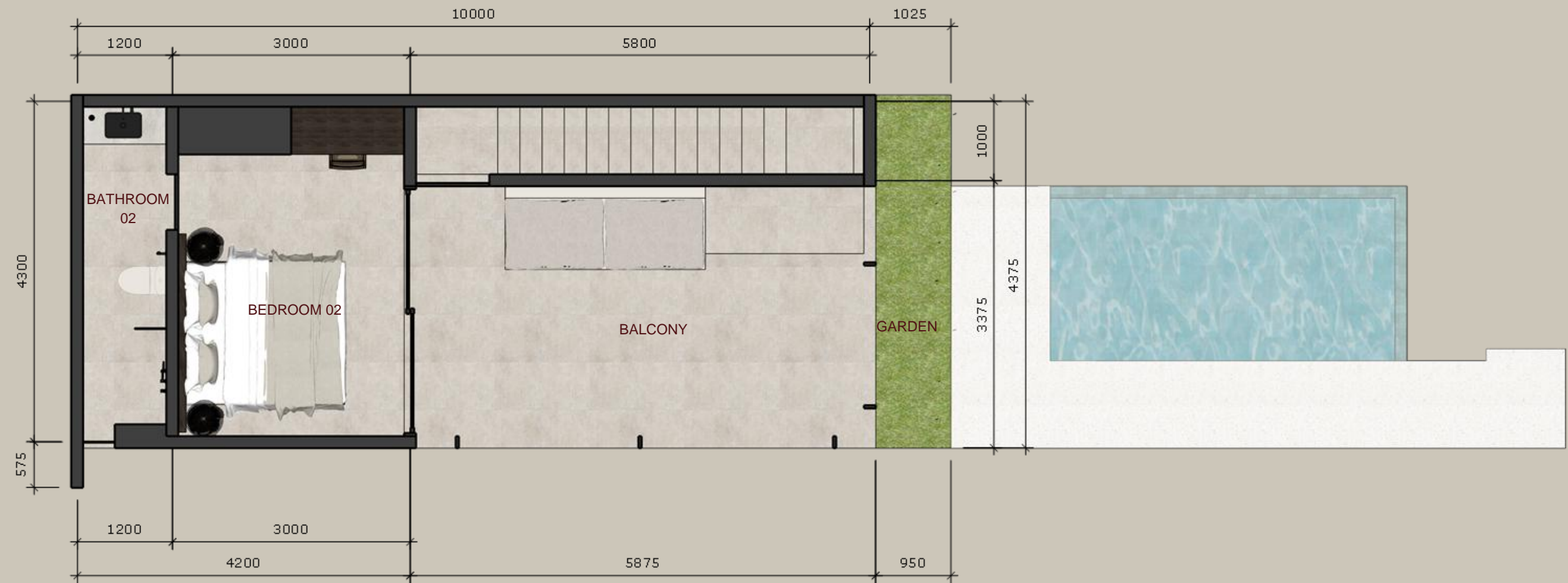
Two Bedroom Villas

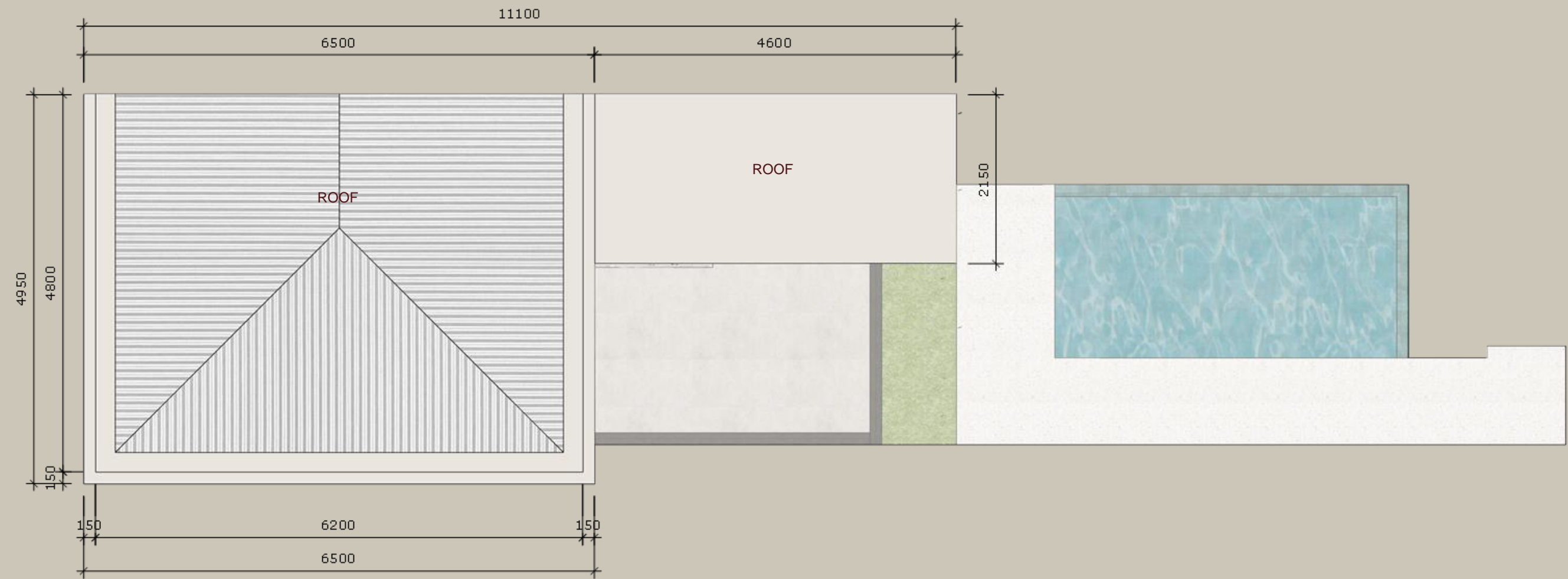
Lux 4 A,B

Entering the ground floor, you are welcomed by an open-plan living area that seamlessly integrates with the dining area and kitchen. This space is surrounded by glass doors, allowing natural light to flow throughout the interior. In addition to the living area, there is a bedroom and a bathroom on this floor, providing convenient and easy access to the main living space.



Moving up to the upper floor, there are one bedroom with an en-suite bathroom. A planter box is placed in front of the rooms, creating a fresh and calming atmosphere.













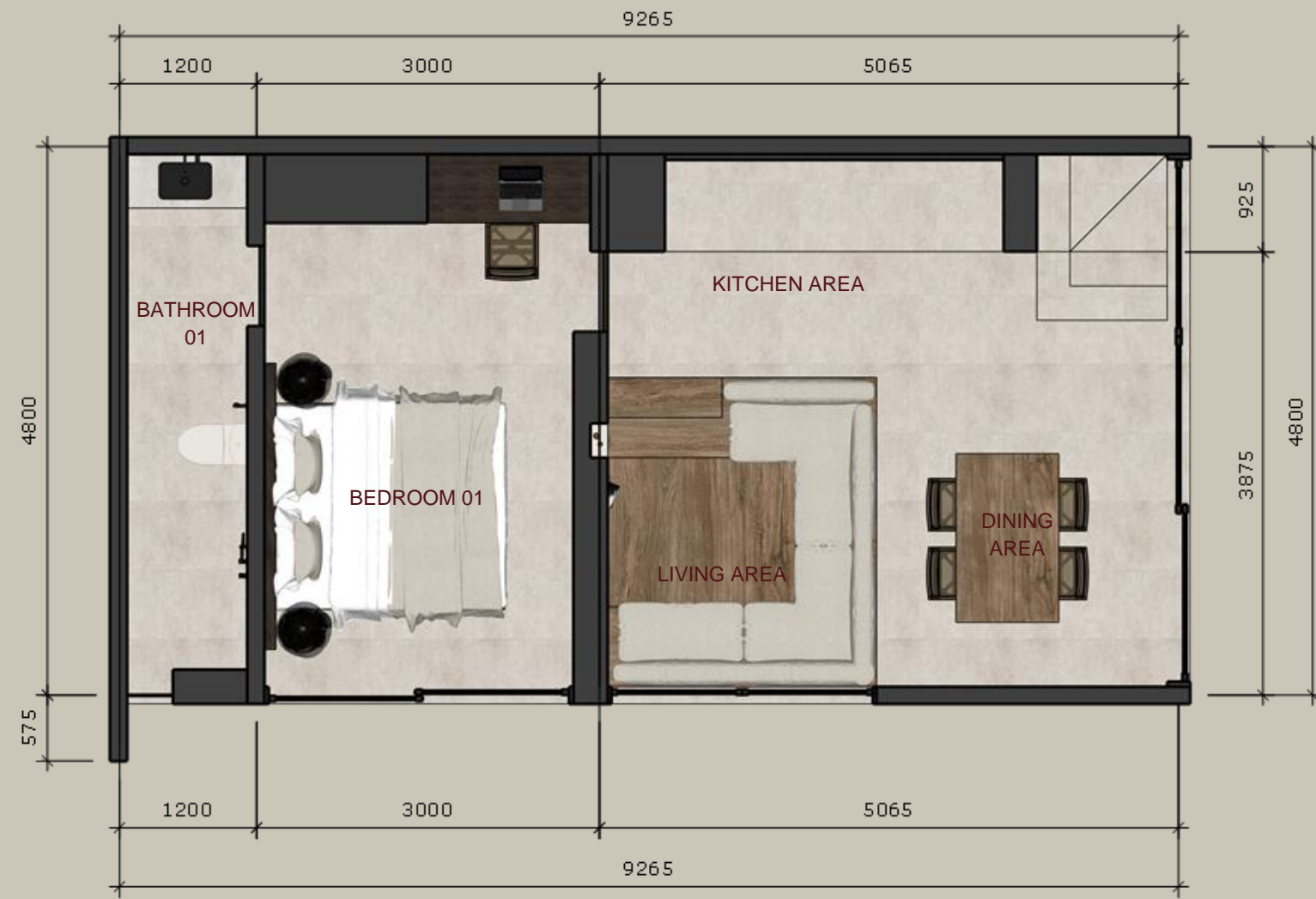


VII · CHAPTER

Two Bedroom Villas

Lux 5 D & 6 C,D

Entering the ground floor, you are welcomed by an open-plan living area that seamlessly integrates with the dining area and kitchen. This space is surrounded by glass doors, allowing natural light to flow throughout the interior. In addition to the living area, there is a bedroom and a bathroom on this floor, providing convenient and easy access to the main living space.



Moving up to the upper floor, there are one bedroom with an en-suite bathroom. A planter box is placed in front of the rooms, creating a fresh and calming atmosphere.



