

Unit Plans



1 Bedroom

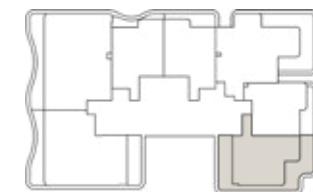
1BHK - TYPE A

1	Kitchen	2.5m x 2.5m
2	Living & Dining	6.7m x 3.4m
3	PWD Room	1.2m x 1.9m
4	Bedroom	3.3m x 3.3m
5	Bath	2.1m x 2.2m
6	Dressing Room	1.5m x 1.1m
7	Balcony	11.5m x 7.7m

	From	To
Suite Area	65.75 sq.m	65.75 sq.m
Balcony Area	38.51 sq.m	40.68 sq.m
Total Area	104.26 sq.m	106.43 sq.m



Level 2



Key Plan

Disclaimer: All dimensions, materials and drawings are approximate. Information is subject to change without notice, at the developer's absolute discretion. The actual area may vary from the stated area. Drawings are not to scale. All images used are for illustrative purposes only and do not represent the actual size, features, specifications, fittings and furnishings. The developer reserves the right to make revisions/alterations, at the absolute discretion without any liability whatsoever.

1 Bedroom

1BHK - TYPE B

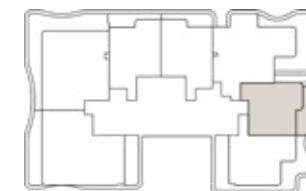


1	Kitchen	3.1m x 2.3m
2	Living & Dining	5.5m x 3.6m
3	PWD Room	1.3m x 1.7m
4	Bedroom	3.5m x 3.6m
5	Bath	3m x 1.8m
6	Dressing Room	1m x 1.1m
7	Balcony	2m x 7.1m

	From	To
Suite Area	57.14 sq.m	57.14 sq.m
Balcony Area	10.43 sq.m	10.64 sq.m
Total Area	67.57 sq.m	67.78 sq.m



Level 12



Key Plan



1 Bedroom

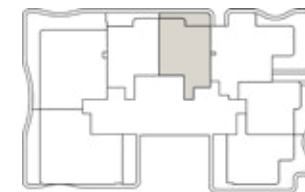
1BHK - TYPE C

1	Kitchen	2.6m x 2.3m
2	Living & Dining	5.8m x 3.6m
3	PWD Room	1.7m x 1.6m
4	Bedroom	6.1m x 3.5m
5	Bath	2.7m x 2.3m
6	Dressing Room	1m x 1.7m
7	Balcony	1.8m x 7.3m

Suite Area	64.66 sq.m
Balcony Area	9.64 sq.m
Total Area	74.3 sq.m



Level 12



Key Plan

1 Bedroom

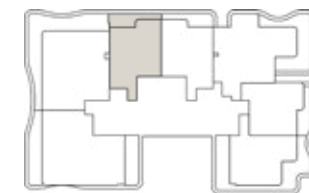
1BHK - TYPE D



1	Kitchen	2.6m x 2.4m
2	Living & Dining	5.8m x 3.7m
3	PWD Room	1.7m x 1.5m
4	Bedroom	6.1m x 3.4m
5	Bath	2.7m x 2.2m
6	Dressing Room	1m x 1.6m
7	Balcony	1.9m x 7.6m

	From	To
Suite Area	65.22 sq.m	65.24 sq.m
Balcony Area	6.20 sq.m	10.37 sq.m
Total Area	71.42 sq.m	75.61 sq.m

Level 12



Key Plan



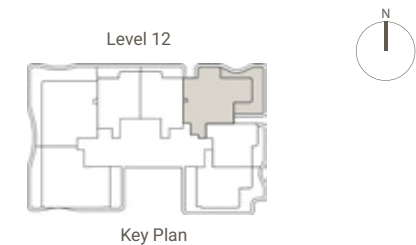
2 Bedroom

2BHK - TYPE A



1	Kitchen	2.6m x 3.5m
2	Living & Dining	6m x 3.6m
3	PWD Room	1.2m x 1.9m
4	Bedroom1	3.4m x 3.9m
5	Bath1	1.8m x 2.3m
6	Dressing Room	1.8m x 1m
7	Bedroom 2	3.6m x 3.8m
8	Bath 2	2.4m x 2m
9	Iron	2.5m x 2.1m
10	Laundry	1.3m x 1.8m
11	Balcony	7.4m x 8.2m

	From	To
Suite Area	97.3 sq.m	97.3 sq.m
Balcony Area	28.8 sq.m	32.5 sq.m
Total Area	126.1 sq.m	129.8 sq.m



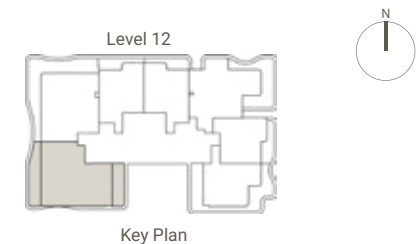
2 Bedroom

2BHK - TYPE B



1	Kitchen	4m x 2.4m
2	Living & Dining	7m x 3.8m
3	PWD Room	1.7m x 1.2m
4	Bedroom 1	5.2m x 4m
5	Bath 1	1.8m x 2.5m
6	Bedroom 2	3.6m x 4m
7	Bath 2	1.8m x 2.5m
8	Maid's room	3.6m x 2.7m
9	Bath 3	2.2m x 1.5m
10	Balcony 1	2m x 10.7m
11	Balcony 2	2m x 7m

	From	To
Suite Area	108.1 sq.m	108.1 sq.m
Balcony Area	30.62 sq.m	33.91 sq.m
Total Area	138.72 sq.m	142.01 sq.m



Disclaimer: All dimensions, materials and drawings are approximate. Information is subject to change without notice, at the developer's absolute discretion. The actual area may vary from the stated area. Drawings are not to scale. All images used are for illustrative purposes only and do not represent the actual size, features, specifications, fittings and furnishings. The developer reserves the right to make revisions/alterations, at the absolute discretion without any liability whatsoever.

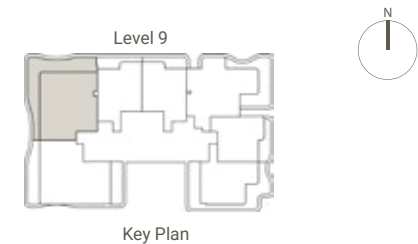
2 Bedroom

2BHK - TYPE C



1	Kitchen	3.6m x 2.8m
2	Living & Dining	3.7m x 7.2m
3	PWD Room	1.2m x 2.1m
4	Bedroom 1	3.6m x 5.8m
5	Bath 1	1.8m x 2.5m
6	Store	1.3m x 1m
7	Bedroom 2	3.6m x 3.5m
8	Bath 2	2.4m x 1.8m
9	Iron	2m x 2.1m
10	Laundry	1.2m x 2.1m
11	Balcony	13.7m x 11.4m

	From	To
Suite Area	103.16 sq.m	103.16 sq.m
Balcony Area	24.87 sq.m	43.81 sq.m
Total Area	128.03 sq.m	146.97 sq.m



Key Plan

Disclaimer: All dimensions, materials and drawings are approximate. Information is subject to change without notice, at the developer's absolute discretion. The actual area may vary from the stated area. Drawings are not to scale. All images used are for illustrative purposes only and do not represent the actual size, features, specifications, fittings and furnishings. The developer reserves the right to make revisions/alterations, at the absolute discretion without any liability whatsoever.

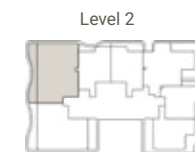
3 Bedroom

3BHK - TYPE A



1	Kitchen	2.4m x 6m
2	Living & Dining	3.7m x 7.2m
3	PWD Room	1.3m x 2m
4	Bedroom 1	3.7m x 5.1m
5	Bath 1	2.6m x 1.8m
6	Bedroom 2	4.4m x 3.5m
7	Bath 2	2.7m x 2.1m
8	Bedroom 3	3.4m x 6m
9	Bath 3	2.2m x 2.1m
10	Iron	2.3m x 2.1m
11	Laundry	1.2m x 2.1m
12	Balcony	13.7m x 2m

	From	To
Suite Area	126.73 sq.m	126.73 sq.m
Balcony Area	21.96 sq.m	22.66 sq.m
Total Area	148.69 sq.m	149.39 sq.m



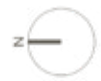
Level 2

Key Plan



Disclaimer: All dimensions, materials and drawings are approximate. Information is subject to change without notice, at the developer's absolute discretion. The actual area may vary from the stated area. Drawings are not to scale. All images used are for illustrative purposes only and do not represent the actual size, features, specifications, fittings and furnishings. The developer reserves the right to make revisions/alterations, at the absolute discretion without any liability whatsoever.

Floor Plans



Ground floor plan

- 1 MAIN ENTRANCE
- 2 LOUNGE
- 3 RECEPTION
- 4 LIFT LOBBY
- 5 WC
- 6 SHOWROOM 1
- 7 PEDESTRIAN PATHWAY
- 8 PARKING
- 9 ACCESS TO PARKING ENTRANCE
- 10 ACCESS TO UPPER PARKING
- 11 ACCESS TO LOWER PARKING
- 12 CO-WORKING SPACE

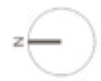




First floor plan

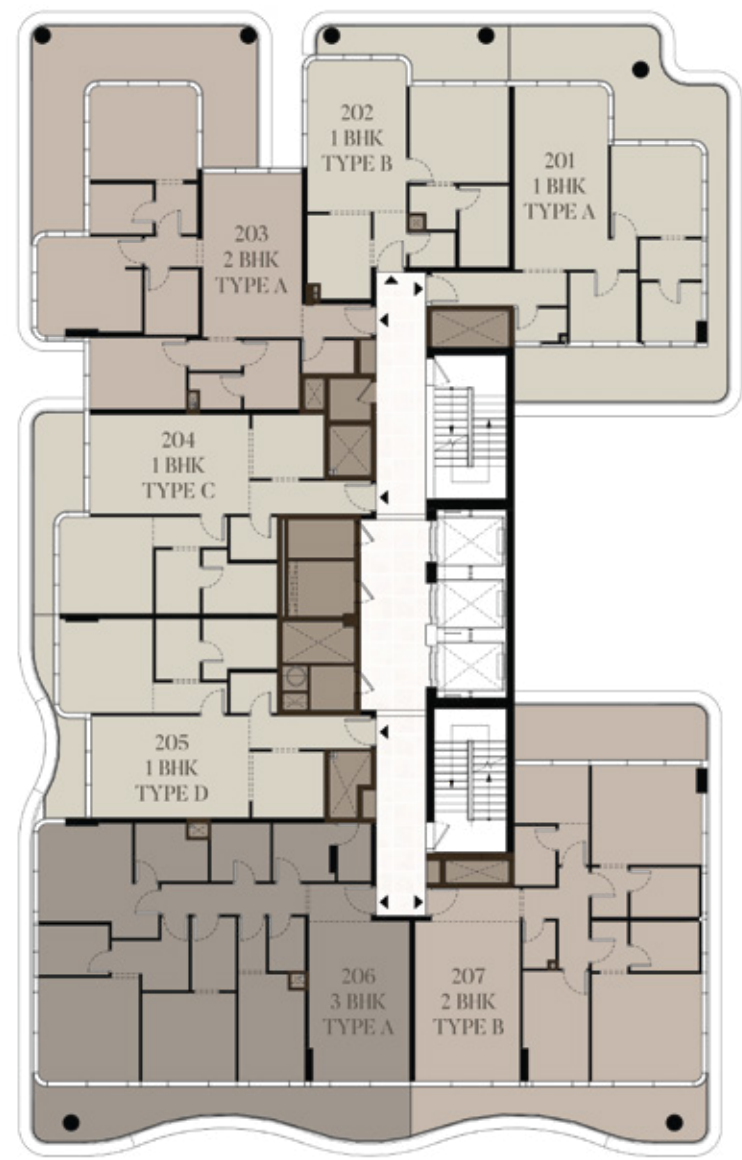
- 1 GYM
- 2 TOILETS
- 3 LOCKERS
- 4 LIFT LOBBY
- 5 POOL
- 6 POOL DECK
- 7 TERRACE

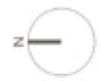




Second floor plan

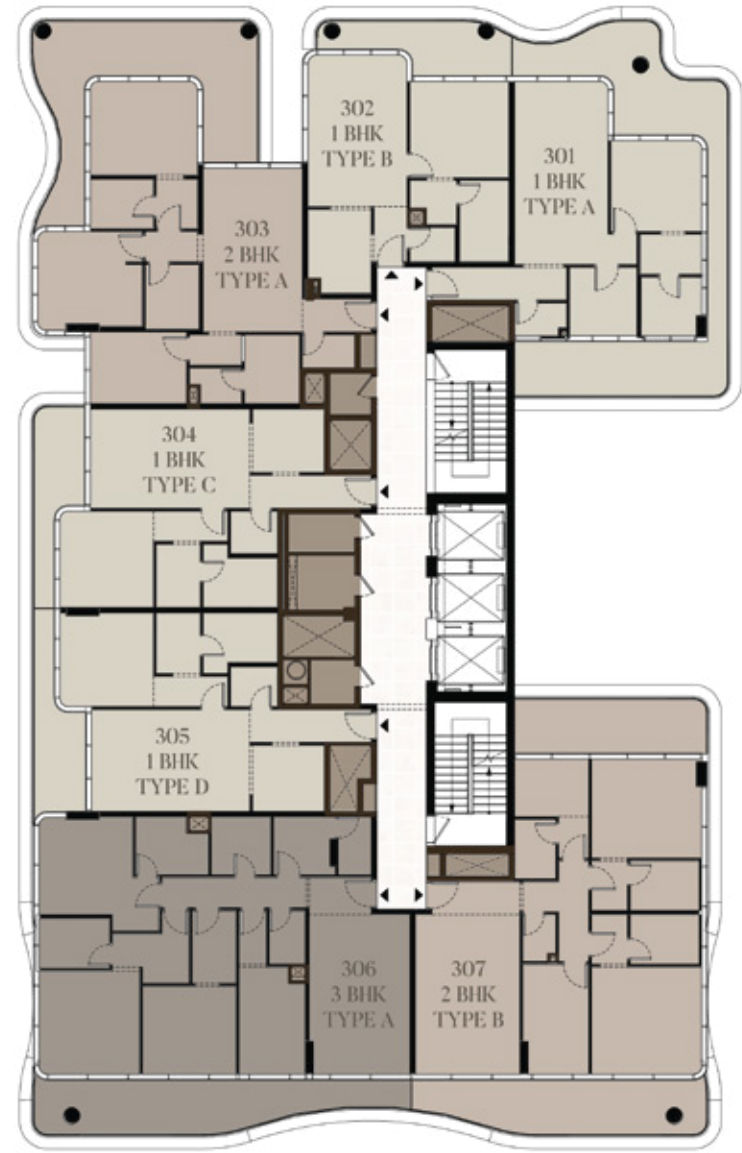
- 1 BEDROOM
- 2 BEDROOM
- 3 BEDROOM

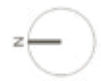




Third floor plan

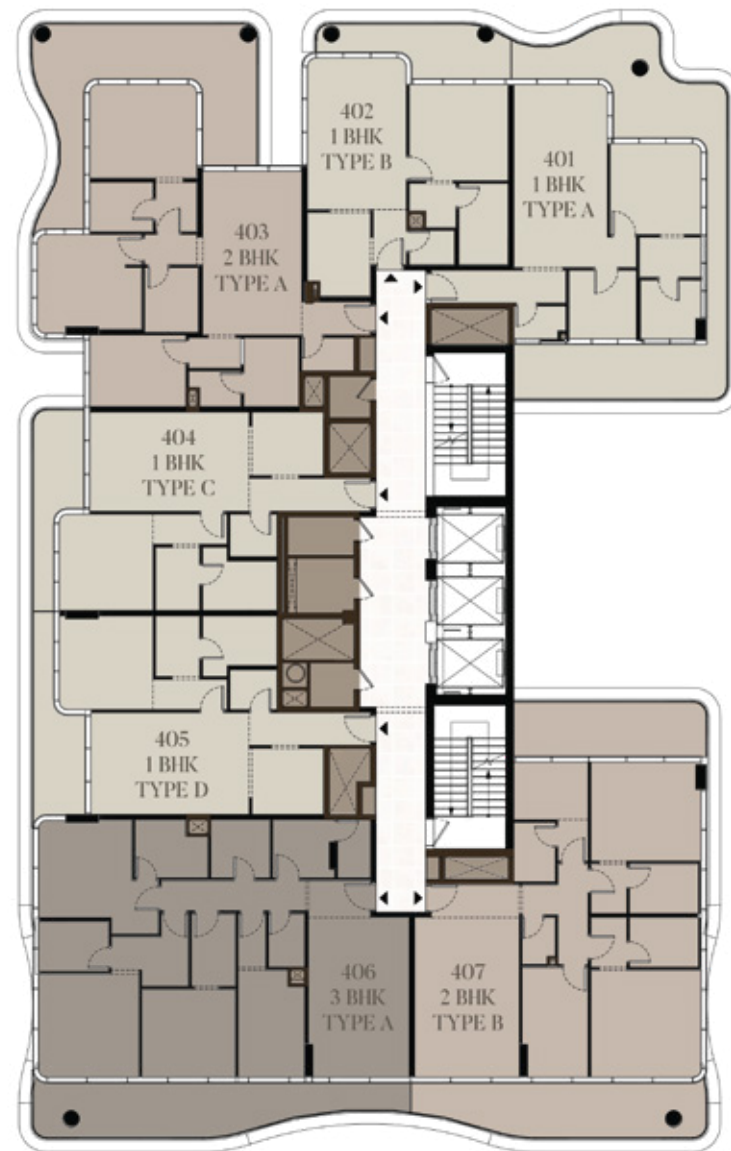
- 1 BEDROOM
- 2 BEDROOM
- 3 BEDROOM

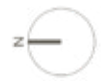




Fourth floor plan

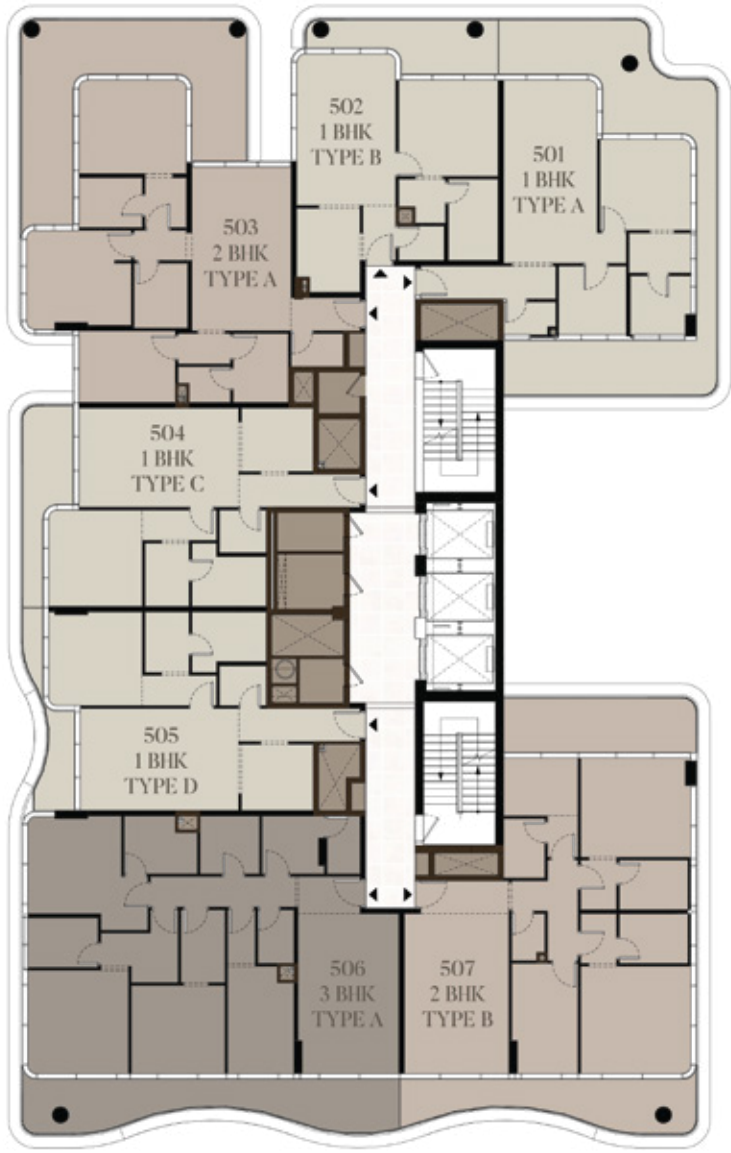
- 1 BEDROOM
- 2 BEDROOM
- 3 BEDROOM

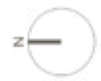




Fifth floor plan

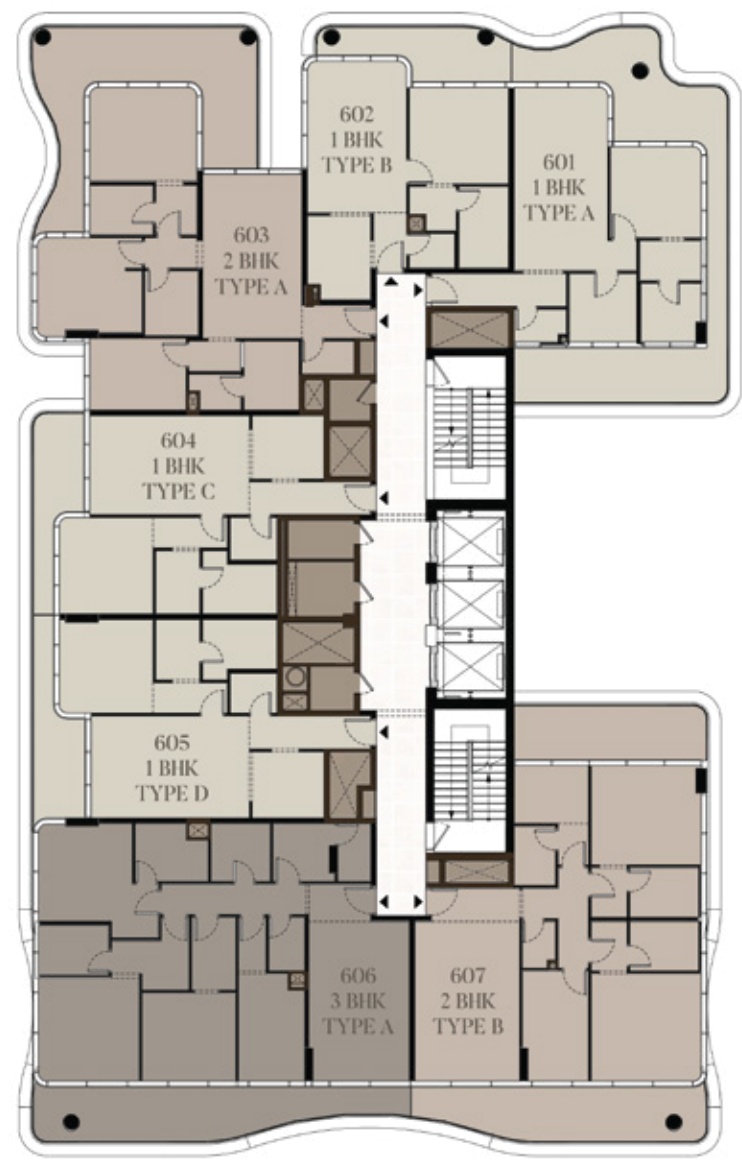
- 1 BEDROOM
- 2 BEDROOM
- 3 BEDROOM

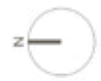




Sixth floor plan

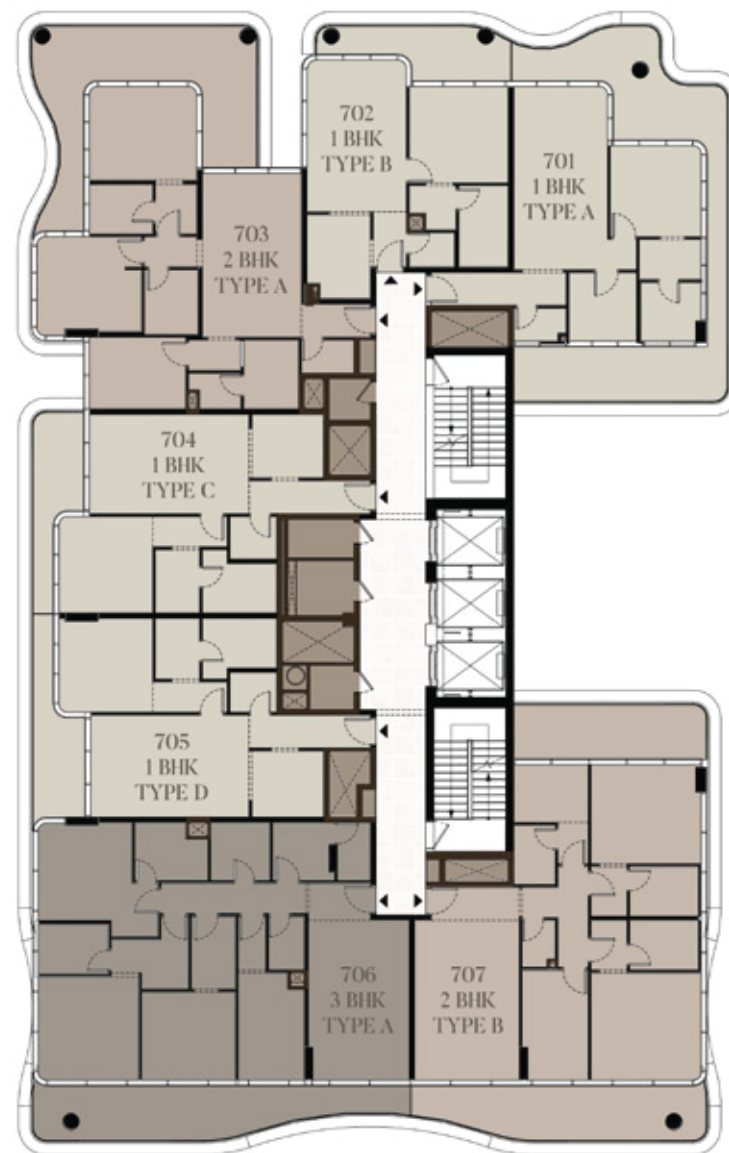
- 1 BEDROOM
- 2 BEDROOM
- 3 BEDROOM

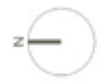




Seventh floor plan

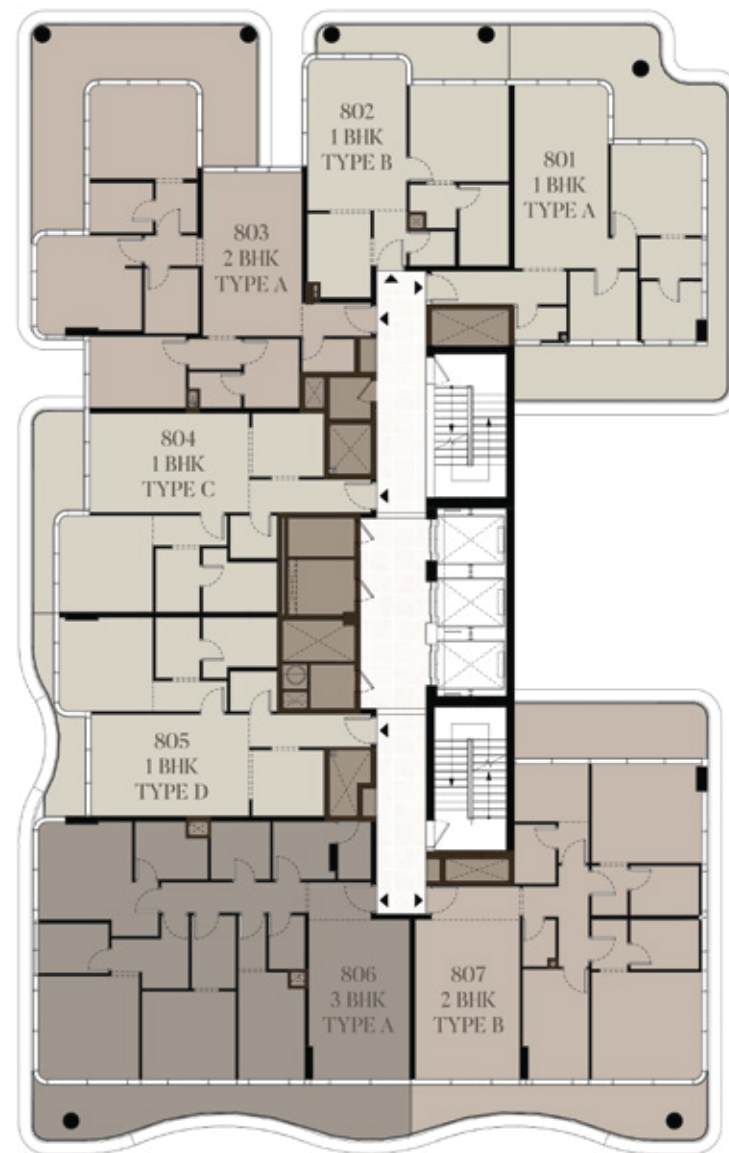
- 1 BEDROOM
- 2 BEDROOM
- 3 BEDROOM

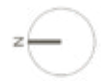




Eighth floor plan

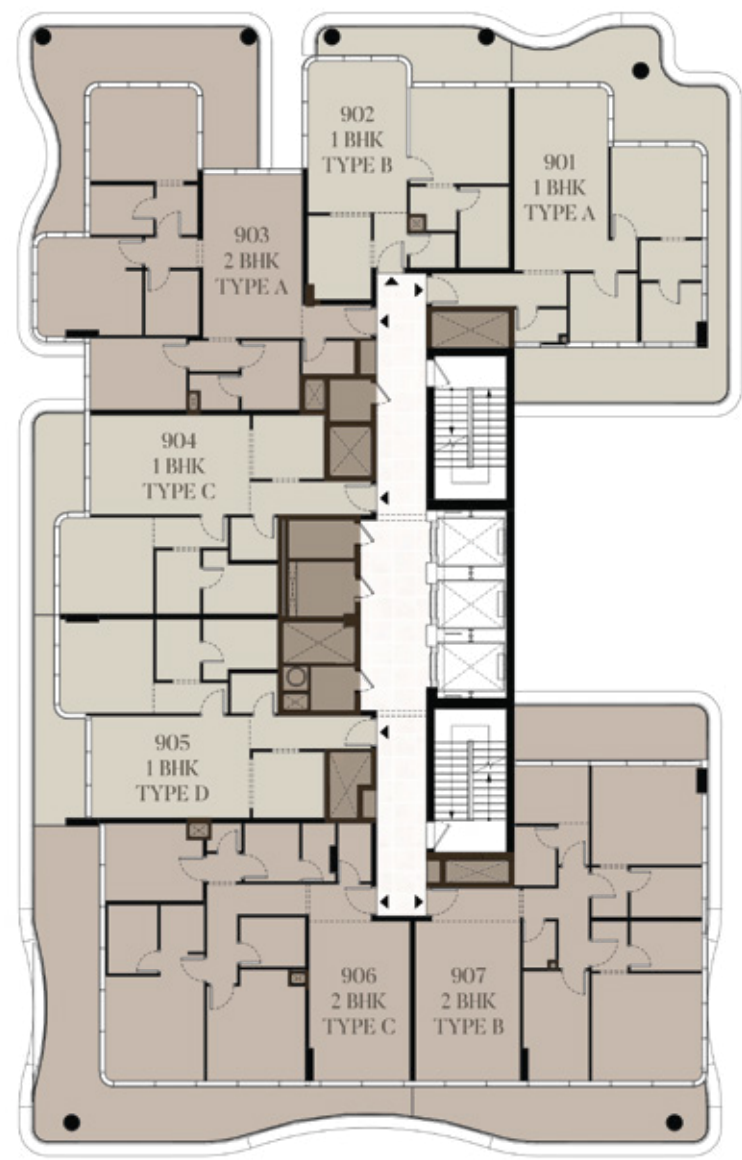
- 1 BEDROOM
- 2 BEDROOM
- 3 BEDROOM

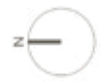




Ninth floor plan

- 1 BEDROOM
- 2 BEDROOM

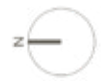




Tenth floor plan

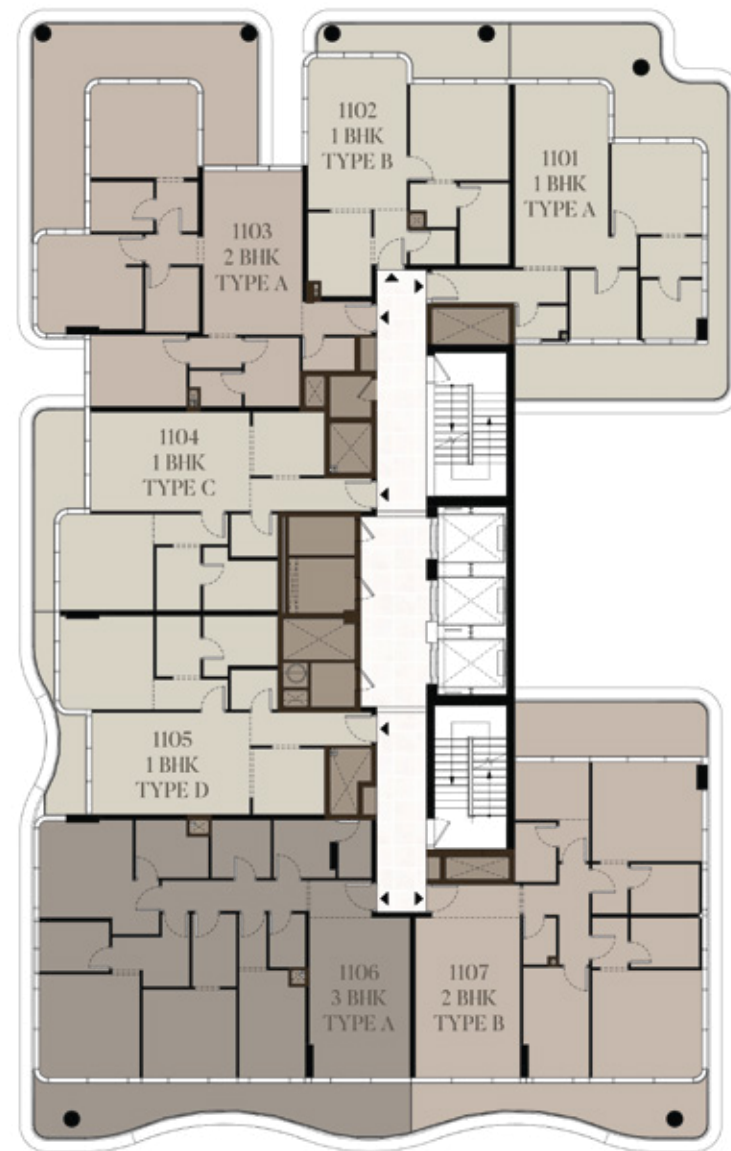
- 1 BEDROOM
- 2 BEDROOM

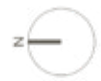




Eleventh floor plan

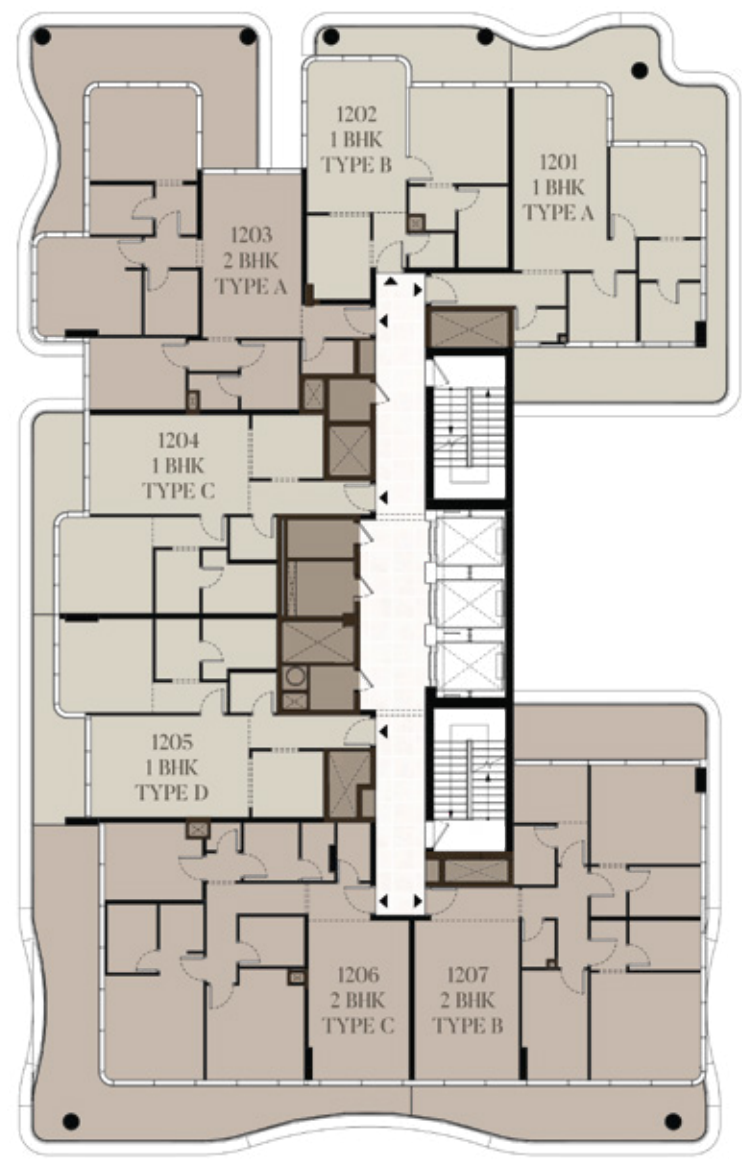
- 1 BEDROOM
- 2 BEDROOM
- 3 BEDROOM

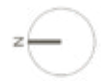




Twelfth floor plan

- 1 BEDROOM
- 2 BEDROOM

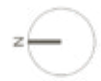




Thirteenth floor plan

- 1 BEDROOM
- 2 BEDROOM





Fourteenth floor plan

- 1 BEDROOM
- 2 BEDROOM
- 3 BEDROOM

