

S O F I T E L

RESIDENCES DOWNTOWN DUBAI



First floor plan



First Floor Plan

S O F I T E L

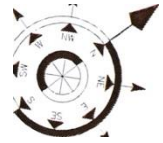
RESIDENCES DOWNTOWN DUBAI



(2,4,6 & 8) *Typical Floor Plan*

SOFITEL

RESIDENCES DOWNTOWN DUBAI



(2, 4, 6 & 8) Typical Floor Plan (Enlarge)

S O F I T E L

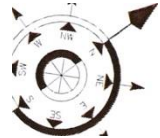
RESIDENCES DOWNTOWN DUBAI



(3,5 & 7) *Typical Floor Plan*

SOFITEL

RESIDENCES DOWNTOWN DUBAI



(3,5 & 7) Typical Floor Plan (Enlarge)

S O F I T E L

RESIDENCES DOWNTOWN DUBAI



P e n t h o u s e (9 & 1 1)
F l o o r P l a n

SOFITEL

RESIDENCES DOWNTOWN DUBAI



Penthouse (9 & 11) Floor Plan

S O F I T E L

RESIDENCES DOWNTOWN DUBAI



P e n t h o u s e (10)
F l o o r P l a n

SOFITEL

RESIDENCES DOWNTOWN DUBAI



Penthouse (10) Floor Plan

S O F I T E L

RESIDENCES DOWNTOWN DUBAI



One Bedroom Residences

Type A, B, C L 01 - 08

SOFITEL

RESIDENCES DOWNTOWN DUBAI

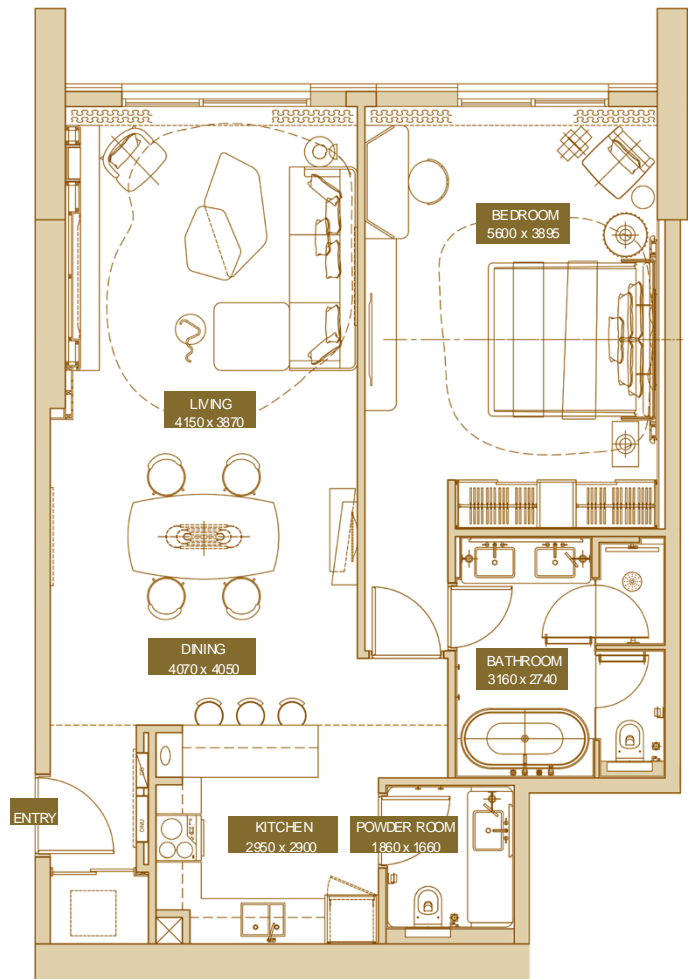
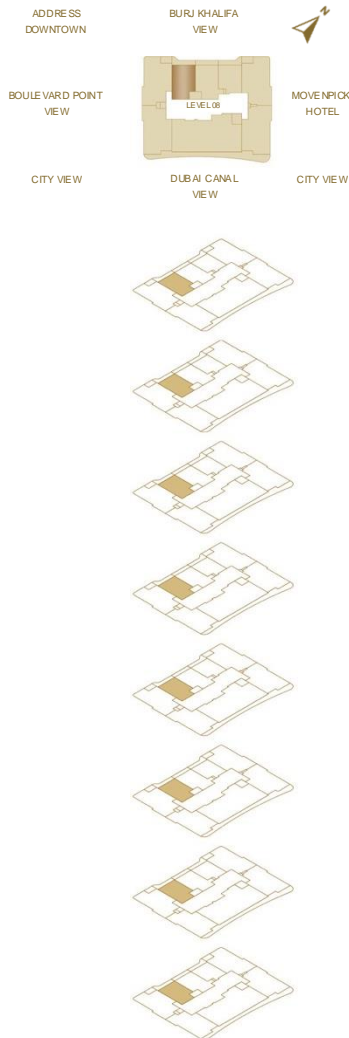


1 BR - TYPE A

1 BED APARTMENT

TOTAL AREA

85.11 SQ.M. 916.11 SQ.FT.



UNIT 802

TOTAL AREA-

85.11 SQ. M. / 916.11 SQ.FT.

Disclaimer: Please note this floor plan is for marketing purposes and is to be used as a guide only. All efforts have been made to ensure its accuracy however changes may be made during the development process and dimensions, fixtures, fittings, finishes and specifications are subject to change without notice. Dimensions may vary.

SOFITEL

RESIDENCES DOWNTOWN DUBAI

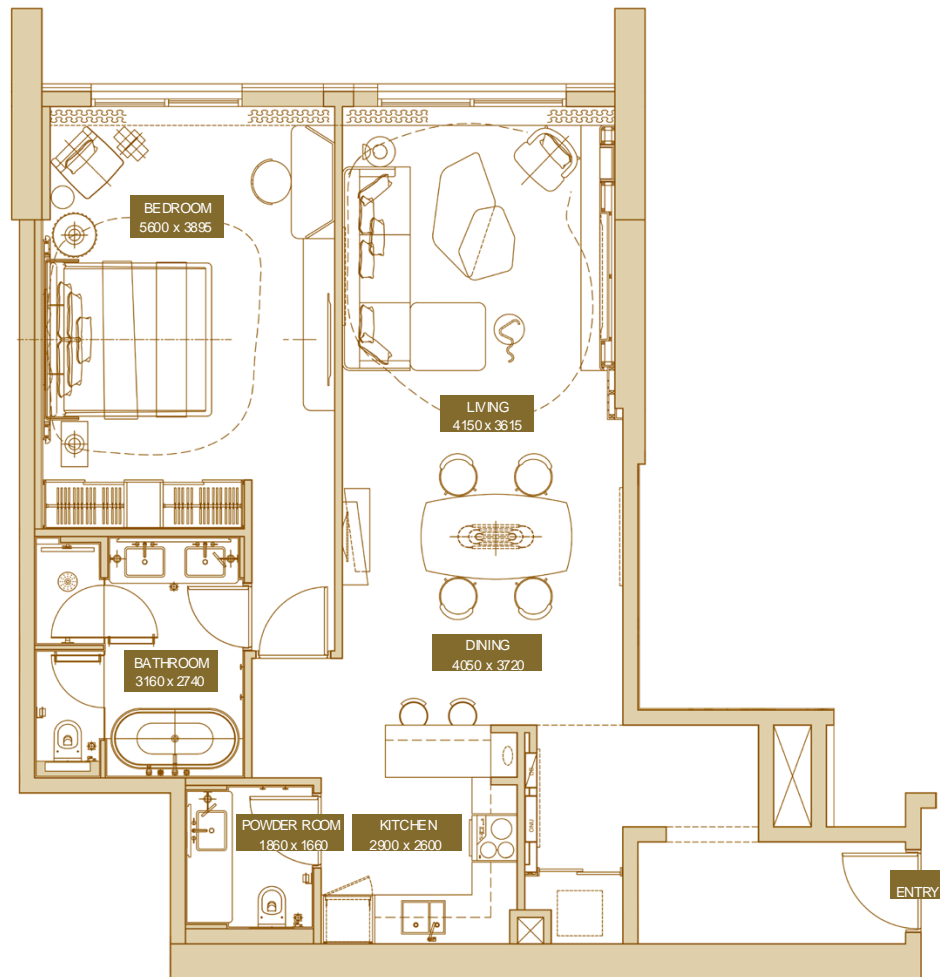
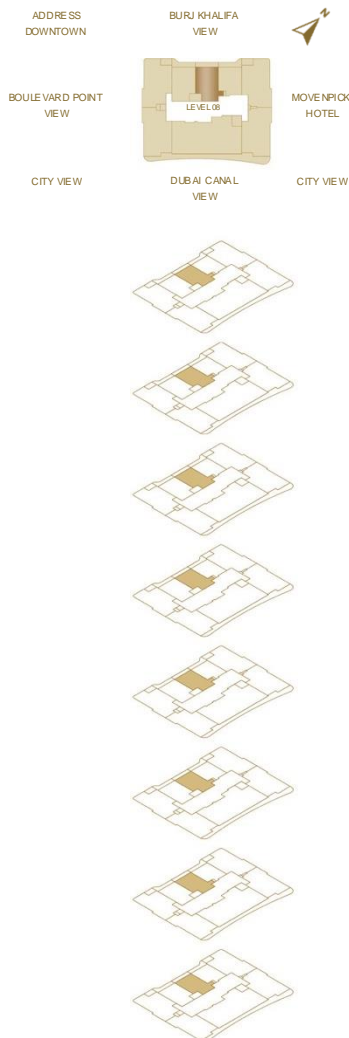


1 BR - TYPE B

1 BED APARTMENT

TOTAL AREA

89.47 SQ.M. 963.04 SQ.FT.



UNIT 803

TOTAL AREA- 89.47 SQ.M. / 963.04 SQ.FT.

Disclaimer: Please note this floor plan is for marketing purposes and is to be used as a guide only. All efforts have been made to ensure its accuracy however changes may be made during the development process and dimensions, fixtures, fittings, finishes and specifications are subject to change without notice. Dimensions may vary.

SOFITEL

RESIDENCES DOWNTOWN DUBAI

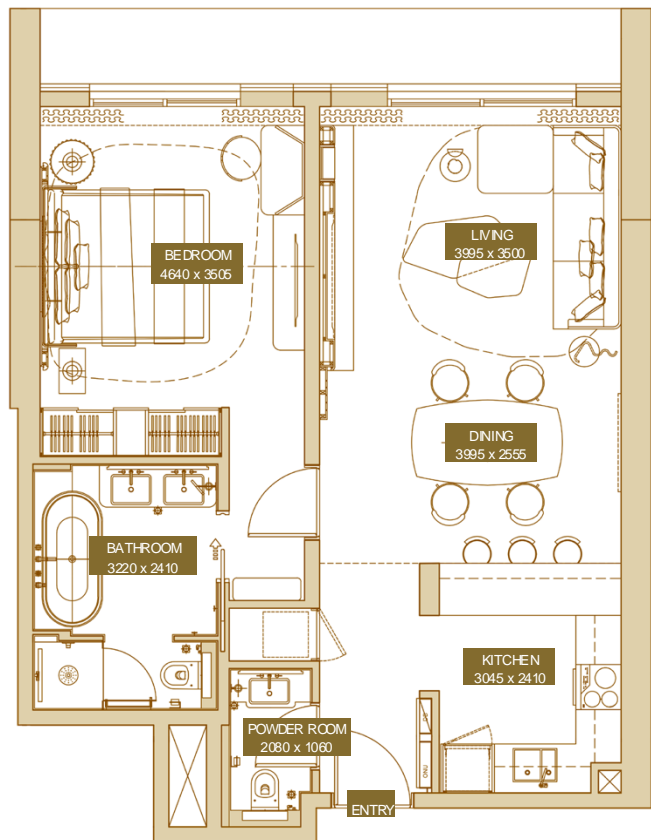
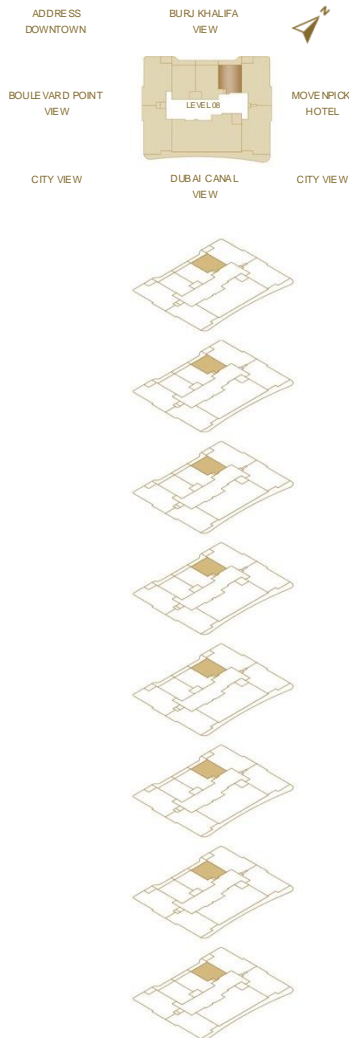


1 BR - TYPE C

1 BED APARTMENT

TOTAL AREA

68.05 SQ.M. 732.48 SQ.FT.



UNIT 804

TOTAL AREA-

68.05 SQ. M. / 732.48 SQ.FT.

Disclaimer: Please note this floor plan is for marketing purposes and is to be used as a guide only. All efforts have been made to ensure its accuracy however changes may be made during the development process and dimensions, fixtures, fittings, finishes and specifications are subject to change without notice. Dimensions may vary.

S O F I T E L

RESIDENCES DOWNTOWN DUBAI



Two Bedroom Residences

Type A, B, C L 01 - 08

SOFITEL

RESIDENCES DOWNTOWN DUBAI

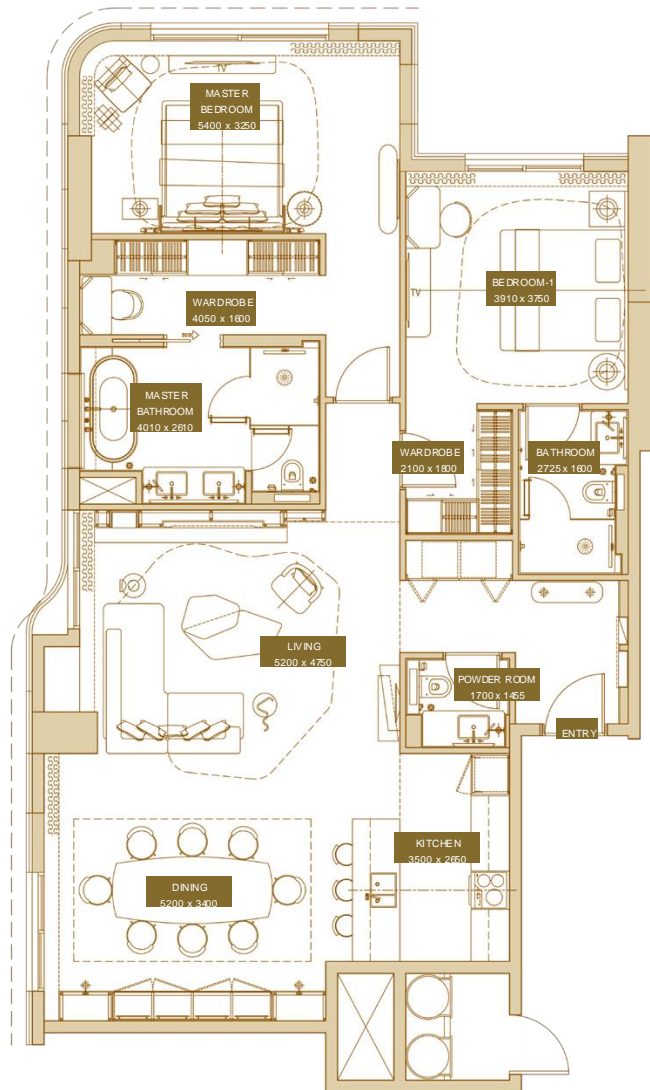
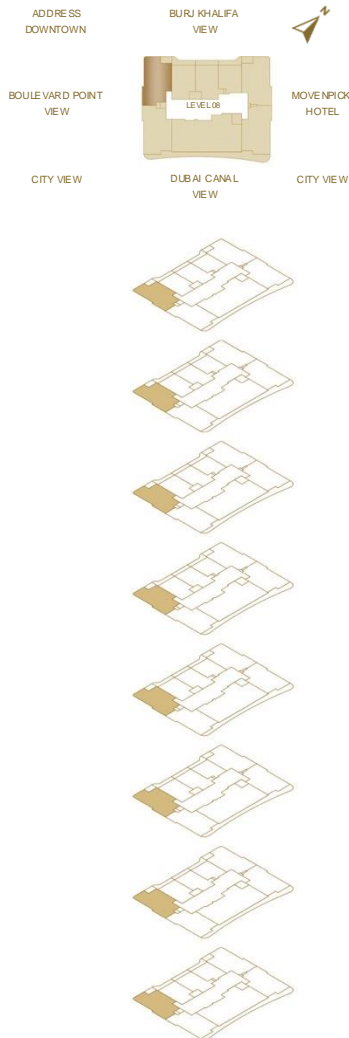


2 BR - TYPE A

2 BED APARTMENT

TOTAL AREA

133.05 SQ.M. 1,432.13 SQ.FT.



UNIT 801 TOTAL AREA- 133.05 SQ. M. / 1,432.13 SQ.FT.

Disclaimer: Please note this floor plan is for marketing purposes and is to be used as a guide only. All efforts have been made to ensure its accuracy however changes may be made during the development process and dimensions, fixtures, fittings, finishes and specifications are subject to change without notice. Dimensions may vary.

SOFITEL

RESIDENCES DOWNTOWN DUBAI

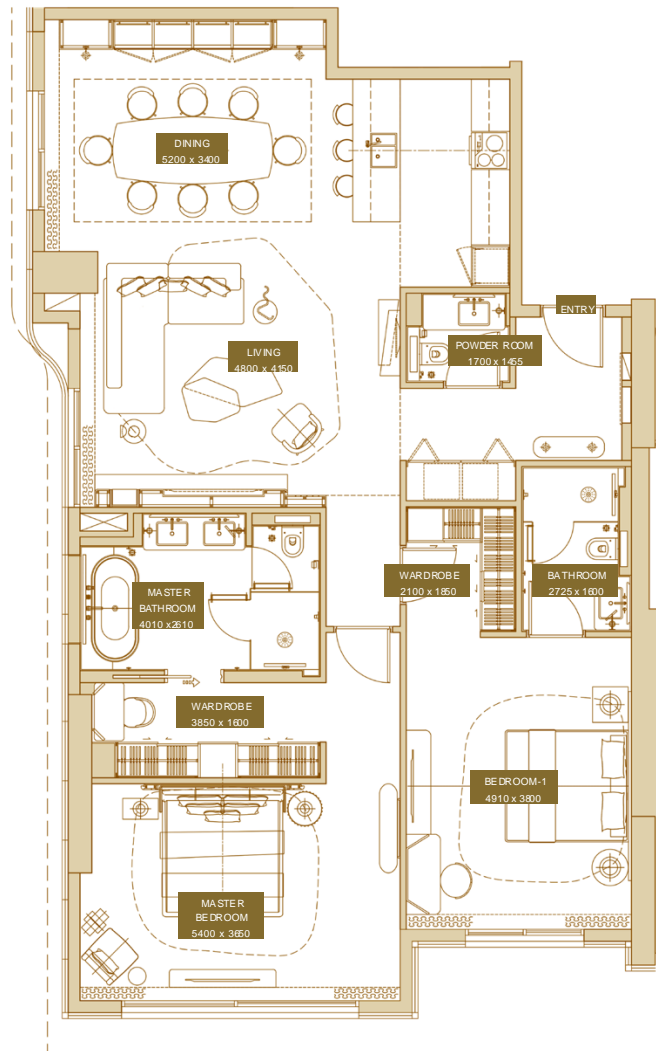
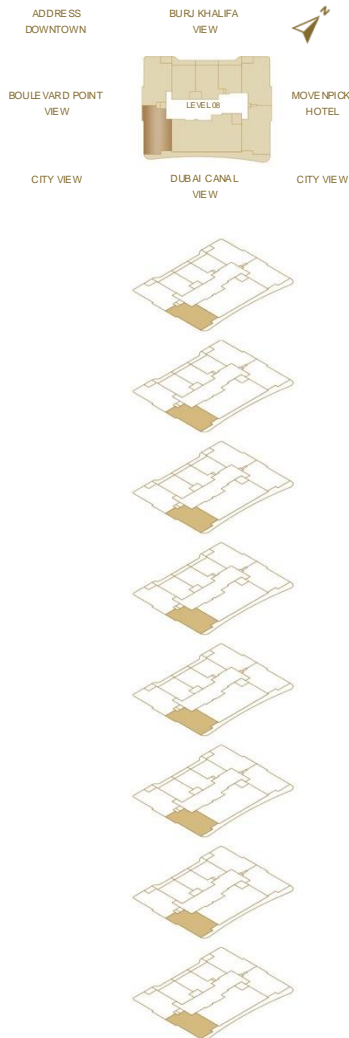


2 BR - TYPE B

2 BED APARTMENT

TOTAL AREA

136.95 SQ.M. 1,474.11 SQ.FT.



UNIT 808

TOTAL AREA-

136.95 SQ. M. / 1,474.11 SQ.FT.

Disclaimer: Please note this floor plan is for marketing purposes and is to be used as a guide only. All efforts have been made to ensure its accuracy however changes may be made during the development process and dimensions, fixtures, fittings, finishes and specifications are subject to change without notice. Dimensions may vary.

SOFITEL

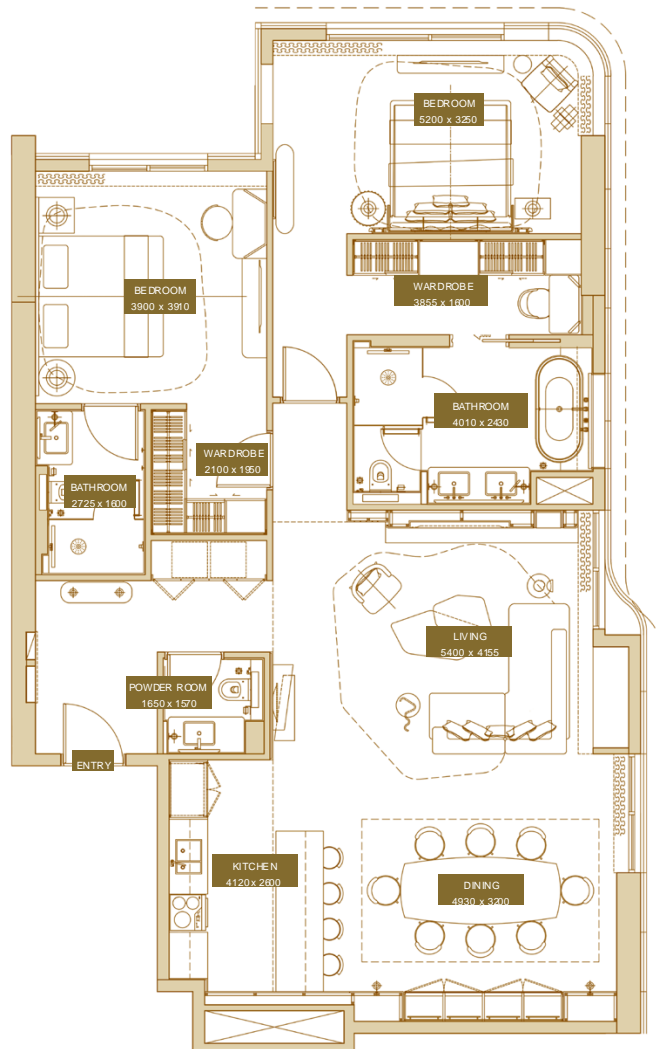
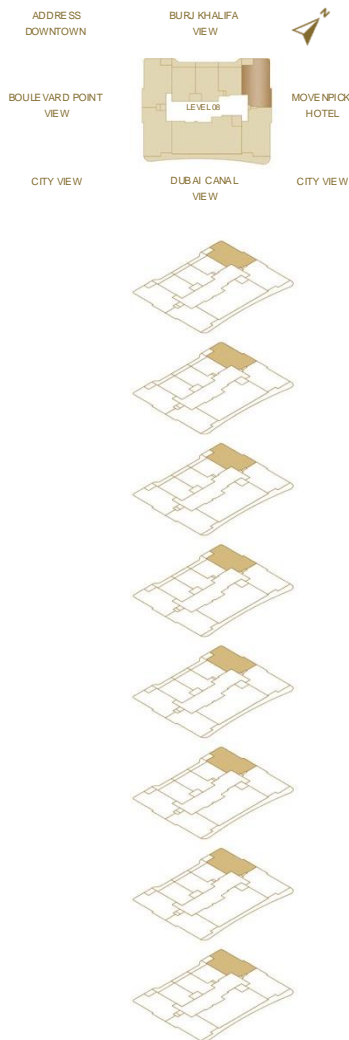
RESIDENCES DOWNTOWN DUBAI



2 BR - TYPE C 2 BED APARTMENT

TOTAL AREA

137.57 SQ.M. 1,480.78 SQ.FT.



UNIT 805

TOTAL AREA-

137.57 SQ.M. / 1,480.78 SQ.FT.

Disclaimer: Please note this floor plan is for marketing purposes and is to be used as a guide only. All efforts have been made to ensure its accuracy however changes may be made during the development process and dimensions, fixtures, fittings, finishes and specifications are subject to change without notice. Dimensions may vary.

SOFITEL

RESIDENCES DOWNTOWN DUBAI



2 BR - TYPE D

2 BED APARTMENT

TOTAL AREA

139.40 SQ.M. 1,500.48 SQ.FT.



UNIT 806

TOTAL AREA-

139.40 SQ.M. / 1,500.48 SQ.FT.

Disclaimer: Please note this floor plan is for marketing purposes and is to be used as a guide only. All efforts have been made to ensure its accuracy however changes may be made during the development process and dimensions, fixtures, fittings, finishes and specifications are subject to change without notice. Dimensions may vary.

S O F I T E L

RESIDENCES DOWNTOWN DUBAI



Three Bedroom Residences

L01 - 08

SOFITEL

RESIDENCES DOWNTOWN DUBAI

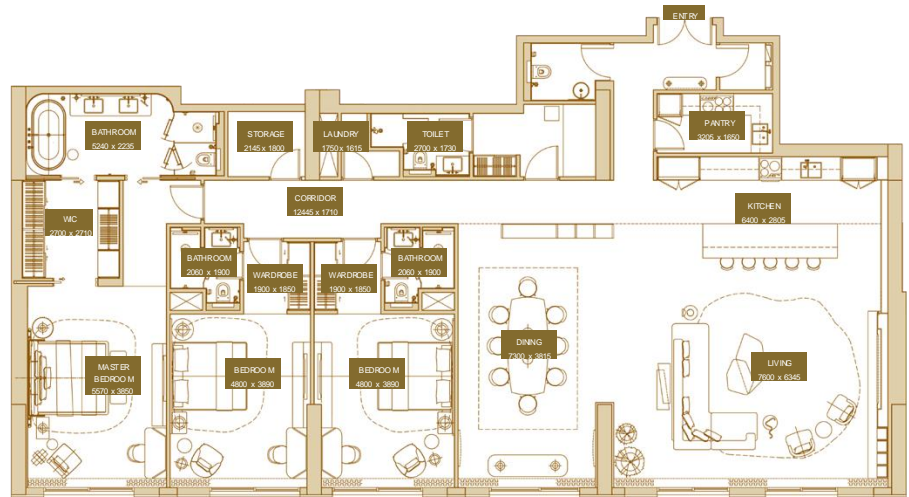
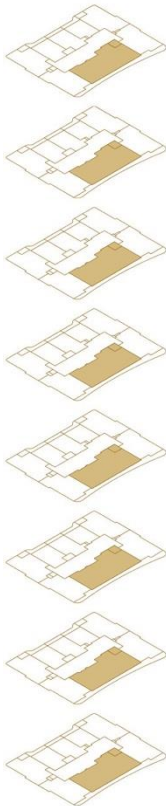


3 BR

3 BED APARTMENT

TOTAL AREA

256.54 SQ.M. 2,761.37 SQ.FT.



UNIT 807

TOTAL AREA-

256.54 SQ.M. / 2,761.37 SQ.FT.

Disclaimer: Please note this floor plan is for marketing purposes and is to be used as a guide only. All efforts have been made to ensure its accuracy however changes may be made during the development process and dimensions, fixtures, fittings, finishes and specifications are subject to change without notice. Dimensions may vary.

S O F I T E L

RESIDENCES DOWNTOWN DUBAI



PENTHOUSE

Type A & B

L09 - 11

SOFITEL

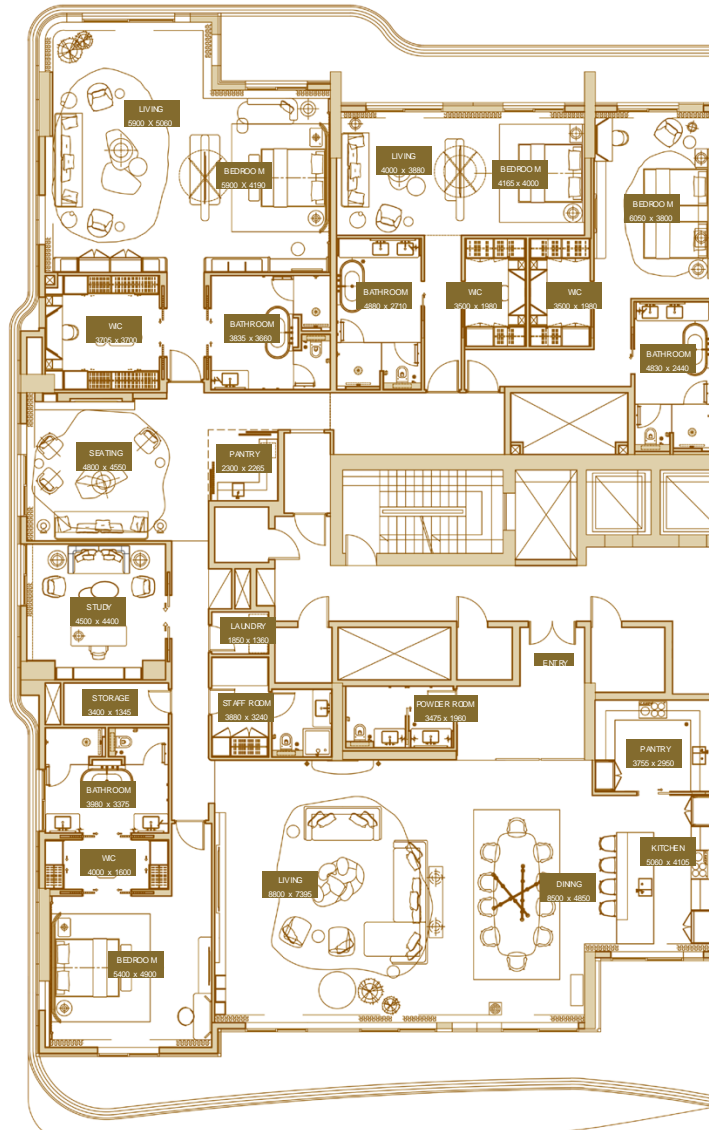
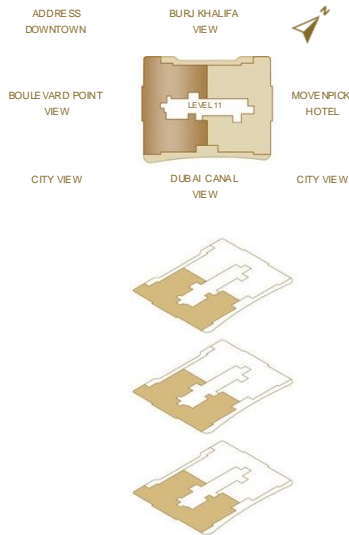
RESIDENCES DOWNTOWN DUBAI



PENTHOUSE - TYPE A 4 BED PENTHOUSE

TOTAL AREA

535.22 SQ.M. 5,761.05 SQ.FT.



UNIT 1101

TOTAL AREA-

535.22 SQ.M. / 5,761.05 SQ.FT.

Disclaimer: Please note this floor plan is for marketing purposes and is to be used as a guide only. All efforts have been made to ensure its accuracy however changes may be made during the development process and dimensions, fixtures, fittings, finishes and specifications are subject to change without notice. Dimensions may vary.

SOFITEL

RESIDENCES DOWNTOWN DUBAI

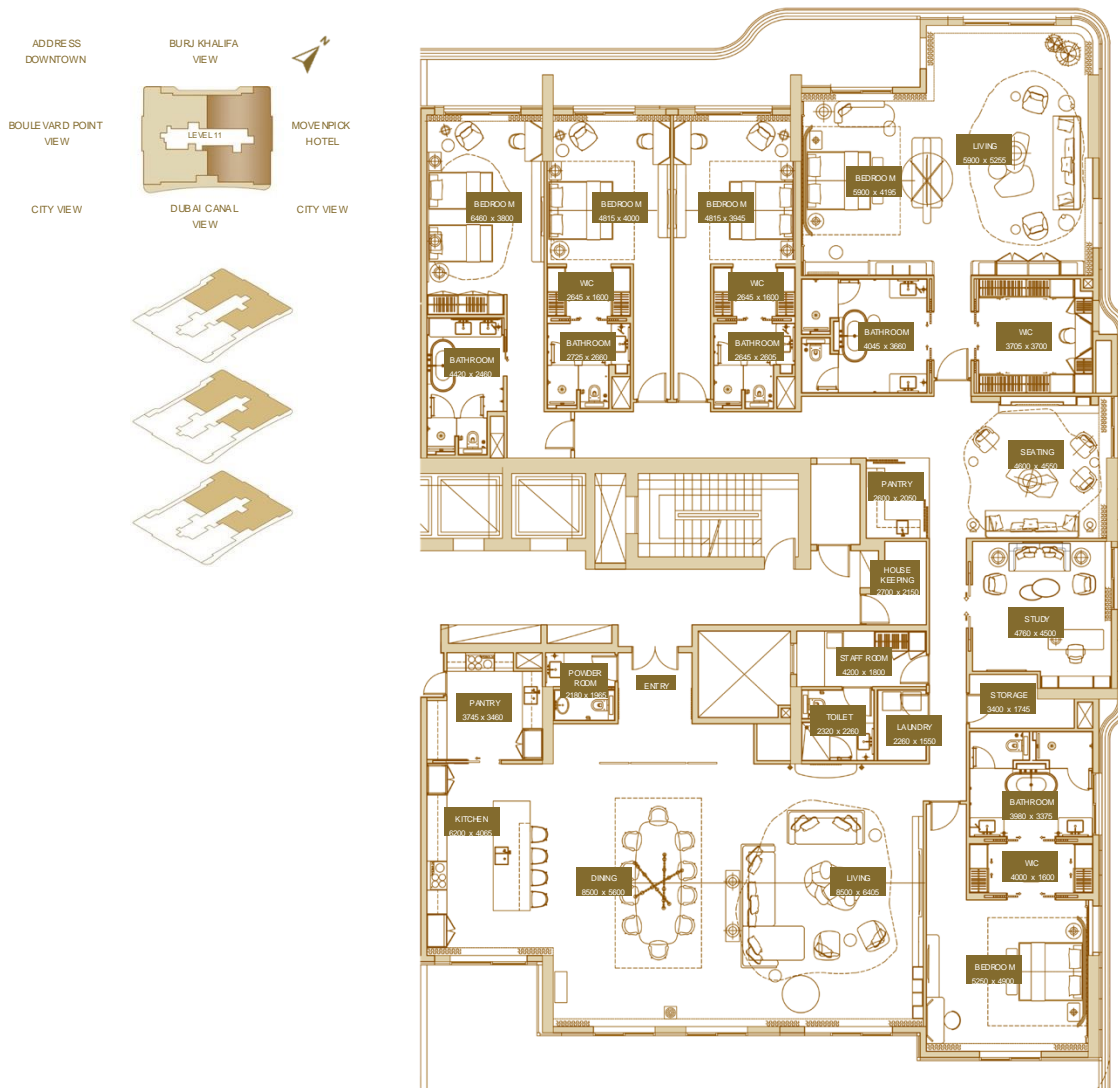


PENTHOUSE - TYPE B

5 BED PENTHOUSE

TOTAL AREA

553.74 SQ.M. 5,960.40 SQ.FT.



Disclaimer: Please note this floor plan is for marketing purposes and is to be used as a guide only. All efforts have been made to ensure its accuracy however changes may be made during the development process and dimensions, fixtures, fittings, finishes and specifications are subject to change without notice. Dimensions may vary.