


**WASL**

A low-angle photograph of a modern, multi-story residential building with balconies and glass railings. The building is set against a clear blue sky. Several white birds are flying in the sky. In the foreground, the top of a large green palm frond is visible. The overall scene conveys a sense of luxury and tranquility.

Step into a sanctuary where tranquility meets effortless connectivity. Wasl is a retreat that whispers of elegance and calm, yet stands just moments away from the pulse of Dubai.

Here, the city's vibrant energy flows within reach, while your home remains a haven of peace where luxury embraces you, and every journey begins with ease.

YOUR GATEWAY  
TO SOPHISTICATED  
URBAN LIVING.



COMFORT. CONVENIENCE . LUXURY



## PROXIMITY TO KEY LANDMARKS

**10 MIN**  
JEBEL ALI PORT  
AND BEACH

**15 MIN**  
AL MAKTOUM  
INTERNATIONAL AIRPORT

**15 MIN**  
EXPO 2020 DISTRICT

**20 MIN**  
IBN BATTUTA MALL AND  
FESTIVAL PLAZA MALL

[CLICK HERE FOR LOCATION](#)





### **AL MAKTOUM INTERNATIONAL AIRPORT**

A short drive connects you to one of the world's leading airports, making both business and leisure travel exceptionally convenient.



### **JEBEL ALI PORT AND BEACH**

Proximity to this major port facilitates international business engagements, while the nearby beach offers a serene escape for relaxation and leisure.



### **IBN BATTUTA MALL AND FESTIVAL PLAZA MALL**

These premier shopping and entertainment destinations, featuring renowned outlets like IKEA and ACE, are just moments away, catering to all your retail and dining desires.



### **EXPO 2020 DISTRICT**

Located nearby, this hub has become a focal point for innovation and enterprise, attracting businesses and offering a plethora of opportunities.

A TAPESTRY OF  
CULTURAL AND SPIRITUAL  
CONNECTIVITY





## **MOSQUES**

Al Rustmani Masjid, Omar Bin Abdul Aziz Mosque, Nakheel Mosque, and Masjid Abdullah Ali Al-Chaafar are all within a 3 to 10-minute drive, offering convenient access for daily prayers and spiritual gatherings.

## **CHURCHES**

A cluster of esteemed churches, including St. Mina Church, Dubai Mar Thoma Church, and St. Francis of Assisi Catholic Church, are located just a short drive away, serving the spiritual needs of the Christian community.

## **HINDU TEMPLE DUBAI**

A short distance away lies the newly inaugurated Hindu Temple in Jebel Ali. Opened on October 2022, this temple stands as a beacon for the Hindu community, offering a sanctuary for worship and reflection.

## **GURUDWARA**

The Guru Nanak Darbar Sikh Gurudwara, one of the largest in the region, is easily accessible, providing a spiritual haven for the Sikh community.



LUXURIOUS LIVING  
SPACES TAILORED  
TO YOUR LIFESTYLE

AREA OF PLOT	39,206 Sq.ft.
TOTAL BUILT UP AREA	399,089 Sq.ft.
Total Floors	12
No. of Lifts	4
No. of Podiums	2
No. of Basement	1
Total No. Of Parking Proposed	417

UNITS	SIZE RANGE (SQ.FT.)	NO OF UNITS
STUDIO	351.44 - 533.89	245 units
1BHK	540.67 - 1225.91	134 units
2 BHK	773.82 - 1352.28	37 units



**STUDIO** AED 624,900



**1 BHK AED 899,900**



**2 BHK AED 944,900**







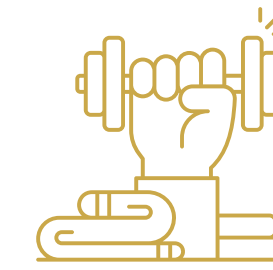


UNPARALLELED  
AMENITIES





## FITNESS AND WELLNESS



Separate gyms for men and women, a CrossFit area, dedicated yoga spaces, and swimming pools ensure a comprehensive wellness experience.

## FAMILY-FRIENDLY SPACES



Children's play areas, a splash pad, and kids' pools provide safe and engaging environments for the younger residents.

## SOCIAL AND RECREATIONAL FACILITIES

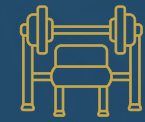


A cinema, barbecue area, outdoor seating, and a basketball court foster community interaction and leisure.

## PREMIUM AMENITIES FOR A LUXURIOUS LIFESTYLE

The development is designed with a comprehensive array of luxury amenities spread across different levels to ensure a vibrant and active community.

These include:



Gymnasium



Cinema



Fire Place



Outdoor Seating



Swimming Pool



Dedicated Yoga Area



BBQ Area



Jacuzzi

+more...







STRONG  
IS THE NEW















## EMBRACE THE FUTURE TODAY

Wasl is more than just a residence; it's a lifestyle choice that encapsulates comfort, convenience, and luxury. By addressing the common pain points of urban living, it offers a harmonious environment where residents can thrive personally and professionally.

