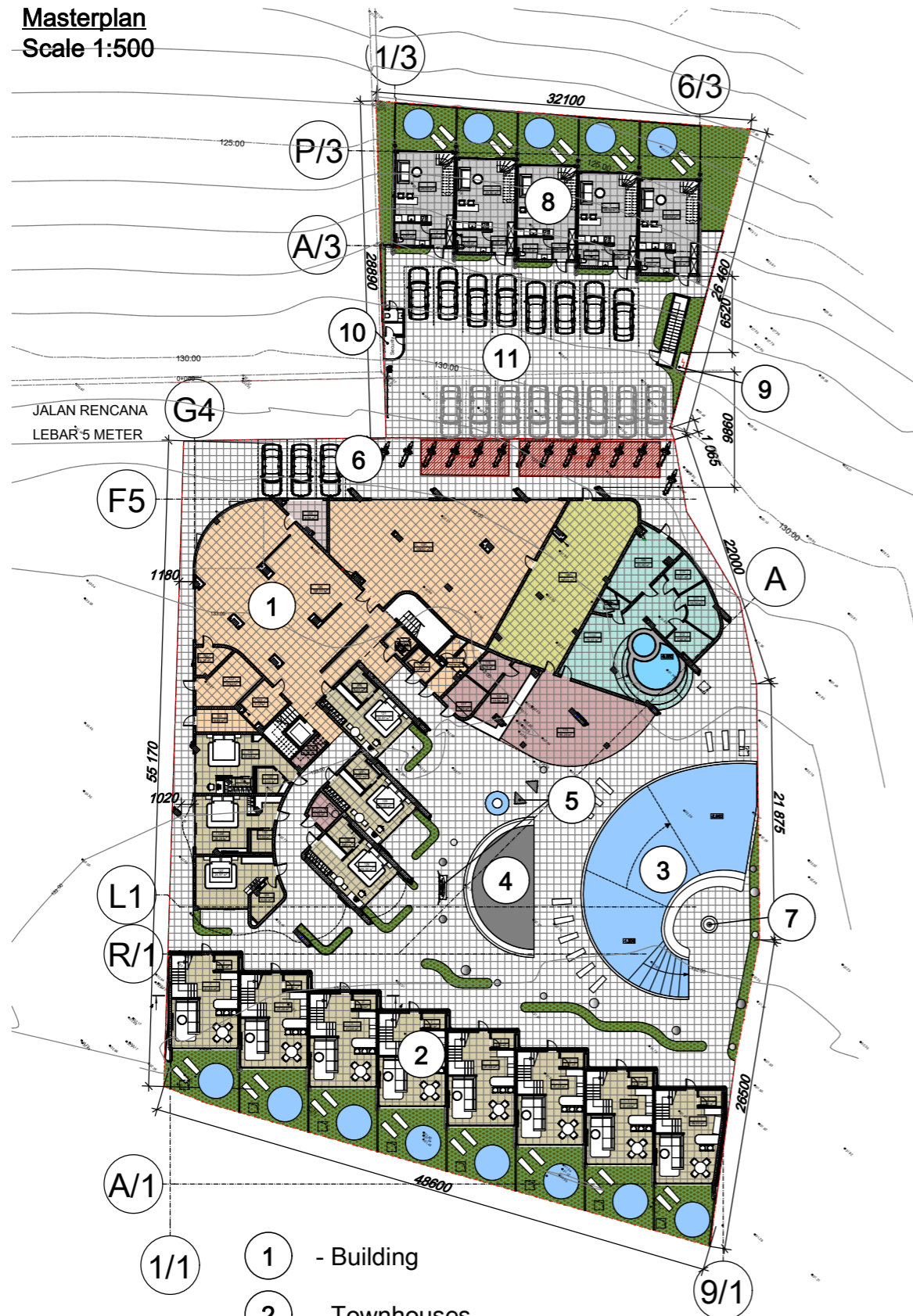


Masterplan  
Scale 1:500



- ① - Building
- ② - Townhouses
- ③ - Public swimming pool
- ④ - Fitness area
- ⑤ - Art
- ⑥ - Parking 1
- ⑦ - Fireplace
- ⑧ - Mezzanines
- ⑨ - Transformer substation
- ⑩ - Security
- ⑪ - Parking 2

Technical and economic parameters

Total land plot area - 3649m<sup>2</sup> (3000 m<sup>2</sup> + 649 m<sup>2</sup>)  
 Building area  
 (building, townhouses, mezzanines and security ) - 1687,89 m<sup>2</sup>  
Area of landscaping of the territory :  
 Greenery outside - 366.77 m<sup>2</sup>  
 Public swimming pool - 173,98 m<sup>2</sup>  
 Pools at townhouses (7,07 m<sup>2</sup> x8) - 56,56 m<sup>2</sup>  
 Pools at mezzanines (5,31 m<sup>2</sup> x5) - 26,55 m<sup>2</sup>  
 Paving area (including parking) - 1337,25m<sup>2</sup>  
 Parking 1 area - 180,00 m<sup>2</sup>  
 Parking 2 area - 229,73 m<sup>2</sup>

Technical and economic parameters of the building

Number of apartments - 60 pcs.  
 Total area of the building (with balconies and terraces included) - 4106,9 m<sup>2</sup>  
 Building area - 1056,43 m<sup>2</sup>

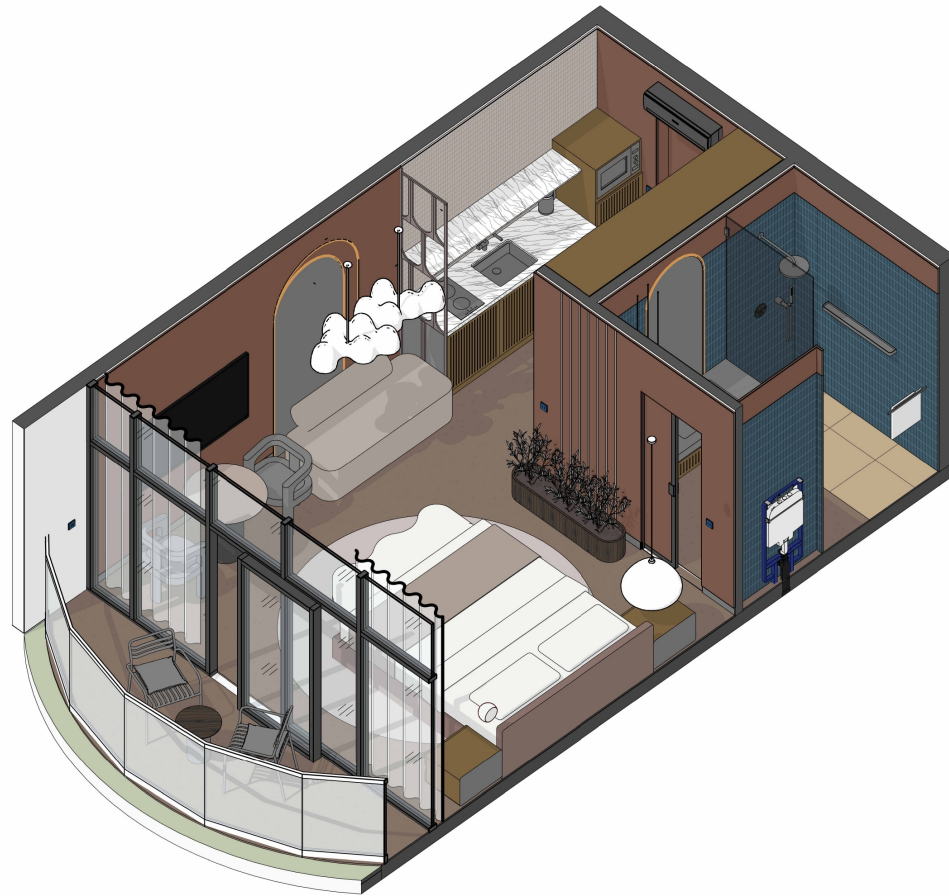
Technical and economic parameters of the townhouses

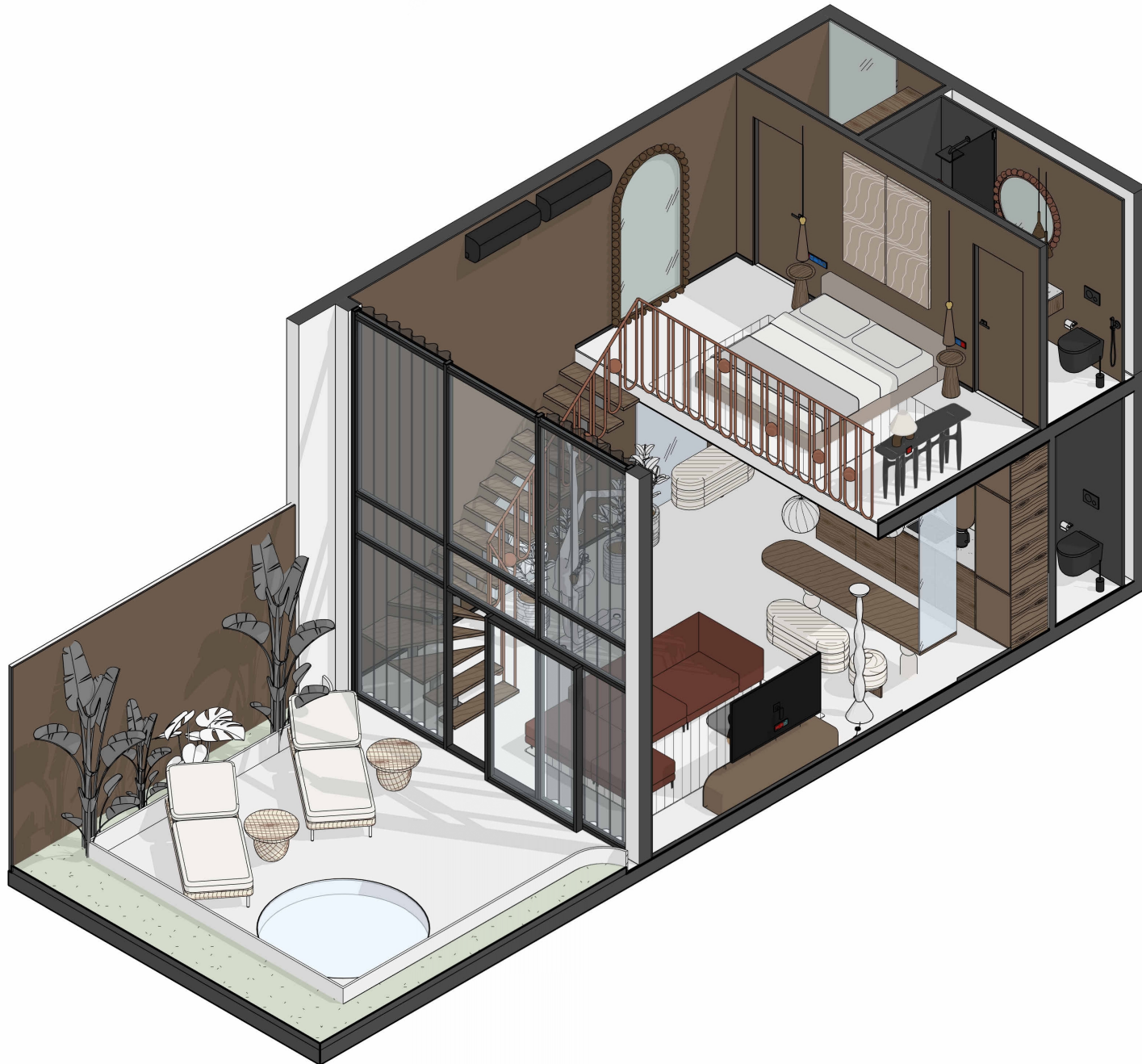
Number of townhouses - 8 pcs.  
 Total area of townhouses (with balconies and terraces included) - 1035,93 m<sup>2</sup>  
 Total area of balconies and terraces of townhouses - 371,24 m<sup>2</sup>  
 Total area of courtyards at townhouses - 210,05 m<sup>2</sup>  
 Townhouse development area - 405,3 m<sup>2</sup>

Technical and economic parameters of the mezzanines

Number of mezzanines - 5 pcs.  
 Total area of mezzanines - 298,15 m<sup>2</sup>  
 Total area of courtyards at mezzanines - 113,42 m<sup>2</sup>  
 Mezzanines development area - 220,44 m<sup>2</sup>  
 Total area of basement - 488,4 m<sup>2</sup>

- - - Site border
- ▤ -Paving
- ▨ -Lawn
- ▩ -Pool
- ▧ -Rubberized flooring for fitness area









Second floor



First floor