

TheWeave

The tapestry of home


JOE ADSETT
ARCHITECTS

Al Ghurair





Al Ghurair has played a pivotal role in shaping Dubai's skyline through complex infrastructure and construction projects, contributing to some of the city's most iconic landmarks, as well as large scale developments across the Middle East, Africa and India.

Headquartered in Dubai, Al Ghurair's diversified operations span 8 countries across the globe, employing approximately 28,000 people. From creating the region's first shopping mall and mixed-use concept, establishing its first private bank and private insurance company, to building the facade glazing of Burj Khalifa, Al Ghurair has long been at the heart of the nation's growth.

Today, Al Ghurair continues to build on its enduring 60+ year legacy, guided by its purpose: 'In pursuit of better', as it strives to facilitate meaningful change across the communities within which it operates.



60+ years in business

28,000+
people employed

8
countries in operation

1st private bank

Mashreq, established by the family in the region

5

strategic sectors: Foods, Development, Mobility, Infrastructure and Property management

9 million

metric tonnes of grain and oilseed annually

1st cooling plant

company in the UAE to construct district cooling plants

50+

years of specialised engineering and construction expertise

20,000+

Residential and commercial units built and managed

30%

of the UAE's total chilled water quota delivered to date

100+

major construction projects successfully completed



Al Ghurair Development

From visionary design to lasting quality, Al Ghurair Development is creating a portfolio of extraordinary properties, built on a strong foundation of more than six decades of experience.

With over 20,000 residential and commercial units built and managed alongside nearly 1,000 hotel rooms and serviced units, Al Ghurair Development continues this journey, bringing a fresh design perspective in architecture and living.

In pursuit
of better

Guided by our purpose, Al Ghurair Development is committed to delivering exceptional living experiences that resonate with the city's transformative ambitions.

TheWeave

What makes a story is how it's woven.
What creates a classic is how it endures.



Façade as a fabric

The Weave is where history's patterns meet modern aspirations. The captivating use of angles and intertwining balconies across the façade is inspired by 'safafa', the intricate weaving of palm fronds, highlighting the versatility and beauty of natural materials found in the Middle Eastern landscape. Every curve of the building has been meticulously crafted to create elegant and calming homes that reflect warmth and beauty.





Designed by Joe Adsett

Award winning Australian architect

“The Weave was inspired by the ancient artistry of Middle Eastern weaving, a craft that speaks of connection, continuity, and culture. Our vision was to translate that tradition into architecture, creating a dialogue between heritage and modernity. Every curve and pattern in the building reflects the movement and rhythm of woven fabric, while the spaces within are shaped by light, texture, and balance. We believe that residents will feel the strongest connection to this interplay of light and form as well as the rooftop club that is another emotional anchor within The Weave.”

TheWeave

Al Ghurair 



Woven into the heart of Dubai

Jumeirah Village Circle

Developed by Al Ghurair, The Weave is a charming address in Jumeirah Village Circle, connecting you to the heart of a bustling community with easy access to beachfront destinations, entertainment hubs and business districts.

13 mins

Dubai Hills Mall

23 mins

Burj Khalifa

20 mins

Palm Jumeirah

25 mins

DXB and DWC Airports

Dubai International
Cricket Stadium

Sheikh Mohd. Bin
Zayed Road (E311)

Circle Mall, JVC

Hessa Street (D61)

TheWeave

Al Khail Road (E44)



A serene urban location

Jumeirah Village Circle

Community amenities

- Circle mall
- 15-18 supermarkets
- 10-13 schools, nurseries and early learning centers
- 10-12 healthcare facilities

Key attractions nearby

- Dubai Miracle Garden
- Dubai International Cricket Stadium
- Dubai Autodrome
- Dubai Polo & Equestrian Club
- Jebel Ali Racecourse

Location and access

- Al Khail road (E44)
- Sheikh Mohd. Bin Zayed Road (E311)
- Hessa Street (D61)
- Dual airport access Dubai international (DXB) and Al Maktoum international (DWC).

TheWeave

Al Ghurair 

The rooftop residents club



TheWeave

Al Ghurair



Unwind beneath the evening sky at the infinity pool, or simply soak in the calm of the softly-lit pool deck.

TheWeave

Al Ghurair



Welcome the evening at the outdoor barbecue and dining area, where the start of every memorable gathering begins.

TheWeave

Al Ghurair 



Share moments and make
memories at the private cinema.

TheWeave

Al Ghurair



Plunge into an invigorating ice bath, immerse into bubbling jacuzzis, rejuvenate in the steam room or restore yourself in the sauna.



Stay active at the rooftop fitness and yoga studio, filled with natural light.

TheWeave

Al Ghurair



The residences

At The Weave, residences are shaped around modern living where spaces transcend from quiet mornings to intimate evenings. Light-filled interiors, flowing layouts and warm finishes create an atmosphere that feels natural. Here, everyday rituals are framed by considered design, where comfort, privacy and connection coexist in perfect balance, creating homes tailored to the way life is truly lived.

TheWeave

Al Ghurair



A life wrapped
in tranquility





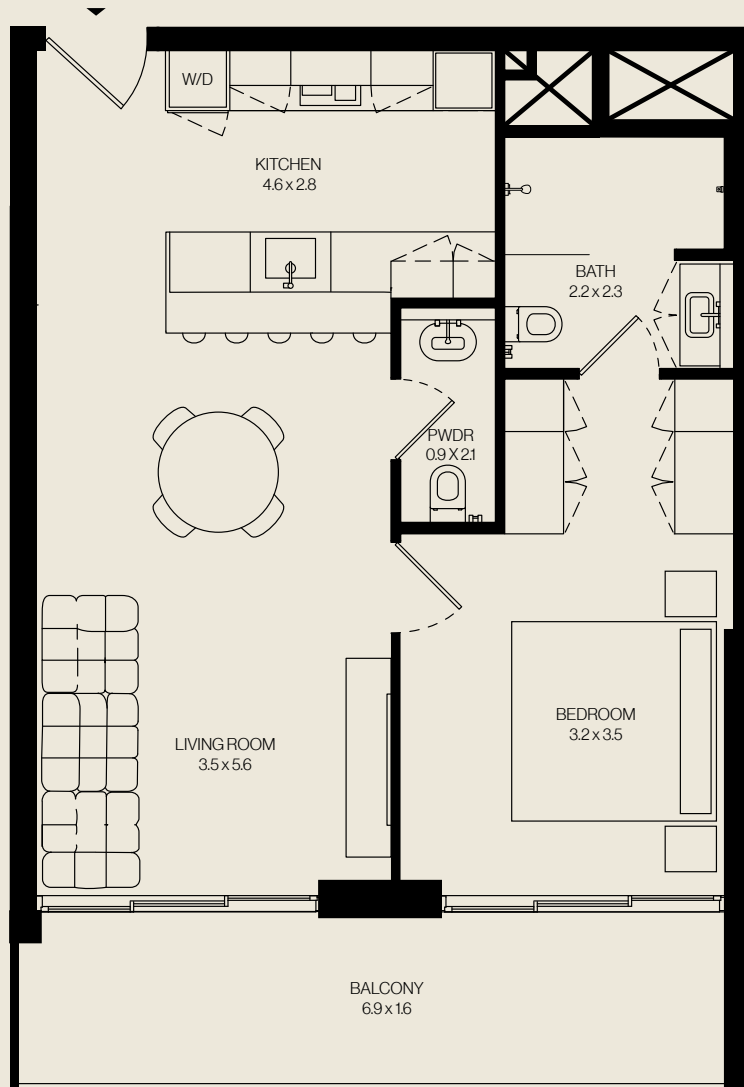
Warm and inviting living spaces where refined materials and natural light come together in harmony, bringing a sense of calm.



Spa-inspired bathrooms combining elegant stone finishes with neutral accents to create a restorative atmosphere.



Contemporary kitchen island with natural tones,
state-of-the-art appliances and a seamless spatial flow.

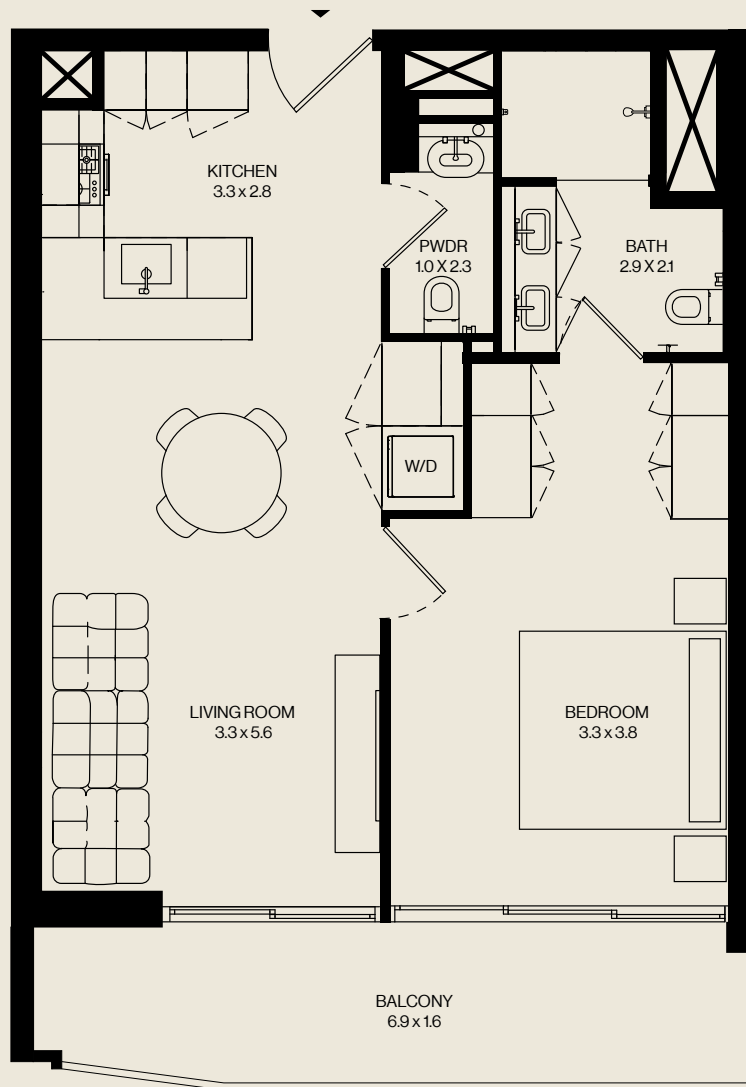


One-bedroom residences - Type A

Thoughtfully crafted one-bedroom homes offering a balanced living experience.



Sizes from **745** to **932** sqft



One-bedroom residences - Type B

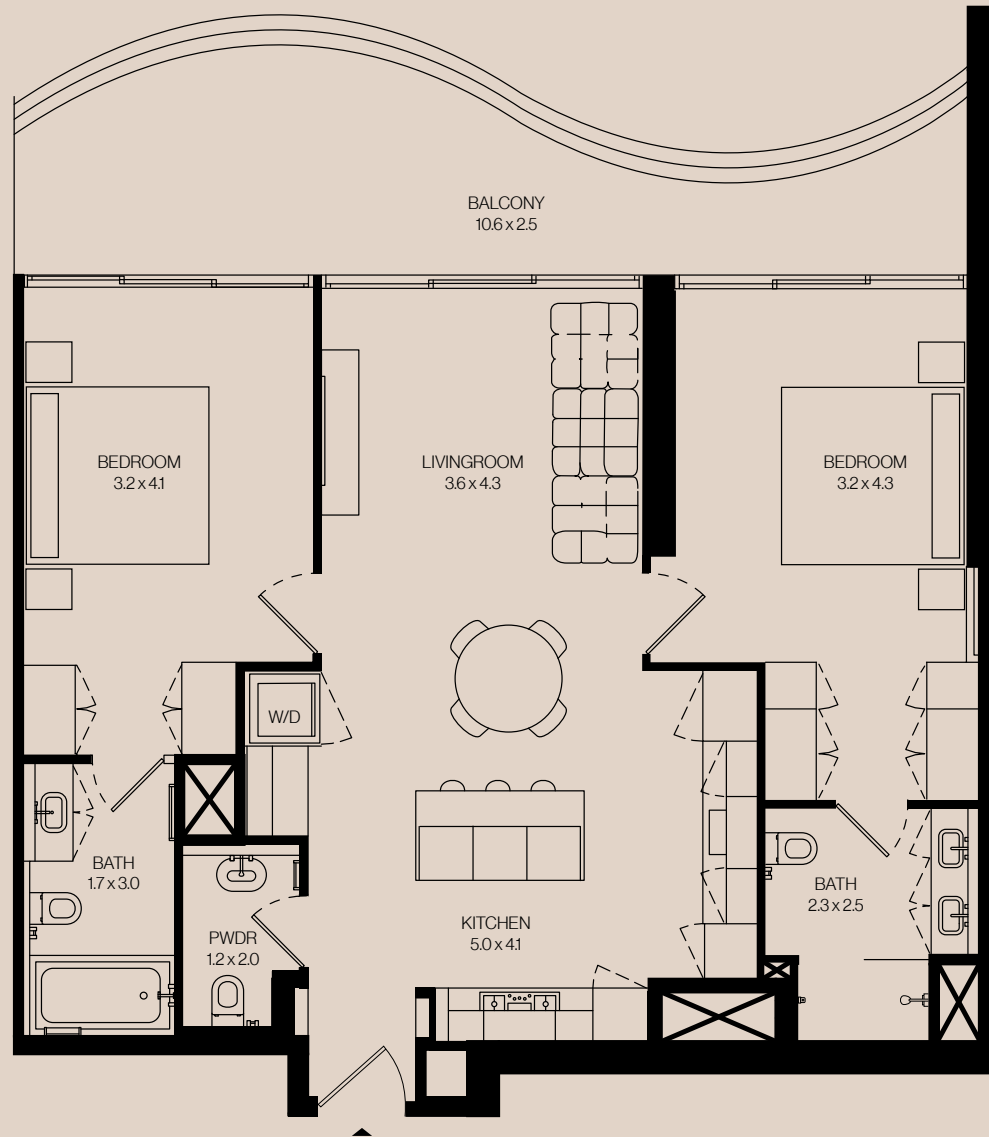
Intuitively designed one-bedroom homes featuring an additional powder room.



Sizes from **745** to **932** sqft



Light-filled, open plan residences blending natural warmth with modern finishes to create a modern and welcoming setting.



Two-bedroom residences

Two-bedroom homes designed with private master suites and a study corner.



Sizes from **1,217** to **1,519** sqft



Serene bedrooms composed with soft colour palettes and spacious built-in wardrobes, creating a restful and tranquil space to relax.



Three-bedroom residences

A limited selection of three-bedroom homes with an additional study or maid's room.



Sizes from **1,820** to **2,221** sqft

Timelessness comes from restraint and authenticity. In a place where architecture often seeks to stand out, The Weave stands apart, through elegance rather than excess. Every aesthetic gesture has been designed to intuitively flow with the way our residents live their daily lives. Beauty and function are inseparable.

TheWeave

—
The tapestry of home