

An aerial, top-down view of a large, multi-decked luxury yacht sailing on a dark blue ocean. The yacht has a white hull and tan-colored upper decks. It is moving from left to right, leaving a white wake behind it. The water is dark blue with some white foam from the wake.

  
**PALLADIUM**  
PRIME REAL ESTATE DEVELOPMENT L.L.C.

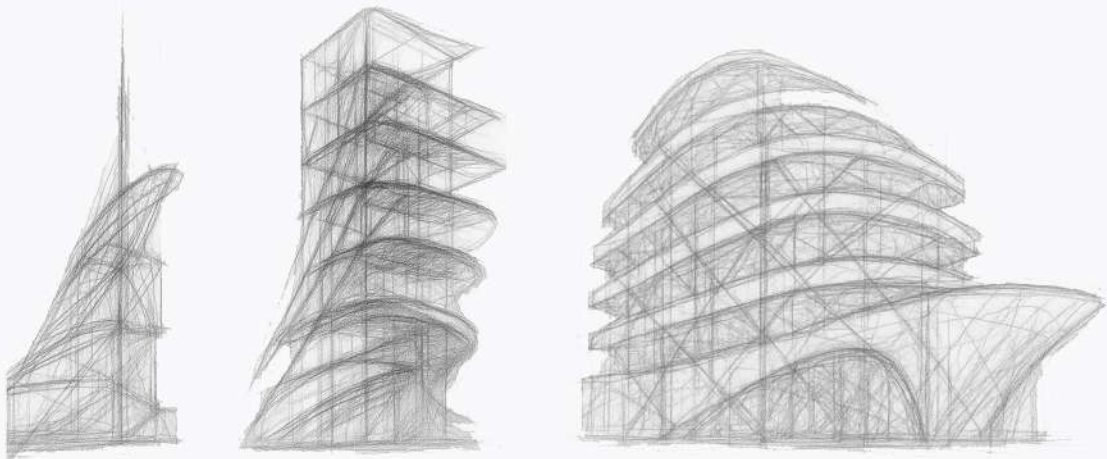
**THE ROYAL YACHT**

**BY PALLADIUM**



Palladium introduces a new hospitality experience shaped by the language of the sea — where space opens, light moves, and clarity becomes tangible. The architecture expresses gentle horizons and fluid forms, creating an environment that supports thinking, presence, and meaningful connection.

This is a place designed for people to feel clear, composed, and aware — even within the momentum of the city.



Architecture, for us, is sculpted.  
From a single gesture to a fully realized form —  
refined, balanced, and intuitively composed.

Where architecture sails beyond convention





## OVERVIEW

A 4-Star Plus Luxury Hotel crafted to surpass traditional 5-star expectations, positioned adjacent to Dubai Innovation Hub and surrounded by Fortune 500 headquarters and leading global tech giants in Dubai Internet City.

Where urban refinement meets the calm ease of a private yacht retreat — featuring approximately 200 elegantly appointed rooms, soft textures, clean lines, and a quiet sense of exclusivity.

This is the natural destination for executives, innovators, and international travelers seeking effortless luxury in the center of the region's most influential business ecosystem.

Effortless. Modern. Beautifully precise.





## DISTRICT

### Dubai Internet City

## SPORT

Proximity to the Emirates Golf Club and modern fitness centers

## BUSINESS HUBS

Direct access is ensured to the key free zones of Dubai Internet City, Media City, and Knowledge Park.

## HEALTH

Modern specialized clinics, pharmacies, and wellness centers are located in the immediate vicinity.

## RESTAURANTS

A variety of dining options, from international fine dining restaurants to cozy cafes, is within walking.

## TRANSPORT

Dubai Internet City Metro Station within walking distance.

## MALLS

Mall of the Emirates and Dubai Marina Mall within a 5-10 minute drive.

## LEISURE/BEACH

Proximity to Jumeirah Beach and the Dubai Marina area.

## EDUCATION

American University and Knowledge Park.

# The Location



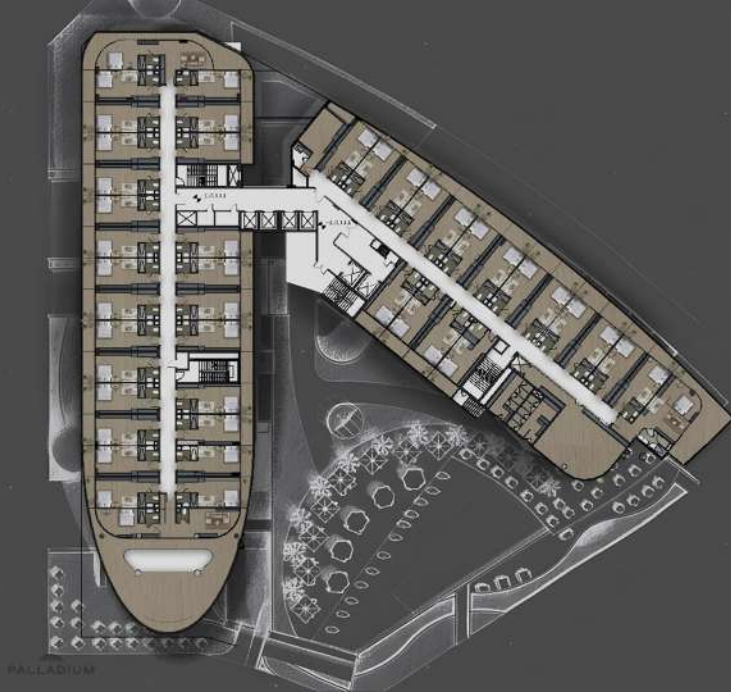
Anchored in the heart of Dubai Internet City, the hotel enjoys a prime position surrounded by innovation, world-class business hubs, and vibrant coastal living. Moments from Palm Jumeirah, Dubai Marina, and the city's key arterial roads, it offers effortless connectivity while maintaining a calm, exclusive atmosphere. From this strategic location, guests can glide between work, leisure, and the city's landmark destinations with the ease and elegance of a yacht in open waters.

Crafted for those who live life at full sail





# Floor Plans and Moods



## Every floor, a new deck of refined luxury

Crafted with the sleek elegance of a modern yacht, the hotel's architecture flows with smooth curves and refined symmetry. Inside, every floor reveals lavishly designed spaces—marble finishes, warm woods, sculpted lighting, and expansive glazing that frames Dubai In-

layout is engineered for effortless movement and privacy, offering guests a seamless blend of luxury, comfort, and contemporary sophistication befitting a true five-star destination











Inside, the hotel unfolds like the interior of a modern superyacht—sleek lines, polished finishes, and a sense of fluid motion in every space. Lavish materials, sculpted lighting, and panoramic glazing create an atmosphere of effortless luxury, while curated furnishings echo the elegance of life at sea. Each level is designed as its own ‘deck,’ offering guests a seamless blend of comfort, sophistication, and the maritime-inspired serenity that defines this retreat.

A landmark shaped to cruise through the heart of Dubai Internet City

