

# Masterplan

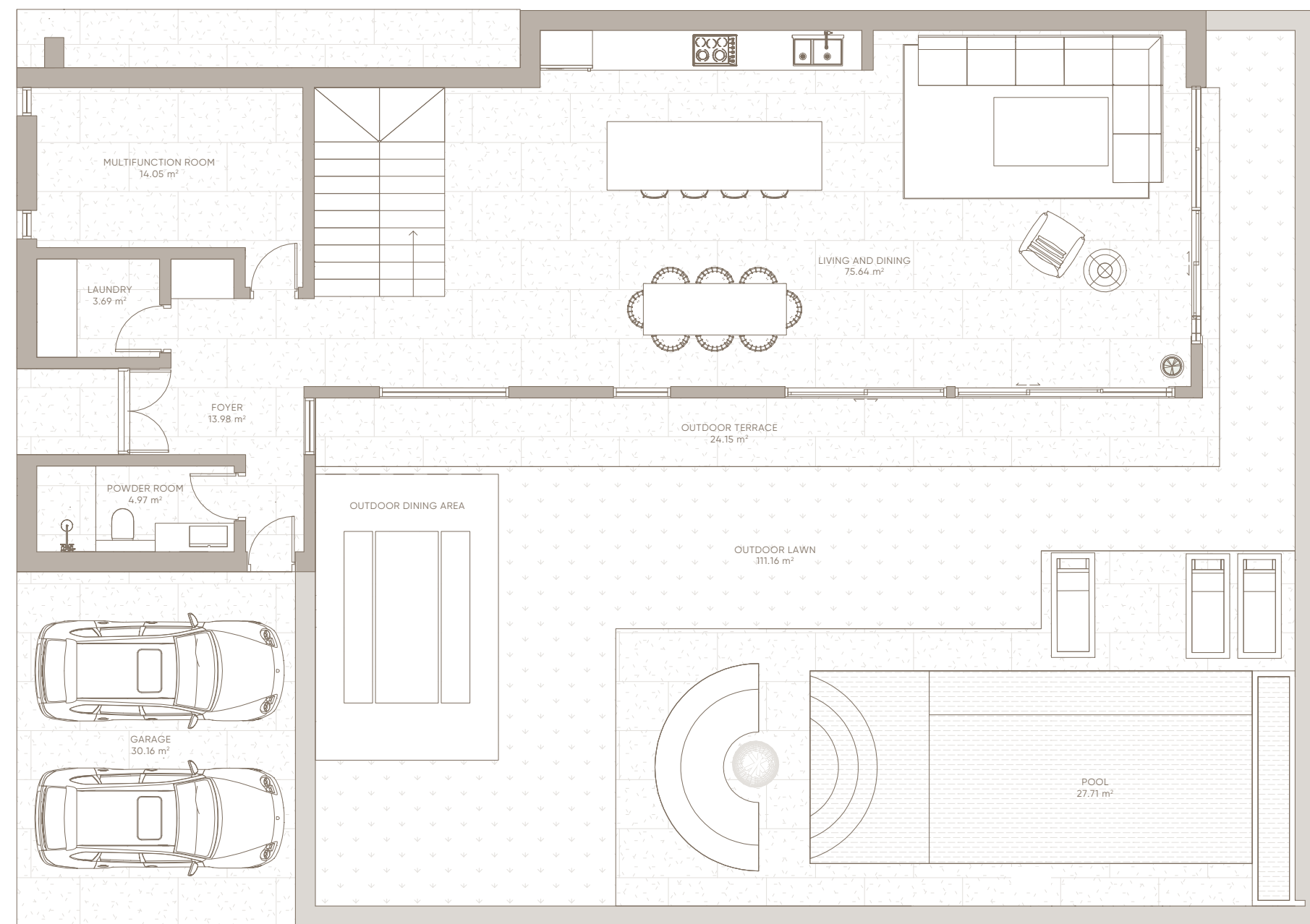


- 5 Bedroom Villa
- 4 Bedroom Villa
- 3 Bedroom Villa

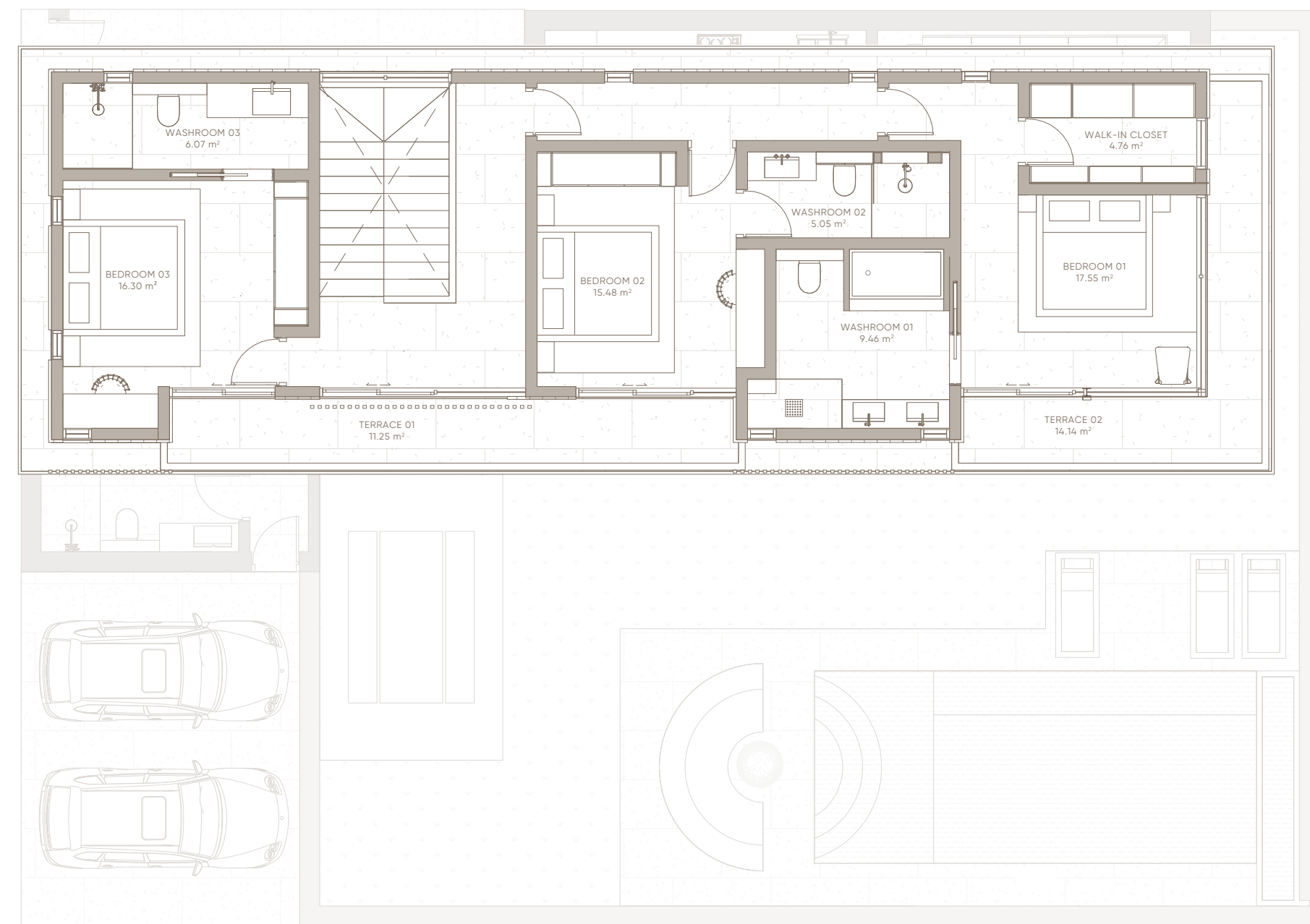
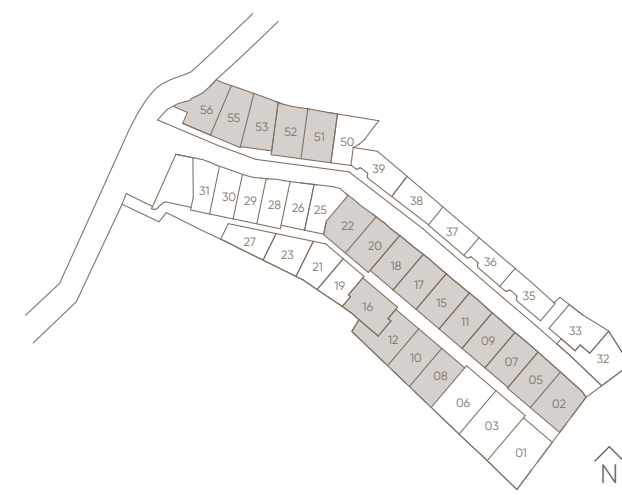
- FACILITIES**
- The Clubhouse
  - Themed Garden
  - Children Playground
  - Outdoor BBQ Area
  - Outdoor Fitness Area
  - EV Charging Station



**4 BEDROOM**  
TYPICAL



Ground Floor



Second Floor

## 4 BEDROOM

09

### Building Area

309 m<sup>2</sup>

### Net Land Area

395 m<sup>2</sup>

### Semi-Gross Land Area

471 m<sup>2</sup>

### Swimming Pool Area

29 m<sup>2</sup>

### Parking Area

41 m<sup>2</sup>

### Bedroom

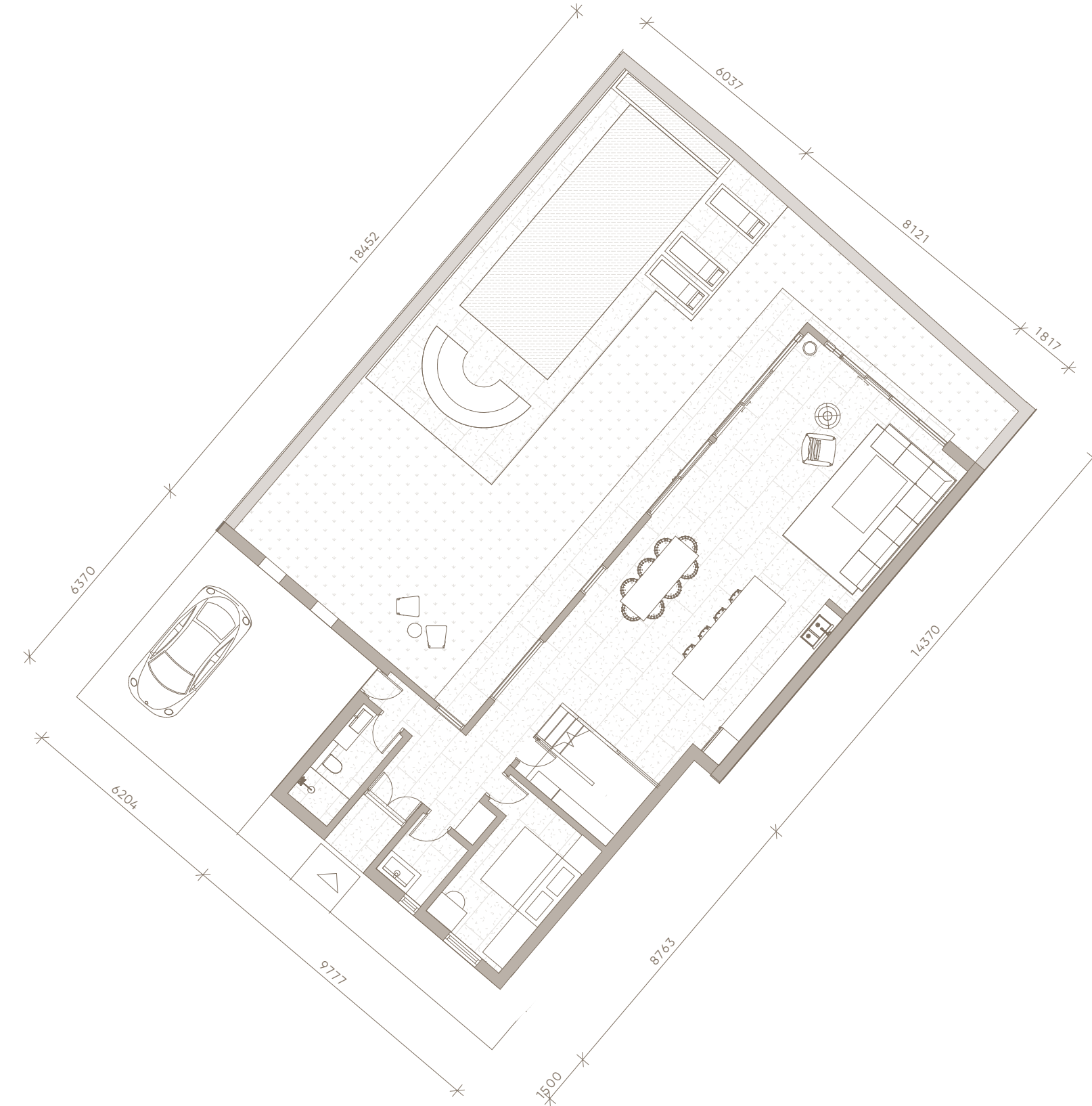
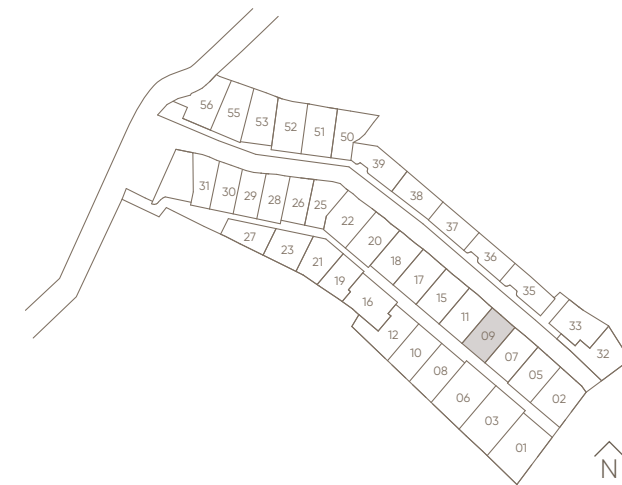
4

### Bathroom

4

### View

Garden



## 4 BEDROOM

55

### Building Area

309 m<sup>2</sup>

### Net Land Area

433 m<sup>2</sup>

### Semi-Gross Land Area

508 m<sup>2</sup>

### Swimming Pool Area

29 m<sup>2</sup>

### Parking Area

50 m<sup>2</sup>

### Bedroom

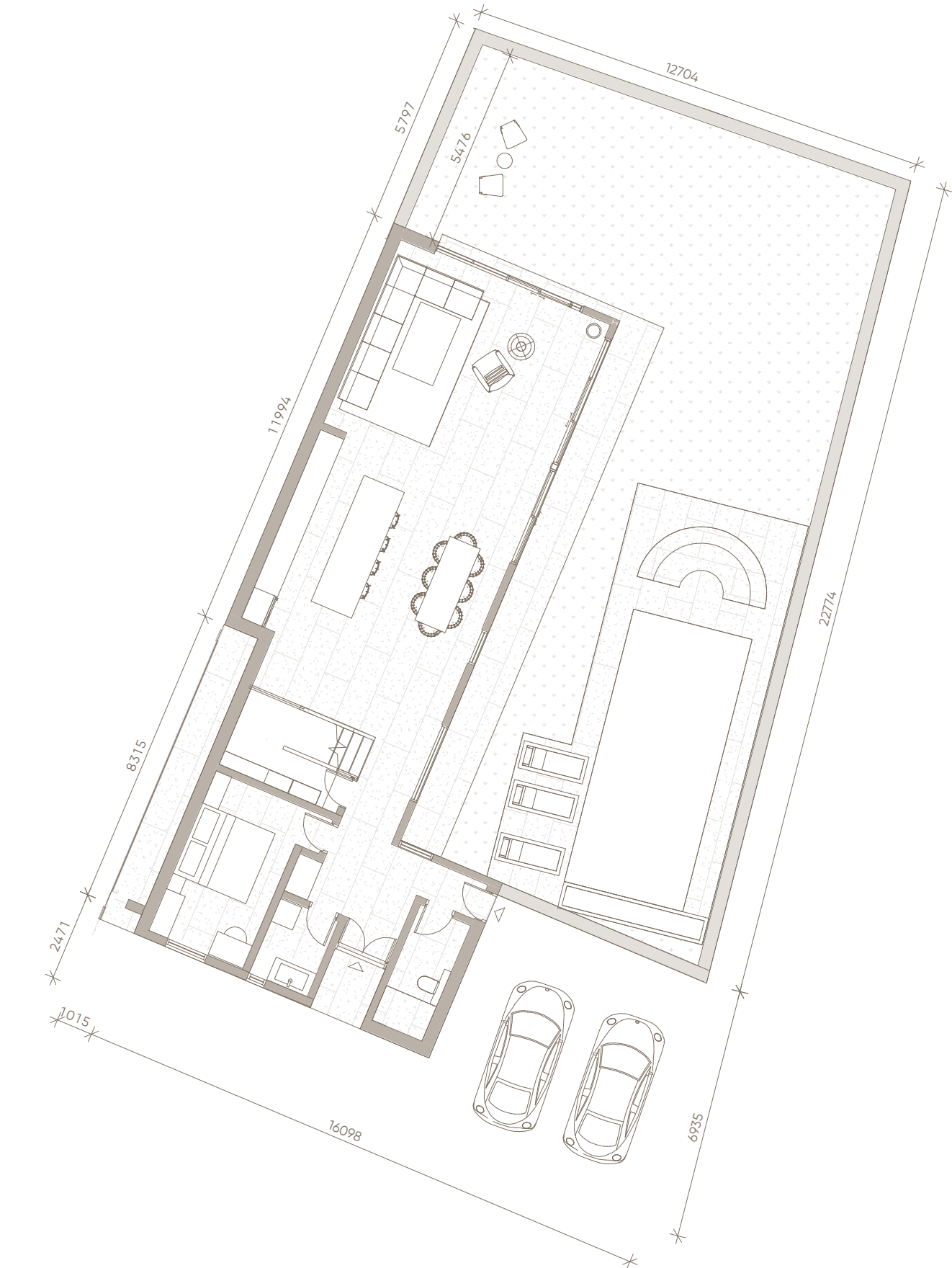
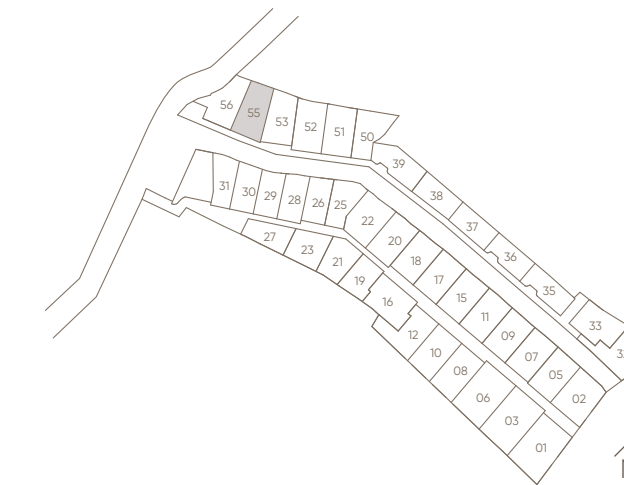
4

### Bathroom

4

### View

Garden



## 4 BEDROOM

56

### Building Area

309 m<sup>2</sup>

### Net Land Area

429 m<sup>2</sup>

### Semi-Gross Land Area

505 m<sup>2</sup>

### Swimming Pool Area

29 m<sup>2</sup>

### Parking Area

42 m<sup>2</sup>

### Bedroom

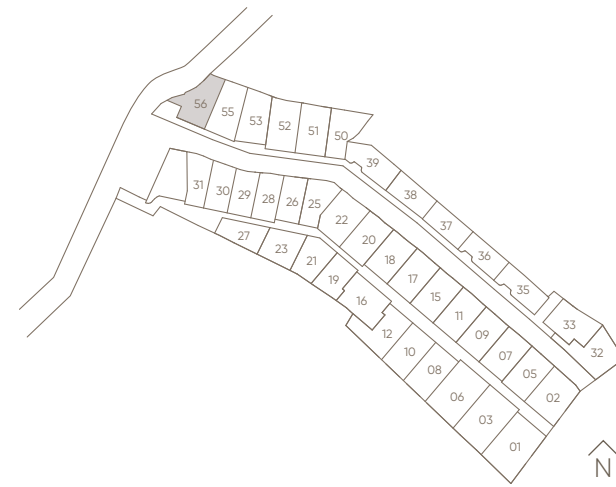
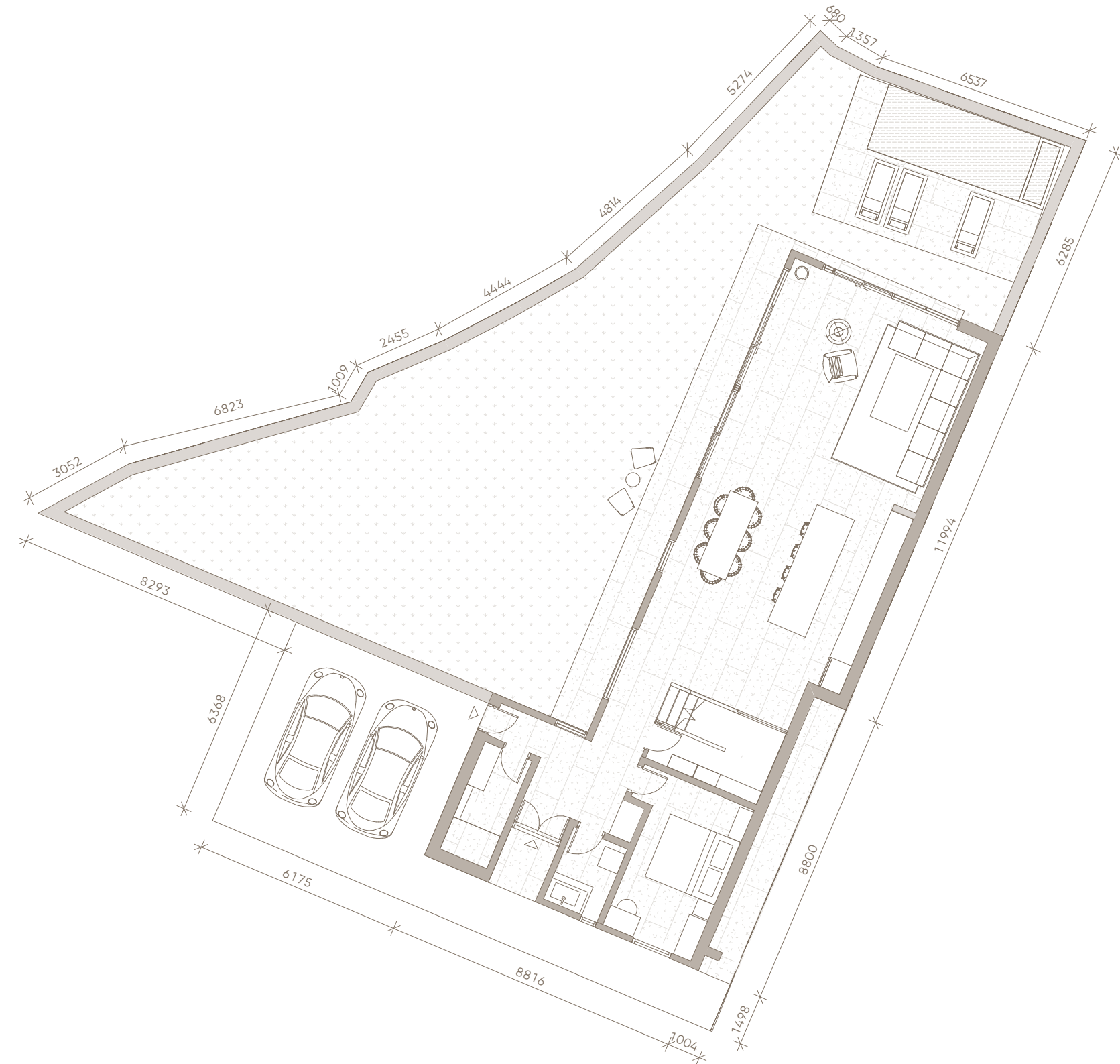
4

### Bathroom

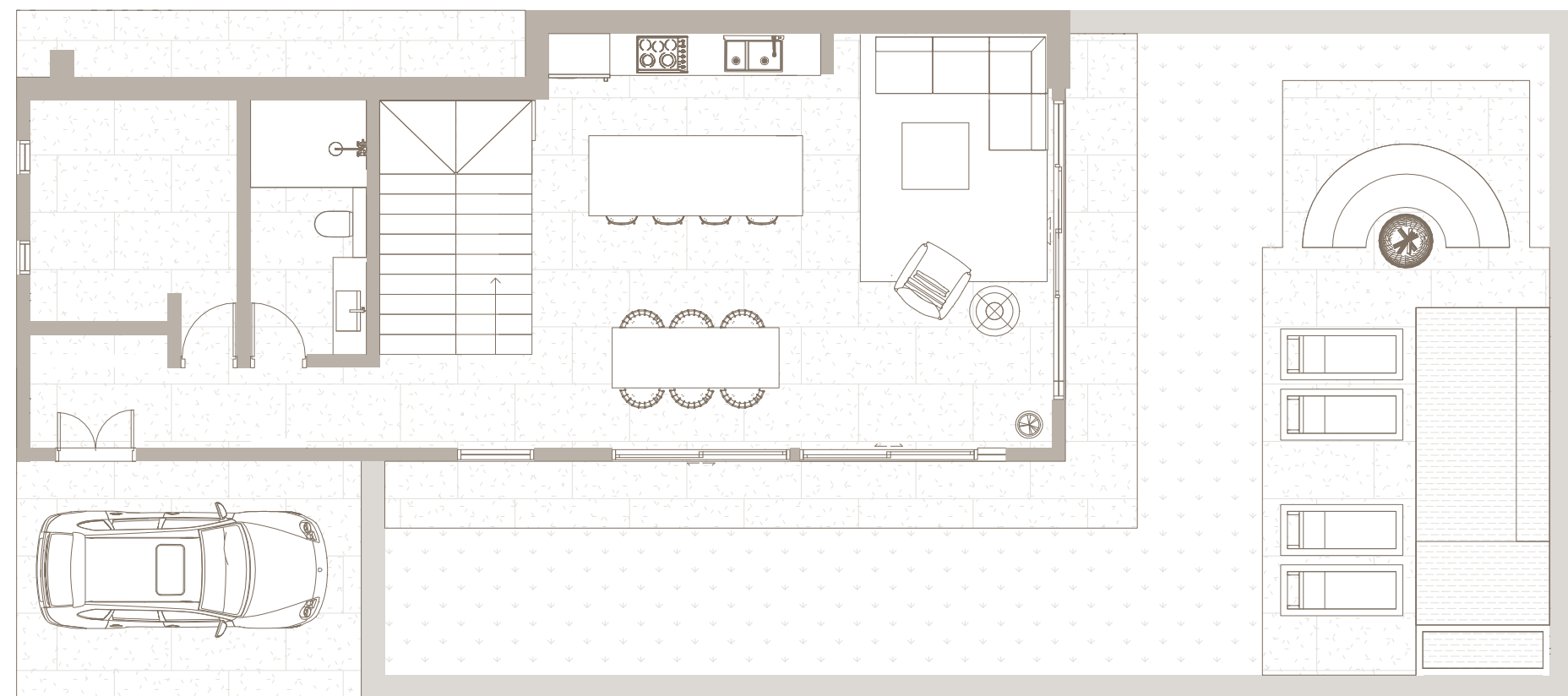
4

### View

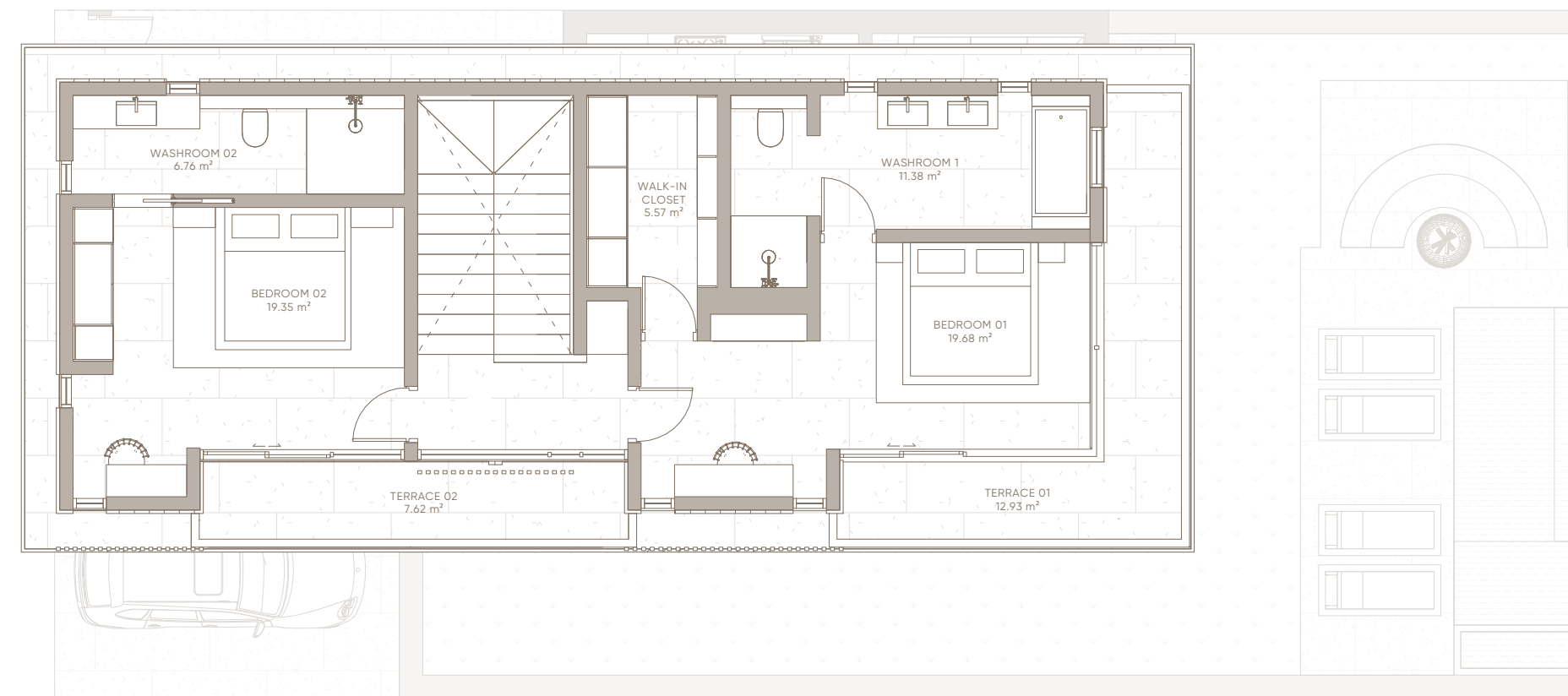
Garden



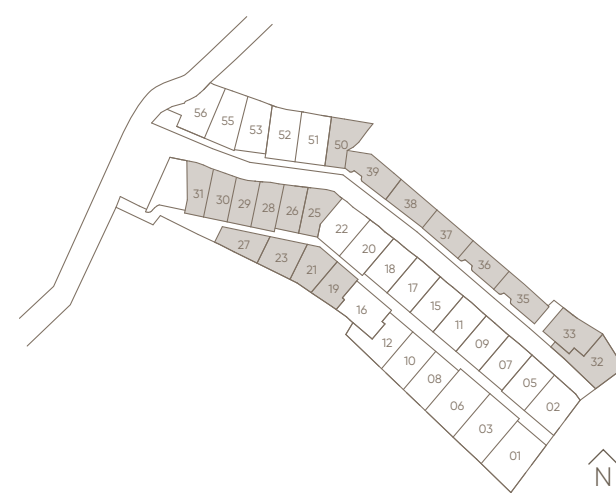
**3 BEDROOM**  
TYPICAL



Ground Floor



Second Floor



### 3 BEDROOM

27

**Building Area**

230 m<sup>2</sup>

**Net Land Area**

312 m<sup>2</sup>

**Semi-Gross Land Area**

388 m<sup>2</sup>

**Swimming Pool Area**

11 m<sup>2</sup>

**Parking Area**

50 m<sup>2</sup>

**Bedroom**

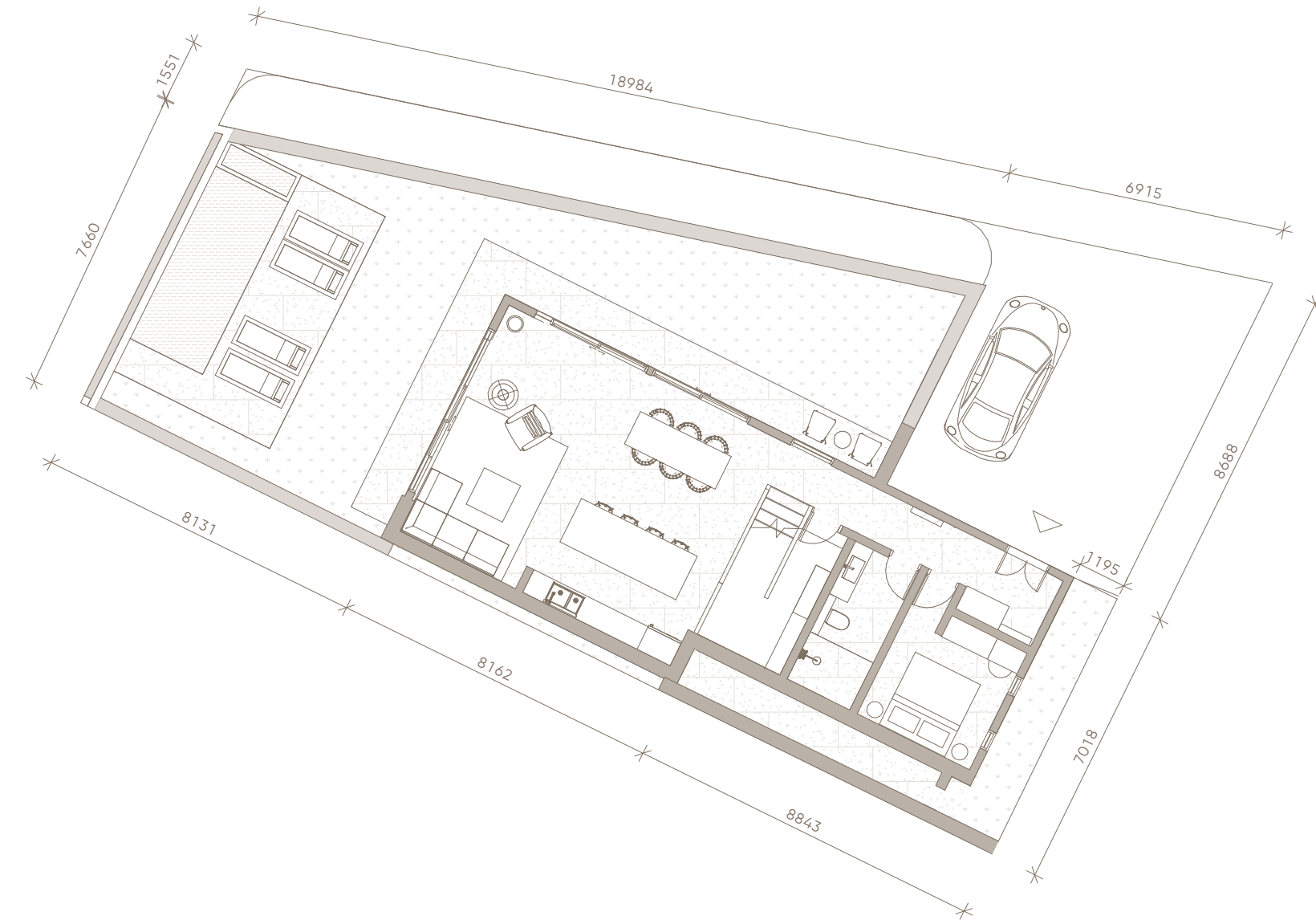
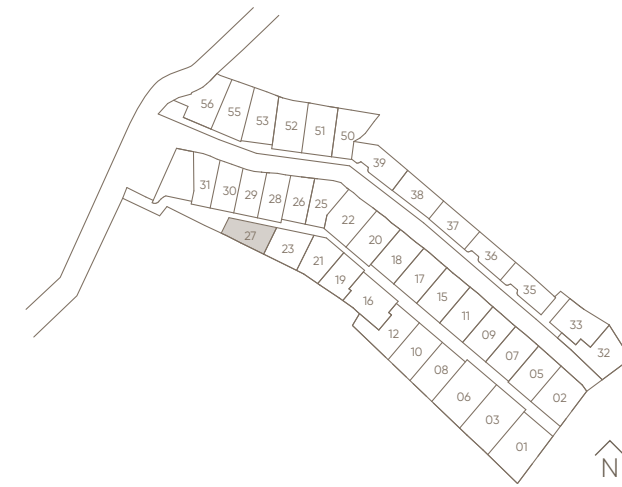
3

**Bathroom**

3

**View**

Community



### 3 BEDROOM

32

**Building Area**

230 m<sup>2</sup>

**Net Land Area**

474 m<sup>2</sup>

**Semi-Gross Land Area**

550 m<sup>2</sup>

**Swimming Pool Area**

11 m<sup>2</sup>

**Parking Area**

104 m<sup>2</sup>

**Bedroom**

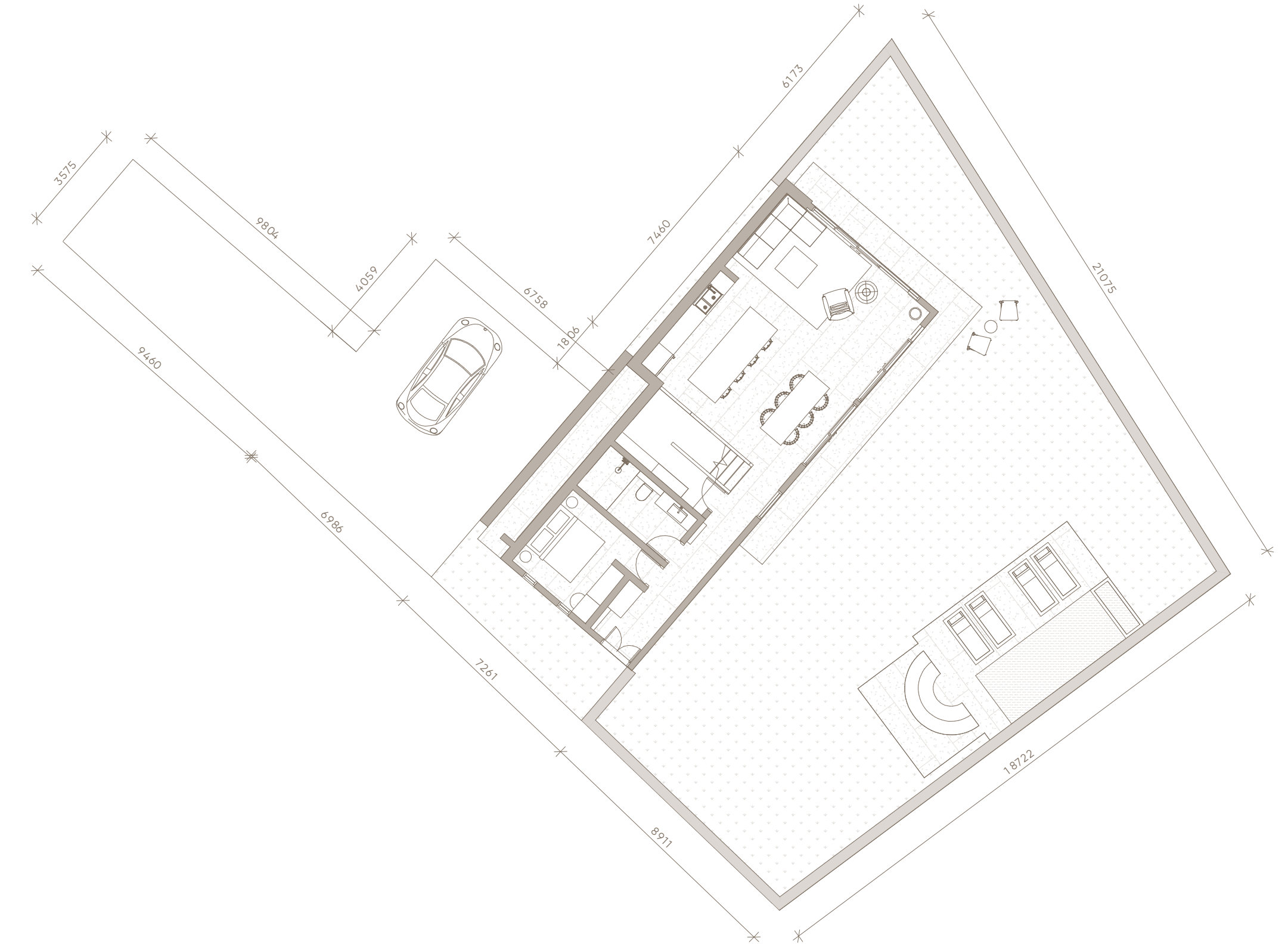
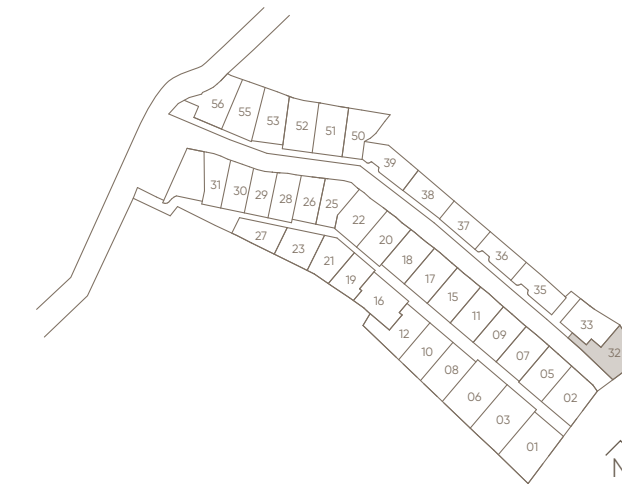
3

**Bathroom**

3

**View**

River



### 3 BEDROOM

33

**Building Area**

230 m<sup>2</sup>

**Net Land Area**

419 m<sup>2</sup>

**Semi-Gross Land Area**

495 m<sup>2</sup>

**Swimming Pool Area**

11 m<sup>2</sup>

**Parking Area**

53 m<sup>2</sup>

**Bedroom**

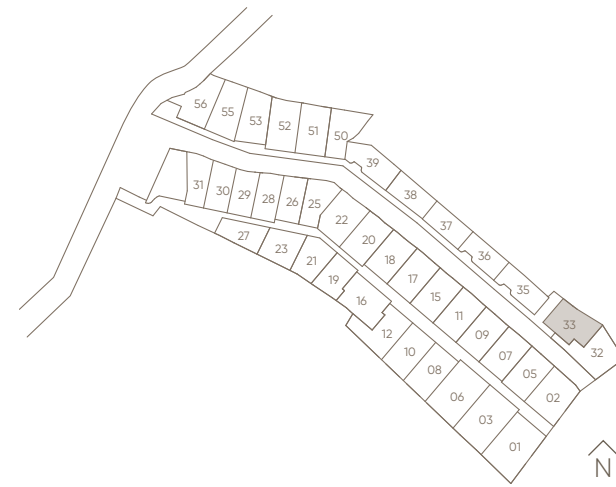
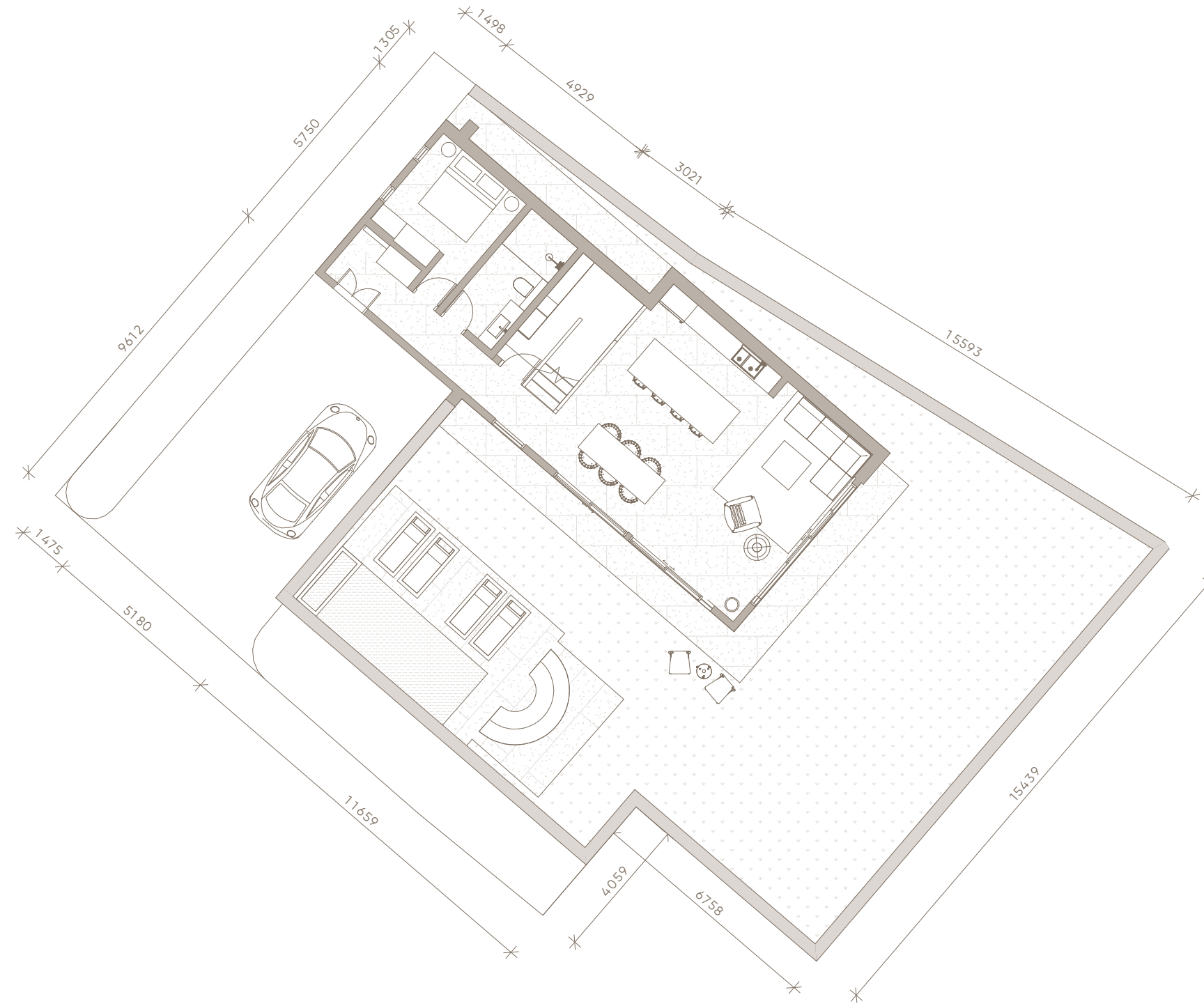
3

**Bathroom**

3

**View**

Community



### 3 BEDROOM

35

**Building Area**

230 m<sup>2</sup>

**Net Land Area**

338 m<sup>2</sup>

**Semi-Gross Land Area**

414 m<sup>2</sup>

**Swimming Pool Area**

11 m<sup>2</sup>

**Parking Area**

25 m<sup>2</sup>

**Bedroom**

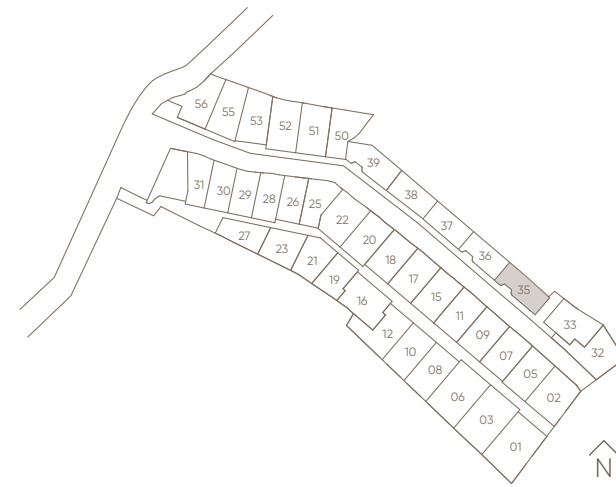
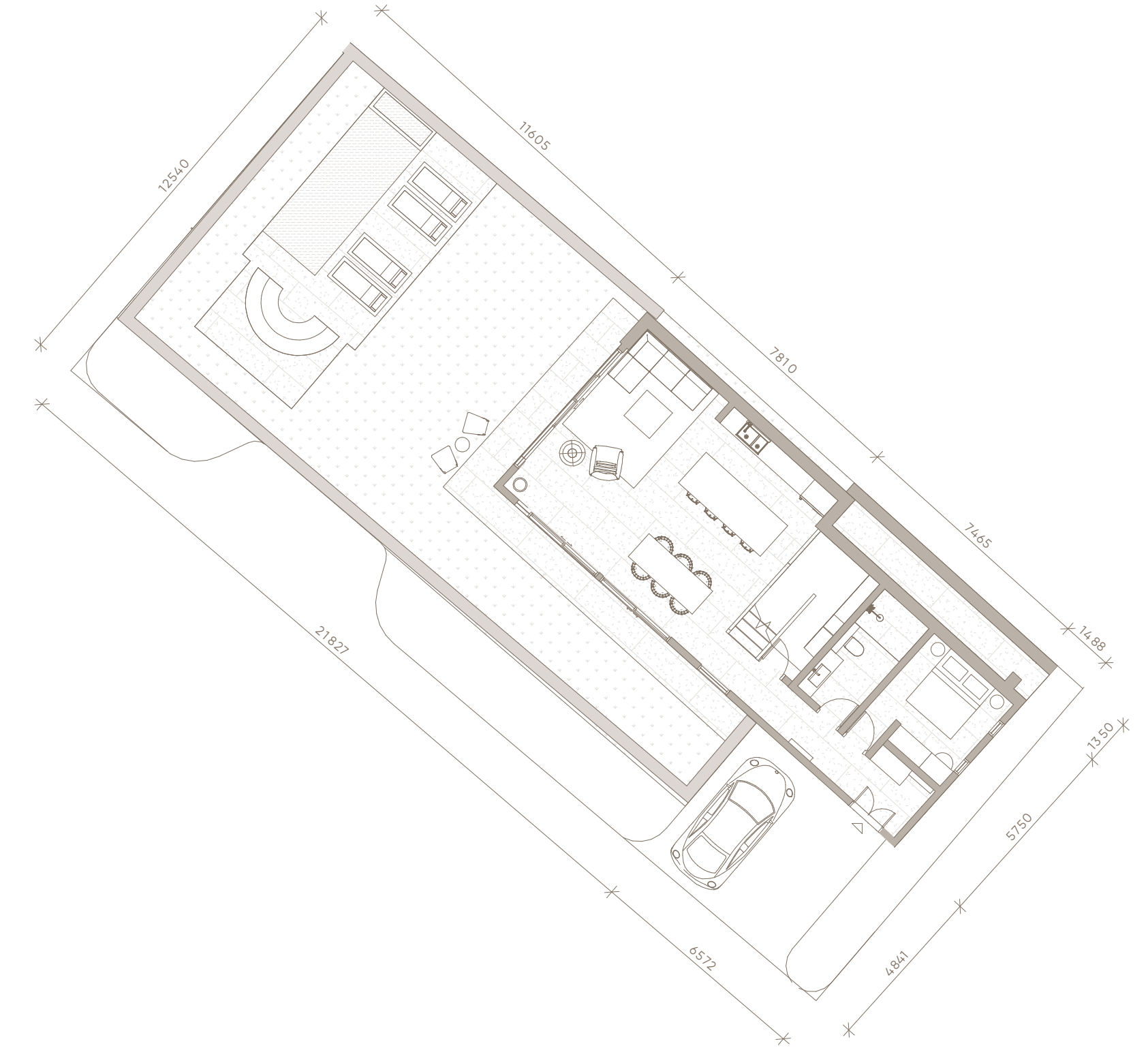
3

**Bathroom**

3

**View**

Community



### 3 BEDROOM

50

#### Building Area

230 m<sup>2</sup>

#### Net Land Area

388 m<sup>2</sup>

#### Semi-Gross Land Area

464 m<sup>2</sup>

#### Swimming Pool Area

11 m<sup>2</sup>

#### Parking Area

26 m<sup>2</sup>

#### Bedroom

3

#### Bathroom

3

#### View

Garden

