



# REGENT YACHT

BY PALLADIUM

Dubai Internet City



# PALLADIUM

DEVELOPMENT

# PROJECT *vision*

Palladium introduces a new hospitality experience shaped by the rhythm of the sea — where space opens, light moves, and clarity feels tangible. The architecture expresses gentle horizons and fluid forms, creating an environment that supports thinking, presence, and meaningful connection.

This is a place designed for people to feel clear, composed, and aware — even within the momentum of the city.



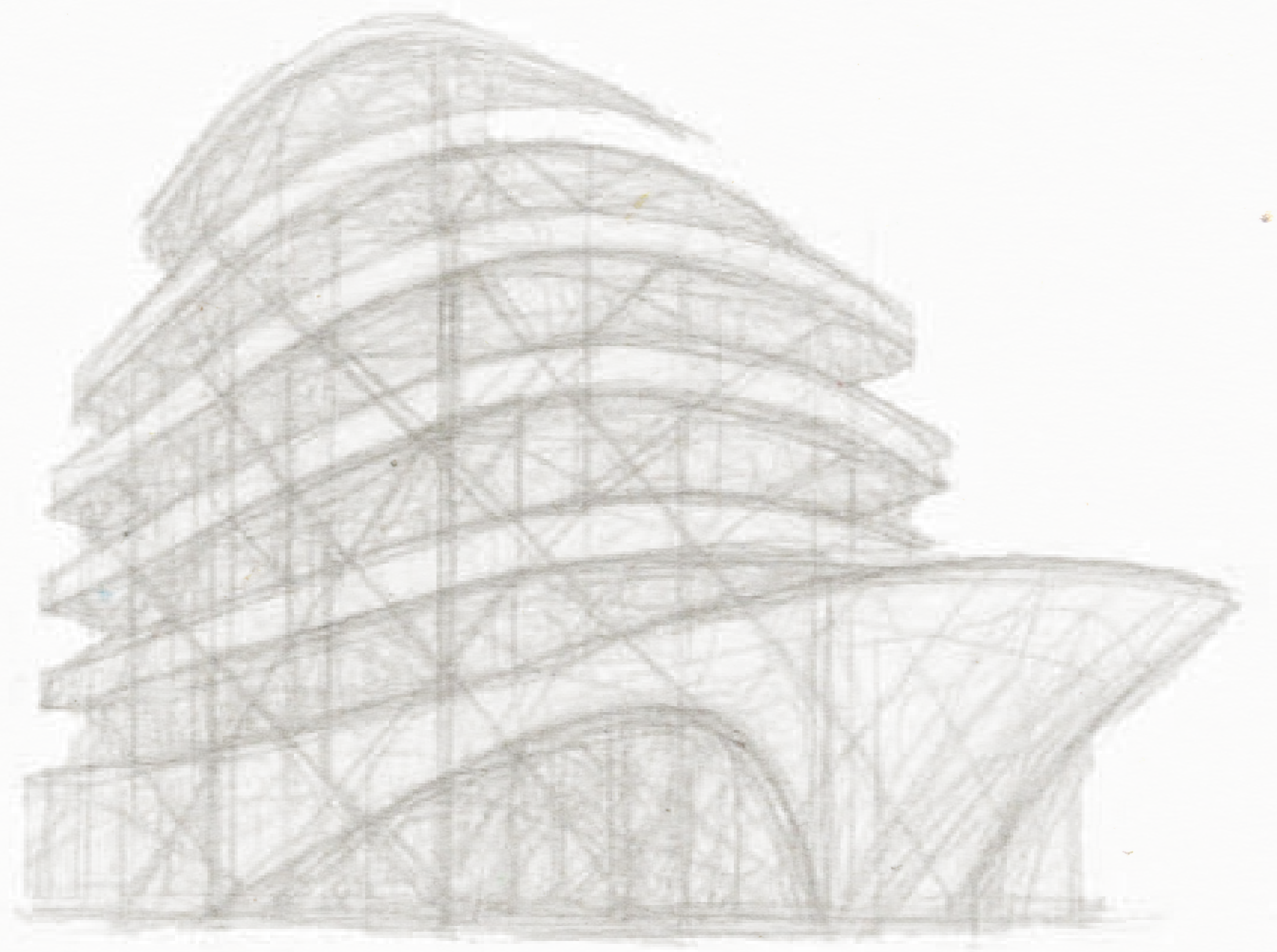
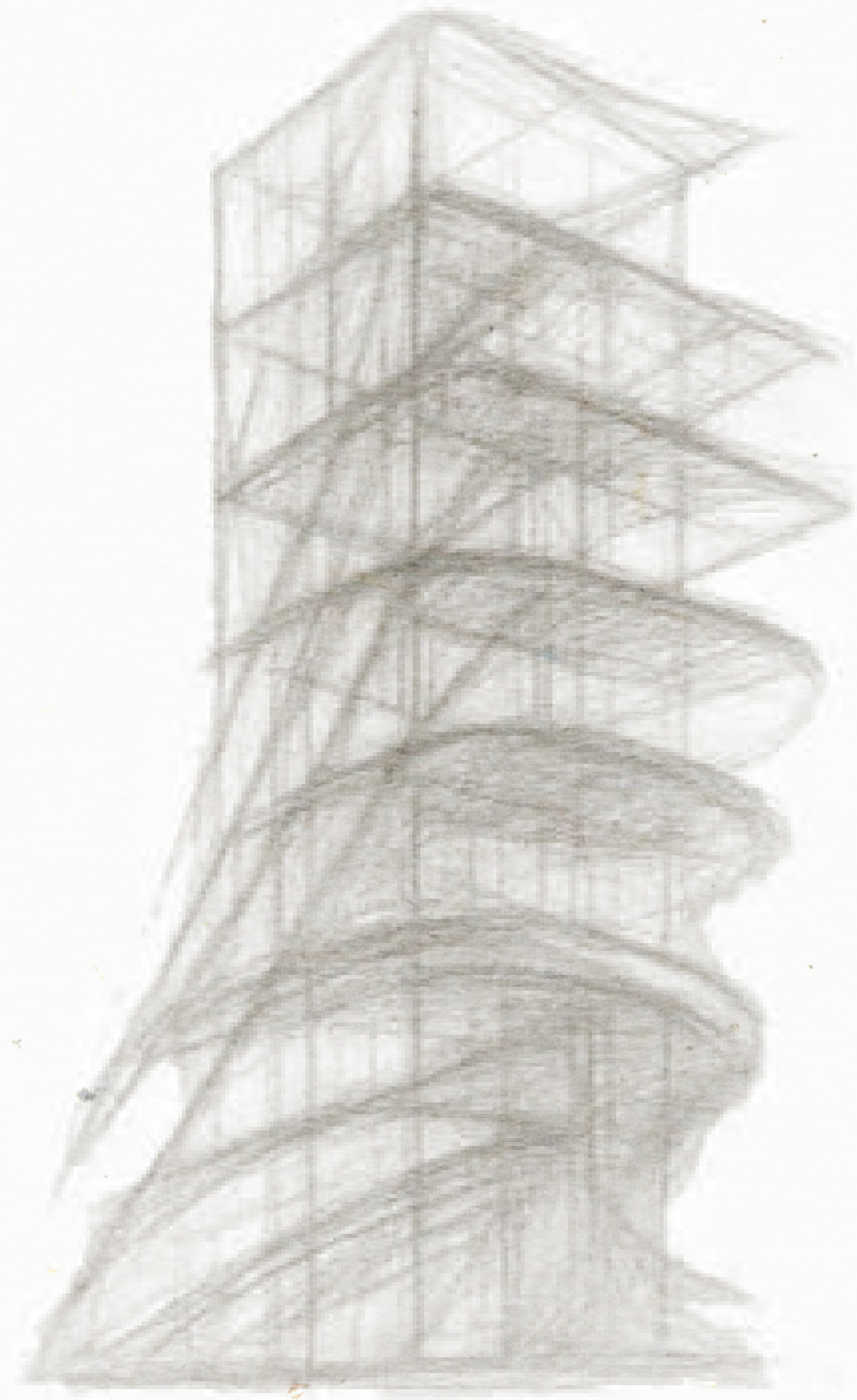
# *A 4-Star Plus* LUXURY HOTEL

Crafted to surpass traditional five-star expectations, the hotel is positioned adjacent to Dubai Innovation Hub and surrounded by Fortune 500 headquarters and global technology companies.

Where urban refinement meets the calm ease of a private yacht retreat — featuring approximately 200 elegantly appointed rooms, soft textures, clean lines, and a quiet sense of exclusivity.



# STAND *out* ARCHITECTURAL *design*



*this is the*

**NATURAL** *destination*

for executives, innovators, and international travelers seeking effortless luxury in the center of the region's most influential business ecosystem.

EFFORTLESS.

MODERN.

BEAUTIFULLY PRECISE.



*Being the* **CENTRAL HUB**  
*of global* **TECH HQS**

attracts high-income professionals as well as  
frequent business travelers from other regions.

# *Media City*

serves as the Middle East hub for many of the world's leading media and technology companies

Within walking distance of the Middle East HQs of Google, Amazon, and Microsoft and more



*Multiple*  
**UNIVERSITY  
CAMPUSES**

with international students on campus daily.  
They look for nearby accommodation for  
themselves and for when their family visits.



*5 mins from* PALM JUMEIRAH  
*and* DUBAI MARINA



Extremely well connected

*with* **DUBAI TRAM**

The Palm Monorail and Dubai  
Metro are both close by

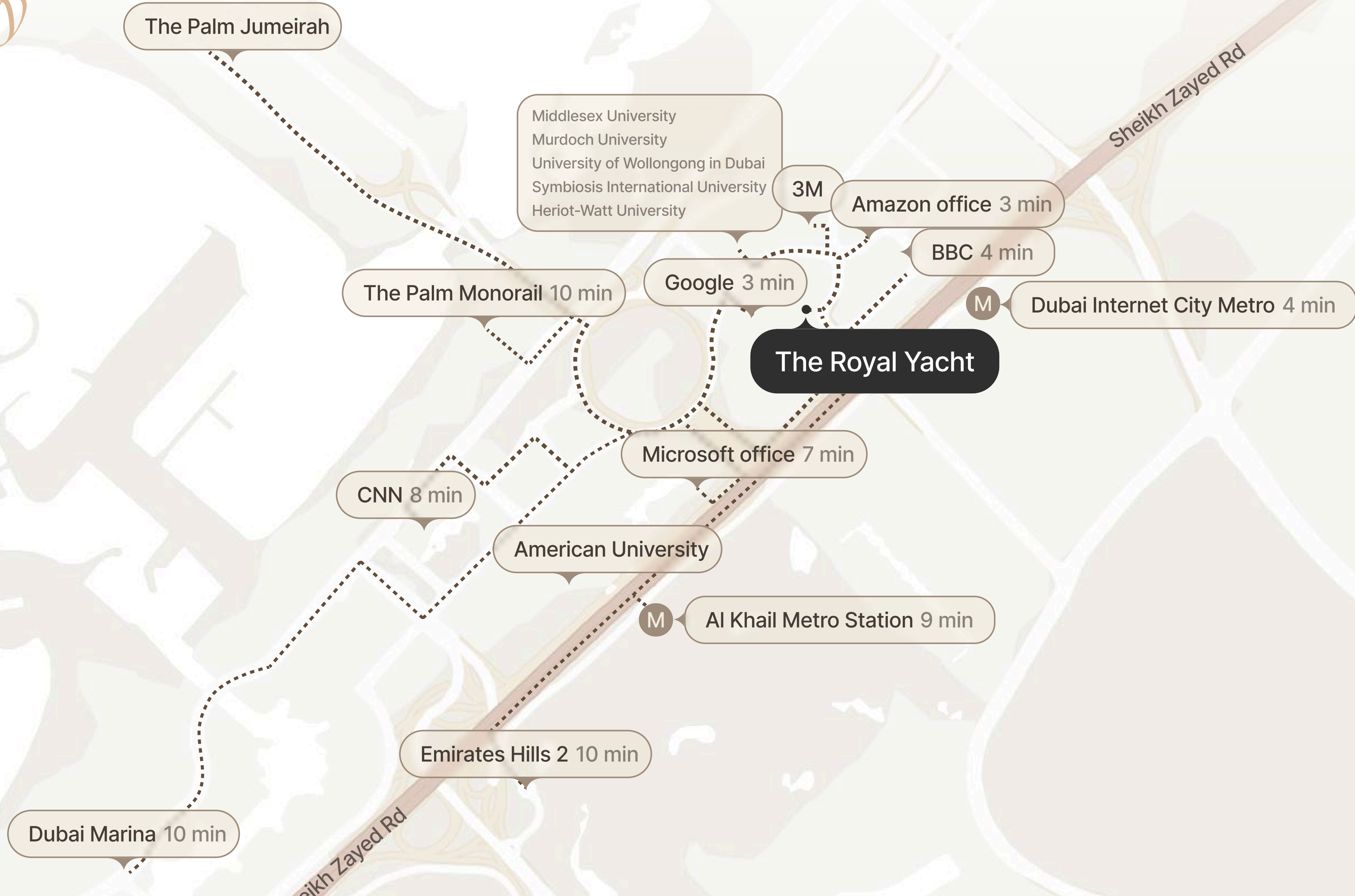
Direct access

*to* SHEIKH ZAYED  
ROAD

the main arterial highway of the city

# LOCATION

## *Media City*





### SPORT

Proximity to the Emirates Golf Club and modern fitness centers



### BUSINESS HUBS

Direct access is ensured to the key free zones of Dubai Internet City, Media City, and Knowledge Park.



### HEALTH

Modern specialized clinics, pharmacies, and wellness centers are located in the immediate vicinity



### RESTAURANTS

A variety of dining options, from international fine dining restaurants to cozy cafés, is within walking distance.



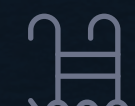
### TRANSPORT

Dubai Internet City Metro Station within walking distance



### MALLS

Mall of the Emirates and Dubai Marina Mall within a 5–10 minute drive



### LEISURE / BEACH

Proximity to Jumeirah Beach and the Dubai Marina area



### EDUCATION

American University and Knowledge Park





CRAFTED FOR *those*  
WHO LIVE LIFE *at full sail*



FLOOR PLANS  
*and* MOODS

# EVERY FLOOR, *a new deck of* REFINED LUXURY

Crafted with the sleek elegance of a modern yacht, the hotel's architecture flows with smooth curves and refined symmetry. Inside, every floor reveals lavishly designed spaces—marble finishes, warm woods, sculpted lighting, and expansive glazing that frames Dubai Internet City.

Layout is engineered for effortless movement and privacy, offering guests a seamless blend of luxury, comfort, and contemporary sophistication worthy of a true five-star destination.





INTERIOR  
*public* SPACES



LEISURE  
*/ pool*





*Room*  
**INTERIORS**



19 / MOODS



*Inside* THE HOTEL  
UNFOLDS

Inside, the hotel unfolds like the interior of a modern superyacht - sleek lines, polished finishes, and a sense of fluid motion in every space. Lavish materials, sculpted lighting, and panoramic glazing create an atmosphere of effortless luxury, while curated furnishings echo the elegance of life at sea.

*Each* LEVEL *is*

designed as its own 'deck,' offering guests a seamless blend of comfort, sophistication, and the maritime-inspired serenity that defines this retreat.

