



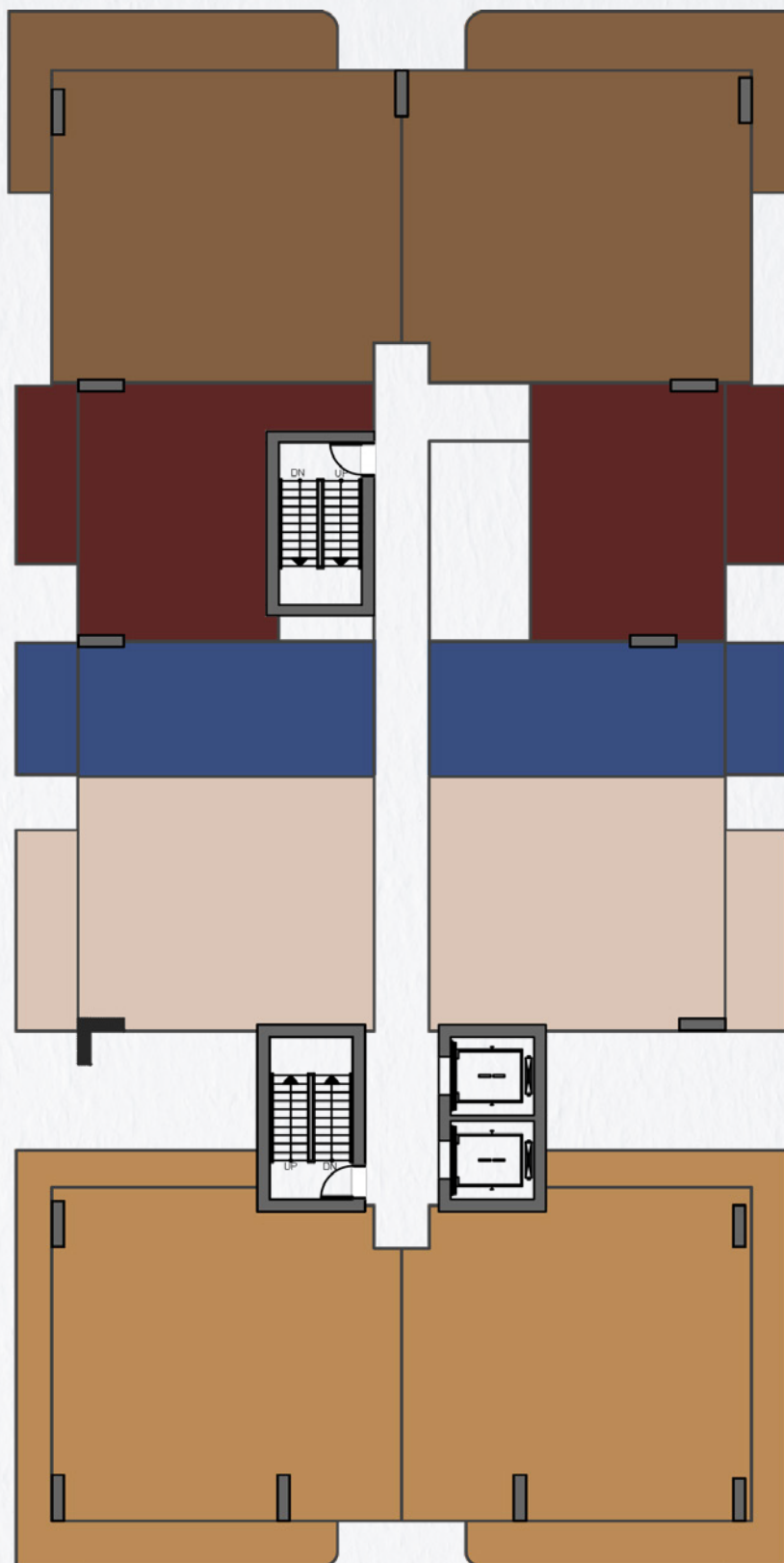
241 WATERSIDE

— DUBAI ISLANDS —

FLOOR PLANS

regent
DEVELOPMENTS

LEGACY
DEVELOPMENTS



- 1 BEDROOM SIGNATURE SKY LOFT
- 1 BEDROOM SKY LOFT
- 2 BEDROOM SIGNATURE
- 2 BEDROOM
- 3 BEDROOM

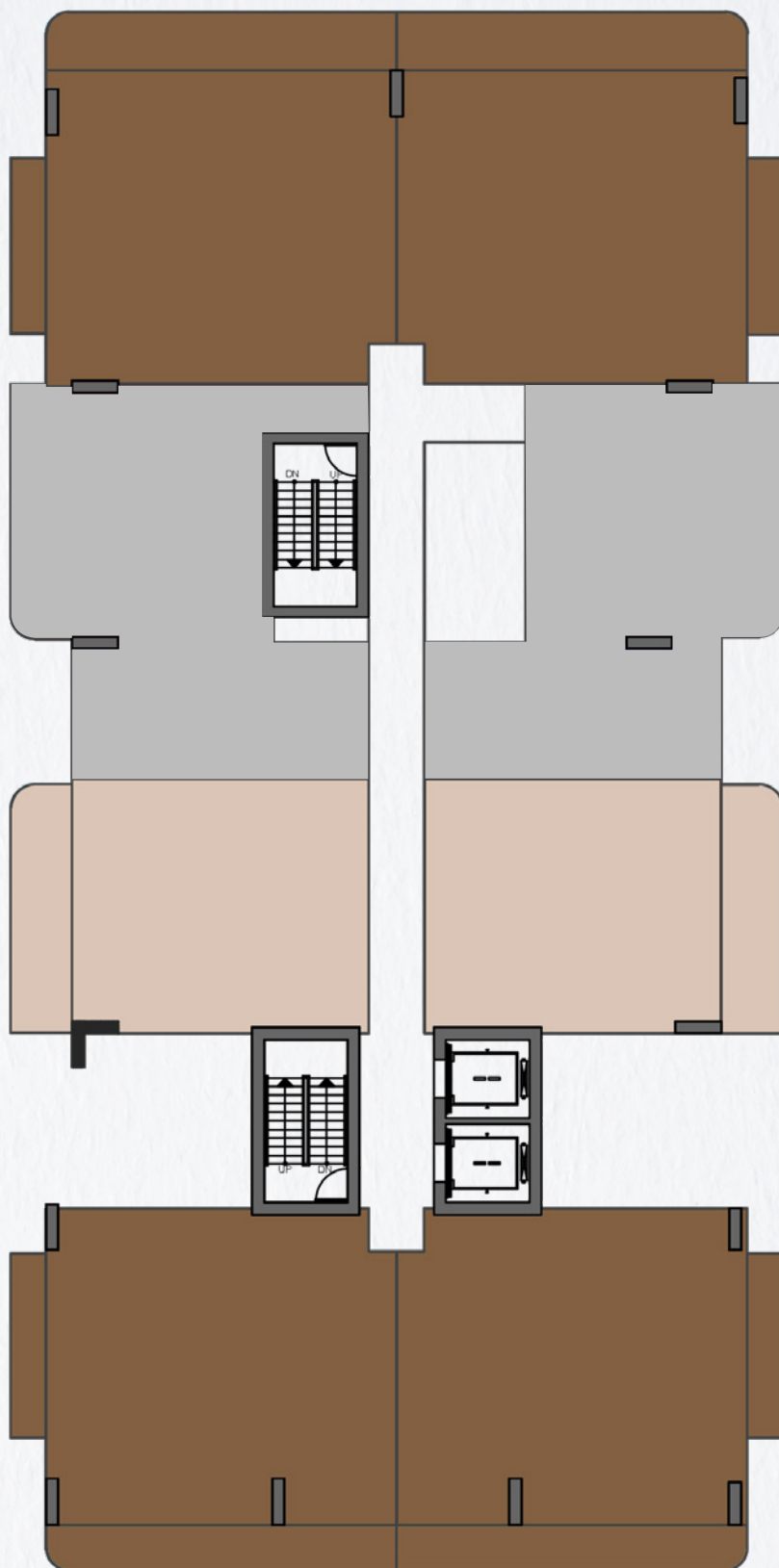
TYPICAL FLOOR PLAN - FL 1, 3, 5, 7



241 WATERSIDE

— DUBAI ISLANDS —

Disclaimer: All images and visuals are for illustration and marketing purposes only. Information is subject to change without notice or liability. Only the final Sales and Purchase Agreement between the Developer and Buyer holds legal effect. All drawings and dimensions are approximate, not to scale, and may change. The Developer reserves the right to make revisions. Unit sizes, balconies, and columns may vary based on floor level, orientation, and regulatory compliance. E&OE.



● 1 BEDROOM SIGNATURE SKY LOFT

● 1 BEDROOM SKY LOFT

● 2 BEDROOM SIGNATURE

● 2 BEDROOM

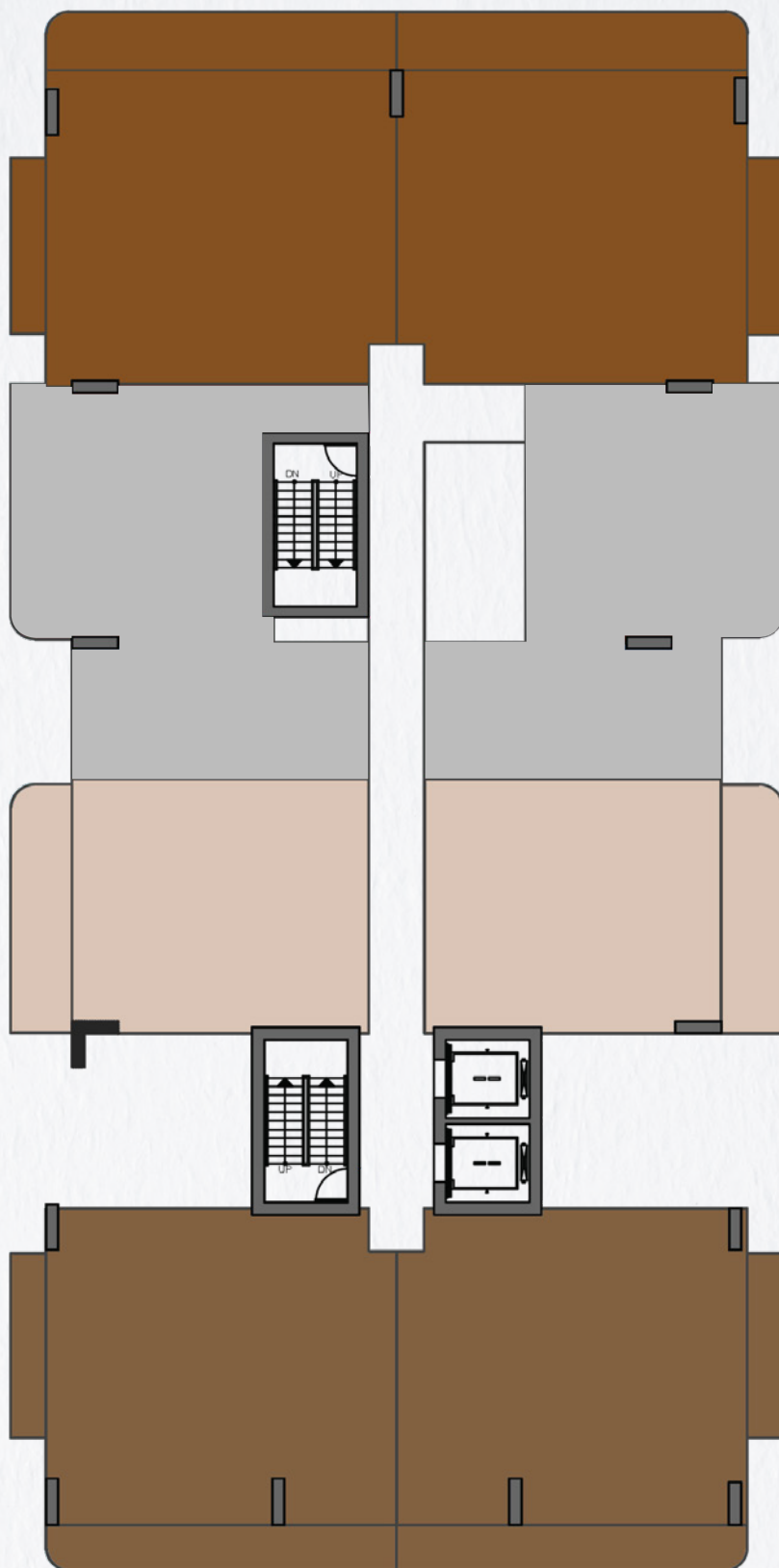
TYPICAL FLOOR PLAN - FL 2, 4, 6

Disclaimer: All images and visuals are for illustration and marketing purposes only. Information is subject to change without notice or liability. Only the Final Sales and Purchase Agreement between the Developer and Buyer holds legal effect. All drawings and dimensions are approximate, not to scale, and may change. The Developer reserves the right to make revisions. Unit sizes, balconies, and columns may vary based on floor level, orientation, and regulatory compliance. E&OE.



241 WATERSIDE

— DUBAI ISLANDS —



- 1 BEDROOM SIGNATURE SKY LOFT
- 1 BEDROOM SKY LOFT
- 2 BEDROOM SIGNATURE
- 2 BEDROOM
- 4 BEDROOM PENTHOUSE

TYPICAL FLOOR PLAN - FL 8



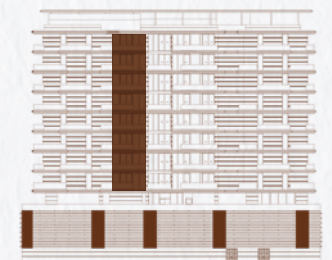
241 WATERSIDE

— DUBAI ISLANDS —

Disclaimer: All images and visuals are for illustration and marketing purposes only. Information is subject to change without notice or liability. Only the Final Sales and Purchase Agreement between the Developer and Buyer holds legal effect. All drawings and dimensions are approximate, not to scale, and may change. The Developer reserves the right to make revisions. Unit sizes, balconies, and columns may vary based on floor level, orientation, and regulatory compliance. E&OE.



△
BEACH SIDE



UNITS	108, 308, 508, 708
SUITE AREA	1121 SQ.FT
BALCONY AREA	301.82 SQ.FT
TOTAL AREA	1422.82 SQ.FT

SIGNATURE SKY LOFT - TYPE A (WEST)



241 WATERSIDE

— DUBAI ISLANDS —

Disclaimer: All images and visuals are for illustration/marketing purposes only. Information is subject to change without notice or liability. Only the final Sales and Purchase Agreement between the Developer and Buyer holds legal effect. All drawings and dimensions are approximate, not to scale, and may change. The Developer reserves the right to make revisions. Unit sizes, balconies, and columns may vary based on floor level, orientation, and regulatory compliance. E&OE.

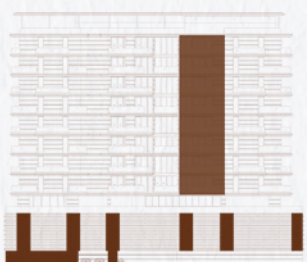
GROUND FLOOR



FIRST FLOOR



△
BEACH SIDE



UNITS	105, 305, 505, 705
SUITE AREA	983.08 SQ.FT
BALCONY AREA	300.10 SQ.FT
TOTAL AREA	1283.18 SQ.FT

SIGNATURE SKY LOFT - TYPE B (EAST)



241 WATERSIDE

— DUBAI ISLANDS —

Disclaimer: All images and visuals are for illustration and marketing purposes only. Information is subject to change without notice or liability. Only the final Sales and Purchase Agreement between the Developer and Buyer holds legal effect. All drawings and dimensions are approximate, not to scale, and may change. The Developer reserves the right to make revisions. Unit sizes, balconies, and columns may vary based on floor level, orientation, and regulatory compliance. E&OE.



GROUND FLOOR



FIRST FLOOR

△
BEACH SIDE



UNITS	109, 309, 509, 709
SUITE AREA	789.32 SQ.FT
BALCONY AREA	91.28 SQ.FT
TOTAL AREA	880.60 SQ.FT

SKY LOFT - TYPE B (WEST)



241 WATERSIDE

— DUBAI ISLANDS —

Disclaimer: All images and visuals are for illustration and marketing purposes only. Information is subject to change without notice or liability. Only the final Sales and Purchase Agreement between the Developer and Buyer holds legal effect. All drawings and dimensions are approximate, not to scale, and may change. The Developer reserves the right to make revisions. Unit sizes, balconies, and columns may vary based on floor level, orientation, and regulatory compliance. E&OE.



GROUND FLOOR



FIRST FLOOR

△
BEACH SIDE



UNITS	104, 304, 504, 704
SUITE AREA	788.68 SQ.FT
BALCONY AREA	91.60 SQ.FT
TOTAL AREA	880.28 SQ.FT

SKY LOFT - TYPE B (EAST)



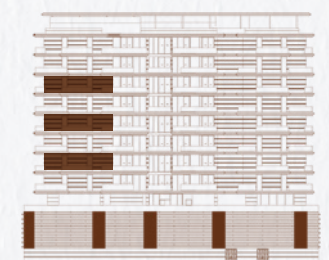
241 WATERSIDE

— DUBAI ISLANDS —

Disclaimer: All images and visuals are for illustration and marketing purposes only. Information is subject to change without notice or liability. Only the final Sales and Purchase Agreement between the Developer and Buyer holds legal effect. All drawings and dimensions are approximate, not to scale, and may change. The Developer reserves the right to make revisions. Unit sizes, balconies, and columns may vary based on floor level, orientation, and regulatory compliance. E&OE.



△
BEACH SIDE



UNITS	205, 405, 605
SUITE AREA	1204.17 SQ.FT
BALCONY AREA	303.44 SQ.FT
TOTAL AREA	1507.61 SQ.FT

2 BEDROOM - TYPE A (WEST)



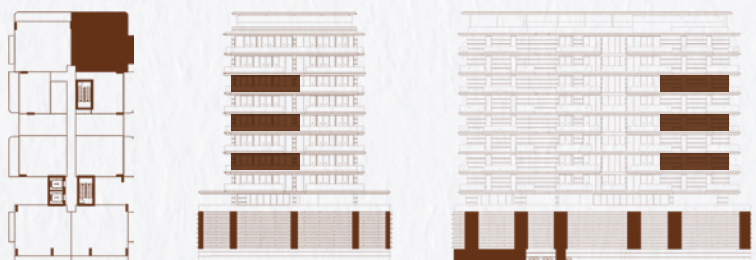
241 WATERSIDE

— DUBAI ISLANDS —

Disclaimer: All images and visuals are for illustration and marketing purposes only. Information is subject to change without notice or liability. Only the final Sales and Purchase Agreement between the Developer and Buyer holds legal effect. All drawings and dimensions are approximate, not to scale, and may change. The Developer reserves the right to make revisions. Unit sizes, balconies, and columns may vary based on floor level, orientation, and regulatory compliance. E&OE.



△
BEACH SIDE



UNITS	204, 404, 604
SUITE AREA	1203.95 SQ.FT
BALCONY AREA	304.41 SQ.FT
TOTAL AREA	1508.36 SQ.FT

2 BEDROOM - TYPE A (EAST)



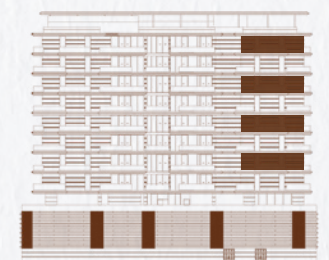
241 WATERSIDE

— DUBAI ISLANDS —

Disclaimer: All images and visuals are for illustration and marketing purposes only. Information is subject to change without notice or liability. Only the final Sales and Purchase Agreement between the Developer and Buyer holds legal effect. All drawings and dimensions are approximate, not to scale, and may change. The Developer reserves the right to make revisions. Unit sizes, balconies, and columns may vary based on floor level, orientation, and regulatory compliance. E&OE.



△
BEACH SIDE



UNITS	201, 401, 601, 801
SUITE AREA	1208.26 SQ.FT
BALCONY AREA	258.27 SQ.FT
TOTAL AREA	1467.13 SQ.FT

2 BEDROOM - TYPE A2 (WEST)



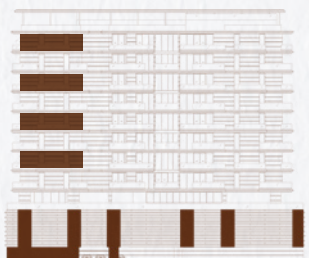
241 WATERSIDE

— DUBAI ISLANDS —

Disclaimer: All images and visuals are for illustration and marketing purposes only. Information is subject to change without notice or liability. Only the final Sales and Purchase Agreement between the Developer and Buyer holds legal effect. All drawings and dimensions are approximate, not to scale, and may change. The Developer reserves the right to make revisions. Unit sizes, balconies, and columns may vary based on floor level, orientation, and regulatory compliance. E&OE.



△
BEACH SIDE



UNITS	202, 402, 602, 802
SUITE AREA	1209.87 SQ.FT
BALCONY AREA	257.69 SQ.FT
TOTAL AREA	1467.56 SQ.FT

2 BEDROOM - TYPE A2 (EAST)



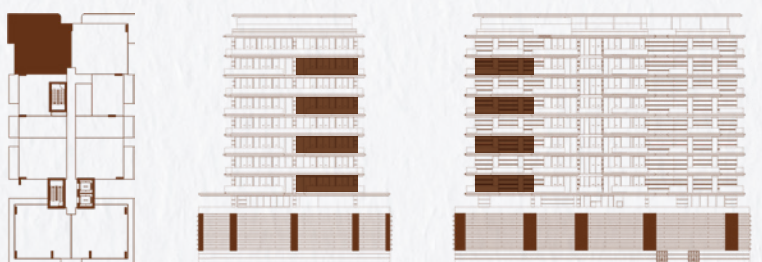
241 WATERSIDE

— DUBAI ISLANDS —

Disclaimer: All images and visuals are for illustration and marketing purposes only. Information is subject to change without notice or liability. Only the final Sales and Purchase Agreement between the Developer and Buyer holds legal effect. All drawings and dimensions are approximate, not to scale, and may change. The Developer reserves the right to make revisions. Unit sizes, balconies, and columns may vary based on floor level, orientation, and regulatory compliance. E&OE.



△
BEACH SIDE



UNITS	107, 307, 507, 707
SUITE AREA	1203.74 SQ.FT
BALCONY AREA	279 SQ.FT
TOTAL AREA	1482.74 SQ.FT

2 BEDROOM - TYPE B (WEST)



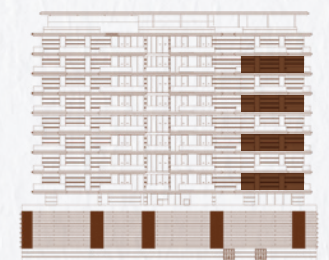
241 WATERSIDE

— DUBAI ISLANDS —

Disclaimer: All images and visuals are for illustration and marketing purposes only. Information is subject to change without notice or liability. Only the final Sales and Purchase Agreement between the Developer and Buyer holds legal effect. All drawings and dimensions are approximate, not to scale, and may change. The Developer reserves the right to make revisions. Unit sizes, balconies, and columns may vary based on floor level, orientation, and regulatory compliance. E&OE.



△
BEACH SIDE



UNITS	106, 306, 506, 706
SUITE AREA	1203.74 SQ.FT
BALCONY AREA	279 SQ.FT
TOTAL AREA	1482.74 SQ.FT

2 BEDROOM - TYPE B (EAST)



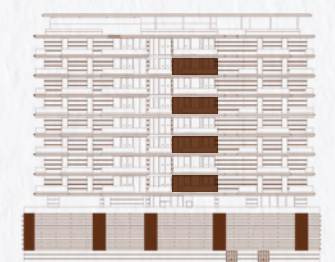
241 WATERSIDE

— DUBAI ISLANDS —

Disclaimer: All images and visuals are for illustration and marketing purposes only. Information is subject to change without notice or liability. Only the final Sales and Purchase Agreement between the Developer and Buyer holds legal effect. All drawings and dimensions are approximate, not to scale, and may change. The Developer reserves the right to make revisions. Unit sizes, balconies, and columns may vary based on floor level, orientation, and regulatory compliance. E&OE.



△
BEACH SIDE



UNITS	110, 310, 510, 710
SUITE AREA	813.97 SQ.FT
BALCONY AREA	139.72 SQ.FT
TOTAL AREA	953.69 SQ.FT

2 BEDROOM - TYPE C (WEST)



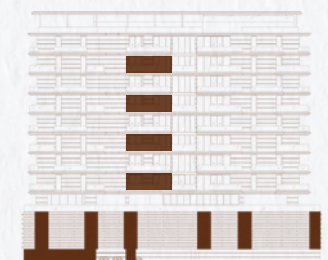
241 WATERSIDE

— DUBAI ISLANDS —

Disclaimer: All images and visuals are for illustration and marketing purposes only. Information is subject to change without notice or liability. Only the final Sales and Purchase Agreement between the Developer and Buyer holds legal effect. All drawings and dimensions are approximate, not to scale, and may change. The Developer reserves the right to make revisions. Unit sizes, balconies, and columns may vary based on floor level, orientation, and regulatory compliance. E&OE.



△
BEACH SIDE



UNITS	103, 303, 503, 703
SUITE AREA	814.08 SQ.FT
BALCONY AREA	139.50 SQ.FT
TOTAL AREA	953.58 SQ.FT

2 BEDROOM - TYPE C (EAST)



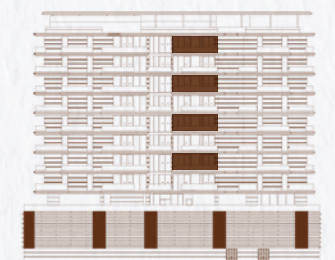
241 WATERSIDE

— DUBAI ISLANDS —

Disclaimer: All images and visuals are for illustration/marketing purposes only. Information is subject to change without notice or liability. Only the final Sales and Purchase Agreement between the Developer and Buyer holds legal effect. All drawings and dimensions are approximate, not to scale, and may change. The Developer reserves the right to make revisions. Unit sizes, balconies, and columns may vary based on floor level, orientation, and regulatory compliance. E&OE.



△
BEACH SIDE



UNITS	206, 406, 606, 805
SUITE AREA	814.08 SQ.FT
BALCONY AREA	172.55 SQ.FT
TOTAL AREA	986.63 SQ.FT

2 BEDROOM - TYPE D (WEST)



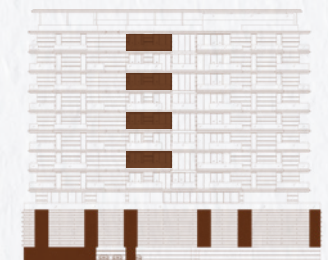
241 WATERSIDE

— DUBAI ISLANDS —

Disclaimer: All images and visuals are for illustration and marketing purposes only. Information is subject to change without notice or liability. Only the final Sales and Purchase Agreement between the Developer and Buyer holds legal effect. All drawings and dimensions are approximate, not to scale, and may change. The Developer reserves the right to make revisions. Unit sizes, balconies, and columns may vary based on floor level, orientation, and regulatory compliance. E&OE.



△
BEACH SIDE



UNITS	203, 403, 603, 803
SUITE AREA	814.08 SQ.FT
BALCONY AREA	172.01 SQ.FT
TOTAL AREA	986.09 SQ.FT

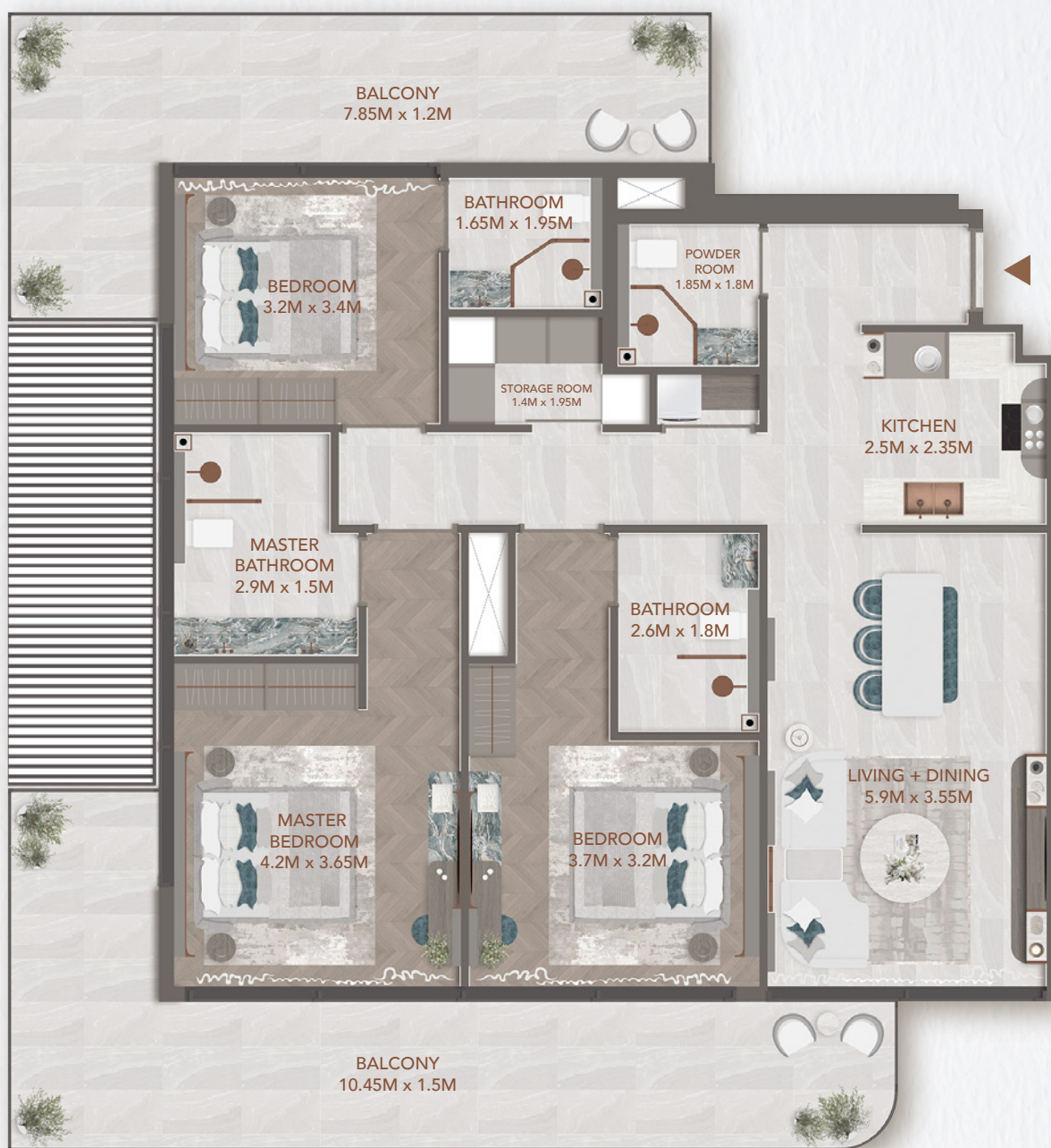
2 BEDROOM - TYPE D (EAST)



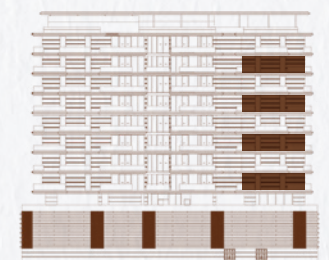
241 WATERSIDE

— DUBAI ISLANDS —

Disclaimer: All images and visuals are for illustration and marketing purposes only. Information is subject to change without notice or liability. Only the final Sales and Purchase Agreement between the Developer and Buyer holds legal effect. All drawings and dimensions are approximate, not to scale, and may change. The Developer reserves the right to make revisions. Unit sizes, balconies, and columns may vary based on floor level, orientation, and regulatory compliance. E&OE.



△
BEACH SIDE



UNITS	101, 301, 501, 701
SUITE AREA	1246.04 SQ.FT
BALCONY AREA	336.16 SQ.FT
TOTAL AREA	1582.2 SQ.FT

3 BEDROOM - (WEST)



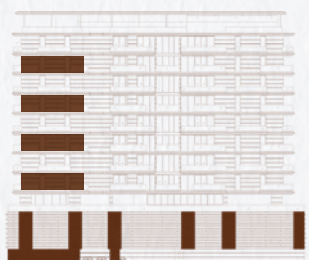
241 WATERSIDE

— DUBAI ISLANDS —

Disclaimer: All images and visuals are for illustration and marketing purposes only. Information is subject to change without notice or liability. Only the final Sales and Purchase Agreement between the Developer and Buyer holds legal effect. All drawings and dimensions are approximate, not to scale, and may change. The Developer reserves the right to make revisions. Unit size, balconies, and columns may vary based on floor level, orientation, and regulatory compliance. E&OE.



△
BEACH SIDE



UNITS	102, 302, 502, 702
SUITE AREA	1247.55 SQ.FT
BALCONY AREA	335.62 SQ.FT
TOTAL AREA	1583.17 SQ.FT

3 BEDROOM - (EAST)



241 WATERSIDE

— DUBAI ISLANDS —

Disclaimer: All images and visuals are for illustration and marketing purposes only. Information is subject to change without notice or liability. Only the final Sales and Purchase Agreement between the Developer and Buyer holds legal effect. All drawings and dimensions are approximate, not to scale, and may change. The Developer reserves the right to make revisions. Unit sizes, balconies, and columns may vary based on floor level, orientation, and regulatory compliance. E&OE.